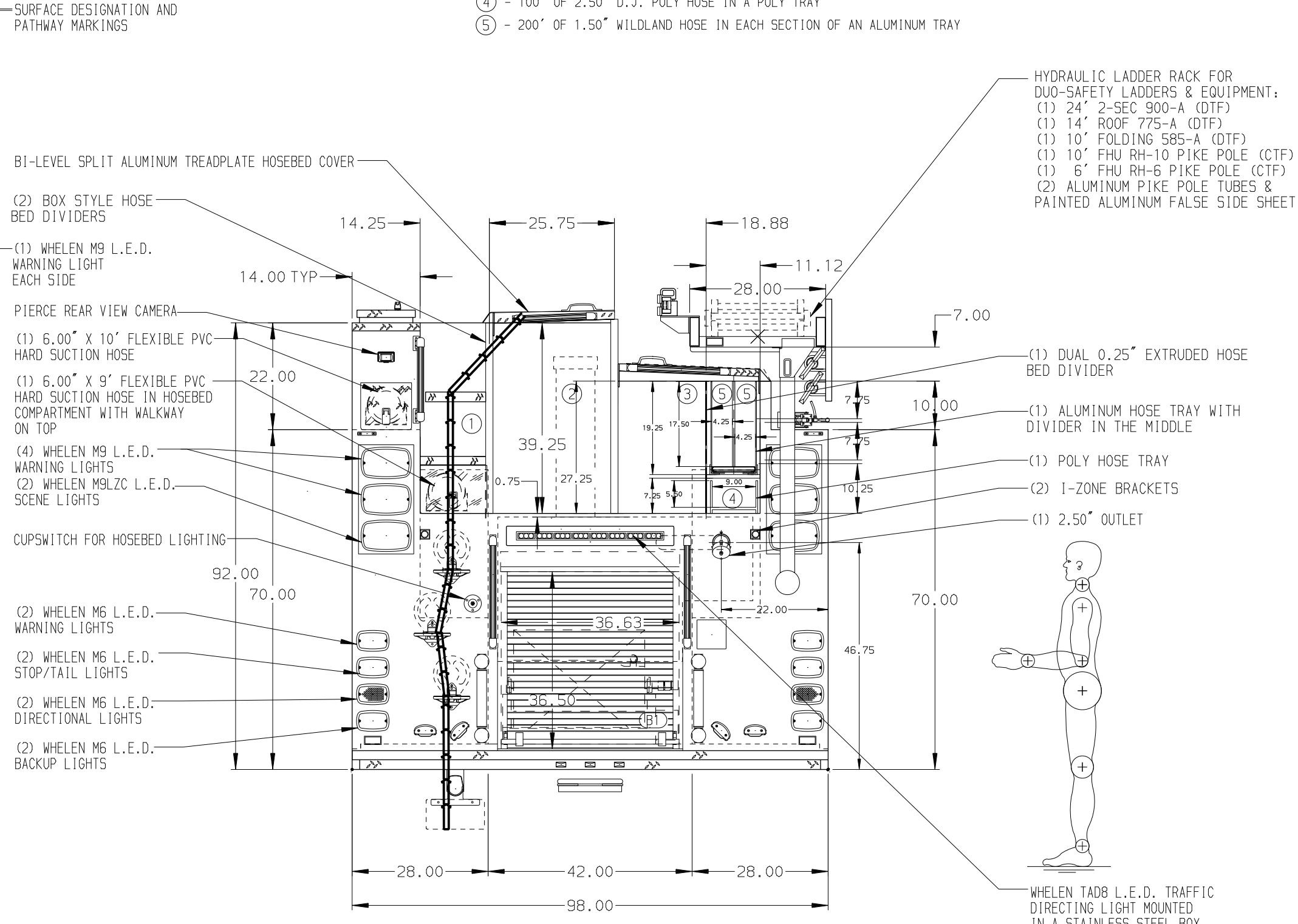
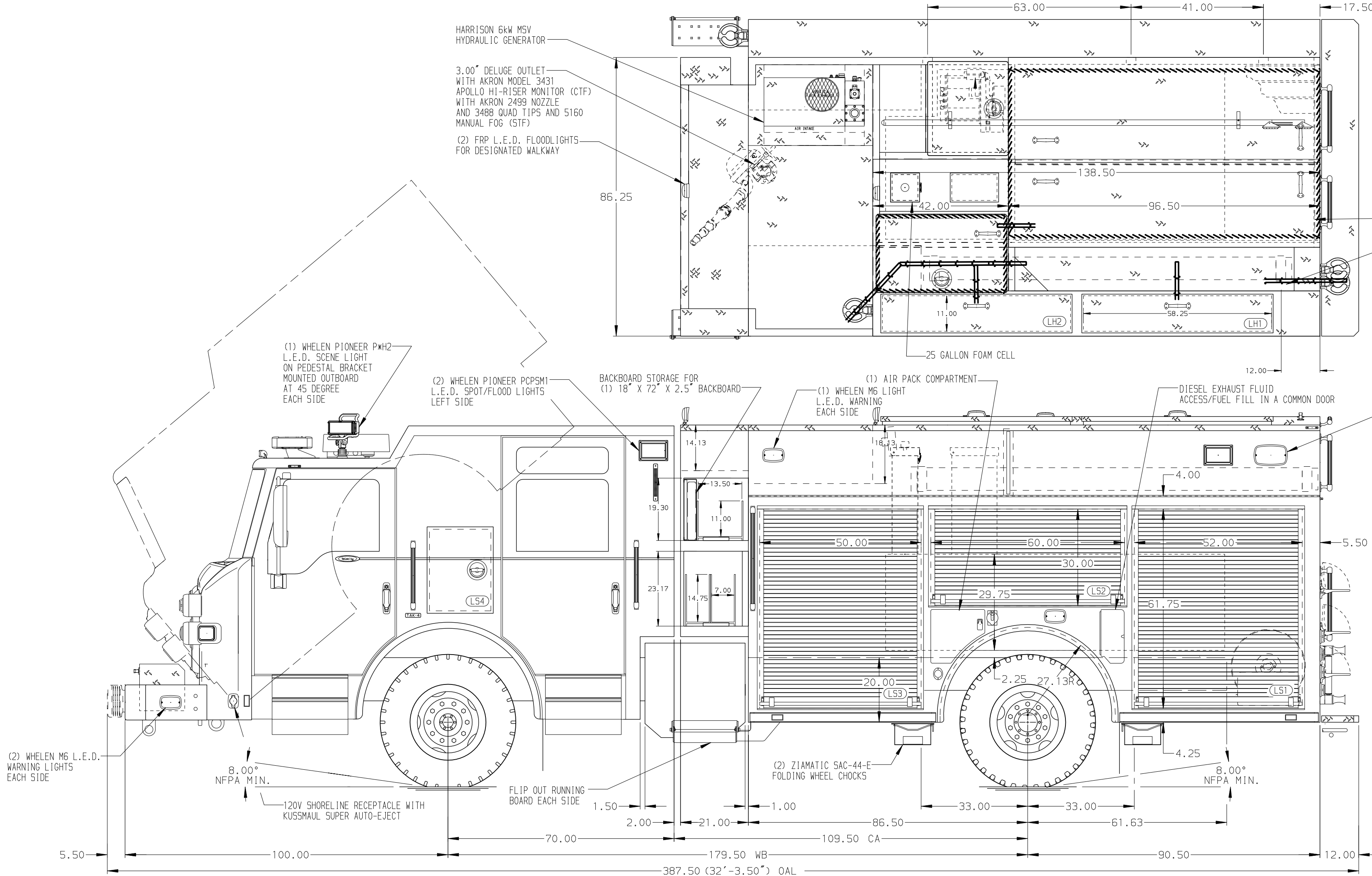


- HOSEBED CAPACITIES
- ① - EMPTY BED FOR WALKWAY
 - ② - 1000' OF 5.00" HI-VOL HOSE
 - ③ - 1000' OF 2.50" D.J. HOSE
 - ④ - 100' OF 2.50" D.J. POLY HOSE IN A POLY TRAY
 - ⑤ - 200' OF 1.50" WILDLAND HOSE IN EACH SECTION OF AN ALUMINUM TRAY



ALUMINUM BODY

SIDE ROLL AND FRONTAL IMPACT PROTECTION

NOTE

- DIMENSIONS SHOWN ARE APPROXIMATE AND ARE SUBJECT TO MINOR DEVIATIONS AS MAY OCCUR OR BE NECESSARY IN CONSTRUCTION. MINOR DETAILS NOT SHOWN.
1. ONSPOT AUTOMATIC TIRE CHAINS TO BE PROVIDED AT THE REAR
 2. AIR INLET W/ DISCONNECT COUPLING ON THE DRIVER'S SEAT RISER
 3. AIR OUTLET W/ SHUT OFF VALVE ON D.S. PUMP PANEL
 4. BATTERY CHARGER LOCATED BEHIND DRIVER SEAT
 5. BATTERY CHARGER INDICATOR LOCATED NEAR DRIVER'S SEAT RISER WITH BRACKET
 6. WHELEN 7000ELZR L.E.D. LIGHT LOCATED AT THE FRONT OF THE HOSE BED
 7. STAINLESS STEEL SQUEEZE PLATE ON BODY REAR CORNERS
 8. FULL WIDTH/DEPTH ADJUSTABLE SHELVES THREE IN L51 AND R53, TWO IN L53 AND R51, AND ONE IN L52 AND B1
 9. ONE ADJUSTABLE HEIGHT SLIDE-OUT TRAY IN R51
 10. ONE VERTICAL PARTITION IN L51
 11. ONE SPECIAL BRACKET FOR ADJUSTABLE HEIGHT TRAY IN R51
 12. ONE ADJUSTABLE TILTING SLIDE-OUT TRAY IN R53
 13. ONE ADJUSTABLE VERTICAL PARTITION IN R53
 14. ONE VERTICAL BOLT-IN PARTITION BETWEEN COMPARTMENTS L51-B1 & R51-B1
 15. ONE VERTICAL PARTITION IN L51 AND L52
 16. ONE BOLT IN PARTITION IN L51 SHIPPED LOOSE
 17. NYLON STRAPS WITH VELCRO - EACH END OF THE BACKBOARD COMPARTMENT
 18. ONE 6" FHU RH-6 NYRH PIKE POLE ON THE BACK OF THE CAB ON THE RIGHT SIDE
 19. ONE HANNAY MODEL SBEF 34-23-24 BOOSTER REEL WITH 150' OF 1.00" BOOSTLITE HOSE IN B1
 20. HUSKY 12 FOAM SYSTEM
 21. CIRCUIT BREAKER PANEL IN L53
 22. ONE HANNAY ELECTRIC REWIND CORD REEL MODEL 1618-17-18 WITH 200' OF 10/3 CABLE LOCATED IN ENCLOSURE ON THE RIGHT SIDE OF THE FRONT OF THE HOSEBED
 23. 120V NEAR DUPLEX RECEPTABLE TWO IN THE EMS CABINET ON THE RIGHT SIDE AND ONE IN THE CENTER EMS CABINET AND R53

| REV | DATE | BY | CH | VELOCITY FR |
|-----|---------|-----|-----|-------------|
| 1 | 15JUL19 | LST | JJR | MAKE |
| 2 | 17MAY19 | LST | JJR | PIERCE |
| 3 | 24APR19 | LST | SMA | MODEL |

| Pierce MANUFACTURING INC. | | JOB NO. | 33870 |
|---------------------------|--|------------|--------|
| | | SCALE | 1:24 |
| | | DATE | |
| TITLE | | DRAWN BY | LST |
| FOR | | CHECKED BY | SMA |
| DWG NO. | | SHEET SIZE | D |
| | | SHEET NO. | 1 OF 1 |



33870AD