

Pumper, PUC

BODY

Pumper, PUC, Aluminum

CHASSIS

Impel Chassis, PUC

CHASSIS

AXLE, FRONT, CUSTOM

22,800 Lb TAK-4 Axle

AXLE, REAR

27,000 Lb Meritor Axle

ENGINE

450 HP Cummins L9 Engine

TRANSMISSION

Allison 5th Gen, 3000 EVS P

BUMPER

22" Extended Painted Steel

CAB

7010 Impel FR Cab, PUC

BODY

WATER TANK

730 Gallon Poly Water Tank

COMPT, PUMPER, REAR

33.50" FF RollUp Rear Compt w/Tailboard, PUC

COMPT, PUMPER, LEFT SIDE

189" RollUp Full Height & Depth Front & Rear, PUC

COMPT, PUMPER, RIGHT SIDE

189" RollUp Full Height & Depth Front & Rear, PUC

FIRE SUPPRESSION

PUMPHOUSE

Control Zone, PUC

PUMP

1500 GPM Pierce PUC

CROSSLAYS, 1.50"

(2) 1.50", Poly Trays, 200'

CROSSLAYS, 2.50"

(1) 2.50", Poly Tray, Special Capacity

GENERATOR

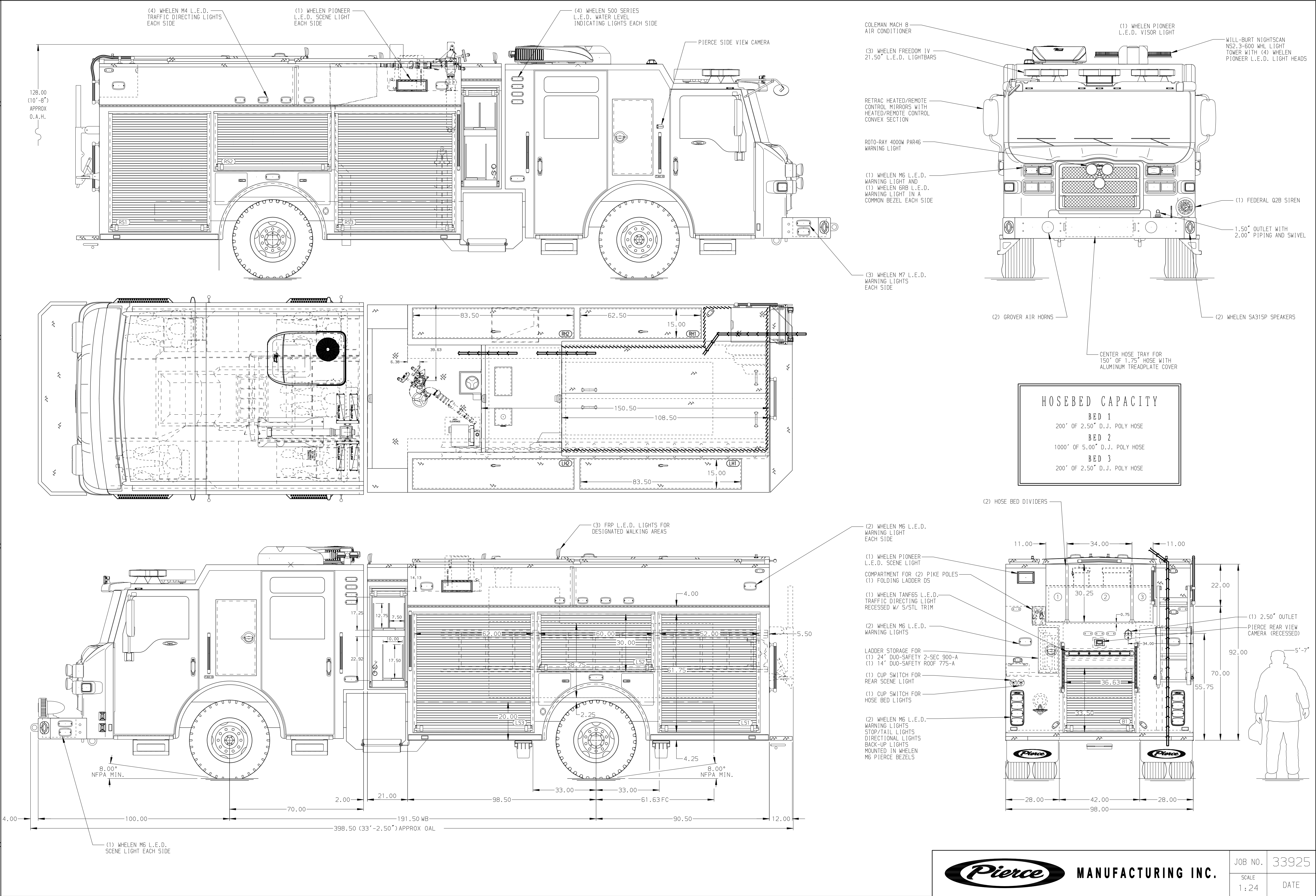
Generator Not Required

Foam System

Husky 3 Single Agent Foam System

Foam Cell

25 Gallon Foam Cell, Not Reduced Water, PUC



<div>NOTE</div> <div>DIMENSIONS SHOWN ARE APPROXIMATE AND ARE SUBJECT TO MINOR DEVIATIONS AS MAY OCCUR OR BE NECESSARY IN CONSTRUCTION. MINOR DETAILS NOT SHOWN.</div>					<div>1. ONE 1.50 OUTLET WITH 2.00 PIPING AND SWIVEL LOCATED IN CENTER BUMPER TRAY</div> <div>2. TWO SHORELINE RECEPTABLES WITH BLUE SEA SURE EJECT LOCATED ON DRIVER SIDE CAB CORNER</div> <div>3. AIR INLET/OUTLET WITH DISCONNECT COUPLING ON DRIVER SIDE PUMP PANEL</div> <div>4. BATTERY CHARGER LOCATED NEAR DRIVER SEAT RISER WITH BRACKET</div> <div>5. SEVEN ADJUSTABLE SHELVES LOCATED PER SHOP ORDER</div> <div>7. THREE 120W DUPLEX RECEPTABLES LOCATED PER SHOP ORDER</div> <div>8. ONE 500LB ADJUSTABLE SLIDE-OUT TRAY LOCATED PER SHOP ORDER</div> <div>9. ONE FLOOR MOUNTED SLIDE-OUT TRAY WITH FLAT TOP LOCATED PER SHOP ORDER</div> <div>10. ONE TILTING/SLIDE-OUT TRAY LOCATED PER SHOP ORDER</div> <div>11. ONE SWING-OUT TOOLBOARD LOCATED PER SHOP ORDER</div> <div>12. TWO SLIDE-OUT TOOLBOARDS LOCATED PER SHOP ORDER</div> <div>13. ONE VERTICAL PARTITION LOCATED PER SHOP ORDER</div> <div>14. ALUMINUM PEGBOARD LOCATED ON COMPARTMENT WALLS PER SHOP ORDER</div> <div>15. DEALER PROVIDED LITTLE GIANT LADDER MODEL 13 LOCATED PER SHOP ORDER</div> <div>16. TOOLB OIL DRY HOPPER LOCATED IN RS HATCH COMPARTMENT</div> <div>17. THREE 120W DUPLEX RECEPTABLES LOCATED PER SHOP ORDER</div> <div>18. ONE TOOLBOARD MOUNTED TO SLIDE-OUT TRAY LOCATED PER SHOP ORDER</div> <div>19. ONE 4.00" DEEP ADJUSTABLE SLIDE-OUT TRAY LOCATED PER SHOP ORDER</div>				
REV	DATE	BY	CH	IMPEL	CHASSIS DATA	TITLE	Pierce PUC Pumper Approval Drawing	JOB NO.	33925
15JUL19	COL	KBO	MAKE	PIERCE				SCALE	1:24
12JUN19	KLE	KWI	FOR		MODEL	Denton County ESD1		DRAWN BY	COL
06JUN19	COL	KBO	DWG NO.					CHECKED BY	KBO
								SHEET SIZE	D
								SHEET NO.	1 OF 1



MANUFACTURING INC.

33925AD