

- HOSEBED CAPACITIES
- ① 250' OF 2.50" DJ POLY HOSE
 - ② 1200' OF 5.00" RUBBER HOSE
 - ③ 250' OF 2.50" DJ POLY HOSE

SURFACE DESIGNATION AND PATHWAY MARKINGS

(2) 0.25" SINGLE SHEET HOSEBED DIVIDERS

(1) TROUGH FOR 10' X 6.00" HARD SUCTION HOSE (STF) MOUNTED IN HOSEBED WITH KOCHER STRAINER

(1) PIERCE BACKUP CAMERA WITH ALUMINUM 4-WAY GUARD

(2) FIRE RESEARCH SPA900-070 L.E.D. SCENE LIGHTS

STORAGE COMPARTMENT FOR (2) 5.00" X 10" HARD SUCTION HOSES (STF)

CUPSWITCH FOR REAR SCENE LIGHTS

CUPSWITCH FOR HOSEBED LIGHTING

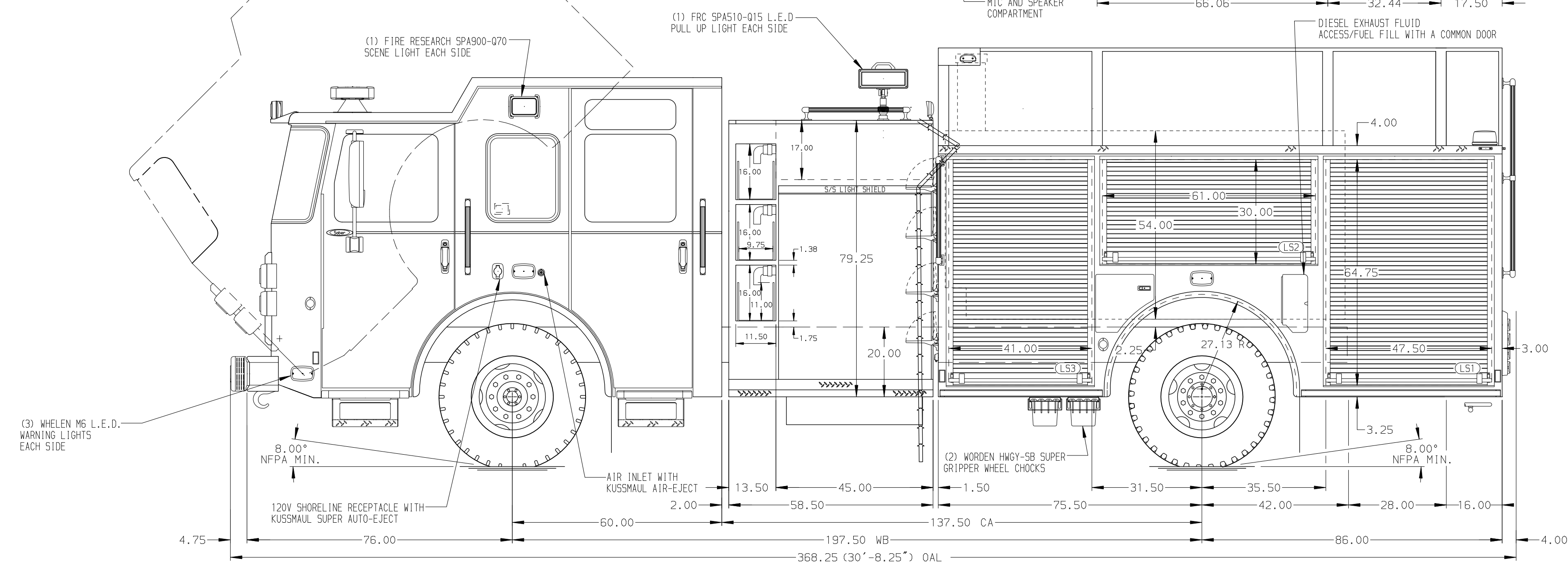
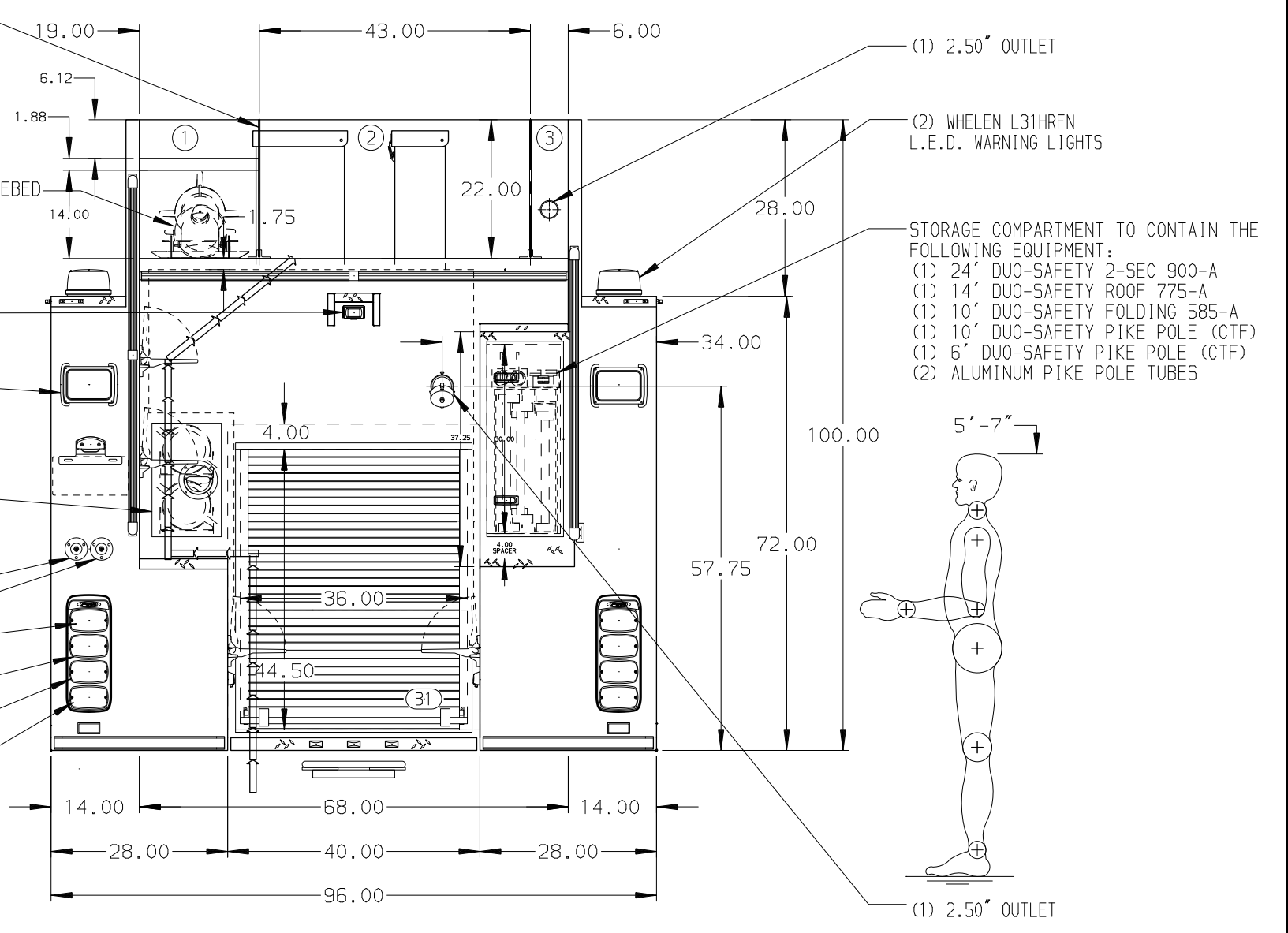
(2) WHELEN M6 L.E.D. WARNING LIGHTS

(2) WHELEN M6 L.E.D. STOP/TAIL LIGHTS

(2) WHELEN M6 L.E.D. DIRECTIONAL LIGHTS

(2) WHELEN M6 L.E.D. BACK-UP LIGHTS

LIGHTS MOUNTED IN WHELEN M6 "PIERCE" BEZELS



ALUMINUM BODY

NOTE
 DIMENSIONS SHOWN ARE APPROXIMATE AND ARE SUBJECT TO MINOR DEVIATIONS AS MAY OCCUR OR BE NECESSARY IN CONSTRUCTION. MINOR DETAILS NOT SHOWN.

		JOB NO.	34026
		SCALE	DATE
TITLE 1250-D-1025P, 1000 GAL OF WATER W/ 25 GAL FOAM CELL 161" FDLER, LDRS. BTWN. TANK & S. SHEET, (3) S. LAYS		DRAWN BY	LST 28MAY19
FOR BENTON VOLUNTEER FIRE DEPARTMENT PENN YAN, NEW YORK		CHECKED BY	KOU 29MAY19
DWG NO. 34026AD		SHEET SIZE	SHEET NO. D 1 OF 1

CHASSIS DATA	TITLE	1250-D-1025P, 1000 GAL OF WATER W/ 25 GAL FOAM CELL 161" FDLER, LDRS. BTWN. TANK & S. SHEET, (3) S. LAYS
MAKE	FOR	BENTON VOLUNTEER FIRE DEPARTMENT PENN YAN, NEW YORK
MODEL	DWG NO.	34026AD
SABER FR	REV	DATE
	BY	JLA
	CH	GSC