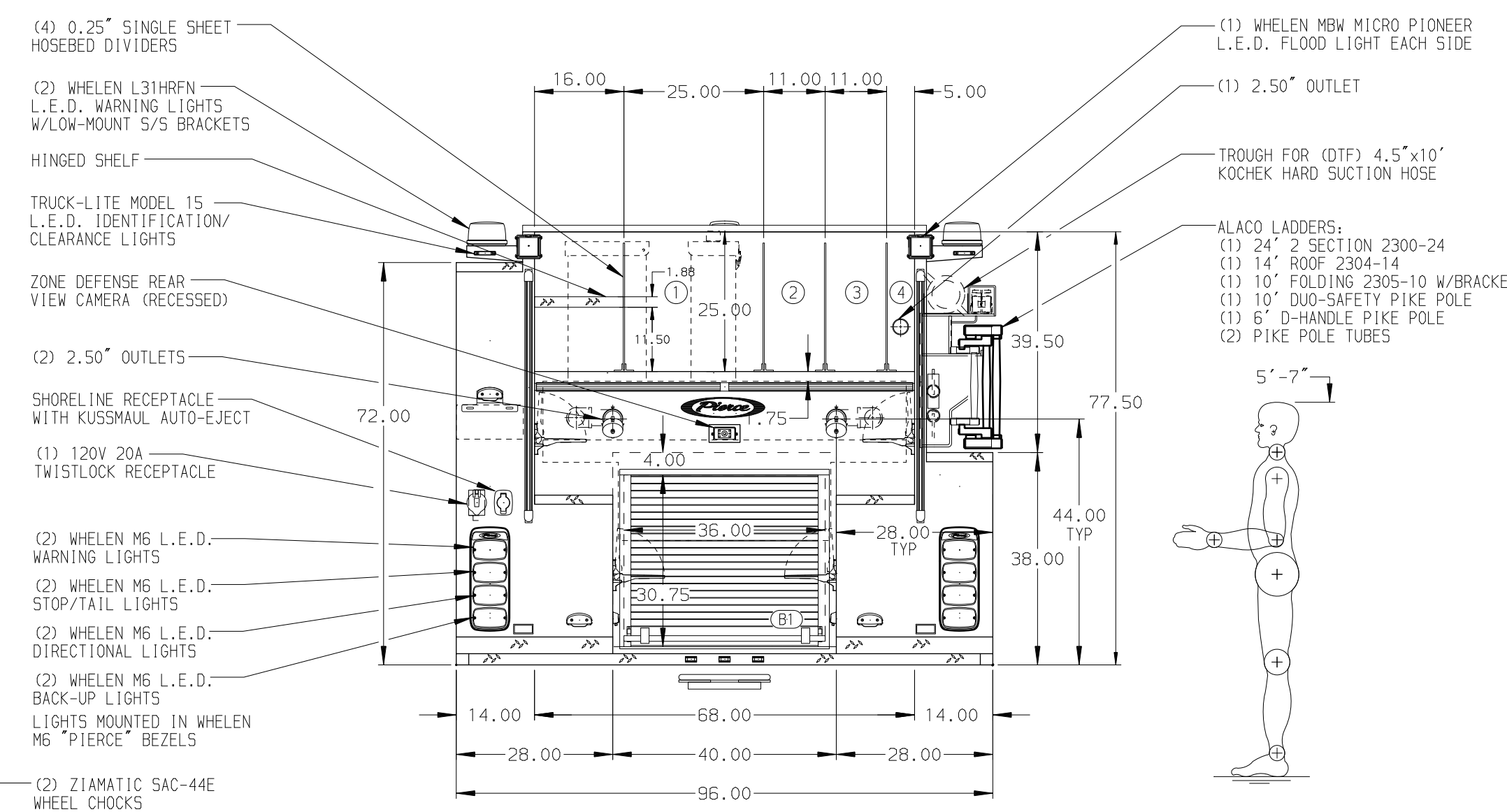


- HOSEBED CAPACITIES**
- ① 800' OF 5.00" D.J. SYNTHETIC ANGUS HOSE
  - ② 500' OF 2.50" D.J. POLY HOSE
  - ③ 500' OF 2.50" D.J. POLY HOSE
  - ④ 200' OF 1.75" HI-COMBAT HOSE



GALVANNEAL

MAXIMUM O.A.L. 354.50"

MAXIMUM O.A.H. 113.00"

**NOTE**  
 DIMENSIONS SHOWN ARE APPROXIMATE AND ARE SUBJECT TO MINOR DEVIATIONS AS MAY OCCUR OR BE NECESSARY IN CONSTRUCTION. MINOR DETAILS NOT SHOWN.

1. AIR INLET WITH DISCONNECT COUPLING LOCATED ON DS PUMP PANEL
2. PULL STRAP ON DOOR IN COMPARTMENT LS2
3. DRIP PAN GUARD FOR ROLL-UP DOOR LOCATED LS1, LS2, RS1, RS2 & B1
4. ONE ADJUSTABLE FULL WIDTH/DEPTH SHELF IN COMPARTMENT LS1, LS3, RS1, RS3 & B1
5. ONE FLOOR MOUNTED SLIDE-OUT TRAY IN COMPARTMENT LS1
6. SWING-OUT TOOL BOARD WITH PEGBOARD PATTERN IN COMPARTMENT LS2
7. PARTITION BETWEEN COMPARTMENTS LS1/B1 AND RS1/B1
8. ONE VERTICAL PARTITION IN COMPARTMENT LS1
9. 3/4" MARINE GRADE PLYWOOD ON BACK WALL OF COMPARTMENTS LS2

REV	DATE	BY	CH	ARROW XT
1	10DEC19	AMI	LPA	MAKE
2	12NOV19	AMI	LPA	PIERCE
3	27SEP19	AMI	LPA	MODEL

		JOB NO.	34048
		SCALE	DATE
TITLE	1500-D-500 GAL POLY W/20 GAL FOAM CELL, 140" BODY (2) X-LAYS, ALACO LADDERS ON P.S. BODY, HSH PS		
FOR	ALAMEDA COUNTY (CITY OF DUBLIN) DUBLIN, CALIFORNIA		
DWG NO.	34048AD		
DRAWN BY	AMI	CHECKED BY	SMA
SHEET SIZE	D	SHEET NO.	1 OF 1