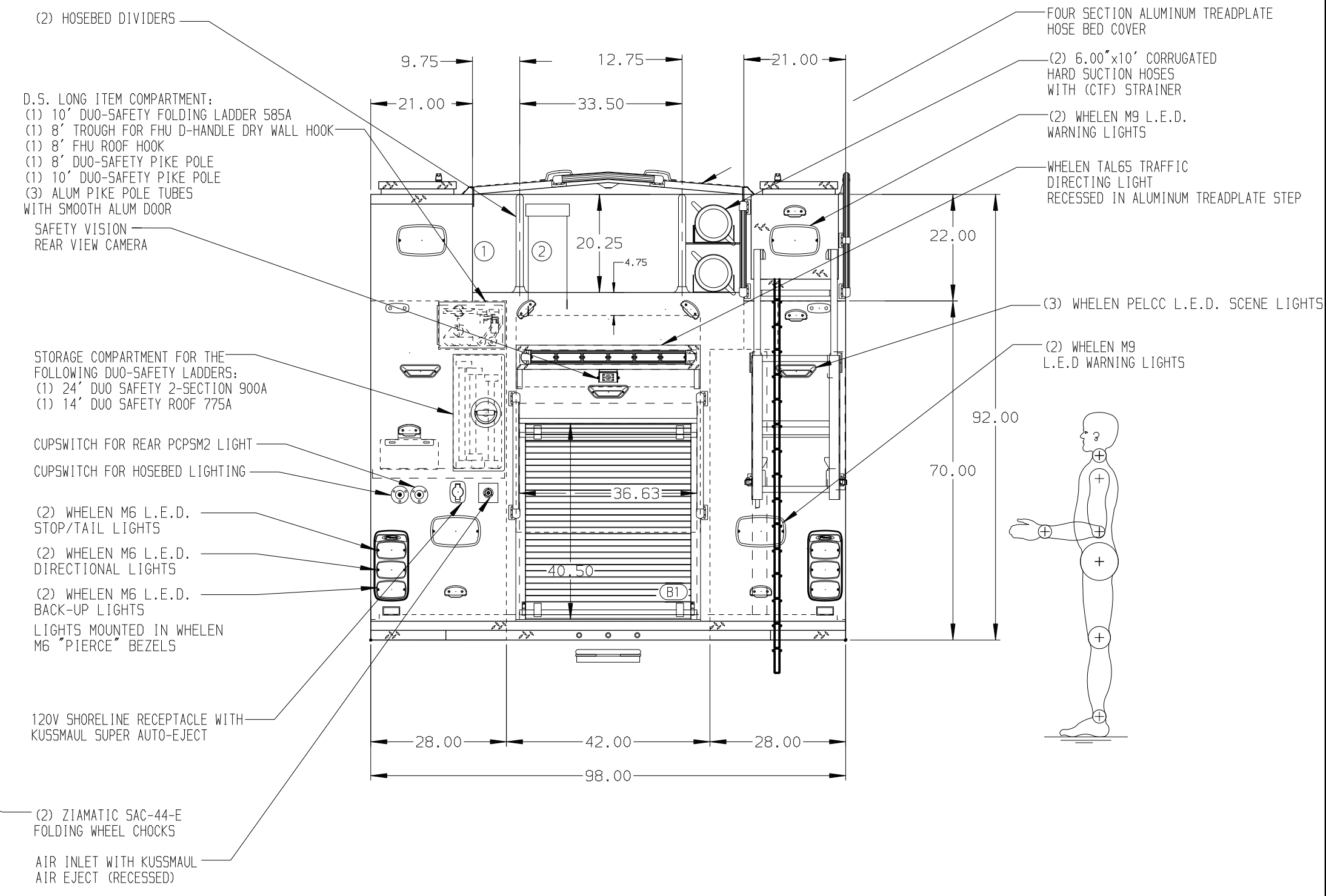
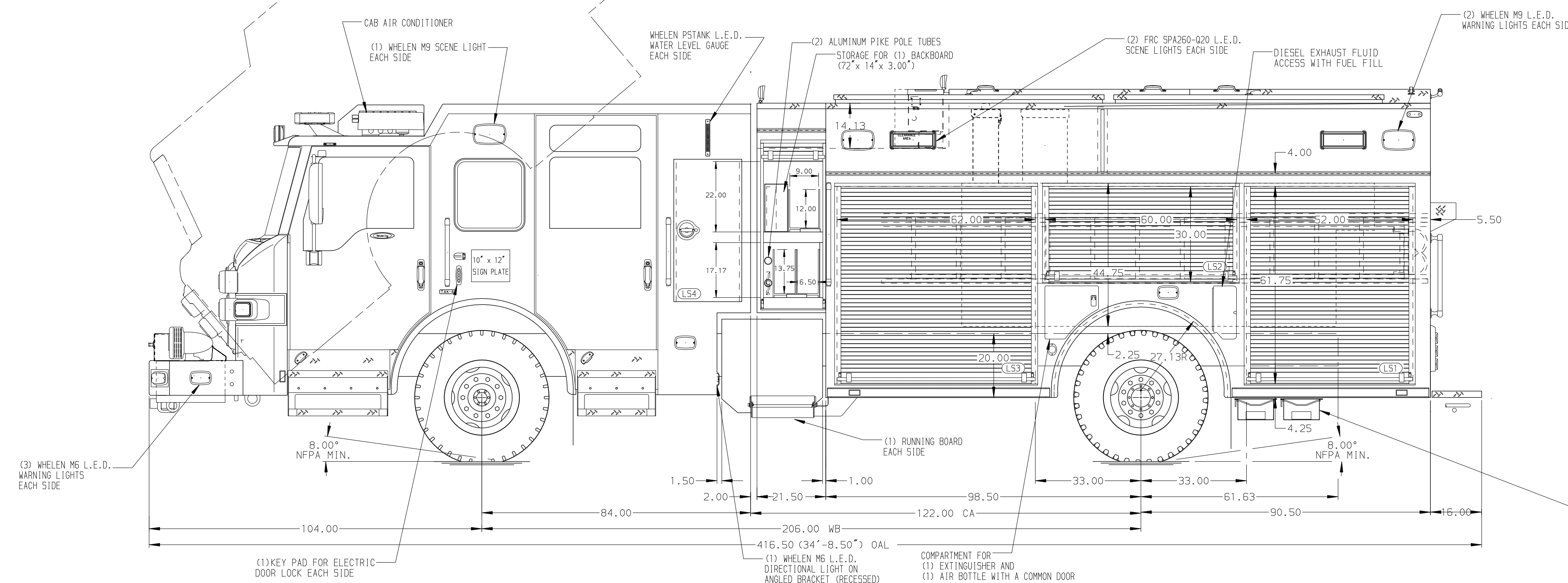


SURFACE DESIGNATION AND PATHWAY MARKINGS
HITCH RECEIVER WITH POWER FOR PORTABLE WINCH

HOSEBED CAPACITIES
① 400' OF 2.50" D.J. POLY HOSE
② 1100' OF 5.00" D.J. POLY HOSE



ALUMINUM BODY

SIDE ROLL AND FRONTAL IMPACT PROTECTION

NOTE
DIMENSIONS SHOWN ARE APPROXIMATE AND ARE SUBJECT TO MINOR DEVIATIONS AS MAY OCCUR OR BE NECESSARY IN CONSTRUCTION. MINOR DETAILS NOT SHOWN.

- BATTERY CHARGER LOCATED IN COMPARTMENT L53 MOUNTED TO CEILING
- BATTERY CHARGER INDICATOR LOCATED NEAR D.S. SEAT RISER WITH BRACKET
- SUB-FEED CIRCUIT BREAKER PANEL NEAR OTHER BREAKER BOX
- DUAL L.E.D. LIGHT STRIPS LOCATED IN HOSE BED
- TWO FULL WIDTH/DEPTH ADJUSTABLE SHELVES IN R53
- ONE 750LB FLOOR MOUNTED SLIDE-OUT TRAY IN L51 AND R51
- ONE ADJUSTABLE SLIDE-OUT TRAY IN 2
- ONE ADJUSTABLE TILT/SLIDE-OUT FULL WIDTH/DEPTH TRAY IN R52
- TWO SLIDE-OUT ALUMINUM TOOLBOARDS WITH PEGBOARD IN R53
- ONE 500LB FLOOR MOUNTED SLIDE-OUT TRAY IN B1 AND 2
- TWO SWING-OUT ALUMINUM TOOL BOARDS IN L51
- TWO DRAWER CTECH DRAWER ASSEMBLY IN L53
- ALUMINUM PEGBOARD WITH TRACKS ON THE REAR WALL OF L52 AND R51
- PAC TRAC INSTALLED IN L53
- MOUNTING BRACKET FOR HYDRAULIC CUTTER TOOL IN CENTER TOOL TRAY
- AIR OUTLET WITH SHUT OFF VALVE ON D.S. LOWER PUMP PANEL IN L53
- VERTICAL PARTITION IN COMPARTMENT 2
- AIR BAG RACK FOR 3 AIR BAGS IN R53
- ONE HORIZONTAL PARTITION IN L53
- ALUMINUM PEGBOARD ON THE EACH SIDE WALL OF R51
- (1) 120V DUPLEX RECEPTACLE ON THE REAR CENTER BACK WALL OF R54
- PARTITION BETWEEN COMPARTMENTS L51/B1 AND R51/B1

REV	DATE	BY	CH	VELOCITY
09NOV19	AMI	JJR		CHASSIS DATA
02OCT19	AMI	JJR		MAKE
29JUL19	LST	JJR		PIERCE
				MODEL

		JOB NO.	34072
		SCALE	DATE
TITLE	1500-D-775P 750 GAL OF WATER W/ 25 GAL FOAM CELL 189" PUC RESCUE, (3) X-LAYS, LADDERS THRU BODY		
FOR	DEERFIELD BEACH DEERFIELD BEACH, FLORIDA		
DWG NO.	34072AD		
	DRAWN BY	24JUL19	
	CHECKED BY	29JUL19	
	SHEET SIZE	SHEET NO.	
	D	1 OF 1	