

PUMPER BODY

Medium Aluminum 2nd Gen Pumper

CHASSIS

Enforcer Chassis

CHASSIS AXLE, FRONT, CUSTOM

20,000 Lb Dana Axle

AXLE, REAR

27,000 Lb Dana Axle

ENGINE

450 HP Cummins L9 Engine

TRANSMISSION

Allison 5th Gen, 3000 EVS P

BUMPER

19" Extended Stainless Steel

CAB

7010 Enforcer Cab

BODY

WATER TANK

750 Gallon Poly Water Tank

COMPT, PUMPER, REAR

44.50" FF RollUp 25.88" Deep Flush Rear Compt

COMPT, PUMPER, LEFT SIDE

152" RollUp Full Height & Depth Front & Rear

COMPT, PUMPER, RIGHT SIDE

152" RollUp Full Height Front & Rear FDLER

FIRE SUPPRESSION PUMPHOUSE

48" Control Zone Side Mount

PUMP

1500 GPM Waterous CSU

CROSSLAYS, 1.50"

1.50" Crosslay Not Required

CROSSLAYS, 2.50"

2.50" Crosslay Not Required

SPEEDLAYS

(2) 1.50" Standard Capacity

GENERATOR

Generator Not Required

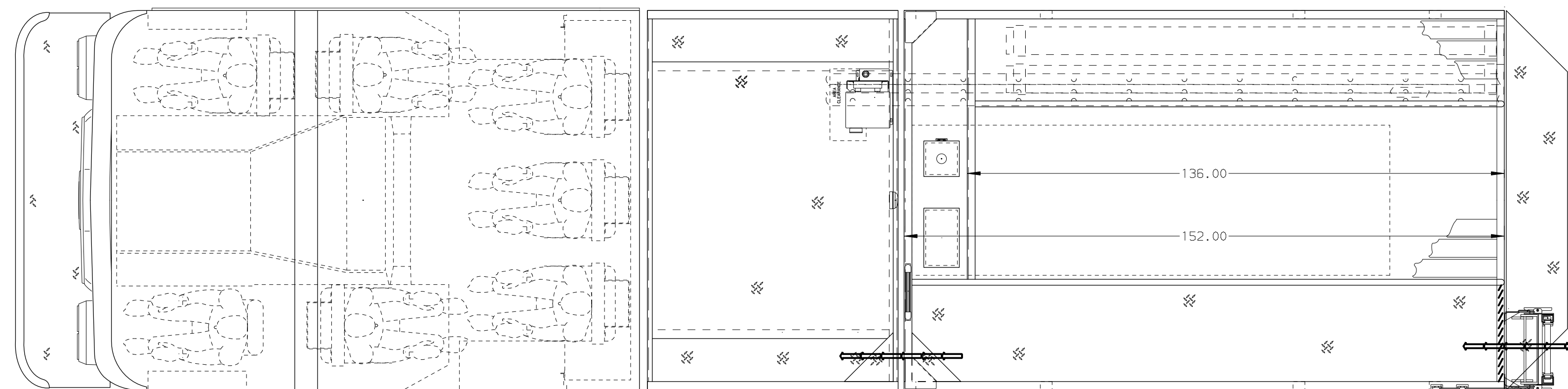
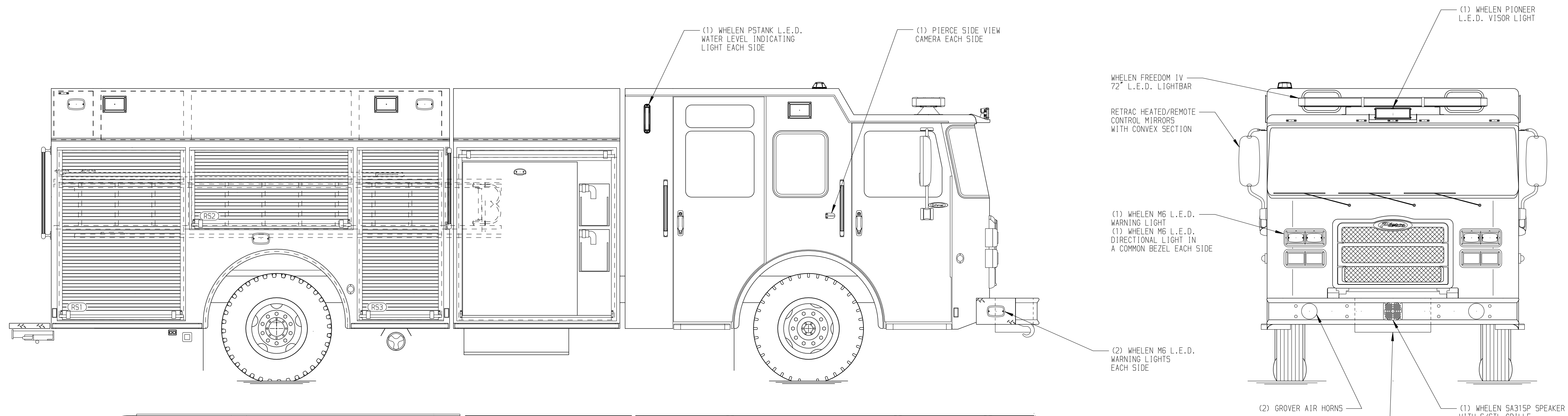
Foam System

Husky 3 Single Agent Foam System

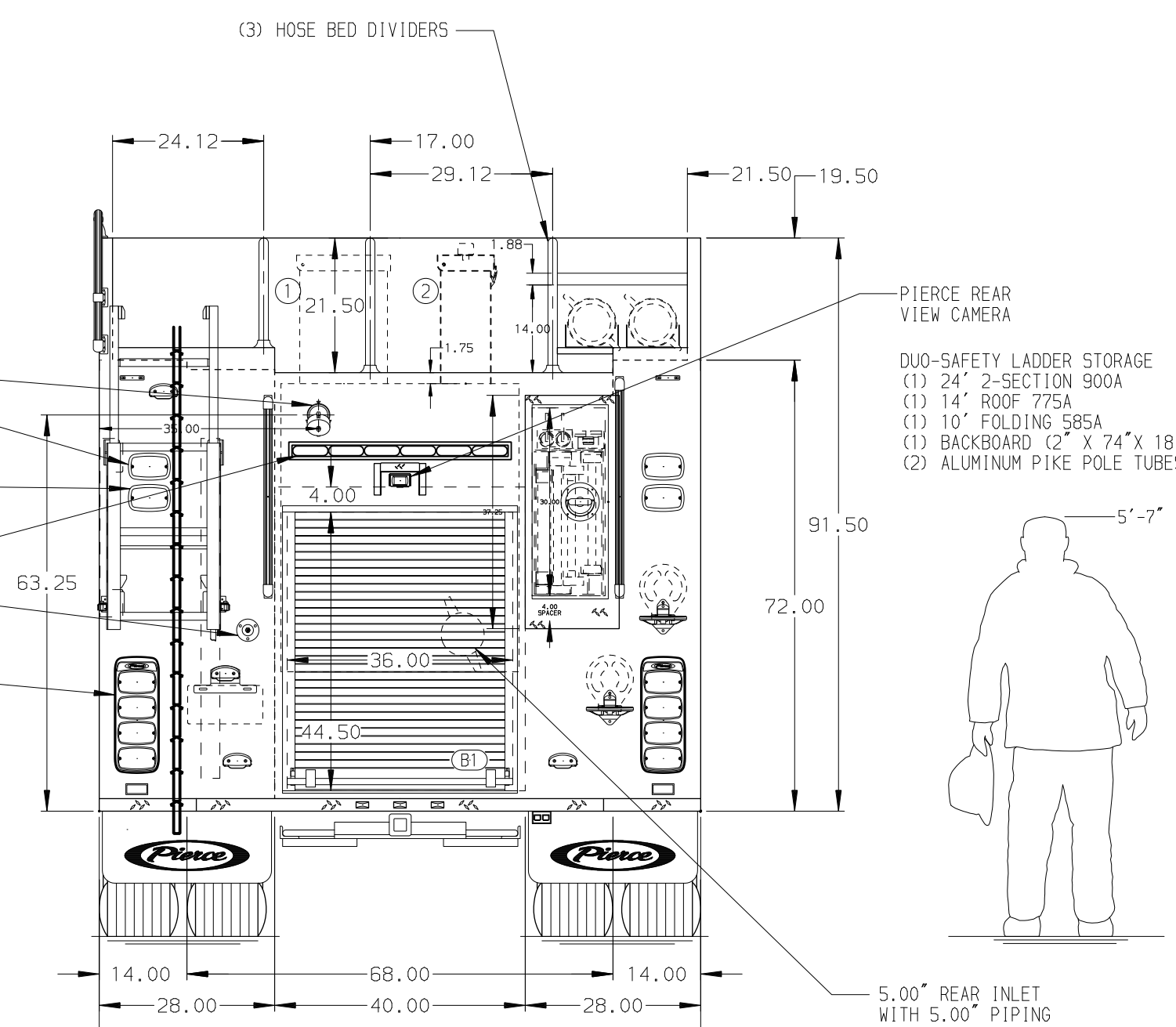
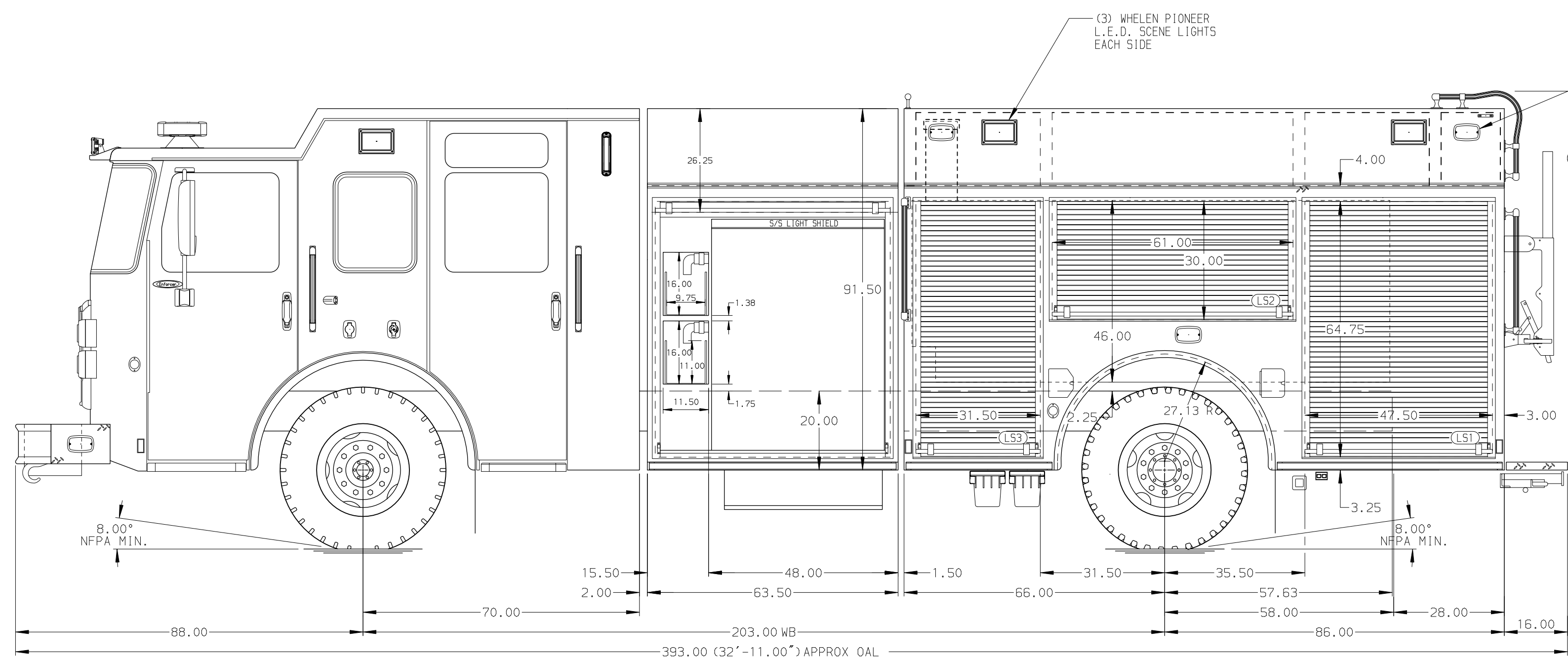
Foam Cell

20 Gallon Foam Cell, Not Reduced Water

Frontal Impact Protection



HOSEBED CAPACITY	
BED 1	600' OF 2.50" D.J. POLY HOSE
BED 2	600' OF 5.00" D.J. POLY HOSE



NOTE
DIMENSIONS SHOWN ARE APPROXIMATE AND ARE SUBJECT TO MINOR DEVIATIONS AS MAY OCCUR OR BE NECESSARY IN CONSTRUCTION. MINOR DETAILS NOT SHOWN.

- ONE 1.50" OUTLET WITH 2.00" PIPING AND SWIVEL LOCATED IN CENTER BUMPER TRAY
- SHOULDER RECEPTACLE WITH KUSSMALL SUPER AUTO-EJECT LOCATED ON DRIVER SIDE OF THE CAB
- AIR INLET WITH KUSSMALL AUTO EJECT LOCATED ON DRIVER SIDE OF THE CAB
- BATTERY CHARGER LOCATED IN COMPARTMENT PER SHOP ORDER
- BATTERY CHARGE INDICATOR LOCATED ON THE DRIVER SIDE SEAT RISER
- AUTOMATIC TIRE CHAINS
- FIVE ADJUSTABLE SHELVES LOCATED PER SHOP ORDER
- TWO FLOOR MOUNTED SLIDE-OUT TRAYS LOCATED PER SHOP ORDER
- ONE CTECH DRAWER ASSEMBLY LOCATED PER SHOP ORDER
- TWO 120V DUPLEX RECEPTACLES LOCATED PER SHOP ORDER
- ONE SWING-OUT TOOLBOARD LOCATED PER SHOP ORDER
- NINE STORAGE BINS FOR AIR BOTTLES LOCATED PER SHOP ORDER

REV	DATE	BY	CH	ENFORCER
18DEC19	COL	KBO		PIERCE
07NOV19	COL	KBO		MODEL

		JOB NO.	34111
		SCALE	DATE
TITLE	Pierce Pumper Approval Drawing		
FOR	La Crescent Fire Department		
DWG NO.	34111AD		
	CHECKED BY	KBO	24JUL19
	SHEET SIZE	D	SHEET NO. 1 OF 1