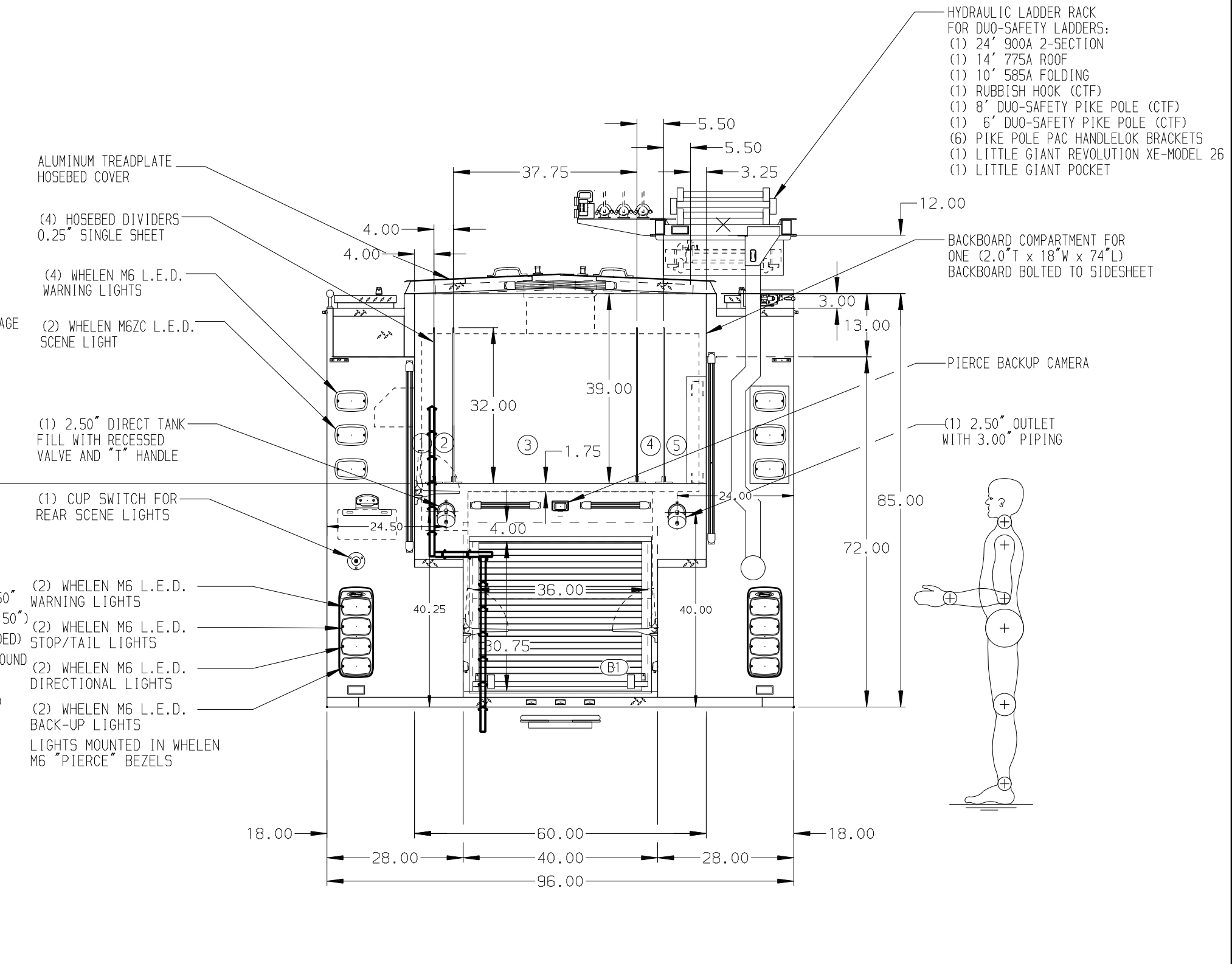


- HOSEBED CAPACITIES**
- ① 200' OF 1.75" DJP HOSE
 - ② 200' OF 1.75" DJP HOSE
 - ③ 1000' OF 5.00" DJP HOSE
 - ④ 200' OF 2.50" DJP HOSE
 - ⑤ 200' OF 2.50" DJP HOSE



ALUMINUM BODY

SIDE ROLL AND FRONTAL IMPACT PROTECTION

NOTE
DIMENSIONS SHOWN ARE APPROXIMATE
AND ARE SUBJECT TO MINOR DEVIATIONS
AS MAY OCCUR OR BE NECESSARY IN
CONSTRUCTION.
MINOR DETAILS NOT SHOWN.

1. KUSSMAUL AIR COMPRESSOR LOCATED IN COMPARTMENT LS3
2. AIR INLET WITH DISCONNECT COUPLING IN THE DRIVER SIDE STEPPWELL
3. BATTERY CHARGER LOCATED IN COMPARTMENT LS3
4. DRIP PAN GUARD FOR ROLL-UP DOOR LOCATED ALL BODY DOORS
5. S/STL SCUFFPLATES AT CAB DOOR JAMBS
6. ONE FULL WIDTH/DEPTH ADJUSTABLE SHELF IN COMPARTMENTS LS1,LS3,RS1,RS3,B1
7. ONE FLOOR MOUNTED SLIDE-OUT TRAY IN COMPARTMENT B1
8. SWING-OUT TOOL BOARD WITH PEGBOARD PATTERN IN COMPARTMENT RS2
9. TWO ZICO SCBA HOLDER BRACKETS LOCATED IN LS2,RS1
10. HORIZONTAL EQUIPMENT MOUNTING TRACKS IN COMPARTMENTS LS2,RS1

11. BATTERY CHARGE INDICATOR LOCATED ON DRIVER SIDE BEHIND CAB DOOR
12. S/STL SCUFFPLATES AROUND AIR BOTTLE AND EXTINGUISHER COMPARTMENT OPENINGS
13. TWO 120V NEMA DUPLEX RECEPTACLES LOCATED IN CAB AND COMPARTMENT RS3

REV	DATE	BY	CH	ENFORCER
06DEC19	LME	MSA		CHASSIS DATA
12NOV19	LME	GRM		MAKE
29OCT19	LME	MSA		PIERCE
18OCT19	LME	AZA		MODEL
25JUL19	LME	KOU		

		JOB NO.	34137
		SCALE	DATE
TITLE	1500-D-775G W/25 FOAM, 152" SPECIAL UPPER DEPTH BODY 50" SIDE CONTROL ENCLOSED PUMPHOUSE, LADDER RACK	DRAWN BY	LME
FOR	ORTING VALLEY FIRE AND RESCUE ORTING, WASHINGTON	CHECKED BY	KOU
DWG NO.	34137AD	SHEET SIZE	SHEET NO.
		D	1 OF 1