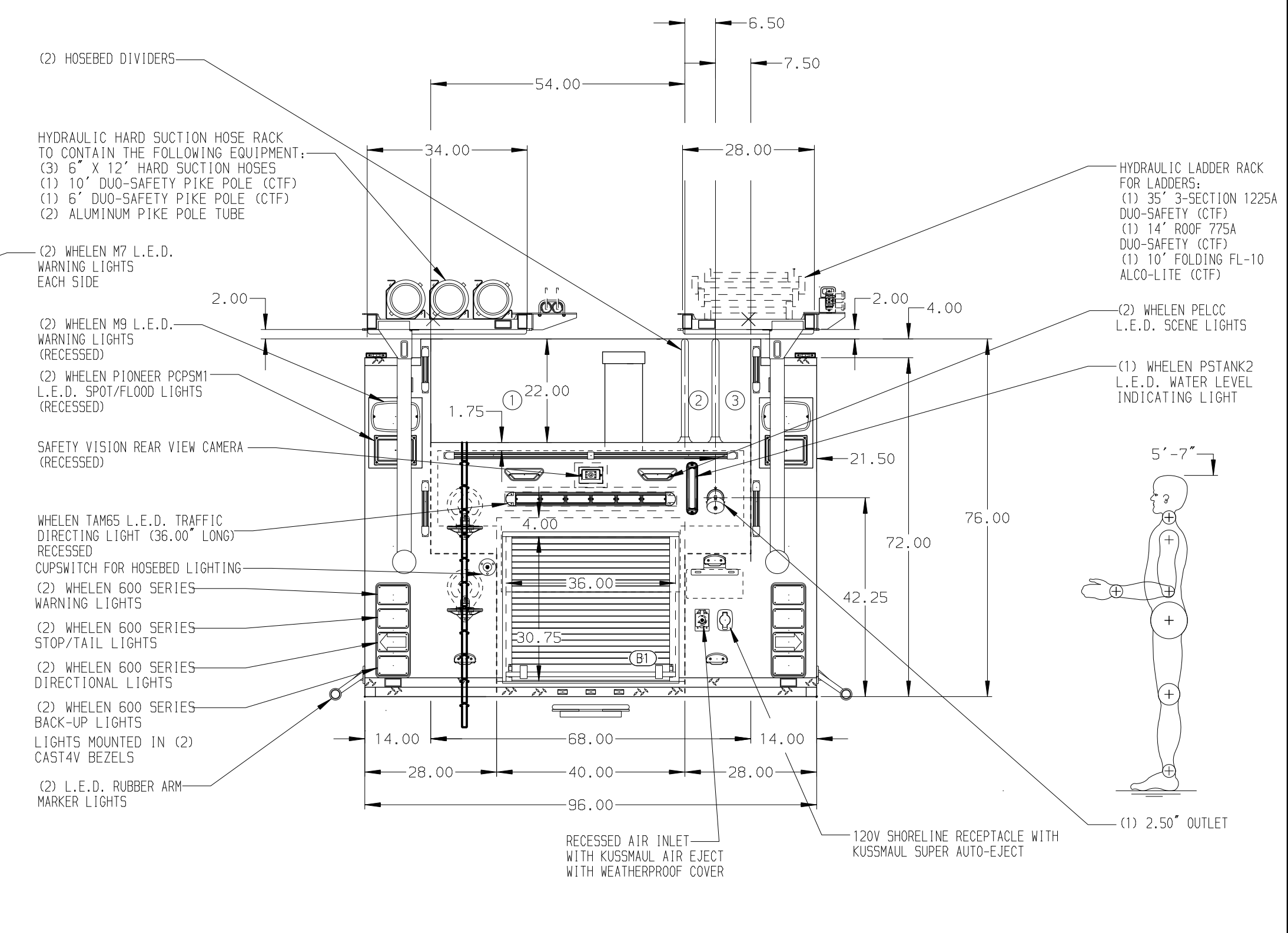
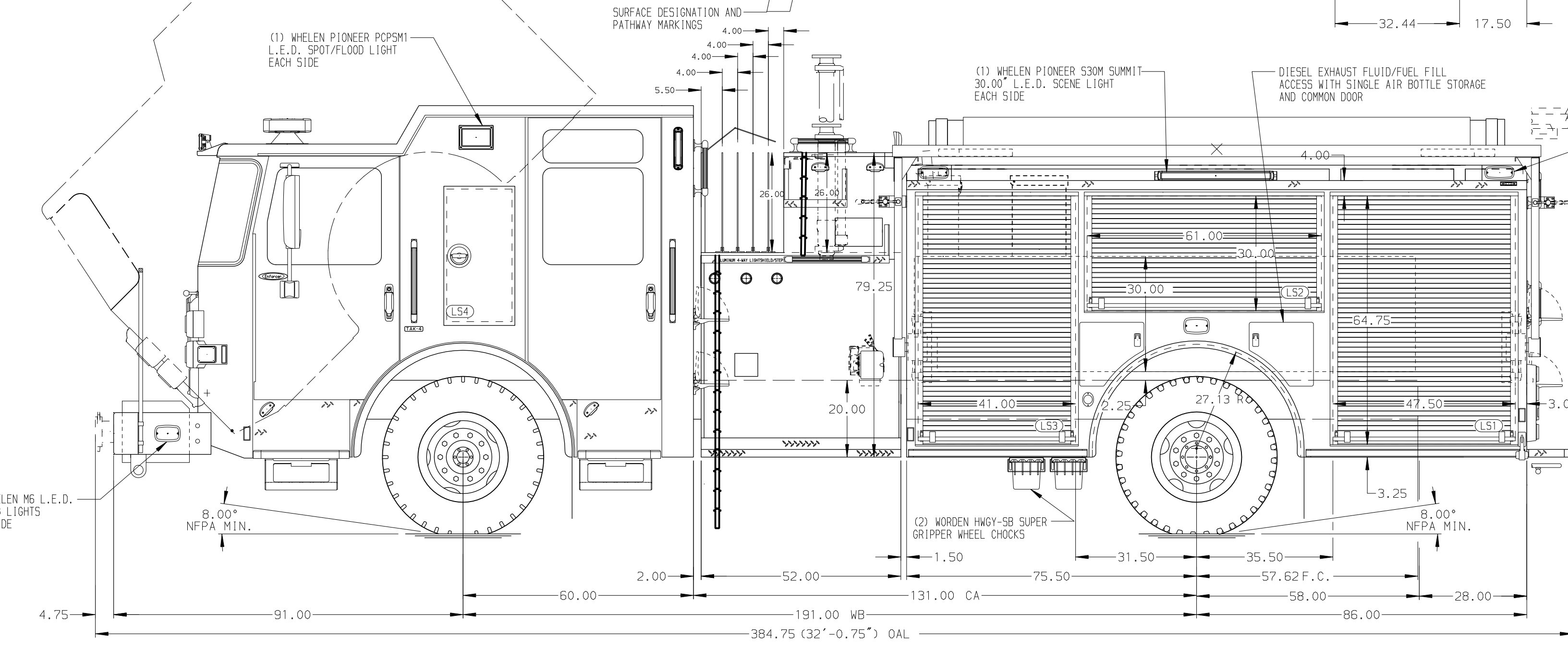


- HOSEBED CAPACITIES
- ① 2000' OF 5.00" HOSE
 - ② 150' OF 2.50" HOSE
 - ③ 150' OF 2.50" HOSE



ALUMINUM BODY

MAXIMUM O.A.H. 115.00"

SIDE ROLL AND FRONTAL IMPACT PROTECTION

NOTE
DIMENSIONS SHOWN ARE APPROXIMATE AND ARE SUBJECT TO MINOR DEVIATIONS AS MAY OCCUR OR BE NECESSARY IN CONSTRUCTION. MINOR DETAILS NOT SHOWN.

1. ONSPOT AUTOMATIC TIRE CHAINS TO BE PROVIDED AT THE REAR
2. BATTERY CHARGER/COMPRESSOR BEHIND THE DRIVER'S SEAT
3. DUAL L.E.D. LIGHT STRIPS LOCATED IN HOSE BED
4. ONE ADJUSTABLE FULL WIDTH/DEPTH SHELF IN L51, L53, B1, R51, AND R53
5. ALUMINUM SWING-OUT TOOLBOARD WITH PAC TRAC IN R52
6. ONE FLOOR MOUNTED SLIDE-OUT TRAY IN L51, L53, B1, R51, AND R53
7. FIVE ZIMATIC SCBA HOLDER BRACKETS IN L52
8. PAC TRAC ON BACK WALL OF L52, L53, AND R52
9. AKRON EDUCTOR SINGLE AGENT FOAM SYSTEM
10. 120V NEMA DUPLEX RECEPTACLE IN L51, L53, B1, R51, AND R53
11. ONE HANNAY ELECTRIC REWIND CORD REEL MODEL ECR1618-17-18 LOCATED IN PS PUMP HOUSE WITH 200' OF 10/3 CABLE WITH CAPTIVE ROLLER ASSEMBLY
12. BATTERY CHARGER INDICATOR ON THE D.S. SEAT RISER

REV	DATE	BY	CH	ENFORCER
06DEC19	LST	DTS		CHASSIS DATA
07OCT19	LST	DTS		MAKE
17SEP19	LST	DTS		PIERCE
19JUL19	LST	AZA		MODEL

		JOB NO.	34143
		SCALE	DATE
TITLE 1500-D-770P, 750 GAL OF WATER W/ 20 GAL FOAM CELL 161" FH FDLER, (2) HYDRAULIC LADDER RACKS, (5) X-LAYS	FOR EAST HAMPTON VOLUNTEER FIRE DEPARTMENT EAST HAMPTON, CONNECTICUT	DRAWN BY	LST
		CHECKED BY	AZA
DWG NO. 34143AD	NO.	SHEET SIZE	D
		SHEET NO.	1 OF 1