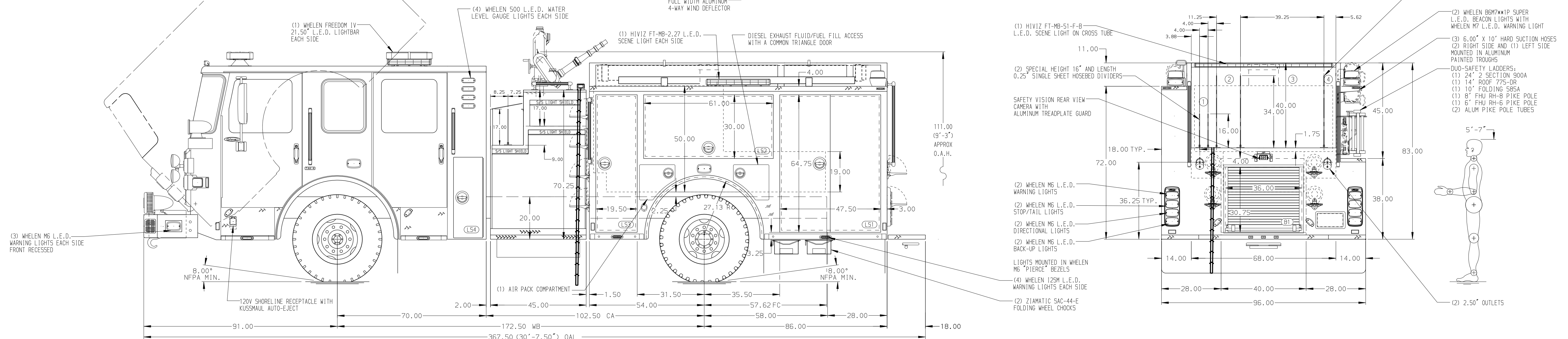


- HOSEBED CAPACITIES
- ① 400' OF 1.50" MERCEDES HOSE
  - ② 500' OF 3.00" HOSE
  - ③ 1500' OF 4.00" HOSE
  - ④ 250' OF 2.00" HOSE



ALUMINUM BODY

SIDE ROLL AND FRONTAL IMPACT PROTECTION

NOTE  
DIMENSIONS SHOWN ARE APPROXIMATE AND ARE SUBJECT TO MINOR DEVIATIONS AS MAY OCCUR OR BE NECESSARY IN CONSTRUCTION. MINOR DETAILS NOT SHOWN.

1. AIR INLET WITH DISCONNECT COUPLING ON LEFT SIDE PUMP PANEL
2. BATTERY CHARGER IN L53
3. BATTERY CHARGER INDICATOR LOCATED ON DRIVER'S SEAT RISER
4. REVERSED HINGED DOOR ON L53
5. ONE FULL WIDTH/DEPTH ADJUSTABLE SHELF IN L51, L53, AND R52
6. ONE 2/3 TRANSVERSE SHELF WITH OPEN IN END IN B1/R1
7. 120V NEMA DUPLEX RECEPTACLE IN L51 AND R51
8. ALUMINUM PEGBOARD WITH TRACKS ON THE BACK WALL OF L51, L52, AND L53

REV	DATE	BY	CH	ENFORCER
13JAN20	LST	CSH		CHASSIS DATA
28OCT19	LST	DTS		MAKE
15OCT19	LST	DTS		PIERCE
01OCT19	LST	DTS		MODEL

		JOB NO.	34196
		SCALE	DATE
TITLE	1500-D-750G POLY, 140" BODY, (2) 1.75" CROSSLAYS, DELUGE, BOOSTER REEL, LADDERS ON LOW SIDE	DRAWN BY	LST
FOR	SAINT LEONARD VOL. FIRE DEPT. SAINT LEONARD, MARYLAND	CHECKED BY	NPE
DWG NO.	34196AD	SHEET SIZE	SHEET NO.
		D	1 OF 1