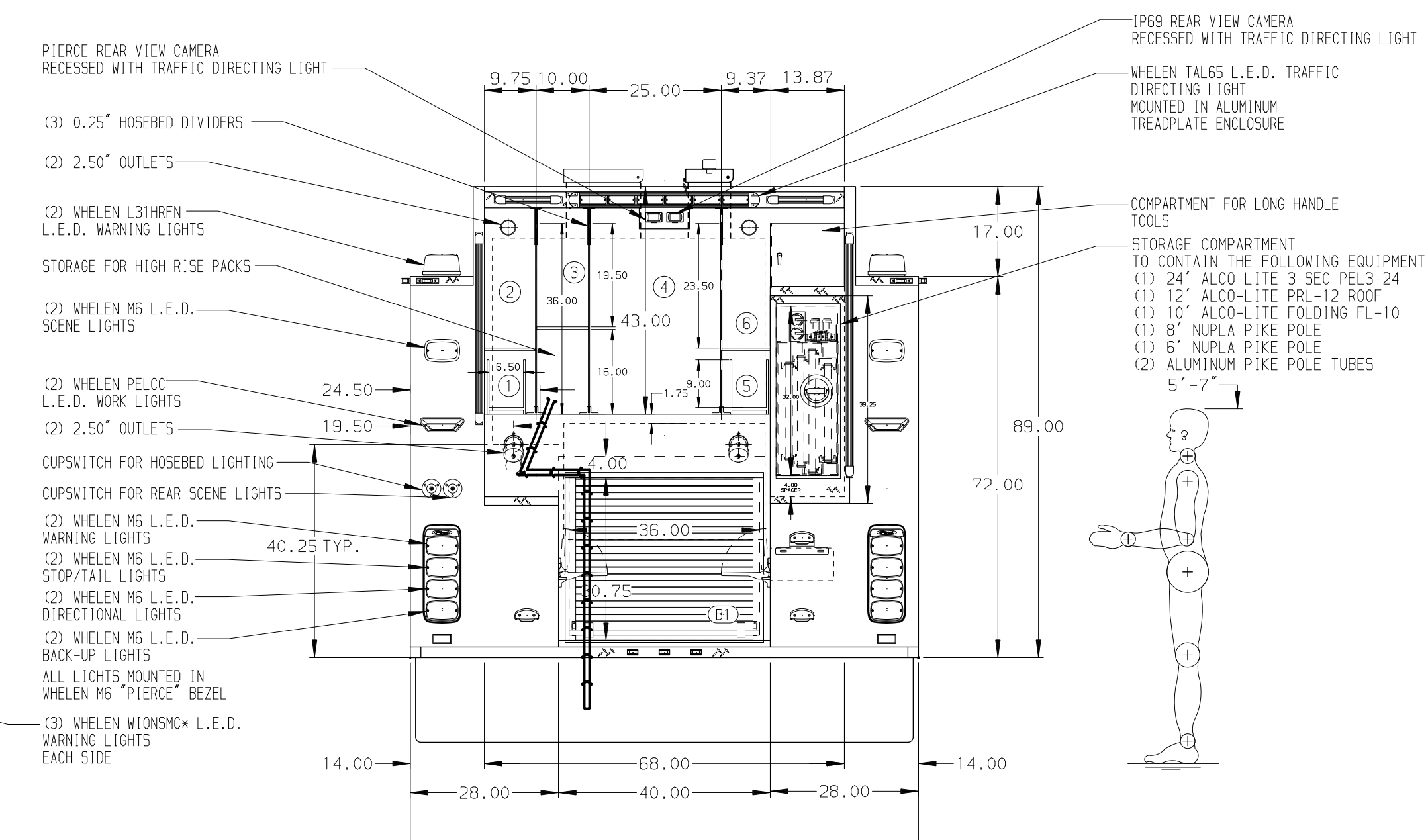
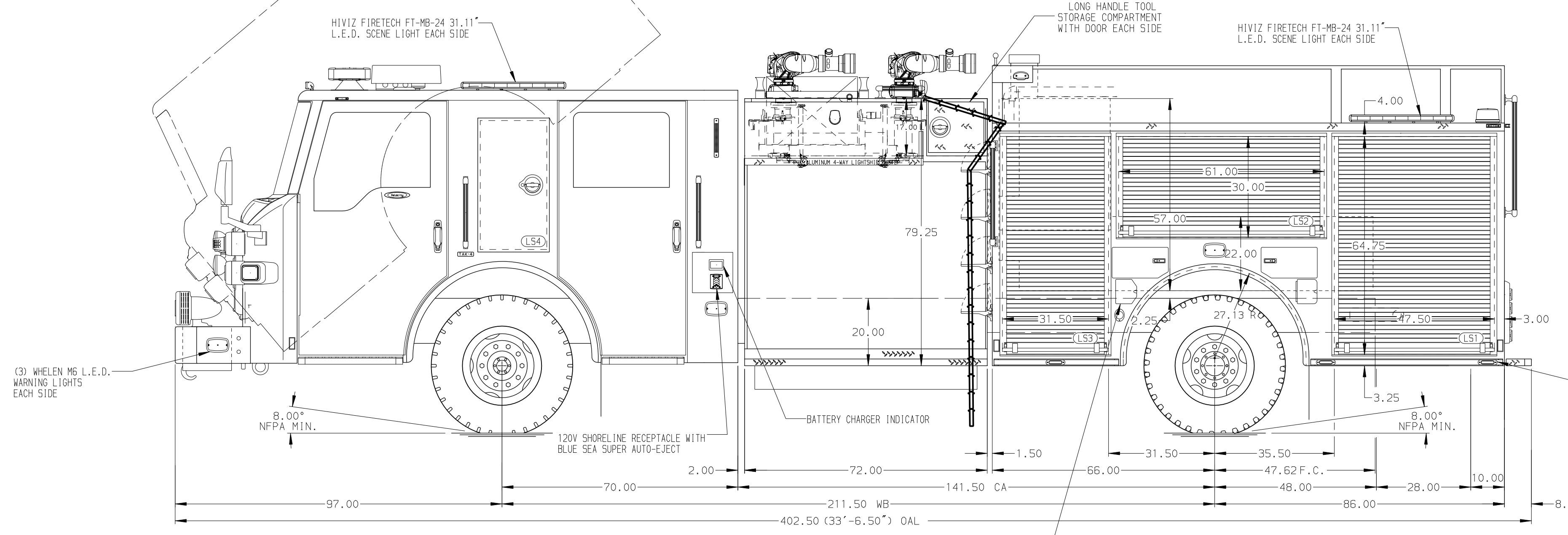


- HOSEBED CAPACITIES**
- ① - 200' OF 1.75" HOSE IN A REMOVABLE TRAY
 - ② - 250' OF 2.50" HOSE
 - ③ - 500' OF 2.50" HOSE
 - ④ - 1000' OF 5.00" HOSE
 - ⑤ - 200' OF 1.75" HOSE IN A REMOVABLE TRAY
 - ⑥ - 250' OF 2.50" HOSE



ALUMINUM BODY MAXIMUM O.A.L. 406.50" MAXIMUM O.A.H. 125.00" SIDE ROLL AND FRONTAL IMPACT PROTECTION

NOTE
DIMENSIONS SHOWN ARE APPROXIMATE AND ARE SUBJECT TO MINOR DEVIATIONS AS MAY OCCUR OR BE NECESSARY IN CONSTRUCTION. MINOR DETAILS NOT SHOWN.

1. ONSPOT AUTOMATIC TIRE CHAINS TO BE PROVIDED AT REAR
2. WHEEL CHOCKS AND BRACKETS (CTF)
3. AIR INLET WITH DISCONNECT COUPLING ON D.S. STEP WELL
4. AIR OUTLET WITH SHUT-OFF VALVE ON D.S. PUMP PANEL
5. BATTERY CHARGER MOUNTED BEHIND DRIVER'S SEAT
6. DUAL L.E.D. LIGHT STRIPS LOCATED IN HOSE BED
7. DRIP PAN GUARD FOR ROLL-UP DOOR IN EACH BODY COMPARTMENT
8. ONE FULL WIDTH/DEPTH ADJUSTABLE SHELF IN L51, L53, R51, R52, AND R53
9. ONE ADJUSTABLE SLIDE-OUT TRAY IN L51, R51, R53
10. ONE FULL WIDTH/DEPTH FLOOR MOUNTED SLIDE-OUT TRAY WITH SIDE SLIDES IN R51, R53

11. ONE SWING-OUT TOOLBOARD IN COMPARTMENT-L52
12. CTECH DRAWER ASSEMBLY IN L53
13. PAC TRAC ON BACK WALL OF L51 AND R51
14. HALE FOAM LOGIX 5.0 FOAM SYSTEM
15. ONE 120V NEMA DUPLEX RECEPTACLE IN EACH EMS COMPARTMENT
16. ONE DRAWER CTECH DRAWER ASSEMBLY IN L53
17. PAC TRAC INSTALLED IN BOTTOM OF CTECH DRAWER IN L53

REV	DATE	BY	CH	VELOCITY
1	11NOV19	LST	SMA	CHASSIS DATA
2	04NOV19	LST	SMA	MAKE
3	21OCT19	LST	SMA	PIERCE
4	10OCT19	BST	SMA	MODEL

		JOB NO.	34214
		SCALE	1:24
TITLE 3000-D-550P 500 WATER, 50 FOAM, 152' PUMPER BODY (2) BOOSTER REELS, HALE FOAM LOGIX SYSTEM, (2) DELUGE'S	FOR KNOXVILLE FIRE DEPARTMENT KNOXVILLE, TENNESSEE	DRAWN BY	LST
		CHECKED BY	SMA
DWG NO. 34214AD	DATE 09AUG19	SHEET SIZE	D
		SHEET NO.	1 OF 1