

PUMPER BODY

Long Aluminum 2nd Gen Pumper

CHASSIS

Enforcer Chassis

CHASSIS AXLE, FRONT, CUSTOM
20,000 Lb Dana Axle

AXLE, REAR
31,000 Lb Dana Axle

ENGINE
450 HP Cummins L9 Engine

TRANSMISSION
Allison 5th Gen, 3000 EVS P

BUMPER
19" Extended Painted Steel

CAB
7010 Enforcer Cab

BODY WATER TANK
1000 Gallon Poly Water Tank

COMPT, PUMPER, REAR
44.50" FF RollUp Rear Compt

COMPT, PUMPER, LEFT SIDE
171" RollUp Full Height Front & Rear FDLR

COMPT, PUMPER, RIGHT SIDE
171" RollUp Full Height Front & Rear FDLR

FIRE SUPPRESSION PUMPHOUSE
45" Control Zone Side Mount

PUMP

1500 GPM Waterous CSU

CROSSLAYS, 1.50"
(2) 1.50" Standard Capacity

CROSSLAYS, 2.50"
2.50" Crosslay Not Required

SPEEDLAYS
Speedlays Not Required

GENERATOR
Generator Not Required

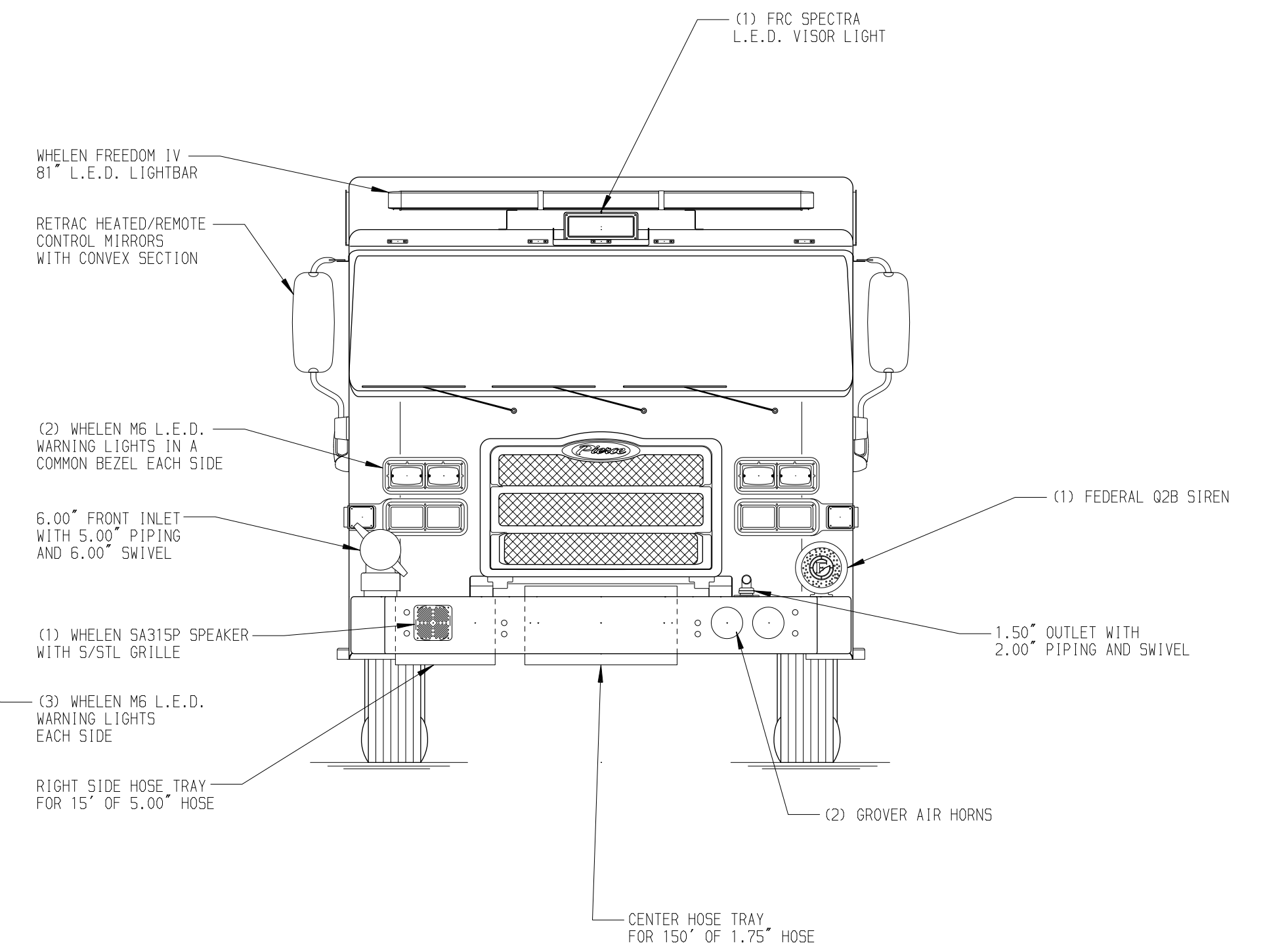
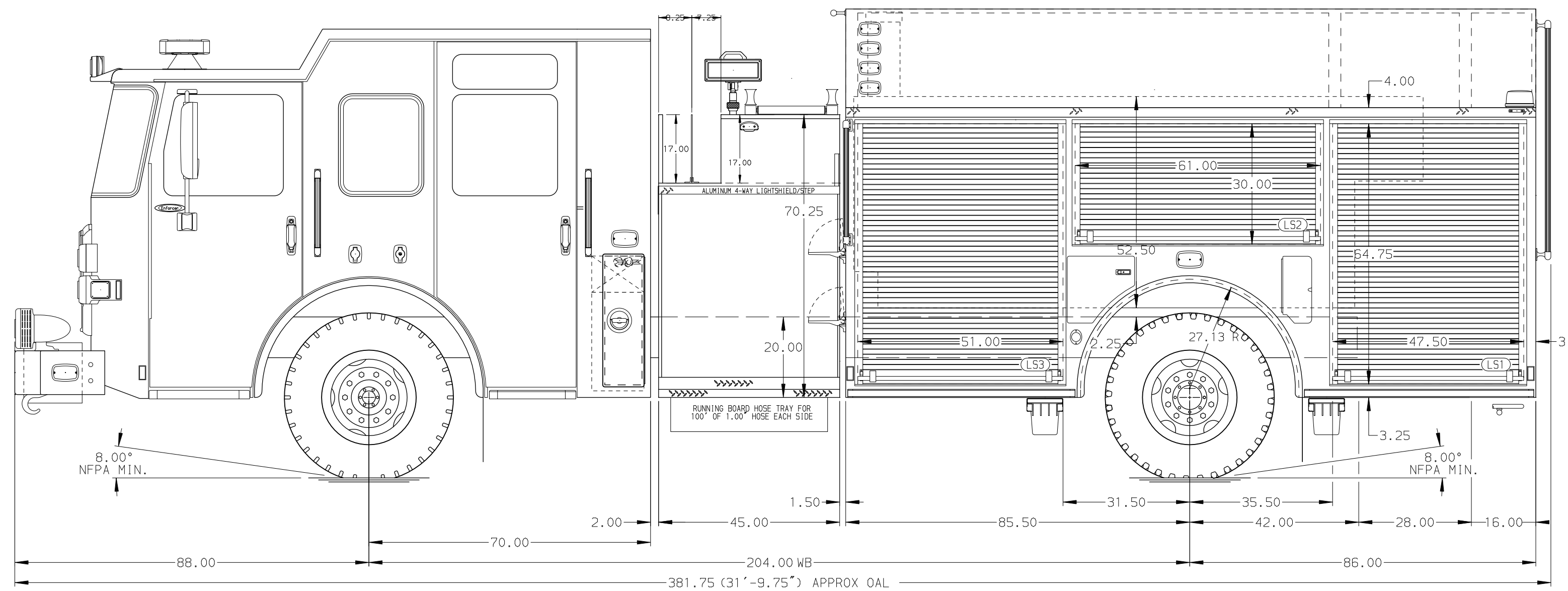
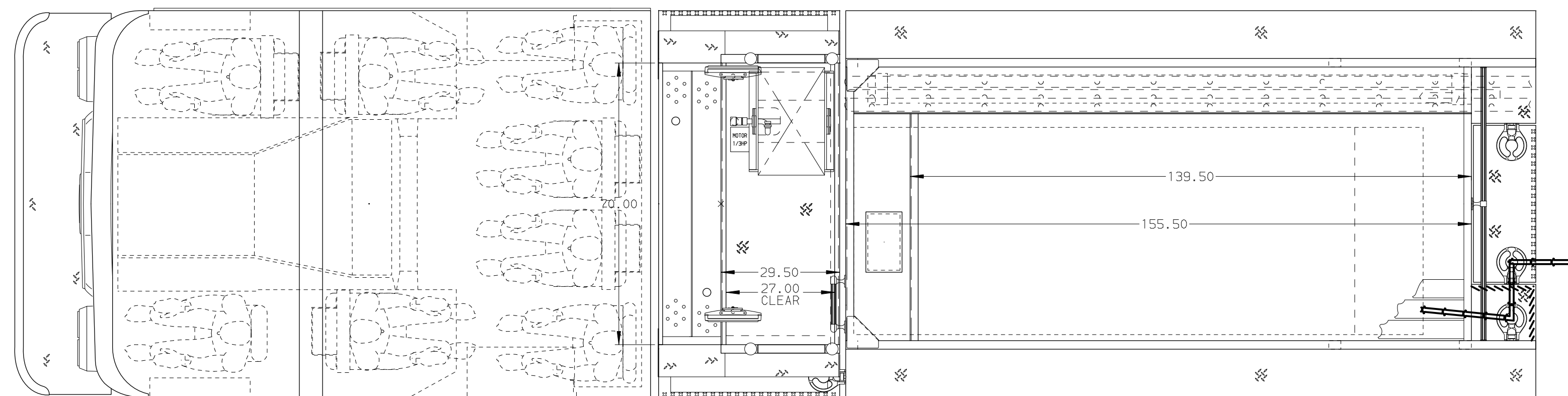
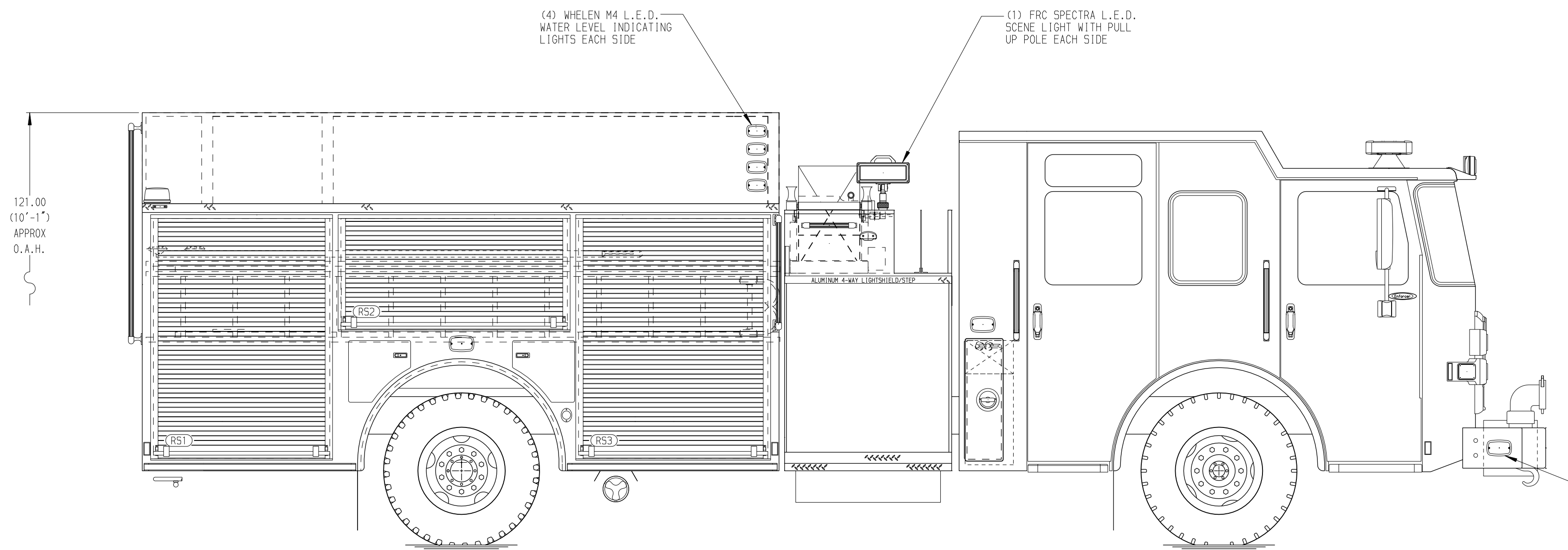
Foam System
Foam System Not Required

Foam Cell
Foam Cell Not Required

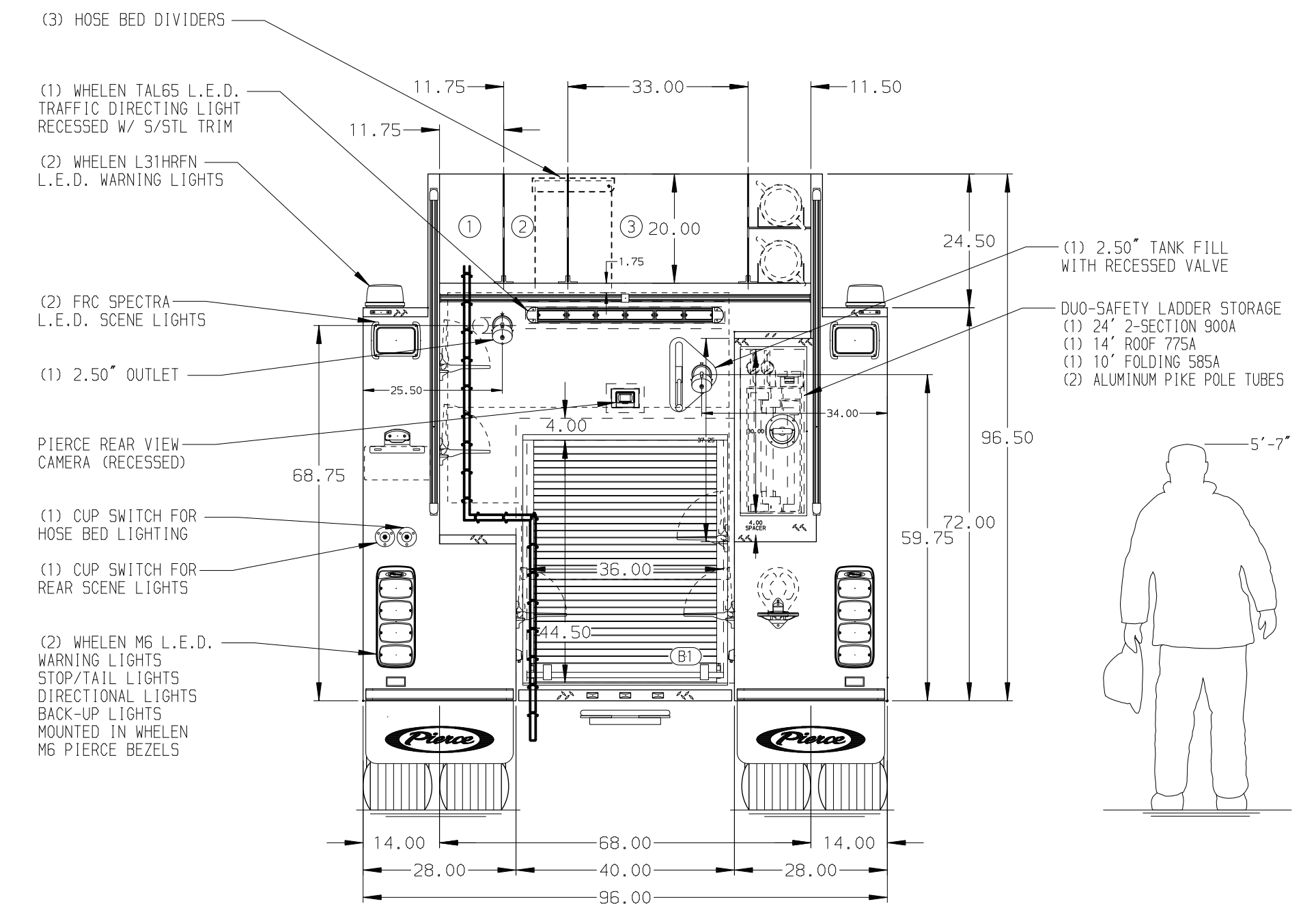
NOTE
DIMENSIONS SHOWN ARE APPROXIMATE AND ARE SUBJECT TO MINOR DEVIATIONS AS MAY OCCUR OR BE NECESSARY IN CONSTRUCTION. MINOR DETAILS NOT SHOWN.

- 1. SHORELINE RECEPTACLE WITH KUSSMAUL SUPER AUTO-EJECT LOCATED ON DRIVER SIDE OF THE CAB
- 2. AIR INLET WITH DISCONNECT COUPLING ON THE DRIVER SIDE OF THE CAB
- 3. BATTERY CHARGER LOCATED BEHIND DRIVER'S SEAT
- 4. BATTERY CHARGE INDICATOR LOCATED ON THE DRIVER SIDE SEAT RISER
- 5. AUTOMATIC TIRE CHAINS
- 6. FIVE ADJUSTABLE SHELVES LOCATED PER SHOP ORDER
- 7. FOUR FLOOR MOUNTED SLIDE-OUT TRAYS LOCATED PER SHOP ORDER
- 8. TWO ADJUSTABLE SLIDE-OUT TRAYS LOCATED PER SHOP ORDER

- 9. PAC TRAC LOCATED PER SHOP ORDER
- 10. PARTITIONS BETWEEN COMPARTMENT L51/B1 & R51/B1
- 11. TWO 120V 7-PLACE RECEPTACLES LOCATED PER SHOP ORDER
- 12. HANNAY BOOSTER REEL MODEL SBZF24-28-29-12 W/ 200' OF 1.00" BOOSTER HOSE LOCATED IN CARGO AREA



HOSEBED CAPACITY	
BED 1	500' OF 3.00" D.J. POLY HOSE
BED 2	500' OF 3.00" D.J. POLY HOSE
BED 3	1000' OF 5.00" D.J. POLY HOSE



		JOB NO.	34231
		SCALE	DATE
TITLE Pierce Pumper Approval Drawing		DRAWN BY	26AUG19
		CHECKED BY	27AUG19
FOR Township of Jefferson		SHEET SIZE	SHEET NO.
		DWG NO.	34231AD
REV DATE BY CH ENFORCER		D	1 OF 1