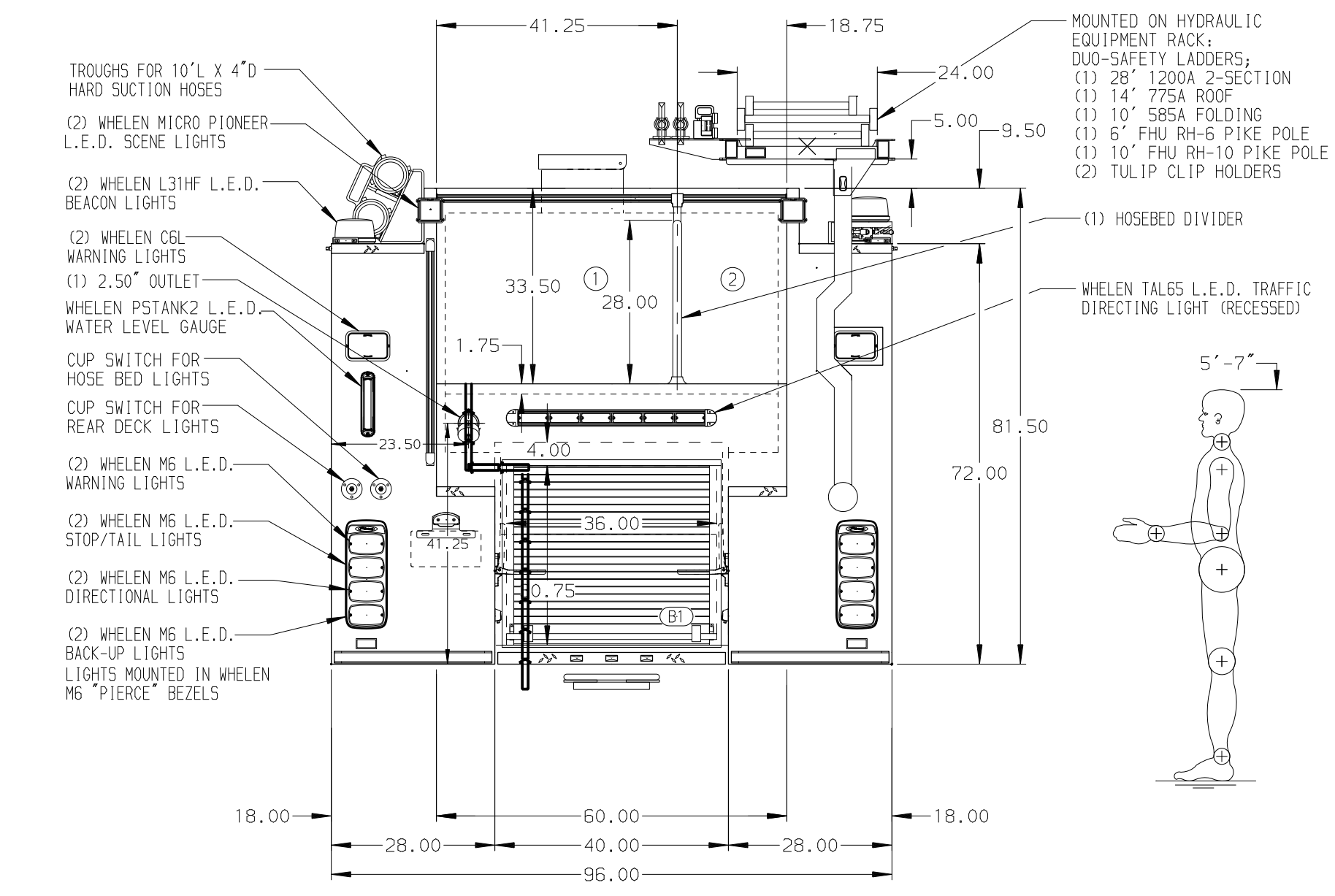


HOSEBED CAPACITIES

① 1000' OF 4.00" DJ HOSE

② 600' OF 3.00" DJ HOSE



ALUMINUM BODY

SIDE ROLL AND FRONTAL IMPACT PROTECTION

NOTE  
DIMENSIONS SHOWN ARE APPROXIMATE AND ARE SUBJECT TO MINOR DEVIATIONS AS MAY OCCUR OR BE NECESSARY IN CONSTRUCTION. MINOR DETAILS NOT SHOWN.

- BATTERY CHARGER LOCATED IN COMPARTMENT LS3
- BATTERY CHARGE INDICATOR LOCATED ON DRIVER'S SEAT RISER
- DUAL L.E.D. LIGHT STRIPS LOCATED IN HOSE BED
- DRIP PAN GUARD FOR ALL ROLL-UP DOORS
- ONE FULL WIDTH/DEPTH ADJUSTABLE SHELF IN COMPARTMENTS B1; TWO IN LS1, RS1, RS3
- ONE FLOOR MOUNTED SLIDE-OUT TRAY IN COMPARTMENTS LS1, RS1
- SWING-OUT TOOL BOARD WITH PEGBOARD PATTERN IN COMPARTMENT RS2
- ALUMINUM PEGBOARD ON THE BACK WALL OF COMPARTMENTS LS2, LS3, RS2
- 5/SIL SCUFFPLATES AT CAB DOOR JAMBS

24JAN20	LME	CW1	CHASSIS
09DEC19	LME	CW1	DATA
18NOV19	KLE	CW1	MAKE
31OCT19	LME	CW1	PIERCE
27AUG19	LME	WKL	MODEL
REV	DATE	BY	CH

		JOB NO.	34259
		SCALE	DATE
TITLE	1500-D-770P, 750 WATER W/ 20 G FOAM, HOSE REEL, (2) HSH 152" SPCL DEPTH BODY, HYD LADDER RACK, (3) XLAYS	DRAWN BY	LME
FOR	NORTH COUNTY REGIONAL FIRE AUTHORITY STANWOOD, WASHINGTON	CHECKED BY	WKL
DWG NO.	34259AD	SHEET SIZE	D
		SHEET NO.	1 OF 1