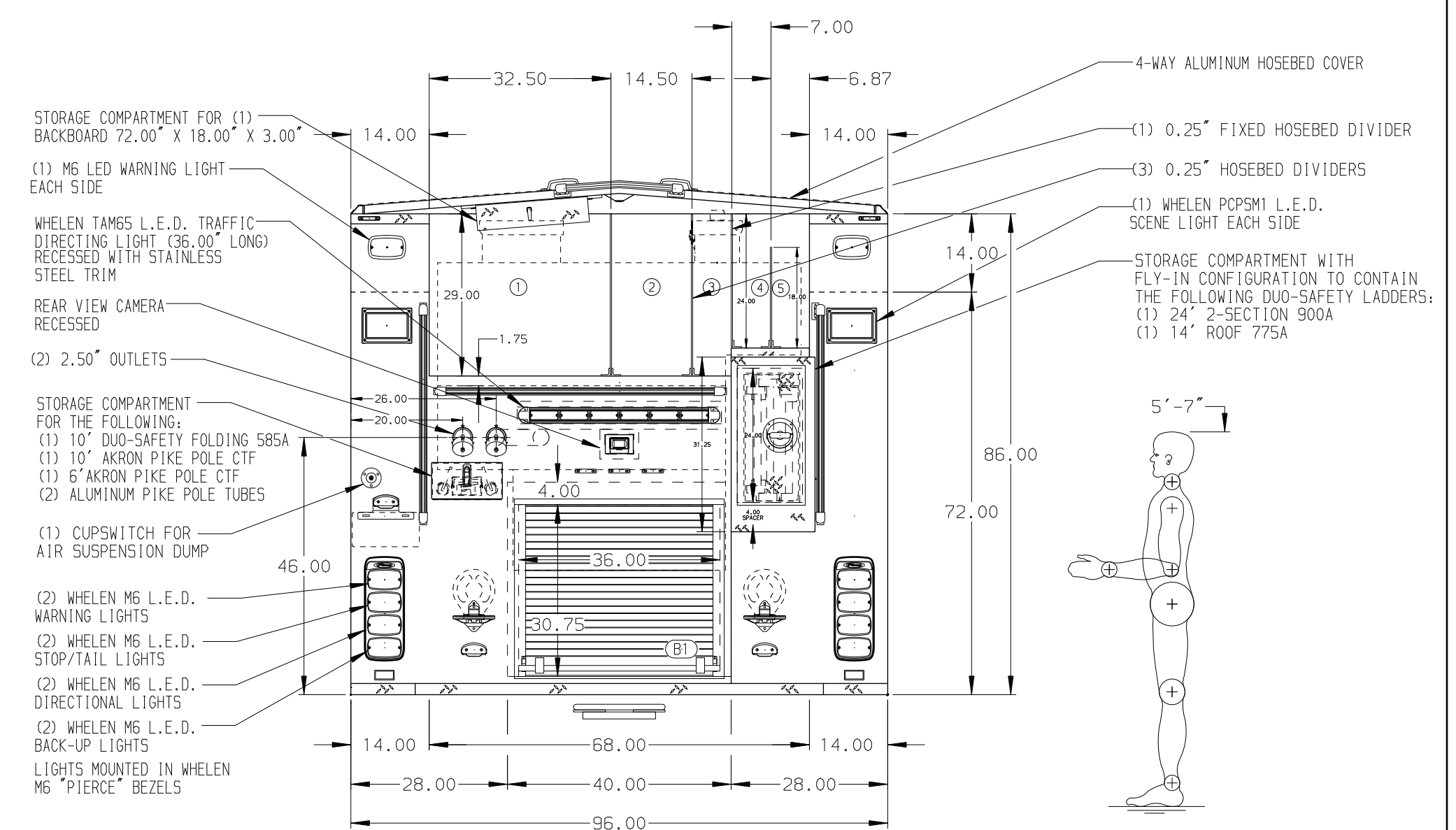



- | HOSEBED CAPACITIES | |
|--------------------|------------------------------|
| ① | 1000' OF 5.00" D.J.POLY HOSE |
| ② | 600' OF 2.50" D.J.POLY HOSE |
| ③ | 300' OF 1.75" D.J.POLY HOSE |
| ④ | 200' OF 3.00" D.J.POLY HOSE |
| ⑤ | 200' OF 3.00" D.J.POLY HOSE |



 MANUFACTURING INC.		JOB NO.	34278 (01-03)
		SCALE 1:24	DATE
TITLE	1500-D-700 WATER/25 FOAM, 145" (EXTENDED 140") BODY (1) CROSSLAY, (2) DEADLAYS, DELUGE	DRAWN BY MMF	27AUG19
FOR	SACRAMENTO METROPOLITAN FIRE DISTRICT MATHER, CALIFORNIA	CHECKED BY LPA	28AUG19
DWG NO.	34278AD	SHEET SIZE D	SHEET NO. 1 OF 1

NOTE
DIMENSIONS SHOWN ARE APPROXIMATE
AND ARE SUBJECT TO MINOR DEVIATIONS
AS MAY OCCUR OR BE NECESSARY IN
CONSTRUCTION.
MINOR DETAILS NOT SHOWN.

1. BATTERY CHARGE INDICATOR LOCATED ON DRIVER'S SEAT RISER
2. ONE FULL WIDTH/DEPTH ADJUSTABLE SHELF IN COMPARTMENTS RS2,B51,B1; TWO IN LS1,LS3, & RS1
3. PAC TRAC ON THE REAR WALL OF COMPARTMENT LS2
4. PARTITION BETWEEN COMPARTMENTS LS1/B1 AND RS1/B1
5. HORIZONTAL EQUIPMENT MOUNTING TRAYS IN COMPARTMENTS RS2
6. AIR OUTLET WITH SHUT OFF VALVE LOCATED ON DS PUMP PANEL
7. 5/8" SLIP SCUPPETS AT CAB DOOR JAMBS
8. BATTERY CHARGER LOCATED IN CAB EMS COMPARTMENT
9. AMOR DUAL LED LIGHT STRIPS LOCATED IN HOSE BED

	28JAN20	MMF	LPA	CHASSIS DATA
	14JAN20	MMF	LPA	
	11DEC19	MMF	LPA	MAKE
	22NOV19	MMF	LPA	PIERCE
	05NOV19	MMF	JJR	
REV	DATE	BY	CH	ENFORCER