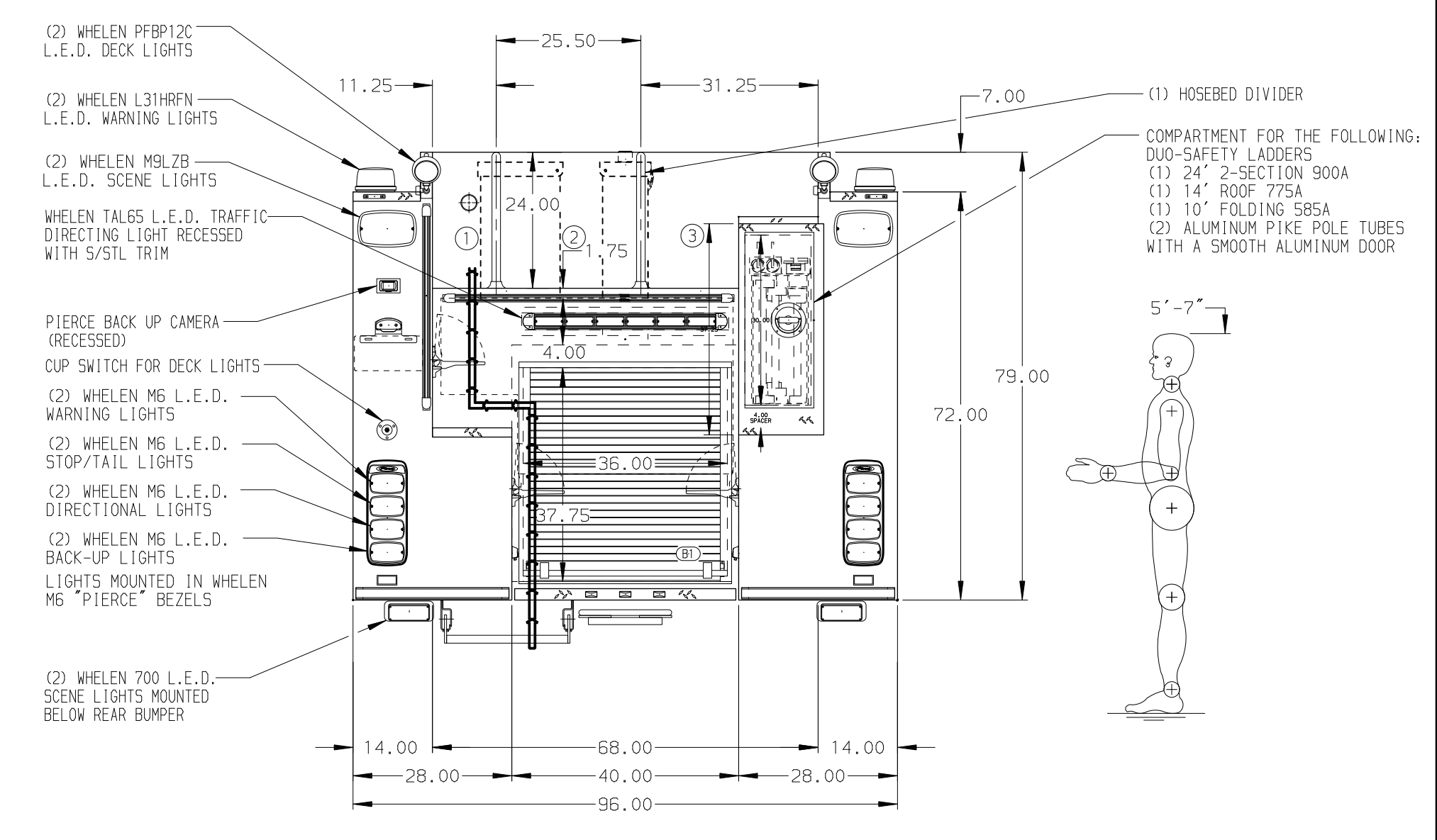
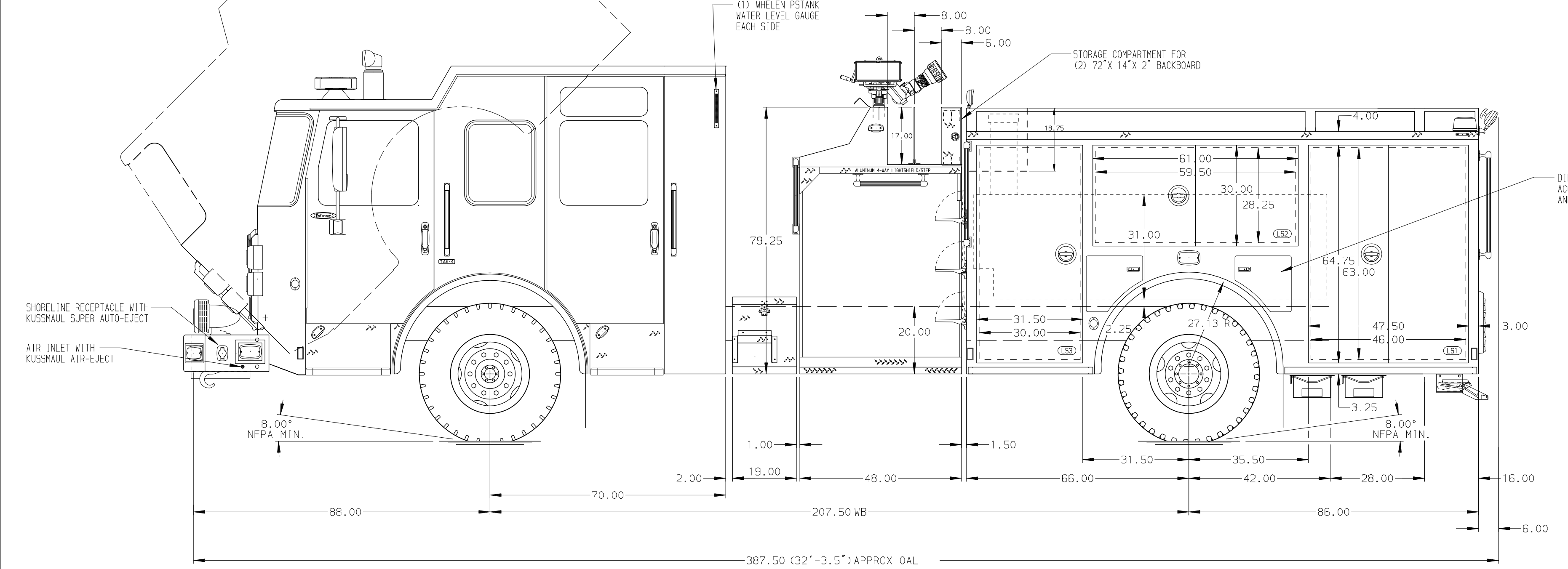


- HOSEBED CAPACITIES
- ① 500 OF 2.50" D.J. POLY HOSE
 - ② 800 OF 5.00" D.J. POLY HOSE
 - ③ 700 OF 3.00" D.J. POLY HOSE



ALUMINUM BODY

SIDE ROLL AND FRONTAL IMPACT PROTECTION

NOTE
DIMENSIONS SHOWN ARE APPROXIMATE AND ARE SUBJECT TO MINOR DEVIATIONS AS MAY OCCUR OR BE NECESSARY IN CONSTRUCTION. MINOR DETAILS NOT SHOWN.

- 1. BATTERY CHARGER/COMPRESSOR LOCATED IN COMPARTMENT L53
- 2. BATTERY CHARGE INDICATOR LOCATED ON DRIVER'S SEAT RISER
- 3. ONE FULL WIDTH/DEPTH ADJUSTABLE SHELF IN COMPARTMENTS L51, L53, R51, R53; TWO IN B1
- 4. ALUMINUM REEBOARD ON THE BACK WALL OF COMPARTMENTS L52, L53, R52
- 5. ONE 120V DUPLEX RECEPTACLE LOCATED IN COMPARTMENTS L51, L53, R51

REV	DATE	BY	CH	ENFORCER
19NOV19		MWA	PPE	MAKE
30OCT19		LME	PPE	PIERCE
12SEP19		JWO	WKL	MODEL

		JOB NO.	34306
		SCALE	DATE
CHASSIS DATA TITLE: 1500-D-530P, 500G WATER W/30G FOAM CELL, 152" BODY FOLDER, (2) XLAYS, DELUGE, LADDERS BTWN TANK & SS FOR: RIDGELAND FIRE DEPARTMENT RIDGELAND, MISSISSIPPI	DRAWN BY	LME	09SEP19
	CHECKED BY	WKL	09SEP19
DWG NO.	34306AD		SHEET NO.
			1 OF 1