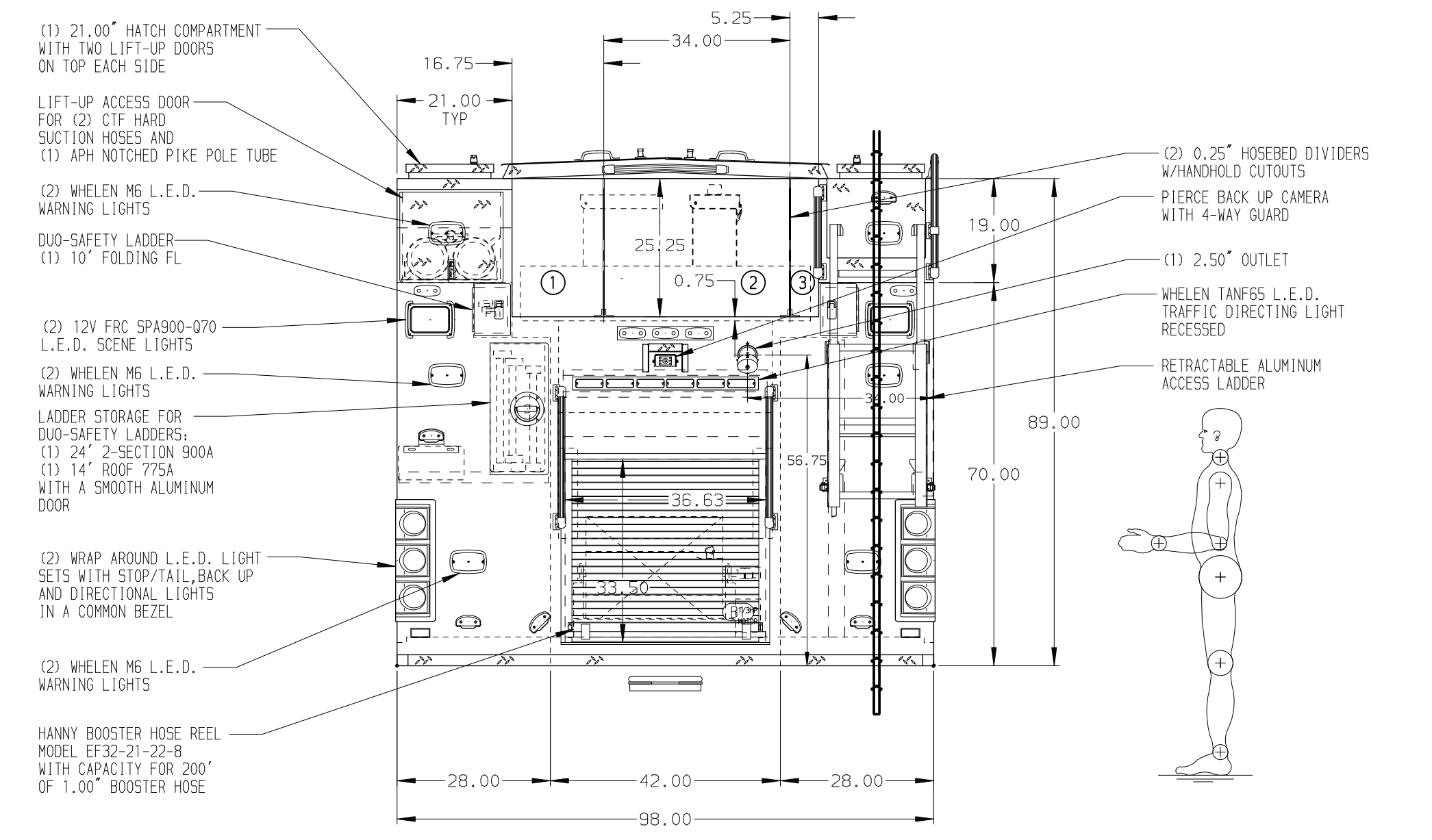
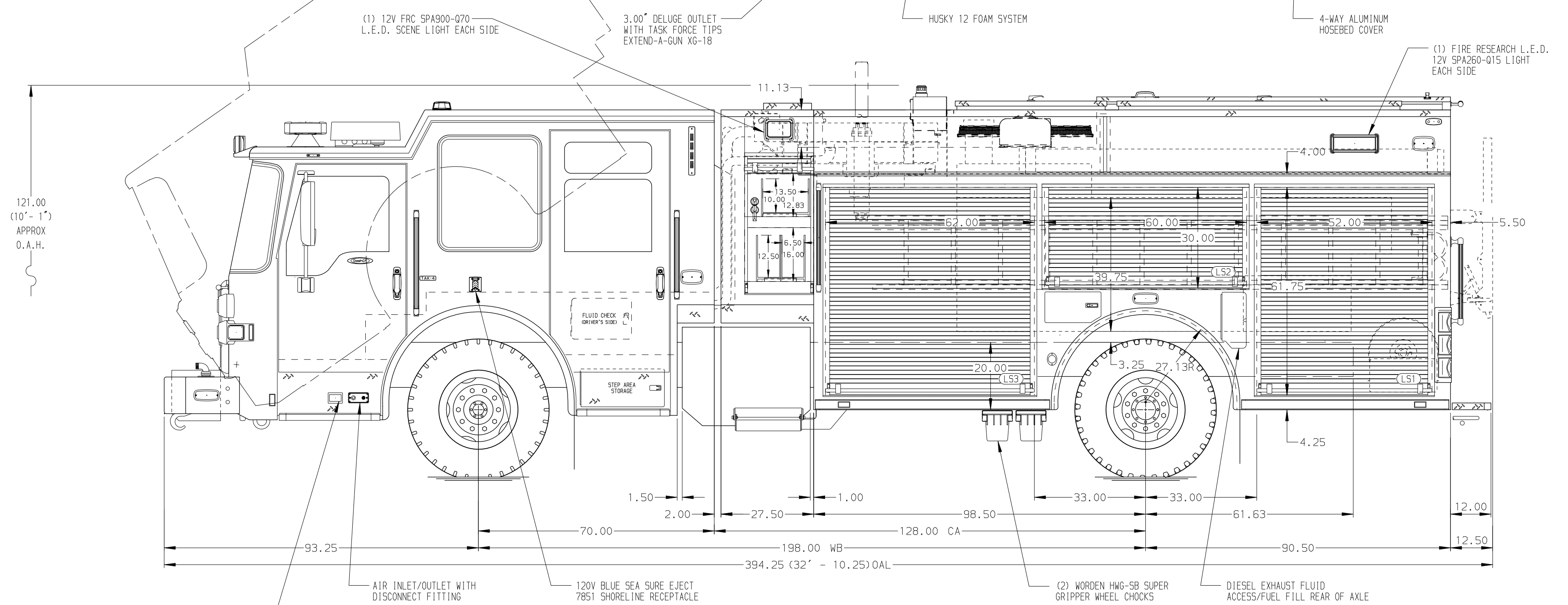


- HOSEBED CAPACITIES
- ① 800' OF 3.00" D.J. HOSE
  - ② 1000' OF 5.00" D.J. HOSE
  - ③ 200' OF 2.50" D.J. HOSE



ALUMINUM BODY

SIDE ROLL & FRONTAL IMPACT PROTECTION

**NOTE**  
DIMENSIONS SHOWN ARE APPROXIMATE AND ARE SUBJECT TO MINOR DEVIATIONS AS MAY OCCUR OR BE NECESSARY IN CONSTRUCTION. MINOR DETAILS NOT SHOWN.

1. KUSSMAUL AIR COMPRESSOR LOCATED BEHIND OFFICER'S SEAT
2. ONE FULL WIDTH/DEPTH ADJUSTABLE SHELF IN COMPARTMENT L53 & R53, TWO IN L51 & R51
3. ONE ADJUSTABLE TILTING SLIDE-OUT TRAY IN COMPARTMENT R53
4. ONE FULL WIDTH/DEPTH FLOOR MOUNTED SLIDE-OUT TRAY IN COMPARTMENT R51 & R53
5. ONE ADJUSTABLE TOOL BOARD MOUNTED TO SLIDE-OUT TRAY IN COMPARTMENT R53
6. ONE SWING-OUT ALUMINUM TOOL BOARD IN COMPARTMENT L52 & R52
7. STORAGE FOR LITTLE GIANT REVOLUTION XE 12017-MODEL T7 LADDER IN COMPARTMENT R53
8. RETENTION NETTING LOCATED IN COMPARTMENT R51
9. BOLT-IN PARTITION LOCATED BETWEEN COMPARTMENTS L51/R51 & R51/B1
10. REMOVABLE SHELF IN LEFT SIDE HATCH COMPARTMENT 10" FROM BOTTOM
11. DRAWER ASSEMBLY LOCATED IN COMPARTMENT L53
12. TWO ALUMINUM STORAGE TUBES LOCATED IN COMPARTMENT B1

REV	DATE	BY	CH	DASH CF
1	12FEB20	AMI	DTS	CHASSIS DATA
2	12FEB20	AMI	DTS	MAKE
3	10JAN20	AMI	DTS	PIERCE
4	06NOV19	AMI	WKL	MODEL

		JOB NO.	34469
		SCALE	1:24
<b>TITLE</b> 1500-D-750P W/20 GAL. FOAM CELL, 189" FH & FD PUC (3) CROSSLAYS, LADDERS THRU BODY, DELUGE	<b>FOR</b> WEATHERFORD FIRE DEPARTMENT WEATHERFORD, TEXAS	DRAWN BY	AMI
		CHECKED BY	WKL
<b>DWG NO.</b> 34469AD	<b>DATE</b> 	SHEET SIZE	D
		SHEET NO.	1 OF 1