

ALUMINUM BODY


NOTE
DIMENSIONS SHOWN ARE APPROXIMATE AND ARE SUBJECT TO MINOR DEVIATIONS AS MAY OCCUR OR BE NECESSARY IN CONSTRUCTION.
MINOR DETAILS NOT SHOWN.

1. INSTA-CHAIN AUTOMATIC TIRE CHAINS TO BE PROVIDED AT REAR
2. S/SIL SCUFFPLATE ON EACH CAB DOOR JAMB
3. MOUNTING BASES FOR ANTENNAS LOCATED PER SHOP ORDER
4. BATTERY CHARGER LOCATED IN PUMP PLUMBING AREA
5. BATTERY CHARGE INDICATOR LOCATED ON D.S. PUMP PANEL
6. PERIMETER SCENE LIGHTS LOCATED PER SHOP ORDER
7. TWO AMOR DUAL L.E.D. STRIP LIGHTS LOCATED BELOW HOSEBED COVER
8. PIERCE L.E.D. DUAL COMPARTMENT LIGHT STRIPS LOCATED PER SHOP ORDER
9. THREE 120V 6-PLACE RECEPTACLES LOCATED IN THE CAB
10. NORCOLD NR751BB REFRIGERATOR WITH ADJACENT A/C AND D/C OUTLET LOCATED IN CABINET BEHIND D.S. SEAT

11. CIRCUIT BREAKER PANEL IN DRIVER SIDE FRONT BRASS COMPARTMENT
12. SUB FEED BREAKER BOX IN DRIVER SIDE FRONT BRASS COMPARTMENT
13. ONE AKRON ELECTRIC REWIND CORD REEL LOCATED IN HATCH ABOVE D1 WITH 200' OF 10/3 CABLE, AKRON JUNCTION BOX, AND ALUMINUM JUNCTION BOX HOLDER
14. MOUNTING PROVISIONS FOR FUTURE HYDRAULIC REEL INSTALLATION LOCATED IN HATCH ABOVE D1
15. AIR INLET WITH DISCONNECT COUPLING LOCATED IN D.S. STEP WELL
16. KUSMAUL 12V AIR COMPRESSOR LOCATED PER SHOP ORDER
17. ALUMINUM TREADPLATE EXTERIOR REAR WALL OF CAB
18. ONE ADJUSTABLE FULL WIDTH/FULL DEPTH SHELF IN COMPARTMENT P2 & R1; TWO IN P1, P3 & P4; THREE IN D1
19. BLACK PIERCE POLYUREA COATING ON TOP AND BOTTOM OF BUMPER FLANGE

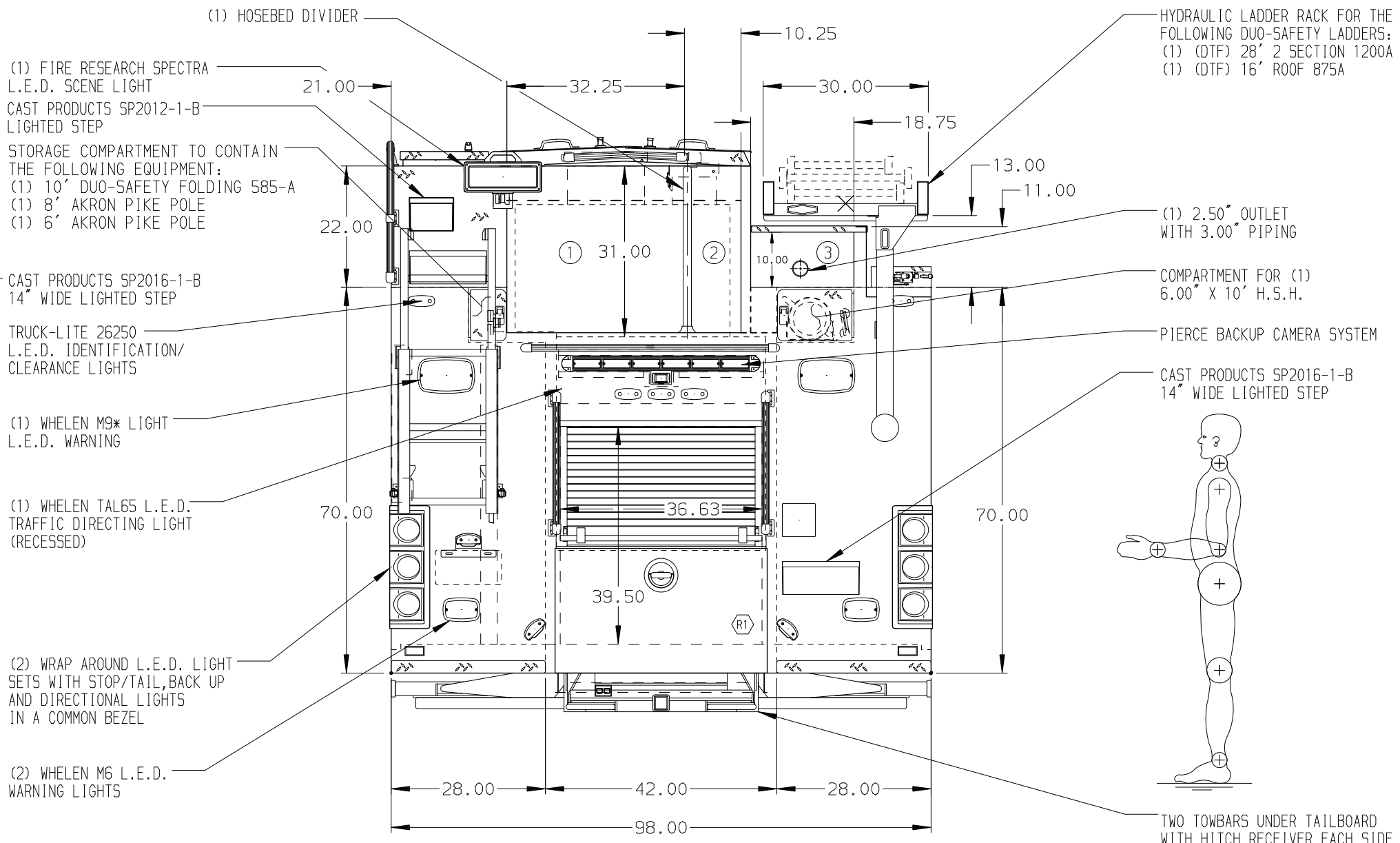
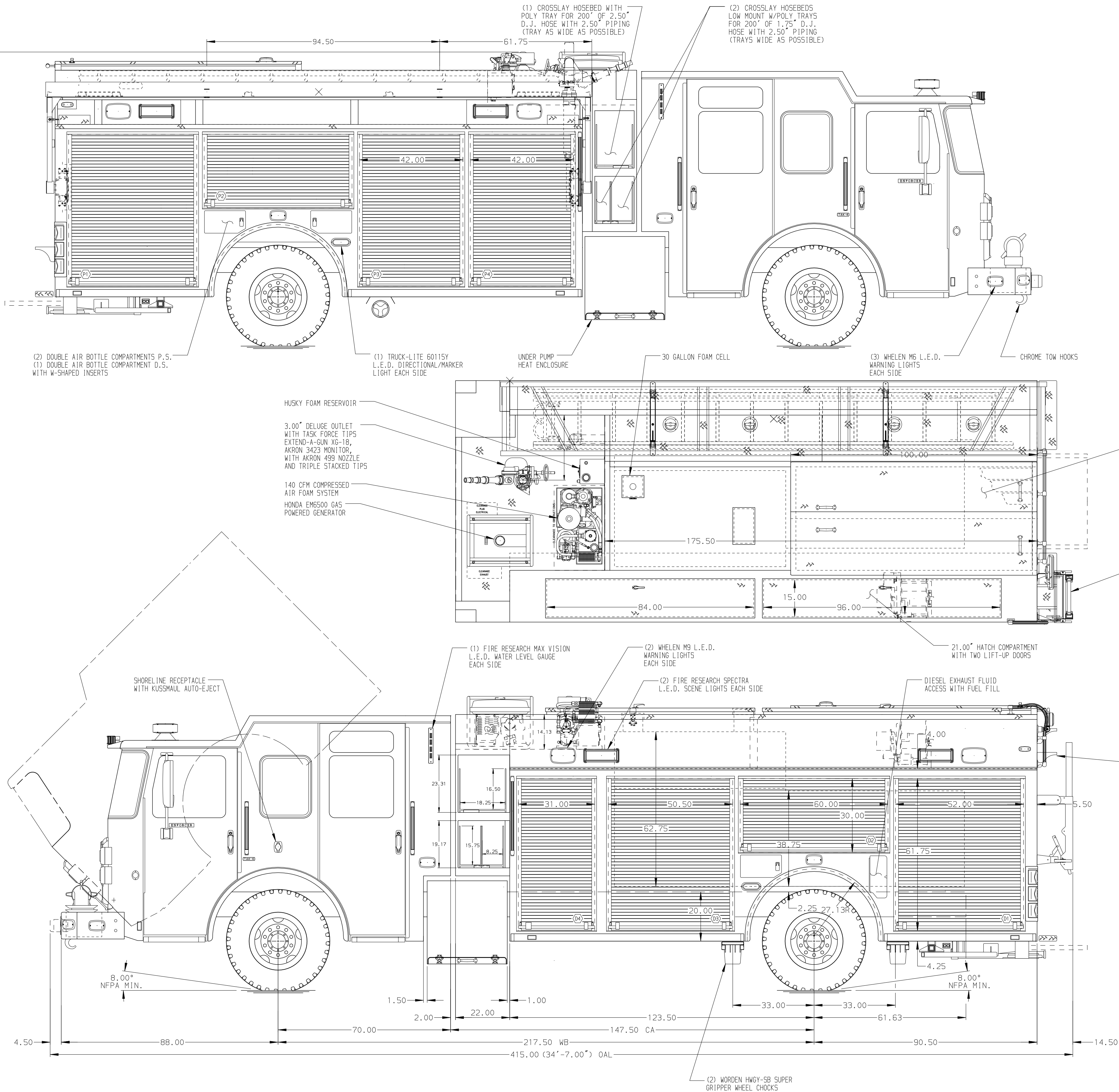
20. RUBBER FENDER CROWNS FRONT AND REAR
21. TWO PAINTED ADJUSTABLE TILTING SLIDE-OUT TRAYS IN COMPARTMENT D3
22. ONE FLOOR MOUNTED SLIDE-OUT TRAY WITH 4" SIDES IN COMPARTMENT P1
23. ONE FLOOR MOUNTED SLIDE-OUT TRAY IN COMPARTMENT D3, P1, P3 & P4; TWO IN D1
24. TWO SWING-OUT ALUMINUM TOOL BOARDS IN COMPARTMENT D2
25. ALUMINUM TOOLBOARD MOUNTED TO SLIDE-OUT TRAY IN COMPARTMENT D1
26. ONE VERTICAL BOLT-IN PARTITION BETWEEN COMPARTMENTS D1-R1
27. ONE VERTICAL PARTITION (SPECIAL HEIGHT) IN COMPARTMENT P1
28. ONE VERTICAL PEG BOARD PARTITION IN COMPARTMENT D1
29. ALUMINUM PEGBOARD WITH TRACKS ON THE REAR WALL OF COMPARTMENT D2

REV	DATE	BY	CH	ENFORCER
▽	20JUL15	DDO	COR	MAKE
▽	15JUN15	DDO	COR	PIERCE
▽	23APR15	DDO	KBO	MODEL

 MANUFACTURING INC.		JOB NO.	28819
		SCALE	1:24
		DATE	
		DRAWN BY	DDO
		CHECKED BY	KBO
		SHEET SIZE	D
		SHEET NO.	1 of 1

TITLE 1500-D-1000 W/30 GAL FOAM CELL, 214" PUC RESCUE BODY
FOR (3) X-LAYS, GENERATOR, DELUGE, REELS IN HATCH
TOWN OF BELOIT FIRE DEPARTMENT
BELOIT, WISCONSIN

DWG NO. 28819AD



HOSEBED CAPACITIES
① 1000' OF 5.00" HOSE
② 600' OF 2.50" HOSE
③ 200' OF 1.75" HOSE