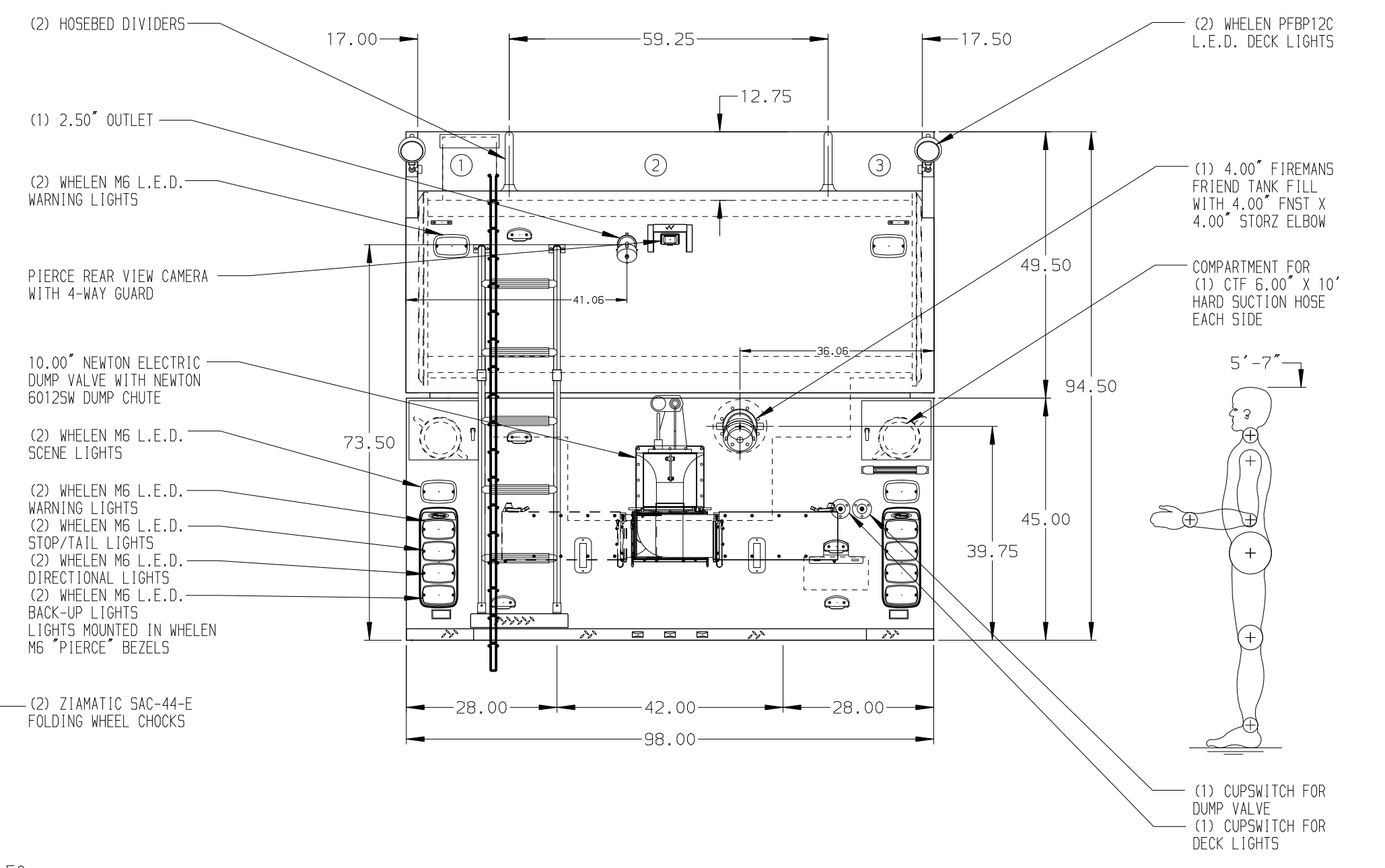
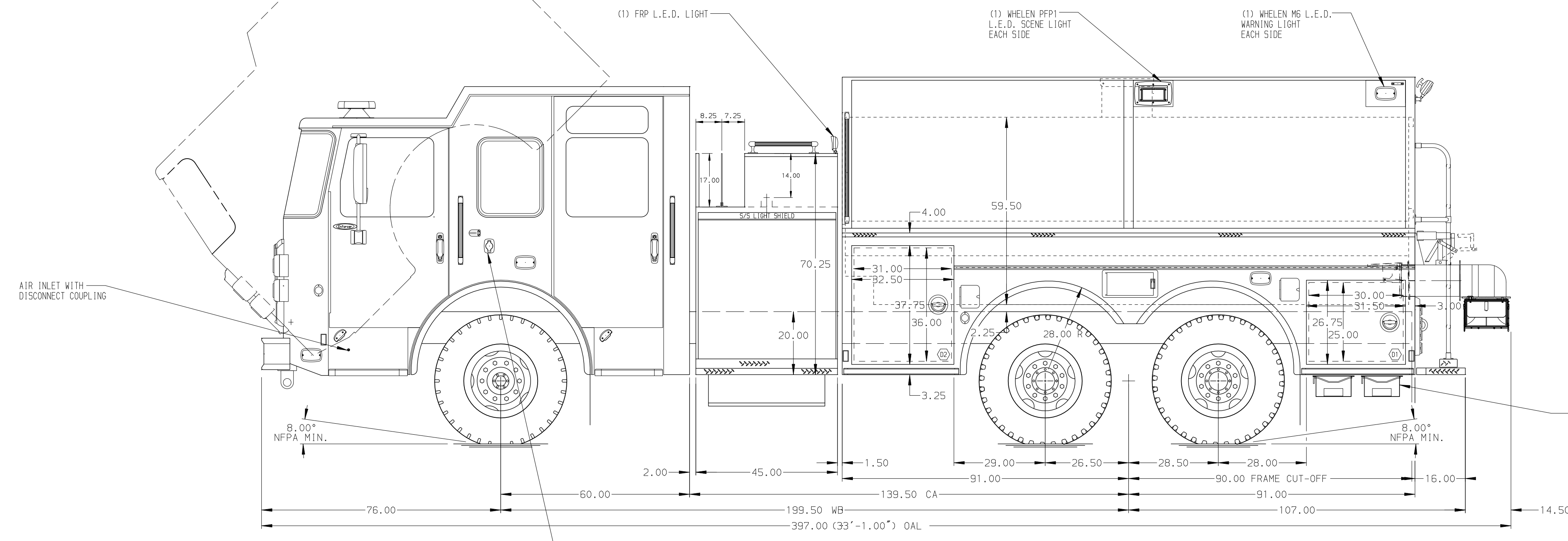


- HOSEBED CAPACITIES**
- ① OPEN AREA
  - ② 1200' OF 5.00" D.J. POLY HOSE
  - ③ 500' OF 3.00" D.J. POLY HOSE



ALUMINUM BODY

SIDE ROLL & FRONTAL IMPACT PROTECTION

**NOTE**  
DIMENSIONS SHOWN ARE APPROXIMATE AND ARE SUBJECT TO MINOR DEVIATIONS AS MAY OCCUR OR BE NECESSARY IN CONSTRUCTION. MINOR DETAILS NOT SHOWN.

- 1. ONSPOT AUTOMATIC TIRE CHAINS TO BE PROVIDED AT REAR
- 2. BATTERY CHARGER LOCATED BEHIND DRIVERS SEAT
- 3. BATTERY CHARGE INDICATOR LOCATED ON D.S. SEAT RISER
- 4. ONE ADJUSTABLE SHELF LOCATED IN COMPARTMENTS D2 & P2

REV	DATE	BY	CH	ENFORCER
170CT16	COL	MSA		
03AUG16	COL	MSA		

CHASSIS DATA	TITLE	1500-D-3000 GALLON POLY WATER TANK, 182" DRYSIDE
	FOR	(2)CROSSLAYS, DELUGE, REAR DUMP VALVE FAIRBANKS NORTH STAR BOROUGH FAIRBANKS, ALASKA
DWG NO.	30154AD	

**Pierce MANUFACTURING INC.**

JOB NO.	30154
SCALE	1:24
DATE	
DRAWN BY	COL
CHECKED BY	SMA
SHEET SIZE	
SHEET NO.	1 OF 1