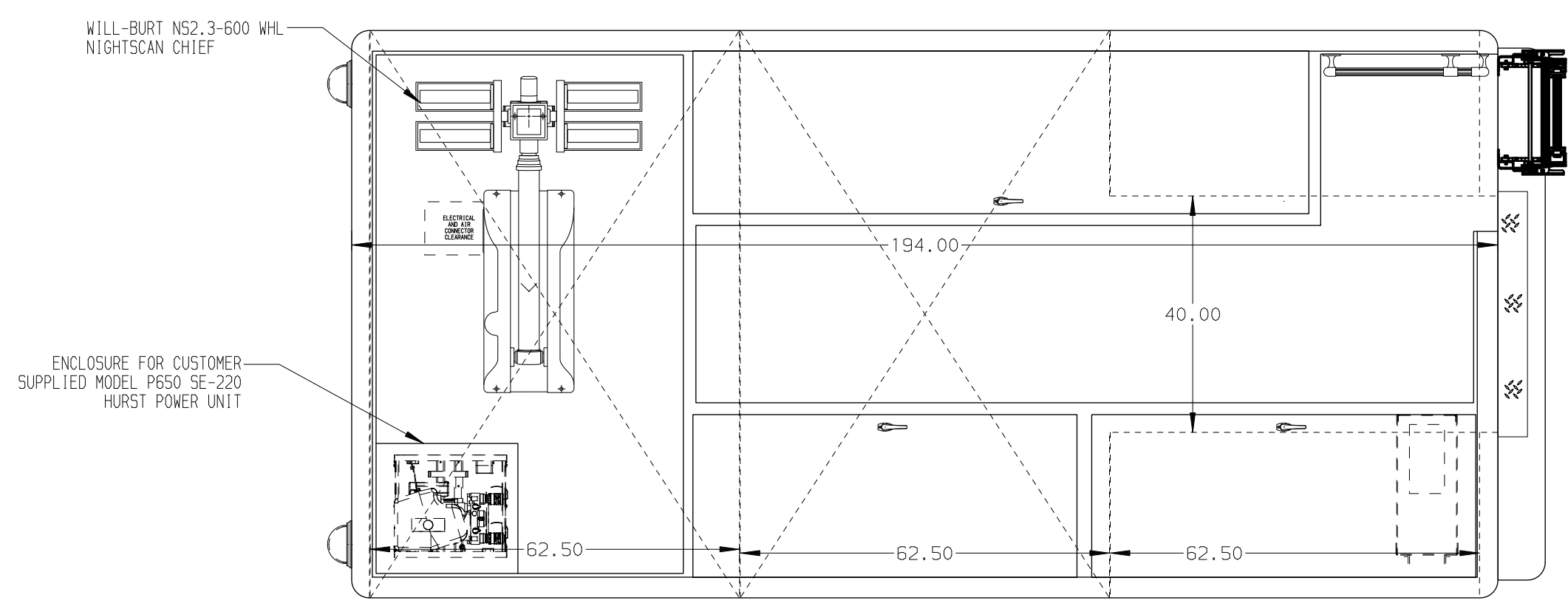
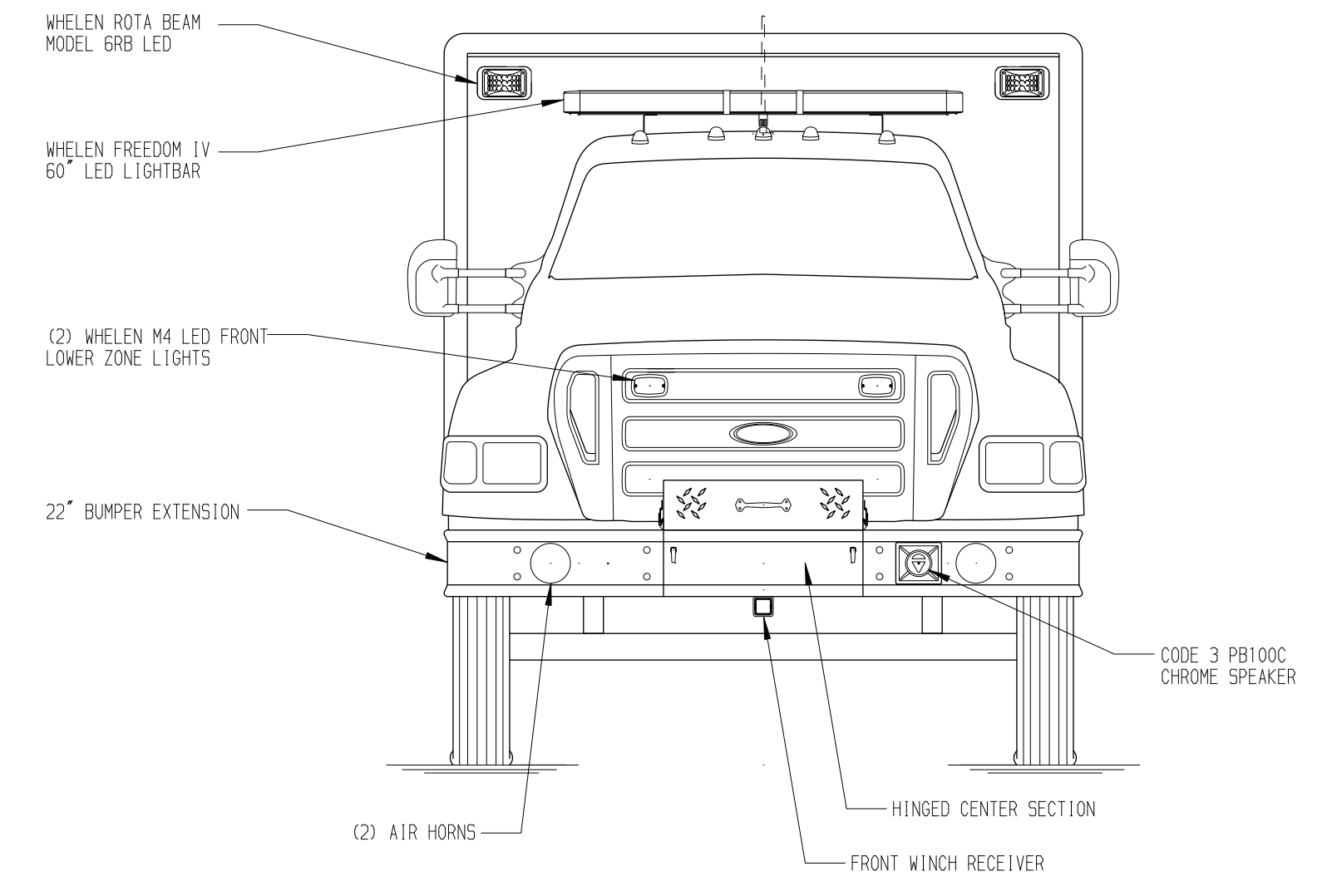
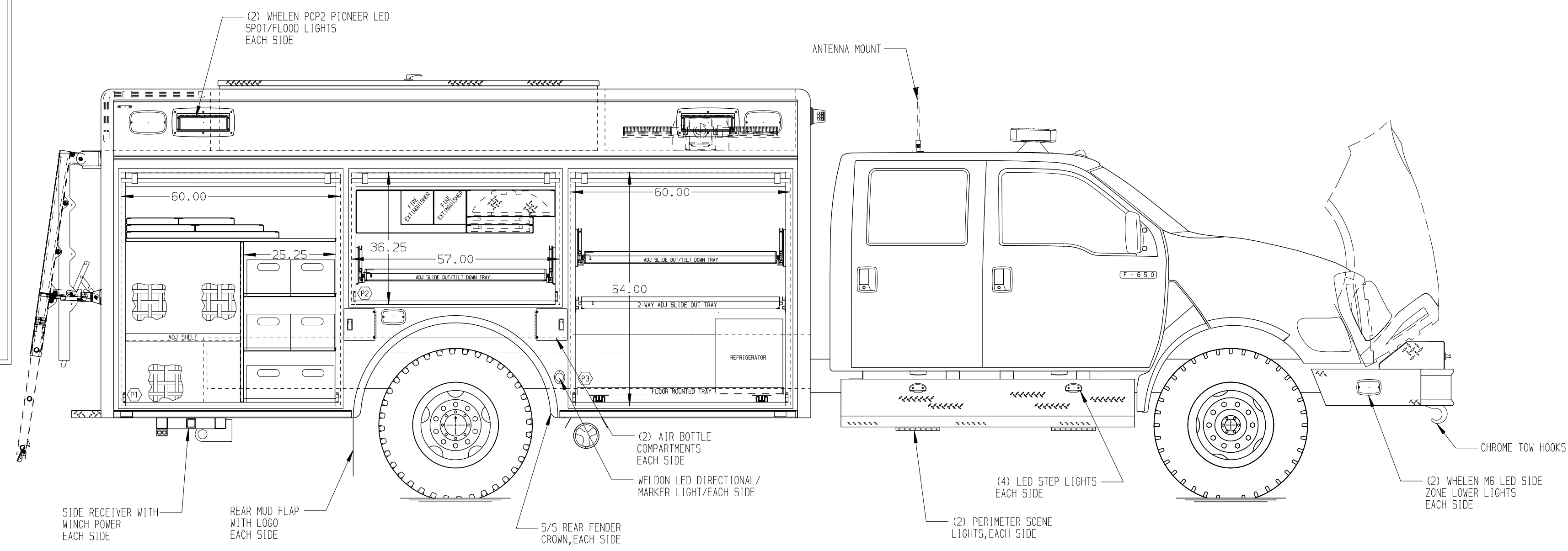
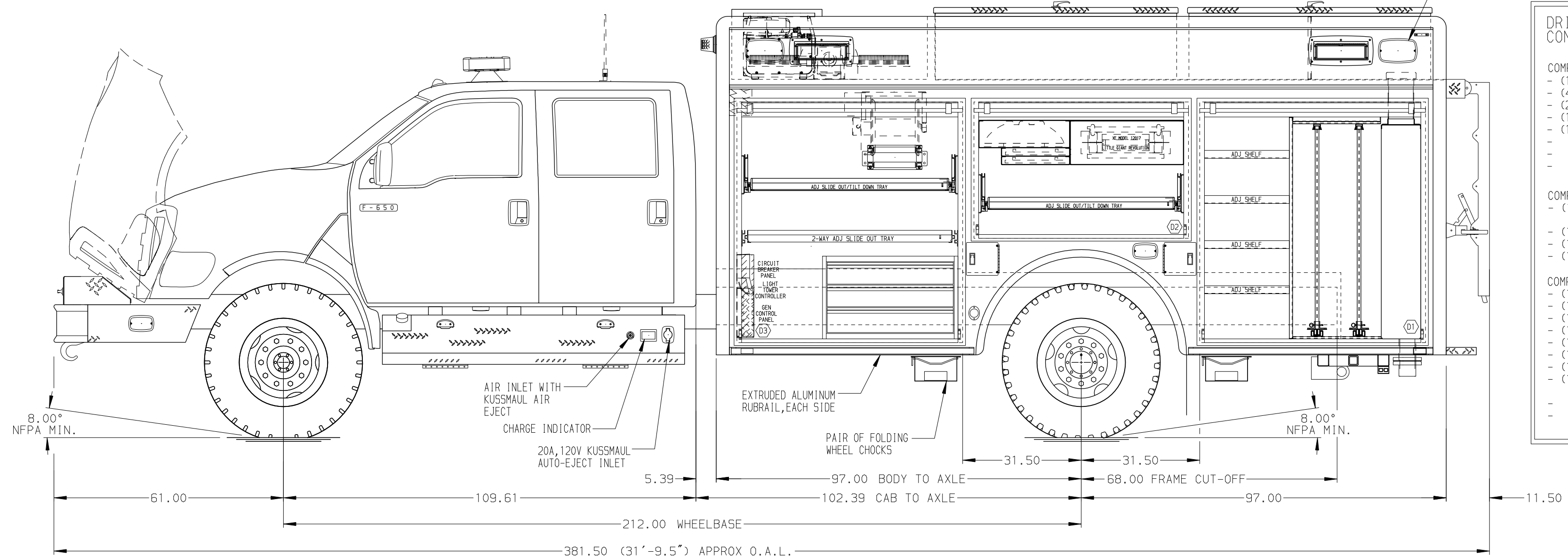


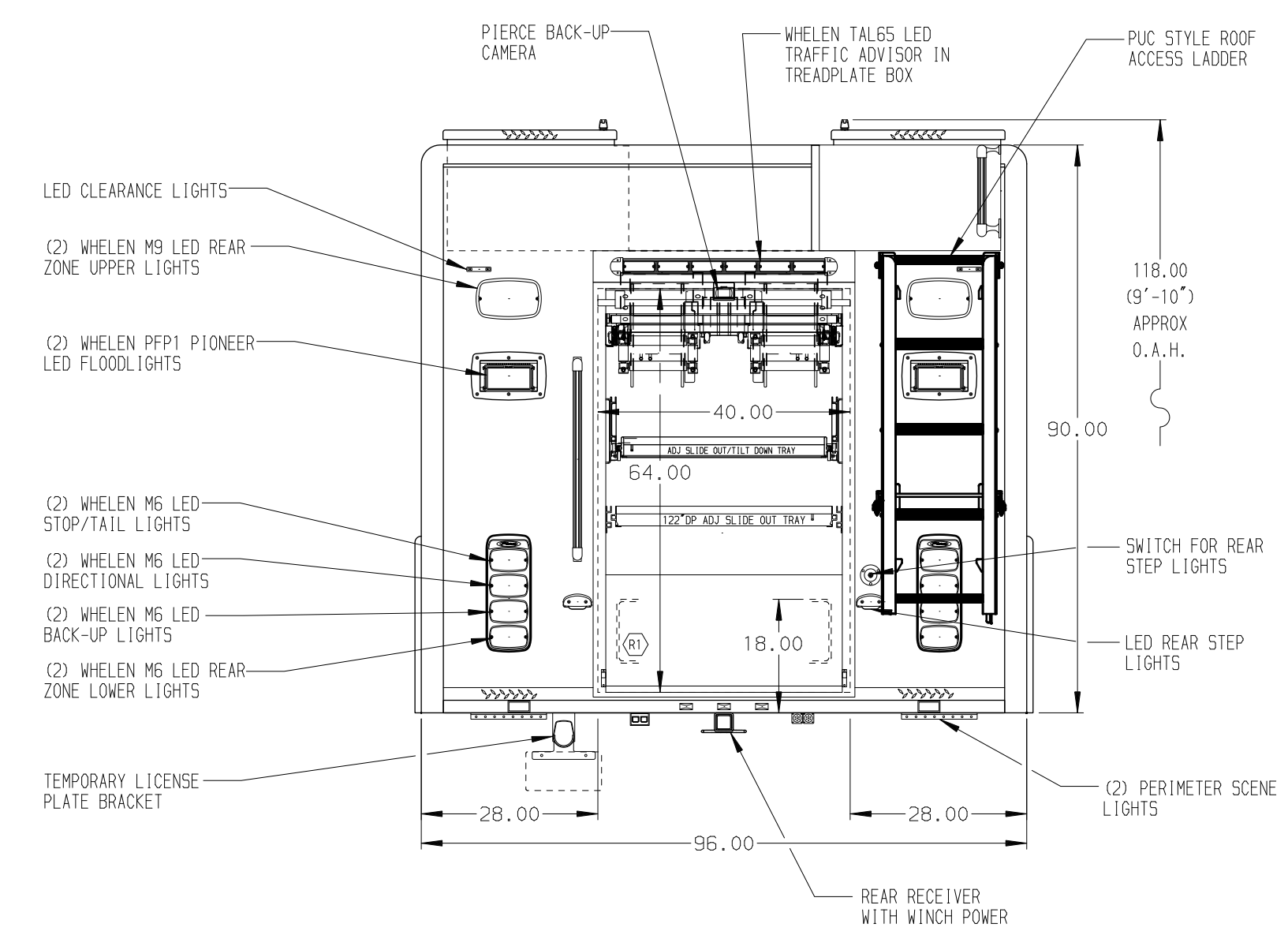
- PASSENGER'S SIDE COMPARTMENTS CONTAIN THE FOLLOWING:**
- COMPARTMENT P1 CONTAINS:**
- (1) RACK FOR 5 AIR BAGS
 - (1) STD DEPTH ADJ SHELF
 - (3) HORIZONTAL COMPARTMENT DIVIDERS
 - CARGO RETENTION NETTING
 - (5) POLY TOOL BOXES
 - (1) VERTICAL COMPARTMENT DIVIDER
- COMPARTMENT P2 CONTAINS:**
- (1) STOKES BASKET RACK
 - (1) RACK FOR 2 BACKBOARDS
 - (1) 1/2 DEPTH ADJ SLIDE OUT/TILT TRAY
 - (1) RACK FOR 2 EXTINGUISHERS
- COMPARTMENT P3 CONTAINS:**
- (1) 2-WAY ADJ SLIDE OUT TRAY
 - (1) 1/2 DEPTH ADJ SLIDE OUT/TILT TRAY
 - (1) FLOOR MOUNTED TRAY
 - (2) 20A, 120V DUPLEX RECEPTACLE



- REAR COMPARTMENT CONTAINS THE FOLLOWING:**
- COMPARTMENT R1 CONTAINS:**
- (1) FULL DEPTH ADJ SLIDE OUT/TILT TRAY
 - (1) 122" DP ADJ SLIDE OUT TRAY
 - (2) HYDRAULIC REELS WITH 100' OF HOSE WITH SLIDE OUT ROLLER GUIDE BRACKET
 - (1) SWITCH FOR 240V RECEPTACLE



- DRIVER'S SIDE COMPARTMENTS CONTAIN THE FOLLOWING:**
- COMPARTMENT D1 CONTAINS:**
- (1) DUAL PRO CHARGER
 - (4) STD DEPTH ADJ SHELVES
 - (2) STD DEPTH ADJ SLIDE OUT TOOLBOARDS
 - (1) OIL DRY HOPPER
 - (1) VERTICAL COMPARTMENT DIVIDER
- COMPARTMENT D2 CONTAINS:**
- (1) RACK FOR LITTLE GIANT OVERHAUL MODEL 17 LADDER
 - (1) STOKES BASKET RACK
 - (1) RACK FOR 2 BACKBOARDS
 - (1) 1/2 DEPTH ADJ SLIDE OUT/TILT TRAY
- COMPARTMENT D3 CONTAINS:**
- (1) 2-WAY ADJ SLIDE OUT TRAY
 - (1) 1/2 DEPTH ADJ SLIDE OUT/TILT TRAY
 - (1) 3-DRAWER C-TECH CABINET
 - (1) CIRCUIT BREAKER PANEL
 - (1) GENERATOR METER PANEL
 - (1) SUB FEED BOX
 - (1) LIGHT TOWER CONTROLLER
 - (1) AKRON CORD REEL WITH 200' OF 10/3 YELLOW CORD



NOTE
DIMENSIONS SHOWN ARE APPROXIMATE AND ARE SUBJECT TO MINOR DEVIATIONS AS MAY OCCUR OR BE NECESSARY IN CONSTRUCTION. MINOR DETAILS NOT SHOWN.

- NOTES:**
- WARN #10,000 PORTABLE WINCH WITH SYNTHETIC ROPE
 - PIERCE DUAL LED LIGHTS IN EACH BODY COMPARTMENT
 - ONAN 25kW SINGLE PHASE PTO DRIVEN GENERATOR WITH SPLASH GUARD LOCATED BETWEEN THE FRAME RAILS
 - 30A, 240V T.L. RECEPTACLE LOCATED IN HATCH COMPARTMENT ABOVE D1 FORWARD OF THE OIL DRY HOPPER

CLEAR DOOR WIDTH KEY		CHASSIS DATA
AMOR ROLL UP DOORS:	-1 7/8"	TITLE
CORTITE ROLL UP DOORS:	-2 3/4"	HEAVY DUTY RESCUE NON-WALKIN
PIERCE DOUBLE LIP DOORS:	-4 1/4"	FOR
PIERCE LIFT-UP LAP DOORS:	-1 1/2"	GRANITE FALLS FIRE DEPARTMENT GRANITE FALLS, MN
(EX: 60" F-F = 1 7/8" = 58 1/8" CLEAR)	(F-F) = FRAME TO FRAME	DWG NO.

		JOB NO.	29879
		SCALE	DATE
TITLE	HEAVY DUTY RESCUE NON-WALKIN	DRAWN BY	DHE
FOR	GRANITE FALLS FIRE DEPARTMENT GRANITE FALLS, MN	CHECKED BY	CDK
DWG NO.	29879AD	SHEET SIZE	SHEET NO.
			1 OF 1