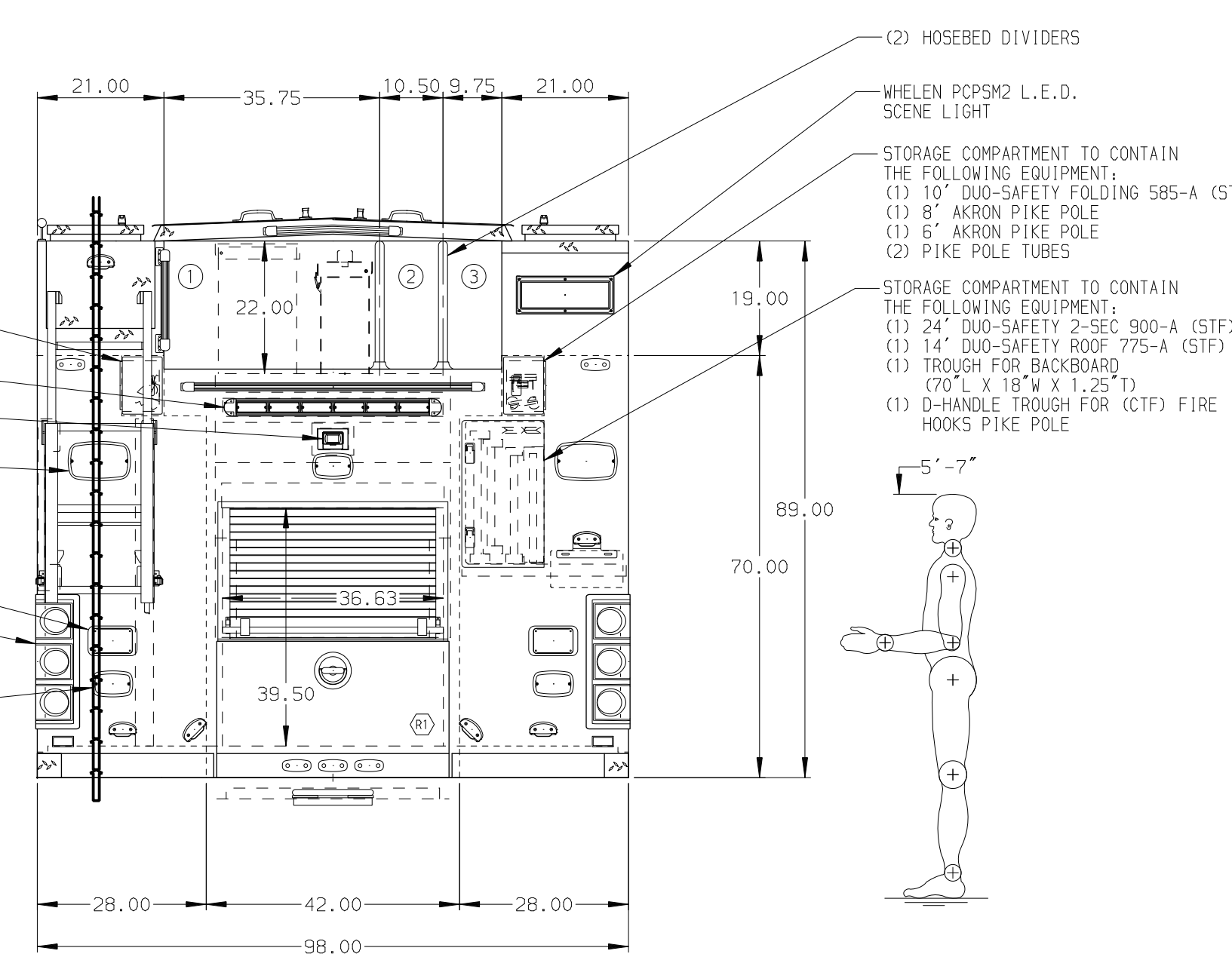
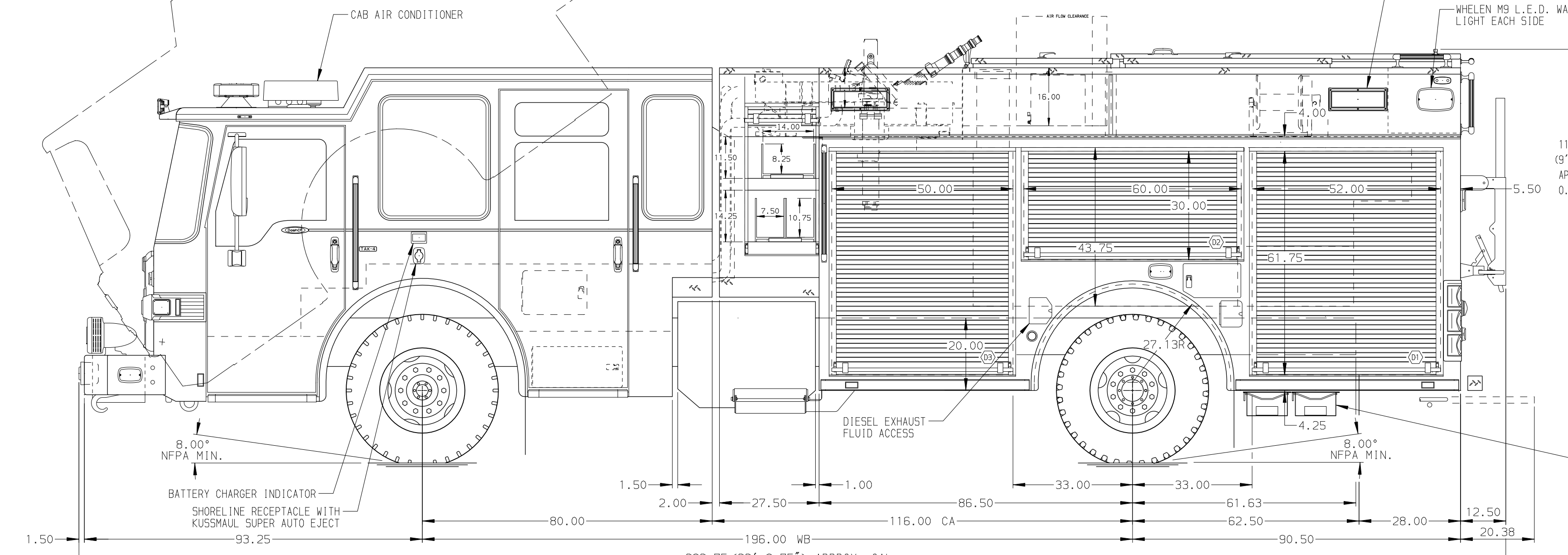


HOSEBED CAPACITIES

- ① 800' OF 5.00" D.J. POLY HOSE
- ② 400' OF 2.50" D.J. POLY HOSE
- ③ 400' OF 2.50" D.J. POLY HOSE



ALUMINUM BODY    MAXIMUM O.A.H. 117.00"    SIDE ROLL & FRONTAL IMPACT PROTECTION

**NOTE**  
DIMENSIONS SHOWN ARE APPROXIMATE AND ARE SUBJECT TO MINOR DEVIATIONS AS MAY OCCUR OR BE NECESSARY IN CONSTRUCTION. MINOR DETAILS NOT SHOWN.

1. AIR INLET WITH KUSSMAUL AIR EJECT LOCATED IN DRIVER SIDE STEP WELL
2. STEP AREA STORAGE COMPARTMENT IN DRIVER SIDE CREW CAB STEP WELL
3. BATTERY CHARGER LOCATED BEHIND DRIVER SEAT
4. CIRCUIT BREAKER PANEL IN COMPARTMENT-D3
5. SUB-FEED CIRCUIT BREAKER PANEL IN COMPARTMENT-D3
6. ADJUSTABLE SPECIAL SIDE HEIGHT SHELVES IN COMPARTMENT-D2,P2
7. FULL WIDTH/DEPTH ADJUSTABLE SHELVES IN COMPARTMENT-ONE IN P3,R1; TWO IN D1,D3; THREE IN P1
8. ADJUSTABLE SLIDE-OUT TRAY WITH 2" SIDES IN COMPARTMENT-D3
9. FLOOR MOUNTED SLIDE-OUT TRAY WITH 2" SIDES IN COMPARTMENT-D1
10. ALUMINUM SWING-OUT TOOLBOARD WITH REGBOARD PATTERN IN COMPARTMENT-D2

11. ROADPRO FAN FORCED CERAMIC HEATER WITH GUARD IN COMPARTMENT-P1
12. VERTICAL BOLT-IN PARTITION BETWEEN COMPARTMENTS D1/R1 AND P1/R1
13. ALUMINUM TOOLBOARD WITH TRACKS IN COMPARTMENT-P3
14. ONE AKRON ERWC-15-10 3-WIRE ELECTRIC REMIND CORD REEL WITH 200' OF 10/3 CABLE IN HATCH COMPARTMENT ABOVE D1
15. ONE DUPLEX RECEPTACLE IN COMPARTMENT-D1,P1,P3,R1

REV	DATE	BY	CH	DASH CF
20APR17	BST	PJP		CHASSIS DATA
25OCT16	BST	PJP		MAKE
22SEP16	BST	PJP		PIERCE
11AUG16	BST	CDU		MODEL

		JOB NO.	30205
		SCALE	1:24
<b>TITLE</b> 1500-D-650P W/30 GAL. FOAM CELL, DELUGE, GENERATOR 177" PUC RESCUE BODY, LADDERS THRU BODY, (3) X-LAYS		DRAWN BY	BST
		CHECKED BY	CDU
<b>FOR</b> LITTLETON FIRE RESCUE LITTLETON, CO		SHEET SIZE	D
		SHEET NO.	1 OF 1
<b>DWG NO.</b> 30205AD			