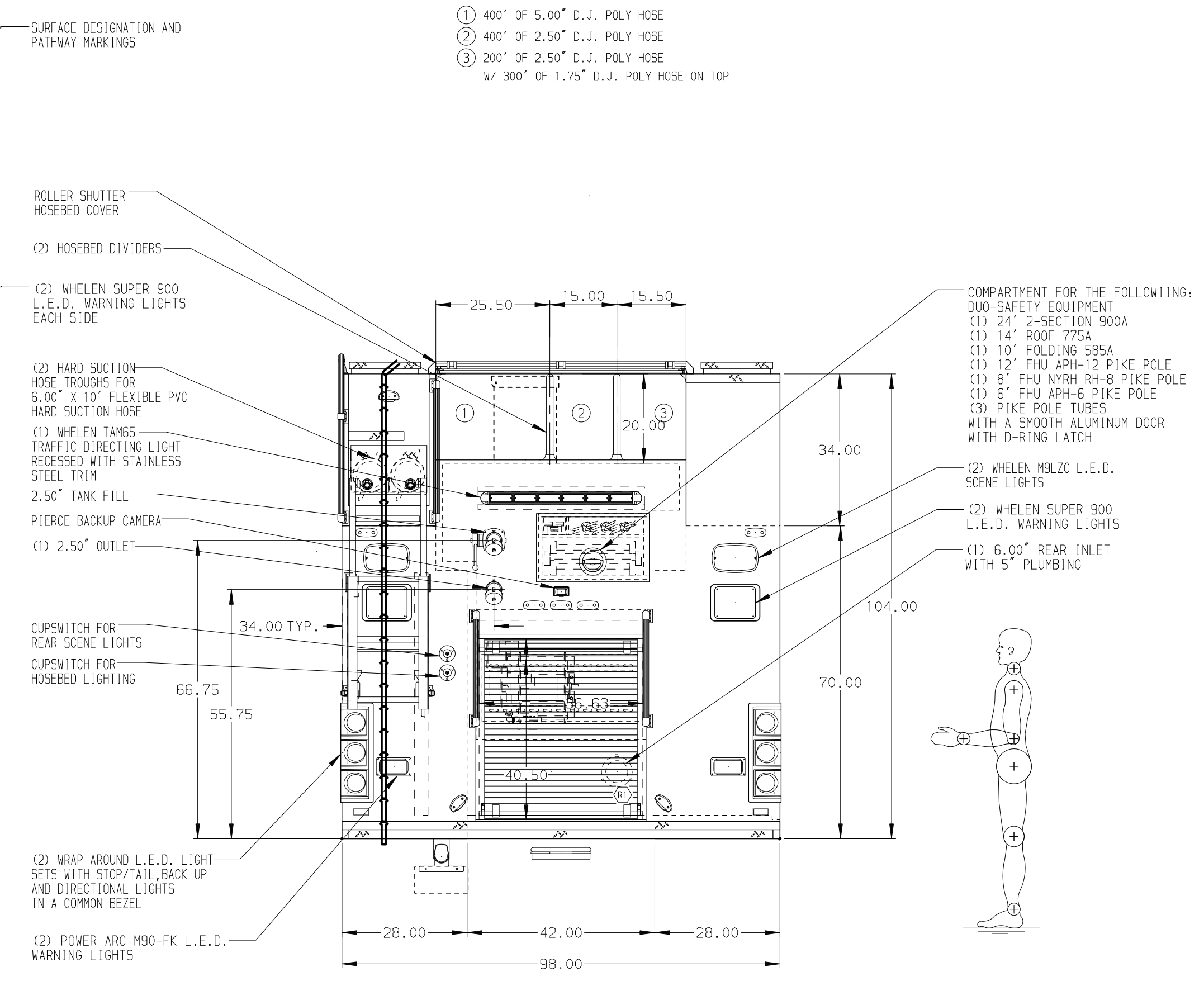
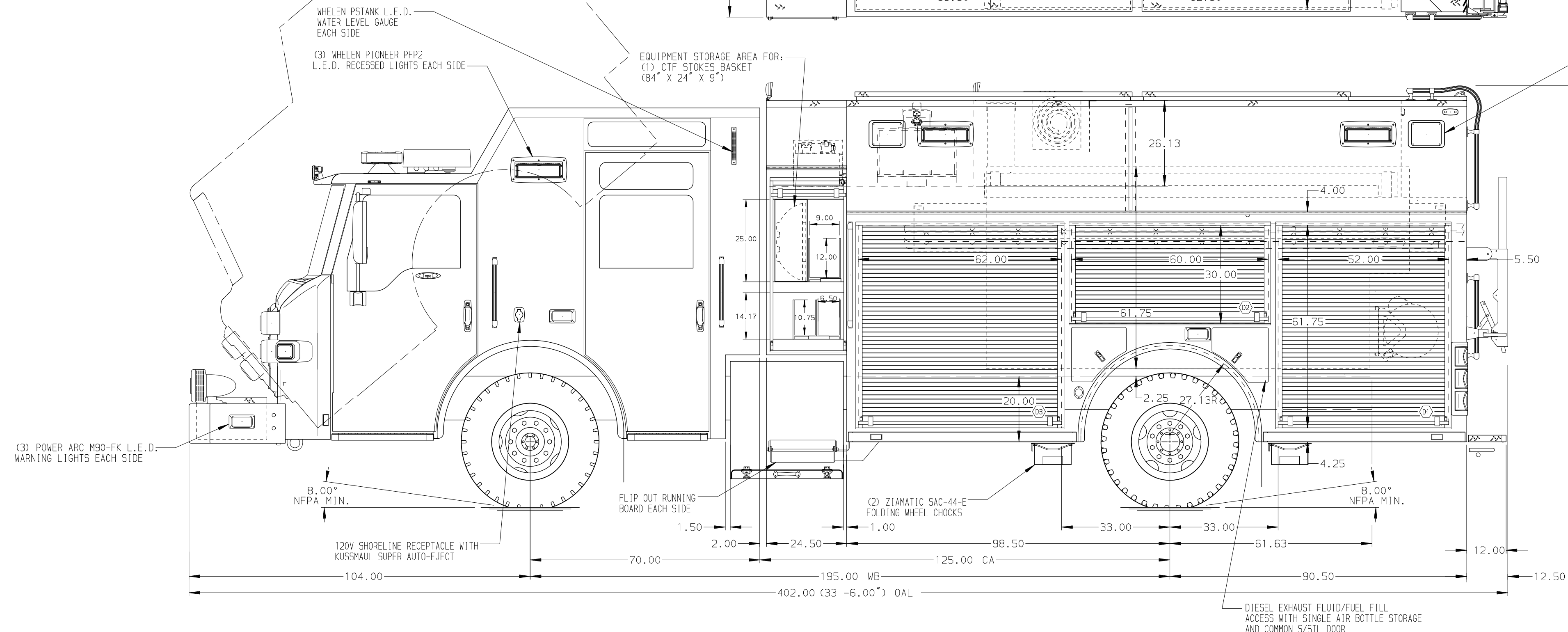


- HOSEBED CAPACITIES**
- ① 400' OF 5.00" D.J. POLY HOSE
 - ② 400' OF 2.50" D.J. POLY HOSE
 - ③ 200' OF 2.50" D.J. POLY HOSE W/ 300' OF 1.75" D.J. POLY HOSE ON TOP



STAINLESS STEEL BODY

NOTE
DIMENSIONS SHOWN ARE APPROXIMATE AND ARE SUBJECT TO MINOR DEVIATIONS AS MAY OCCUR OR BE NECESSARY IN CONSTRUCTION. MINOR DETAILS NOT SHOWN.

1. BATTERY CHARGER LOCATED IN D3
2. BATTERY CHARGER INDICATOR LOCATED NEAR D.S. SEAT RISER WITH BRACKET
3. DUAL L.E.D. LIGHT STRIPS LOCATED IN HOSE BED
4. PULL STRAPS FOR DOORS IN EACH CROSSLAY DOOR
5. ONE ADJUSTABLE FULL WIDTH / DEPTH SHELF IN P1, P2, AND P3
6. ONE ADJUSTABLE TILTING SLIDE-OUT TRAY IN P2
7. ONE FLOOR MOUNTED SLIDE-OUT TRAY IN R1 AND P1
8. ONE SWING-OUT ALUMINUM TOOL BOARD IN D2
9. THREE SLIDE-OUT TOOL BOARDS WITH PEGBOARD PATTERN IN D1
10. CTECH DRAWER ASSEMBLY IN P3
11. CTECH DRAWER ASSEMBLY IN D3
12. MODEL 17 LITTLE GIANT LADDER IN P2
13. OIL DRY HOPPER IN HATCH ABOVE COMPARTMENT P3
14. CIRCUIT BREAKER PANEL IN D3
15. ONE HANNAY ELECTRIC REWIND CORD REEL MODEL 1618-17-18 WITH 200' OF 10/3 CABLE IN R1
16. (1) 120V 6-PLACE RECEPTACLE STRIP BEHIND THE DRIVER'S SEAT
17. (1) 120V DUPLEX RECEPTACLE ON SHELF BETWEEN EMS CABINETS AND ONE ON TOP OF EACH EMS CABINET

		JOB NO.	30637
		SCALE	DATE
PIERCE		TITLE	1500-D-1030P, 1000 GAL OF WATER W/30 GAL FOAM CELL 189" PUC RESCUE, (3)X-LAYS, LADDERS THRU THE TANK.
		FOR	LORETTO VOLUNTEER FIRE DEPARTMENT INC. LORETTO, MINNESOTA
REV	DATE	BY	CH
13MAR17	LST	COR	MAKE
17FEB17	LST	JBO	PIERCE
08DEC16	LST	MGE	MODEL
			IMPEL
DWG NO.		30637AD	
SHEET SIZE		SHEET NO.	
D		1 OF 1	