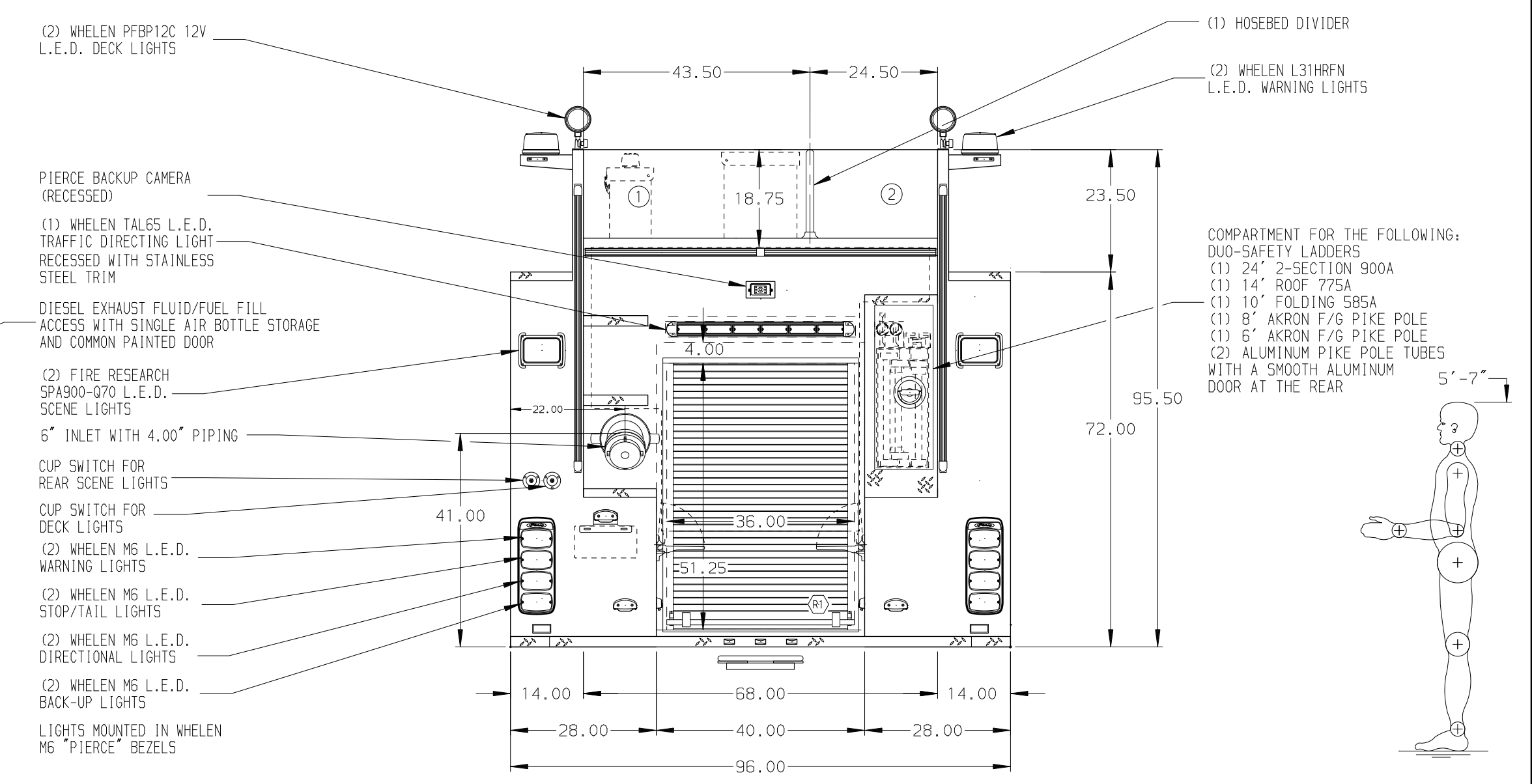
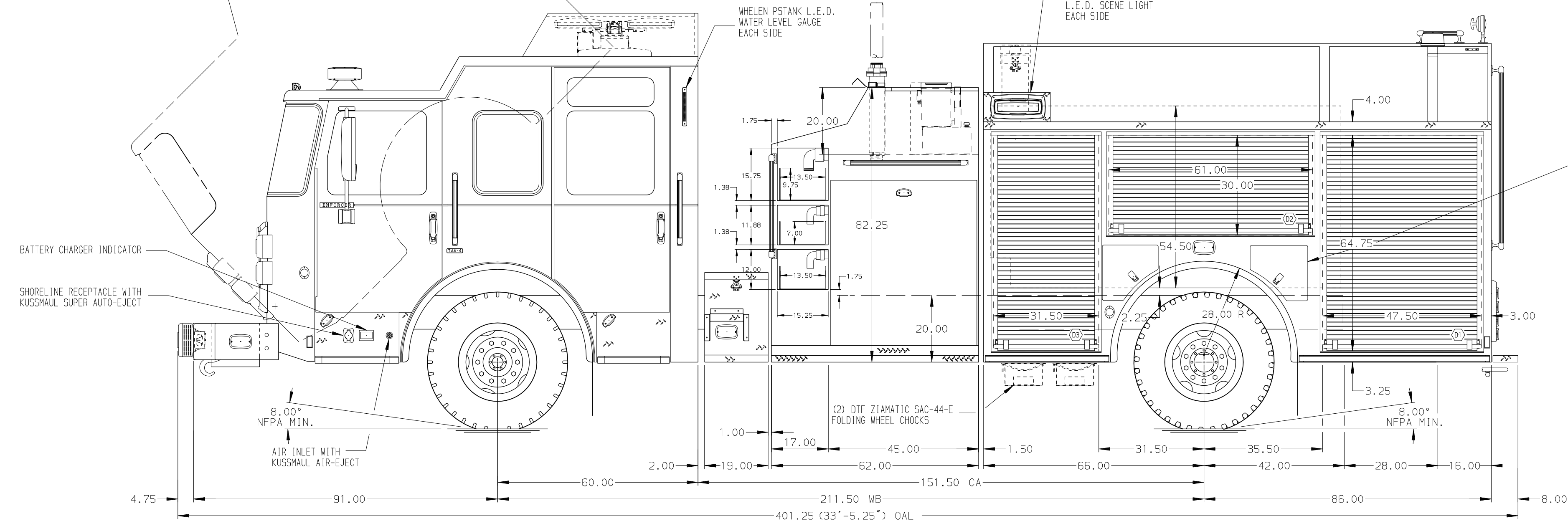


HOSEBED CAPACITIES

① 1000' OF 5.00" RUBBER HOSE

② 500' OF 3.00" D.J. POLY HOSE



ALUMINUM BODY

FRONTAL IMPACT PROTECTION

NOTE
DIMENSIONS SHOWN ARE APPROXIMATE AND ARE SUBJECT TO MINOR DEVIATIONS AS MAY OCCUR OR BE NECESSARY IN CONSTRUCTION. MINOR DETAILS NOT SHOWN.

- BATTERY CHARGER LOCATED IN COMPARTMENT D3
- ONE FULL WIDTH/DEPTH PAINTED ADJUSTABLE SHELF IN COMPARTMENT R1, TWO IN D1,D3,P1,P3
- ONE FLOOR MOUNTED SLIDE-OUT TRAY IN COMPARTMENT D1
- SWING-OUT TOOL BOARD WITH PEGBOARD PATTERN IN COMPARTMENT D2
- THREE ADJUSTABLE VERTICAL PARTITIONS IN COMPARTMENT P2
- GROVER TRAIN HORN MOUNTED BEHIND BUMPER

REV	DATE	BY	CH	ENFORCER
04APR16	JWO	JGO		
11MAR16	JWO	ANG		
22JAN16	JWO	KBO		

		JOB NO.	29710
		SCALE	DATE
CHASSIS DATA TITLE 1500-D-1000P, 152", FULL HEIGHT, FDLER D.S. & P.S. (3) SPD-LAYS, DELUGE, LIGHT TOWER FOR MILLBROOK FIRE DEPARTMENT MILLBROOK, ALABAMA	DRAWN BY	JWO	13JAN16
	CHECKED BY	KBO	14JAN16
DWG NO.	29710AD		SHEET NO.
			1 OF 1