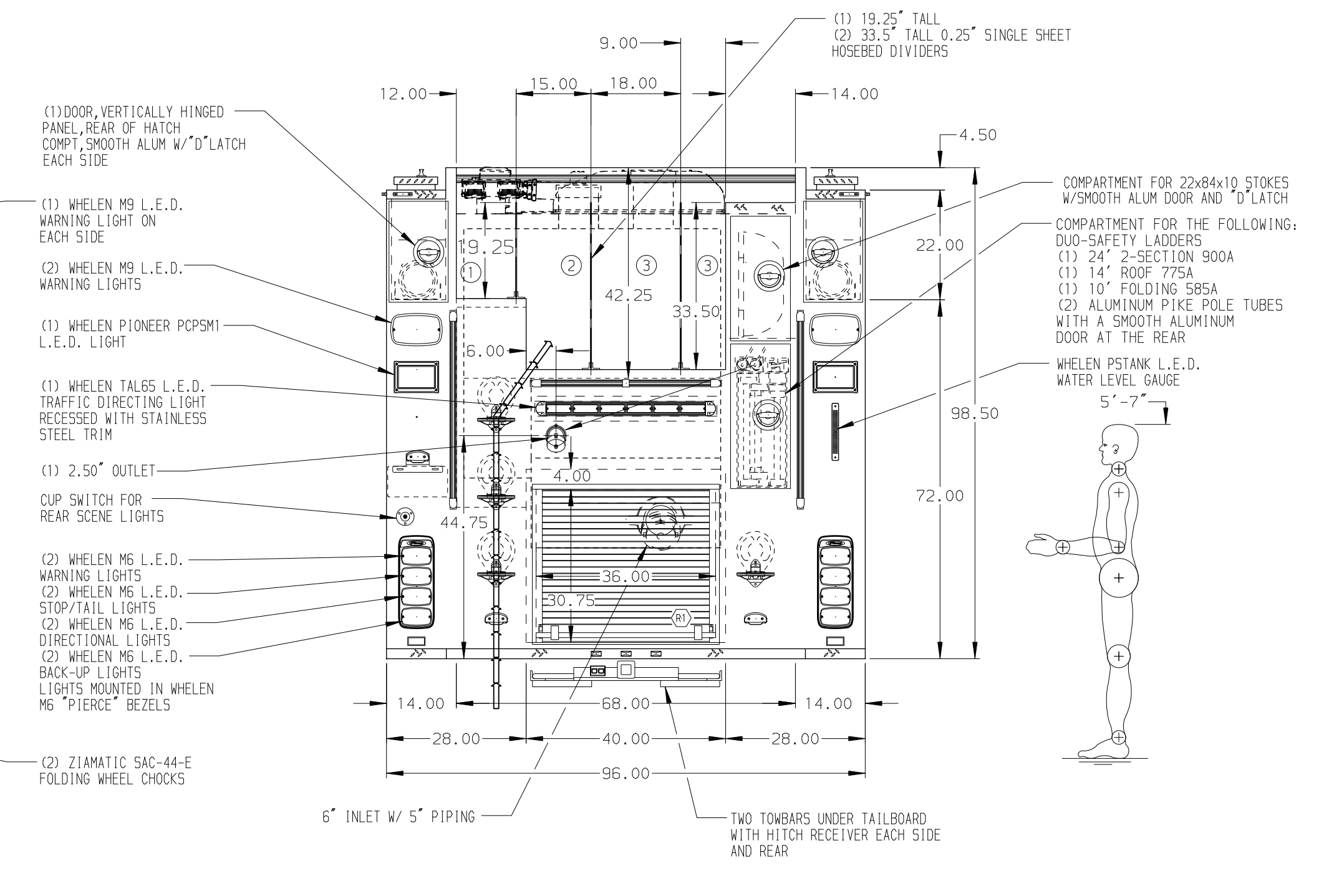


- HOSEBED CAPACITIES**
- ① - 350' OF 3.00" HOSE
 - ② - 650' OF 3.00" HOSE
 - ③ - 1000' OF 5.00" HOSE



ALUMINUM BODY

SIDE ROLL AND FRONTAL IMPACT PROTECTION

NOTE
DIMENSIONS SHOWN ARE APPROXIMATE AND ARE SUBJECT TO MINOR DEVIATIONS AS MAY OCCUR OR BE NECESSARY IN CONSTRUCTION. MINOR DETAILS NOT SHOWN.

REV	DATE	BY	CH	SABER FR
15FEB17	JLA	RW1		
22NOV16	JLA	DDR		
23SEP16	JAF	DDR		

		JOB NO.	30225
		SCALE	DATE
TITLE	1500-D-1100, 1000 WATER, 100 FOAM, 161" PUMPER, (3) XLAYS DELUGE, GENERATOR, EDUCTOR AKRON, REAR INLET	DRAWN BY	TES
FOR	MONTVALE VOLUNTEER FIRE DEPARTMENT MONTVALE, VIRGINIA	CHECKED BY	WKL
DWG NO.	30225AD	SHEET SIZE	SHEET NO.
		D	1 OF 1