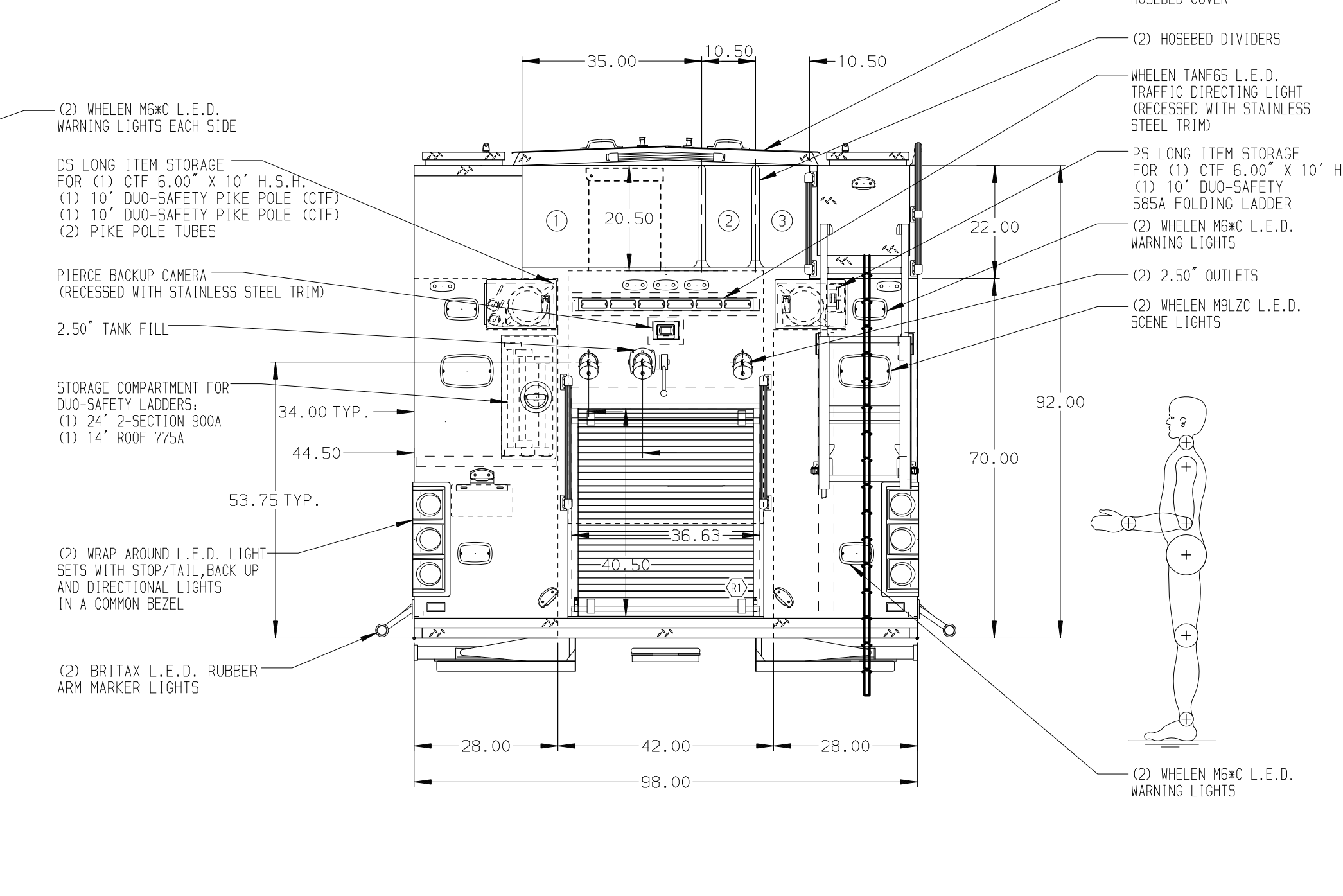
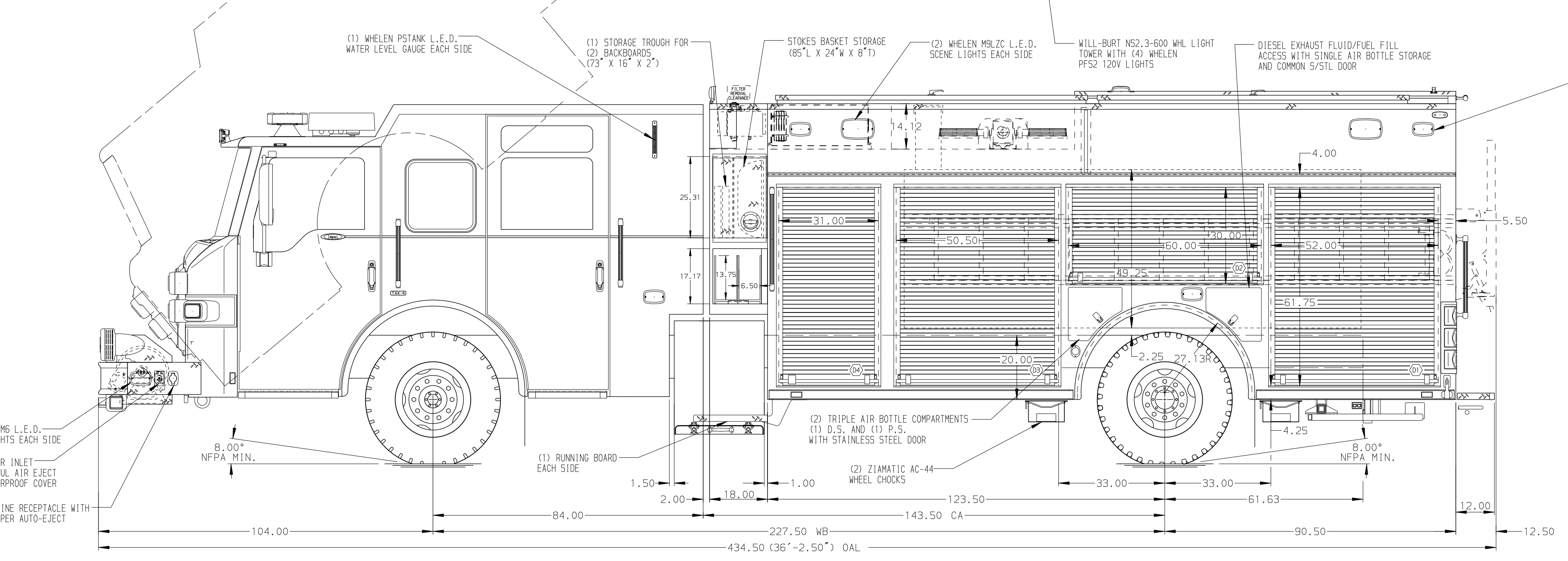


- HOSEBED CAPACITIES**
- ① 1000' OF 4.00\"/>



ALUMINUM BODY

MAXIMUM O.A.H. 122.00"

SIDE ROLL AND FRONTAL IMPACT PROTECTION

NOTE
DIMENSIONS SHOWN ARE APPROXIMATE AND ARE SUBJECT TO MINOR DEVIATIONS AS MAY OCCUR OR BE NECESSARY IN CONSTRUCTION. MINOR DETAILS NOT SHOWN.

1. INSTA-CHAIN AUTOMATIC TIRE CHAINS TO BE PROVIDED AT REAR
2. AIR OUTLET WITH MILTON STYLE FITTINGS ON THE D.S. PUMP PANEL
3. BATTERY CHARGER LOCATED IN D3
4. BATTERY CHARGER INDICATOR ON D.S. STEP WELL
5. SUB-FEED CIRCUIT BREAKER PANEL IN D3
6. ADJUSTABLE FULL WIDTH/DEPTH SHELVES TWO IN D1 AND ONE IN D2 AND D3
7. ONE ADJUSTABLE TILT/ SLIDE-OUT TRAY IN P1 AND P4
8. ONE FLOOR MOUNTED SLIDE-OUT TRAY WITH 2.00\"/>

REV	DATE	BY	CH	IMPEL FR
03APR17	LST	PPE	MAKE	
23FEB17	LST	PPE	PIERCE	
19JAN17	LST	KBO	MODEL	

		JOB NO.	30758
		SCALE	DATE
TITLE 1500-D-1000 GAL POLY, 214" PUC RESCUE (2)X-LAYS, LADDERS THRU BODY, DELUGE, GENERATOR	FOR OSCEOLA FIRE DEPARTMENT OSCEOLA, IOWA	DRAWN BY	LST
		CHECKED BY	KBO
DWG NO. 30758AD	NO.	SHEET SIZE	D
		SHEET NO.	1 OF 1