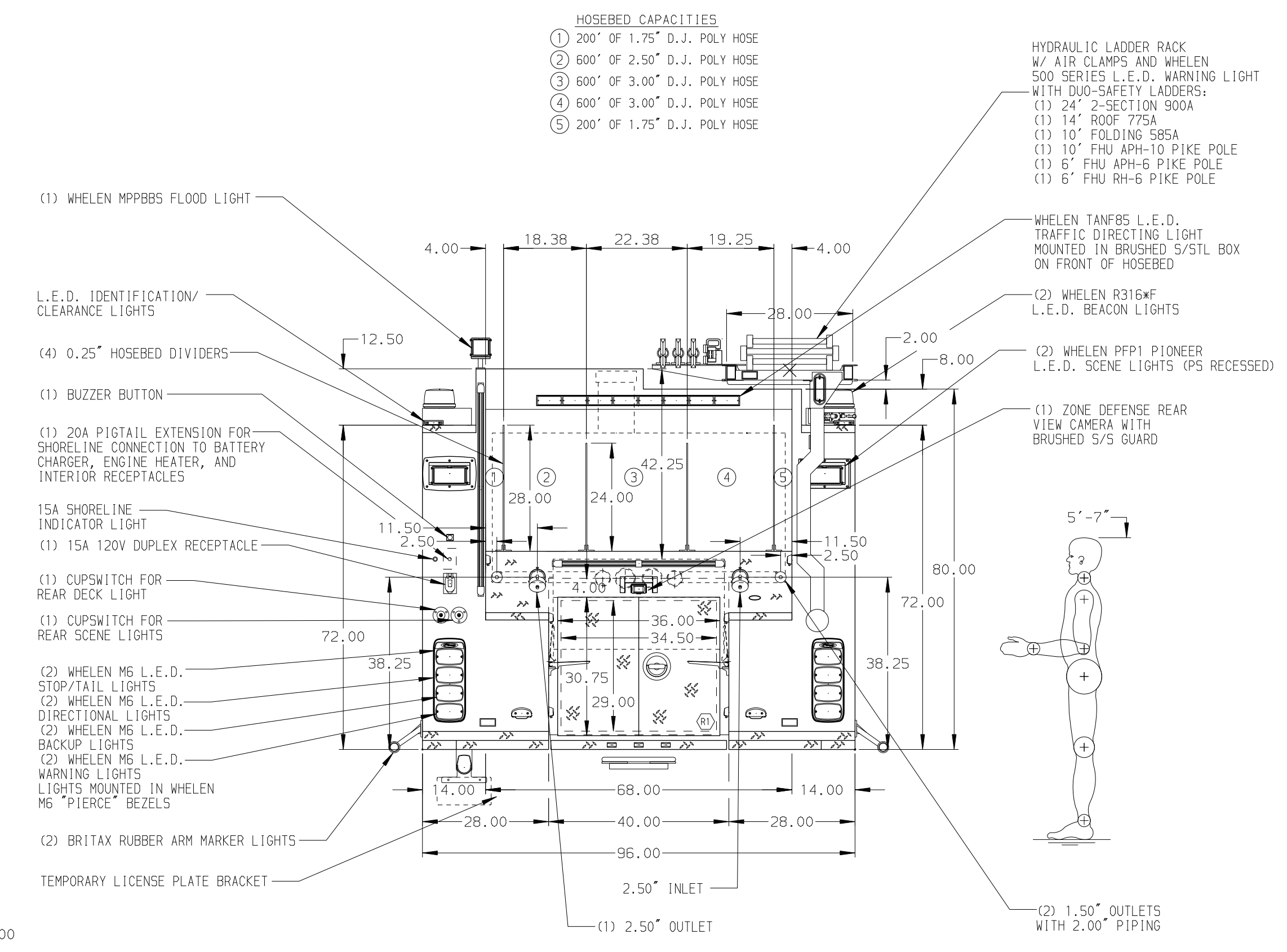
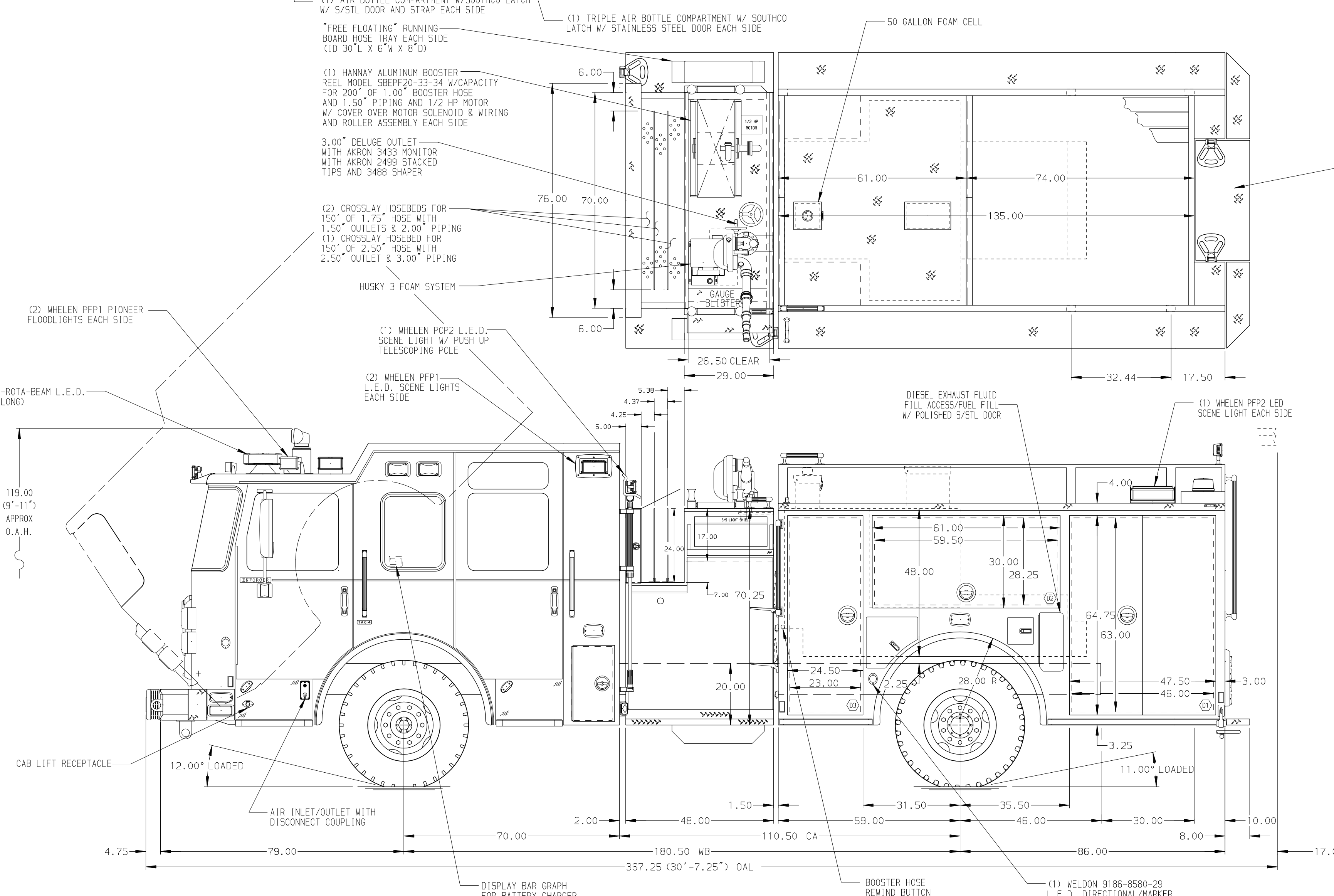


TORX HEAD SCREWS
 NUTCERTS
 COMPRESSION FITTINGS



ALUMINUM BODY

MAXIMUM O.A.H. 120.00"

SIDE ROLL AND FRONTAL IMPACT PROTECTION

NOTE
 DIMENSIONS SHOWN ARE APPROXIMATE AND ARE SUBJECT TO MINOR DEVIATIONS AS MAY OCCUR OR BE NECESSARY IN CONSTRUCTION. MINOR DETAILS NOT SHOWN.

- BRUSHED S/S SCUFFPLATE LOCATED AT EACH CAB DOOR JAMB
- (CTF) MUDFLAPS LOCATED FRONT AND REAR
- S/STL FENDER CROWNS LOCATED FRONT AND REAR
- IOTA BATTERY CHARGER W/ S/STL COVER LOCATED BEHIND DRIVERS SEAT
- PULL STRAPS FOR COMPARTMENT DOORS D2 & P2
- BRUSHED S/S SCUFFPLATE LOCATED ON REAR CAB CORNERS
- 3" POLY SCUFFTAPE LOCATED ON ALL AIR BOTTLE COMPARTMENT OPENINGS
- ONE ADJ FULL WIDTH/DEPTH SHELF W/SQUARE CORNERS IN COMPARTMENTS P1 AND P2; TWO IN D3
- TWO ADJ FULL WIDTH/DEPTH SHELF W/SQUARE CORNERS AND 1" FRONT IN COMPARTMENT D1; THREE IN P3
- CTF WHEEL CHOCKS AND BRACKETS

- ONE SWING-OUT ALUMINUM TOOLBOARD IN COMPARTMENT D2
- BRUSHED S/S ON FRONT COMPARTMENT BULKHEADS
- BRUSHED S/S SCUFFPLATES ON EACH INTERIOR BODY COMPARTMENT DOOR PAN
- BRUSHED S/S SCUFFPLATES ON FRONT AND SIDES OF HOSEBED WALLS
- BRUSHED S/S SCUFFPLATES ON BOTTOM DOOR FRAMES OF D1, D2, D3, P1, P2, P3 & R1
- BRUSHED S/S SCUFFPLATE LOCATED ON FRONT AND REAR WALLS OF BACKBOARD COMPARTMENT
- PEGBOARD WITH TRACKS ON REAR WALL OF COMPARTMENT D2
- 100W IMMERSION HEATER
- U SHAPED ALUMINUM 4-WAY LOCATED ON CREW CAB ROOF
- COMPARTMENT VENTILATION SYSTEM

- 120V 15A DUPLEX SHORELINE RECEPTACLE BEHIND OFFICER SEAT
- DOOR FRAME-HINGE REINFORCEMENT LOCATED ON EACH BODY COMPARTMENT
- 135LB GAS CYLINDERS ON DOORS IN COMPARTMENTS D2 & P2
- DOORS TO OPEN PAST 90 DEGREES IN COMPARTMENTS D2 & P2
- SHelf TRACKS LOCATED IN COMPARTMENTS D1, D3, P1, P2, & P3

REV	DATE	BY	CH	ENFORCER
09MAY16	COL	SHA		
19APR16	COL	SHA		
24FEB16	COL	JBL		

Pierce MANUFACTURING INC.

JOB NO. 29889
 01-09

SCALE 1:24 DATE

DRAWN BY COL 09FEB15

CHECKED BY JBL 10FEB16

SHEET SIZE D SHEET NO. 1 OF 1

TITLE 1500-D-500 GAL POLY W/50 GAL FOAM CELL, 145" FDLER (3) X LAYS, DELUGE, BOOSTER REEL, HYD. LADDER RACK

FOR PORTLAND FIRE & RESCUE PORTLAND, OREGON

DWG NO. 29889AD