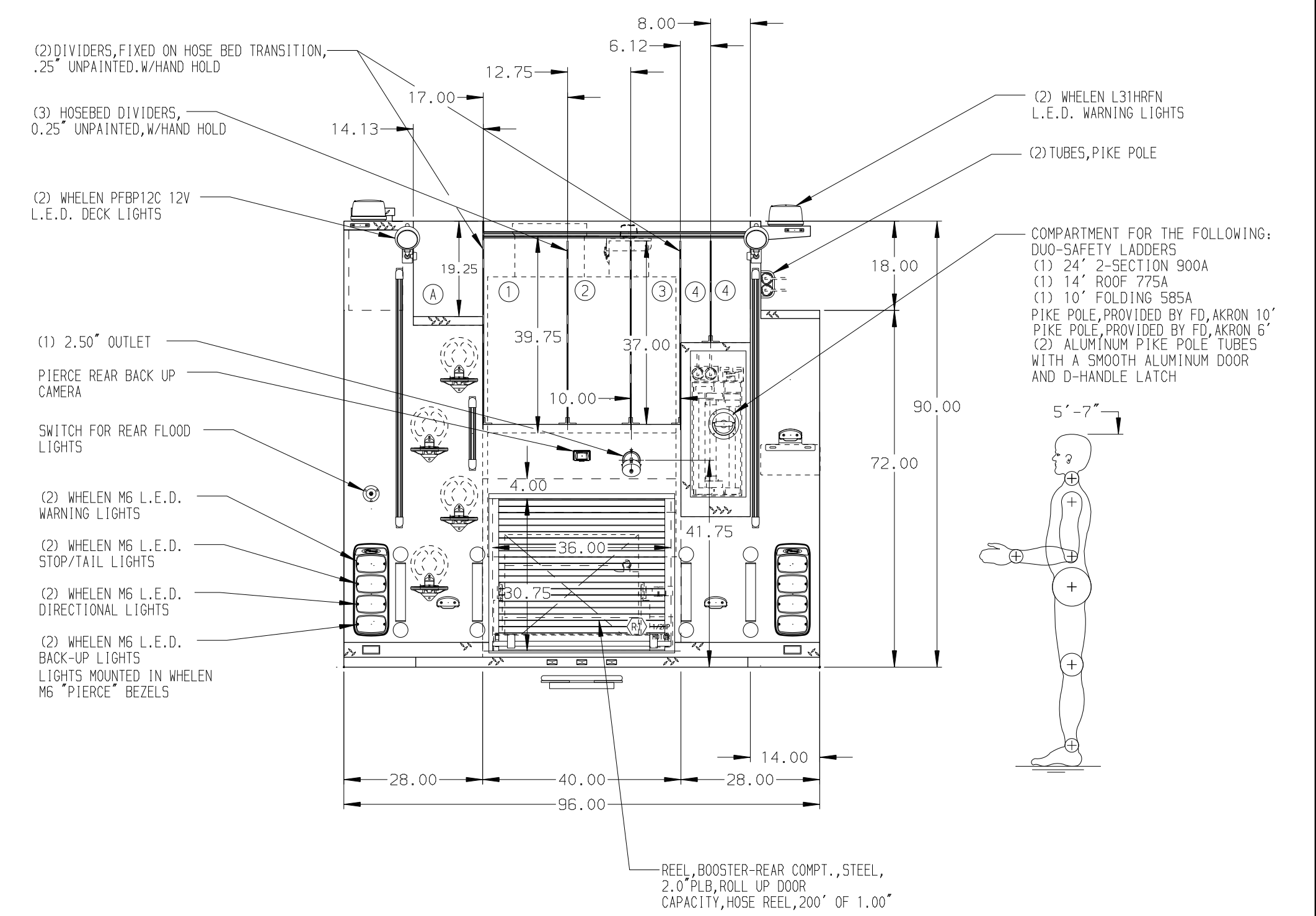
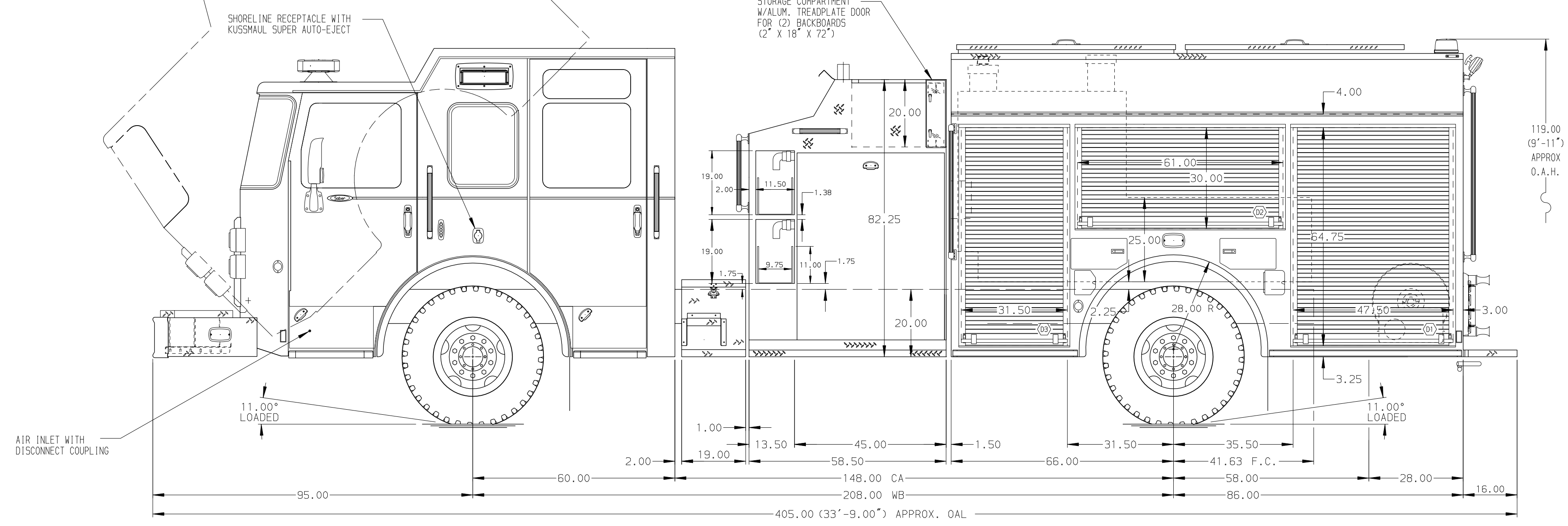


- HOSEBED CAPACITIES
- (A) WALKWAY
 - (1) 600' OF 5.00" D.J. POLY HOSE
 - (2) 600' OF 3.00" D.J. POLY HOSE
 - (3) 600' OF 2.50" D.J. POLY HOSE
 - (4) 400' OF 1.75" D.J. POLY HOSE



ALUMINUM BODY

NOTE
 DIMENSIONS SHOWN ARE APPROXIMATE AND ARE SUBJECT TO MINOR DEVIATIONS AS MAY OCCUR OR BE NECESSARY IN CONSTRUCTION. MINOR DETAILS NOT SHOWN.

REV	DATE	BY	CH	SABER FR
23AUG16	JAF	-		CHASSIS DATA
28JUN16	JAF	BRX		MAKE
23JUN16	JLA	RW1		PIERCE
17MAY16	JAF	BRX		MODEL
08APR16	MWA	CDU		

		JOB NO.	30039
		SCALE	DATE
TITLE 1250-D-500 GAL. WATER WITH (2) 30 GAL. FOAM CELLS 152" PUMPER BODY; DELUGE; (2) SPEEDLAYS	FOR PUEBLO FIRE DEPARTMENT PUEBLO, CO	DRAWN BY	MWA
		CHECKED BY	CDU
DWG NO.	30039AD	SHEET SIZE	D
		SHEET NO.	1 OF 1