

PASSENGER'S SIDE COMPARTMENTS CONTAIN THE FOLLOWING:

COMPARTMENT P1 CONTAINS:

- (1) HORIZONTAL DIVIDER
- (2) STD DEPTH ADJ SLIDE OUT TRAYS W/TOOLBOARDS
- (1) VERTICAL COMPARTMENT PEGBOARD DIVIDER
- (1) STD DEPTH SLIDE OUT/TILT TRAY (PEGBOARD)
- (1) FLOOR MOUNTED PEGBOARD TRAY
- (1) STD DEPTH ADJ SLIDE OUT PEGBOARD TRAY
- PEGBOARD ON LEFHAND SIDE WALL
- PEGBOARD ON REAR WALL
- (1) 15A, 120V DUPLEX RECEPTACLE
- (1) SWITCH FOR 30A RECEPTACLE
- (2) HYDRAULIC REELS W/100' OF HOSE EACH
- (2) HYDRAULIC DUMP VALVES
- (1) TOOL AIR OUTLET

COMPARTMENT P2 CONTAINS:

- (2) STD DEPTH ADJ SLIDE OUT/TILT TRAYS

COMPARTMENT P3 CONTAINS:

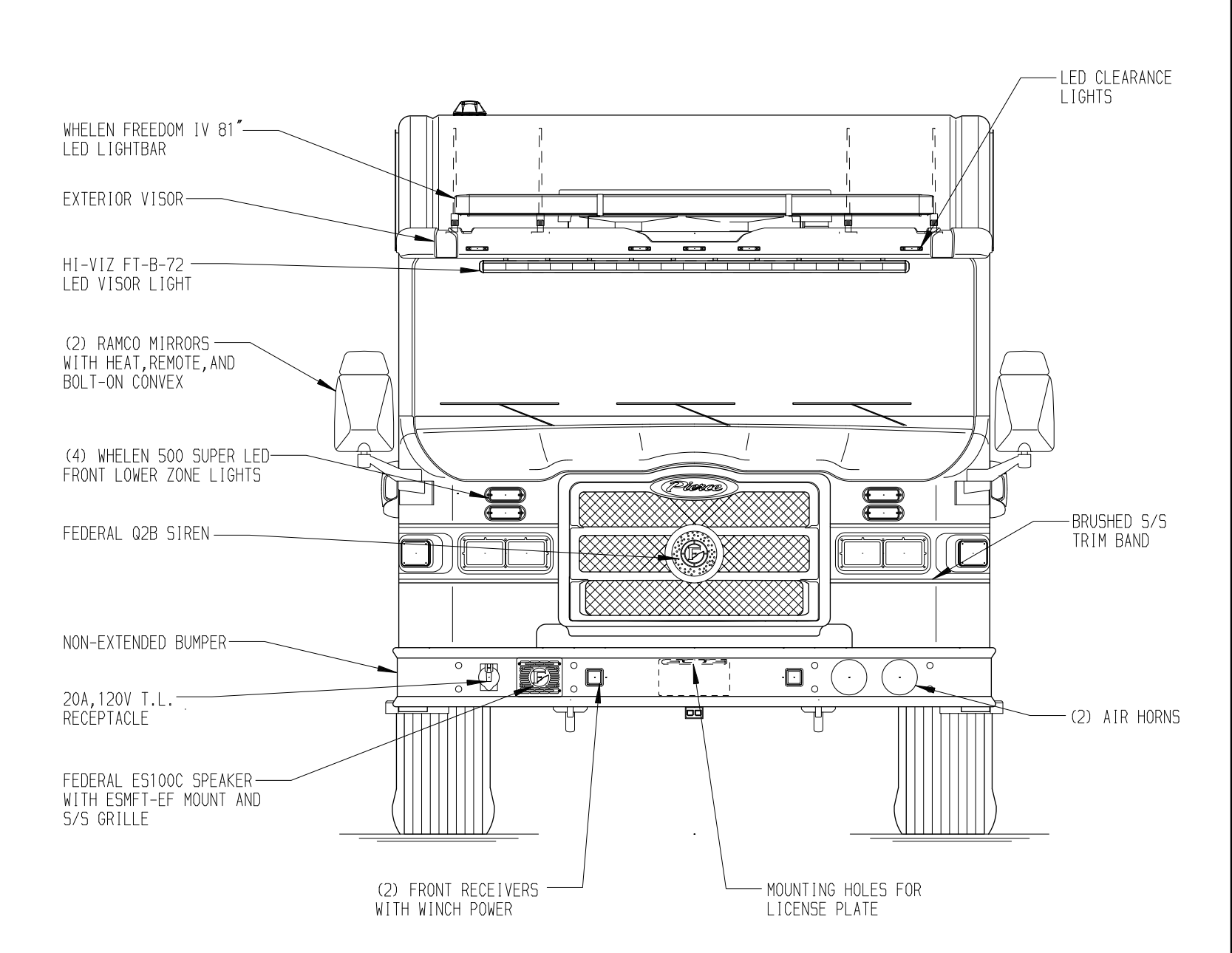
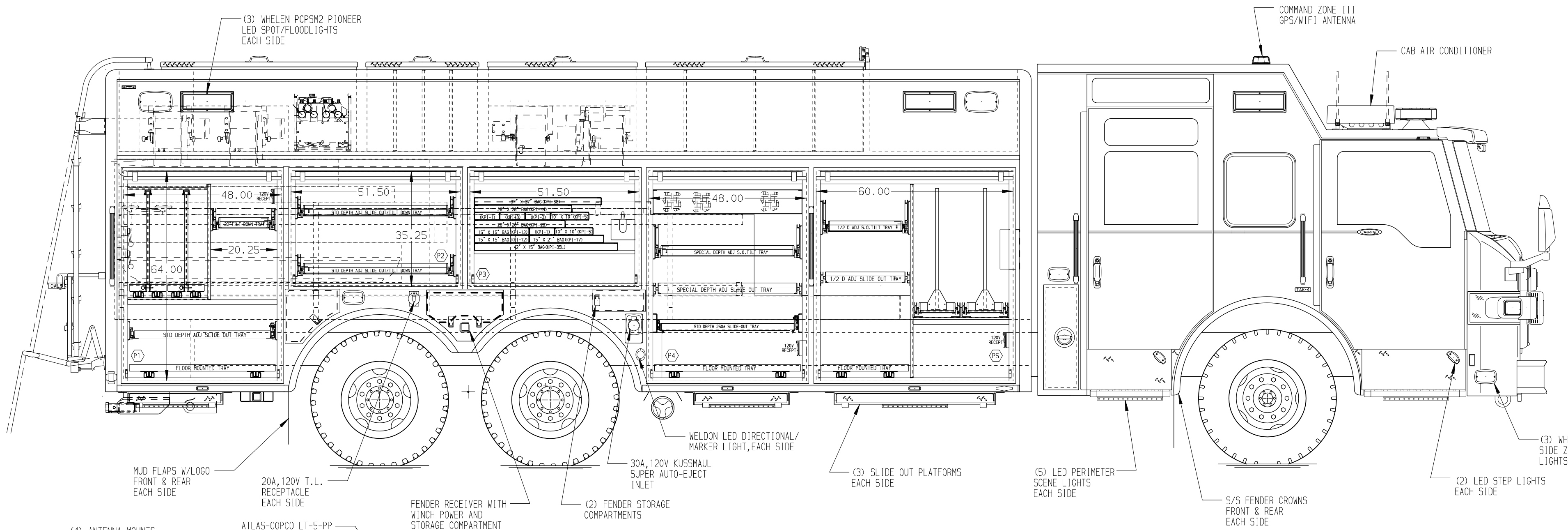
- (1) RACK FOR 13 AIR BAGS
- (1) ELECTRIC CORD REEL WITH 200' OF 10/4 YELLOW CORD
- (1) LOW PRESSURE AIR REEL W/200' OF HOSE

COMPARTMENT P4 CONTAINS:

- (1) TRANSVERSE STORAGE TROUGH
- (1) STD DEPTH ADJ SLIDE OUT TRAY
- (1) SPECIAL DEPTH ADJ SLIDE OUT TRAY
- (1) 1/2 DEPTH ADJ SLIDE OUT/TILT TRAY
- (2) 2-WAY SLIDE OUT TRAYS WITH TOOLBOARDS
- (1) FLOOR MOUNTED TRAY
- (1) 15A, 120V DUPLEX RECEPTACLE
- (1) TOOL AIR COMPRESSOR CONTROLLER
- (1) TOOL AIR OUTLET

COMPARTMENT P5 CONTAINS:

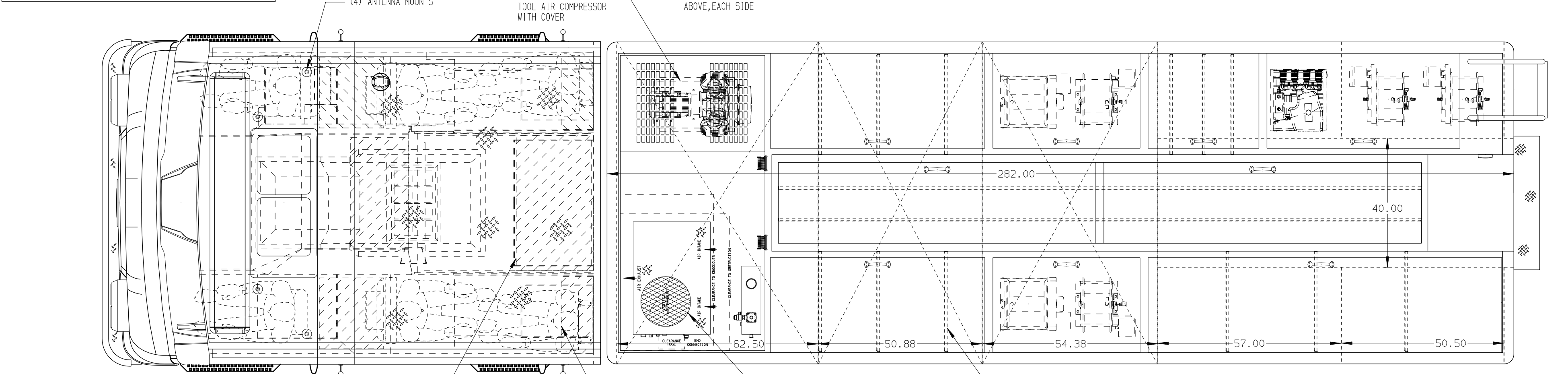
- (1) VERTICAL PEGBOARD STYLE DIVIDER
- (1) HORIZONTAL FLOOR EXTENSION
- (1) 1/2 DEPTH ADJ SLIDE OUT TRAY
- (1) 1/2 DEPTH ADJ SLIDE OUT/TILT TRAY
- (2) 2-WAY SLIDE OUT TRAYS WITH TOOLBOARDS
- (1) FLOOR MOUNTED TRAY
- (1) 15A, 120V DUPLEX RECEPTACLE
- (1) TOOL AIR COMPRESSOR CONTROLLER
- (1) TOOL AIR OUTLET



REAR COMPARTMENT CONTAINS THE FOLLOWING:

COMPARTMENT R1 CONTAINS:

- (1) HORIZONTAL FLOOR EXTENSION
- (1) RACK FOR THE FOLLOWING:
  - (6) SHEETS OF PLYWOOD
  - (1) 35' 2-SECTION LADDER
  - (1) 28' 2-SECTION LADDER
  - (1) 16' 2-SECTION LADDER
  - (2) 8" RUBBISH HOOKS
  - (2) 2.5" PVC TUBE TROUGHS
  - (1) STOKES BASKET
  - (2) MISCELLANEOUS STORAGE TROUGHS
  - (6) 4" PVC TUBE TROUGHS
  - (1) 8" DEEP TROUGH FOR PICKETS
  - (1) 12" FOLDING LADDER
  - (4) PIKE POLES



DRIVER'S SIDE COMPARTMENTS CONTAIN THE FOLLOWING:

COMPARTMENT D1 CONTAINS:

- (2) STD DEPTH ADJ SLIDE OUT TRAYS
- (2) SWING OUT TOOLBOARDS
- PEGBOARD ON REAR WALL
- (1) 15A, 120V DUPLEX RECEPTACLE
- (1) TOOL AIR OUTLET

COMPARTMENT D2 CONTAINS:

- (2) STD DEPTH ADJ SLIDE OUT/TILT TRAYS

COMPARTMENT D3 CONTAINS:

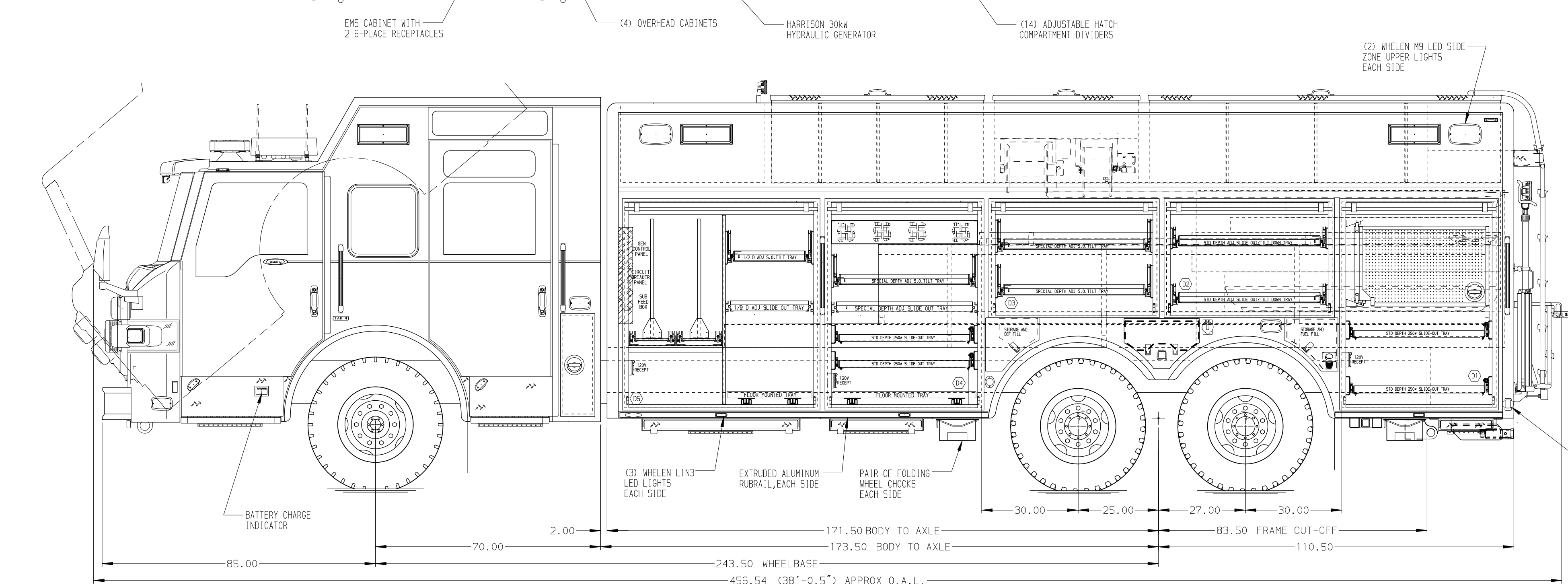
- (2) SPECIAL DEPTH ADJ SLIDE OUT/TILT TRAYS
- (1) ELECTRIC CORD REEL WITH 200' OF 10/4 YELLOW CORD
- (1) LOW PRESSURE AIR REEL W/200' OF HOSE

COMPARTMENT D4 CONTAINS:

- (1) TRANSVERSE STORAGE TROUGH
- (2) STD DEPTH ADJ SLIDE OUT TRAY
- (1) SPECIAL DEPTH ADJ SLIDE OUT/TILT TRAY
- (1) FLOOR MOUNTED TRAY
- (1) 15A, 120V DUPLEX RECEPTACLE

COMPARTMENT D5 CONTAINS:

- (1) BRAKE SYSTEM AIR COMPRESSOR
- (1) NEMAR BATTERY CHARGER
- (1) CIRCUIT BREAKER PANEL
- (1) GENERATOR METER PANEL
- (1) SUB FEED BOX
- (1) VERTICAL PEGBOARD STYLE DIVIDER
- (1) HORIZONTAL FLOOR EXTENSION
- (1) 1/2 DEPTH ADJ SLIDE OUT TRAY
- (1) 1/2 DEPTH ADJ SLIDE OUT/TILT TRAY
- (2) 2-WAY SLIDE OUT TRAYS WITH TOOLBOARDS
- (1) FLOOR MOUNTED TRAY
- (1) 15A, 120V DUPLEX RECEPTACLE



COMPARTMENT D1 CONTAINS:

- (2) STD DEPTH ADJ SLIDE OUT TRAYS
- (2) SWING OUT TOOLBOARDS
- PEGBOARD ON REAR WALL
- (1) 15A, 120V DUPLEX RECEPTACLE
- (1) TOOL AIR OUTLET

COMPARTMENT D2 CONTAINS:

- (2) STD DEPTH ADJ SLIDE OUT/TILT TRAYS

COMPARTMENT D3 CONTAINS:

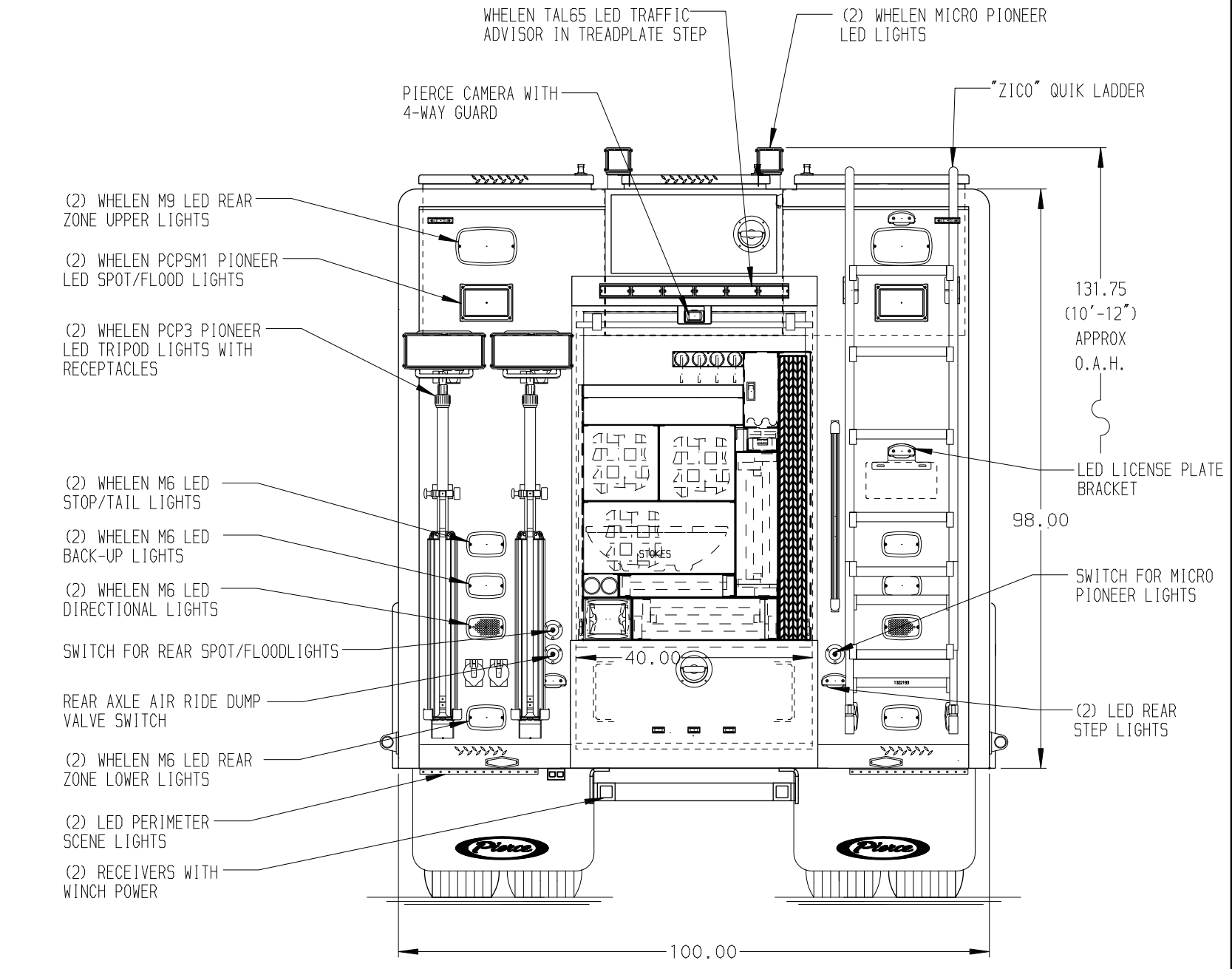
- (2) SPECIAL DEPTH ADJ SLIDE OUT/TILT TRAYS
- (1) ELECTRIC CORD REEL WITH 200' OF 10/4 YELLOW CORD
- (1) LOW PRESSURE AIR REEL W/200' OF HOSE

COMPARTMENT D4 CONTAINS:

- (1) TRANSVERSE STORAGE TROUGH
- (2) STD DEPTH ADJ SLIDE OUT TRAY
- (1) SPECIAL DEPTH ADJ SLIDE OUT/TILT TRAY
- (1) FLOOR MOUNTED TRAY
- (1) 15A, 120V DUPLEX RECEPTACLE

COMPARTMENT D5 CONTAINS:

- (1) BRAKE SYSTEM AIR COMPRESSOR
- (1) NEMAR BATTERY CHARGER
- (1) CIRCUIT BREAKER PANEL
- (1) GENERATOR METER PANEL
- (1) SUB FEED BOX
- (1) VERTICAL PEGBOARD STYLE DIVIDER
- (1) HORIZONTAL FLOOR EXTENSION
- (1) 1/2 DEPTH ADJ SLIDE OUT TRAY
- (1) 1/2 DEPTH ADJ SLIDE OUT/TILT TRAY
- (2) 2-WAY SLIDE OUT TRAYS WITH TOOLBOARDS
- (1) FLOOR MOUNTED TRAY
- (1) 15A, 120V DUPLEX RECEPTACLE



NOTE  
DIMENSIONS SHOWN ARE APPROXIMATE AND ARE SUBJECT TO MINOR DEVIATIONS AS MAY OCCUR OR BE NECESSARY IN CONSTRUCTION. MINOR DETAILS NOT SHOWN.

NOTES:  
1. BRUSHED 5/8 SCUFFPLATES ON CAB AND CREW CAB DOOR JAMBS  
2. ALUMINUM TREADPLATE ON CREW CAB ROOF  
3. FLOOR IN CAB AND CREW CAB TO BE PADDED RUBBER  
4. PULL STRAPS ON ALL BODY ROLL-UP DOORS  
5. 5/8 L-SHAPED GUARDS ON ALL BODY ROLL-UP DOORS  
6. AMORR DUAL LED LIGHTS IN ALL BODY COMPARTMENTS  
7. STORAGE COMPARTMENT ON TOP OF THE ENGINE TUNNEL  
8. TURTLE TILE IN BODY COMPARTMENTS P5, P3, P2, R1, D1, D2, D3, D5, AND HATCH COMPARTMENT FLOORS NOT CONTAINING REELS  
9. TURTLE TILE ON ALL SHELVES AND TRAYS  
10. 15A, 120V T.L. RECEPTACLES LOCATED BEHIND DRIVER AND OFFICER'S SEATS AND IN OVERHEAD CABINETS  
11. 30A, 240V T.L. RECEPTACLE LOCATED IN HATCH COMPARTMENT ABOVE P1  
12. MOUNTING BRACKET FOR HYDRAULIC POWER UNIT IN P5 REAR HATCH COMPARTMENT

CLEAR DOOR WIDTH KEY

AMORR ROLL UP DOORS:	-1 7/8"
CORTITE ROLL UP DOORS:	-2 3/4"
PIERCE DOUBLE LIP DOORS:	-4 1/4"
PIERCE LIFT-UP LAP DOORS:	-1 1/2"

(EX: 60" F-F - 1 7/8" = 58 1/8" CLEAR)  
(F-F) = FRAME TO FRAME

MAXIMUM O.A.L. 38'-7"  
SIDE ROLL & FRONTAL IMPACT PROTECTION

REV	DATE	BY	CH	CHASSIS DATA
21DEC16	DHE	CDK	MAKE	PIERCE
25OCT16	DHE	CDK	MODEL	VXFR7020
26JUL16	DHE	CDK	MODEL	VXFR7020

<b>Pierce MANUFACTURING INC.</b>		JOB NO.	29817
		SCALE	DATE
		1:24	06JUL16
TITLE	HEAVY DUTY RESCUE NON-WALKIN	DRAWN BY	DHE
FOR	SACRAMENTO METROPOLITAN FIRE DISTRICT SACRAMENTO, CA	CHECKED BY	CDK
DWG NO.	29817AD	DRAWN BY	RYAN WRIGHT
		CHECKED BY	CDK
		SHEET SIZE	SHEET NO.
		D	1 OF 1