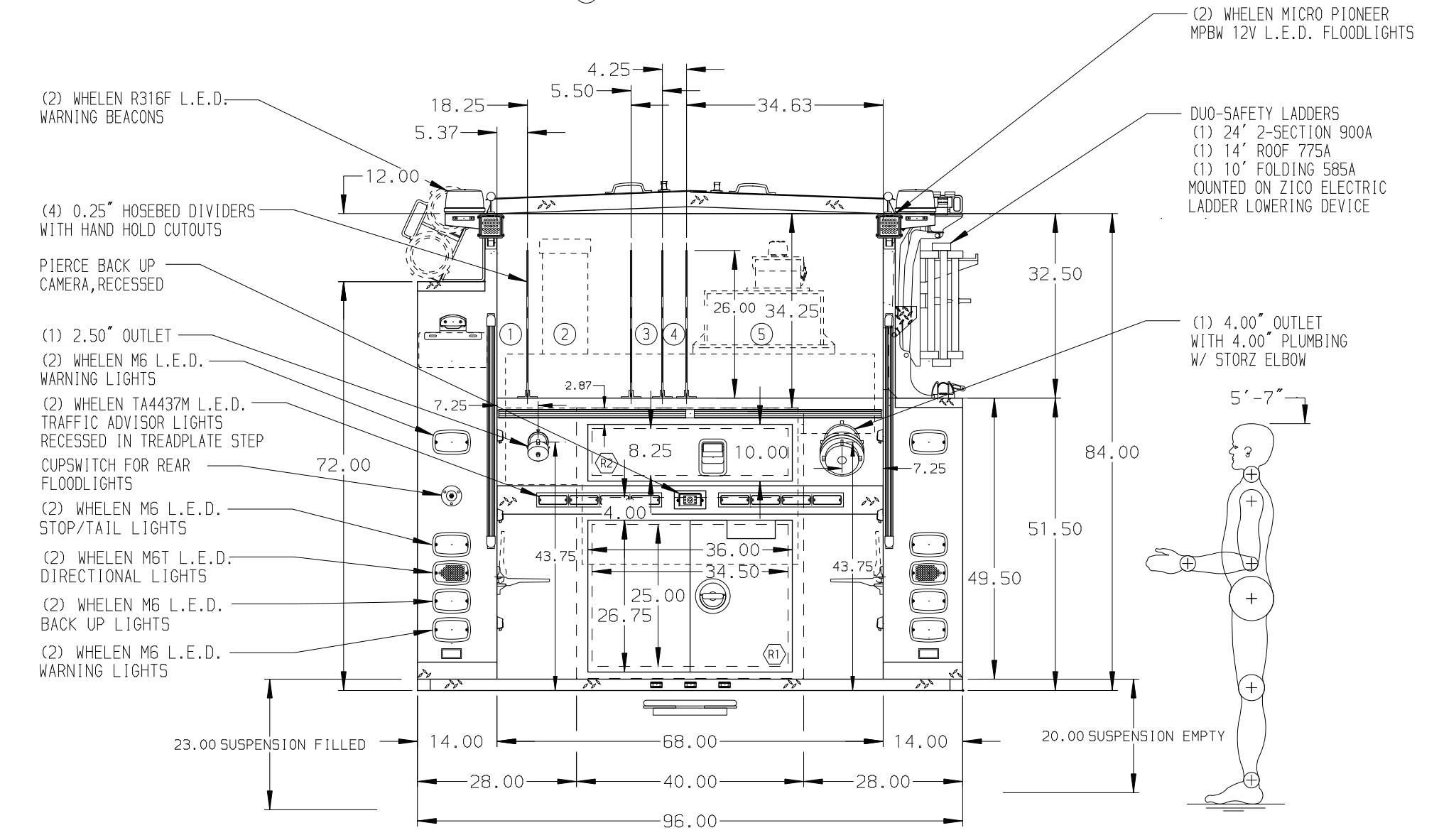
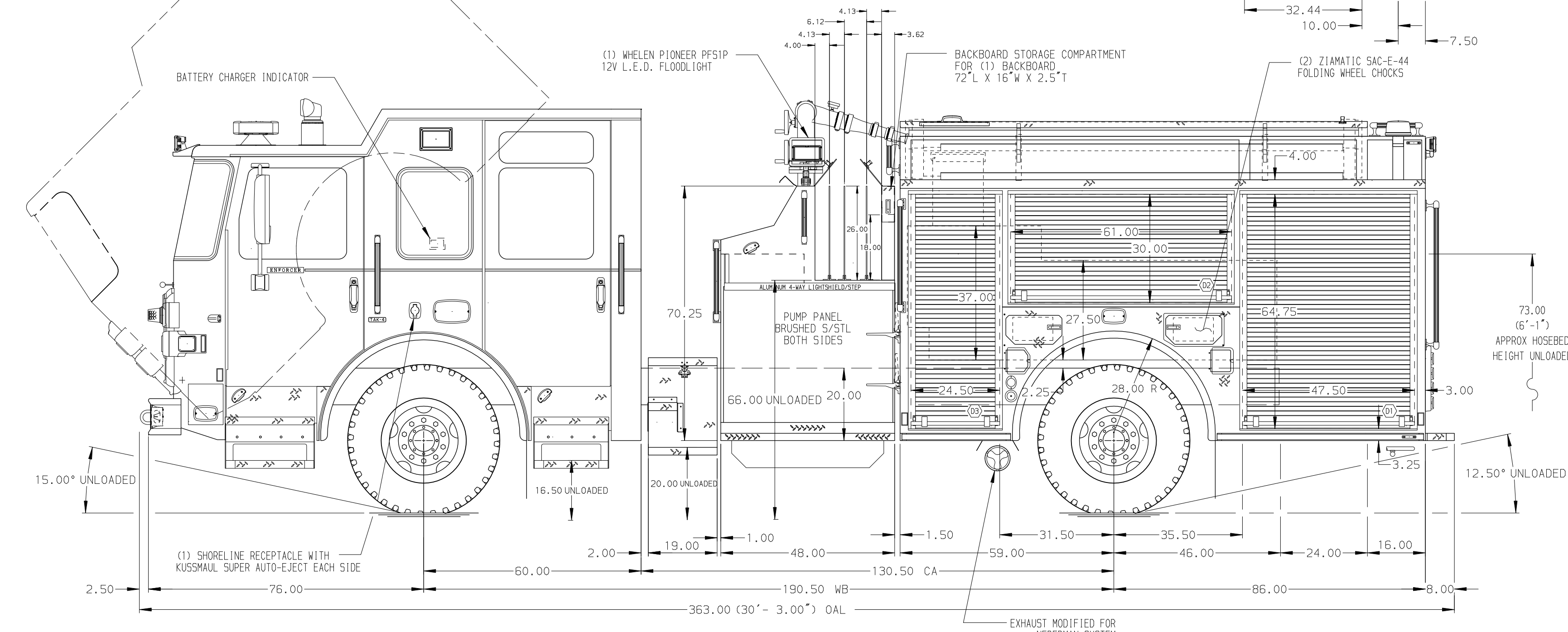


- HOSEBED CAPACITIES
- ① - 200' OF 2.50" HOSE
 - ② - 600' OF 2.50" HOSE
 - ③ - 200' OF 2.50" HOSE
 - ④ - 200' OF 1.75" HOSE
 - ⑤ - 1000' OF 4.00" HOSE



ALUMINUM BODY MAXIMUM O.A.L. 363.00" MAXIMUM O.A.H. 118.00"

NOTE
 DIMENSIONS SHOWN ARE APPROXIMATE AND ARE SUBJECT TO MINOR DEVIATIONS AS MAY OCCUR OR BE NECESSARY IN CONSTRUCTION. MINOR DETAILS NOT SHOWN.

1. BATTERY CHARGER LOCATED BEHIND DRIVERS SEAT
2. S/STL PROTECTIVE GUARD FOR ROLL-UP DOOR ON COMPARTMENT D1, D2, D3, P1, & P3
3. ONE ADJUSTABLE SHELF (FULL DEPTH/FULL WIDTH) IN COMPARTMENTS D2 & P3; AND TWO IN D1 & D3
4. ONE FLOOR MOUNTED SLIDE OUT TRAY IN COMPARTMENT R1
5. TRANSVERSE FULL WIDTH SHELF BETWEEN COMPARTMENTS D1 AND P1
6. NOTCHED PARTITION BETWEEN COMPARTMENTS D1/R1 AND P1/R1
7. FOAMPRO 2002 SINGLE AGENT FOAM SYSTEM
8. AIR INLET/OUTLET WITH DISCONNECT FITTING LOCATED ON DRIVERS SEAT RISER
9. TWO ADJUSTABLE SHELVES WITH 30 DEGREE PITCH LOCATED IN COMPARTMENTS D3
10. ONE ADJUSTABLE SHELF WITH 1.50" SIDES LOCATED IN COMPARTMENT P3
11. BRUSHED ALUMINUM SCUFFPLATE/GUARDS ON WATER AND FOAM DOMES

| | | | | | |
|-------------------------------------|---------|---|------------|-----|-----------|
| | | JOB NO. | 29883 | | |
| | | SCALE | DATE | | |
| PIERCE MANUFACTURING INC. | TITLE | 1500-D-500P W/10G FOAM TANK, SPCL 145" BODY DS FH PS 3/4, (2)CROSSSLAYS, ZICO LADDER RACK ON PS, DELUGE | DRAWN BY | MWA | 15MAR16 |
| | FOR | CITY OF SEATTLE SEATTLE, WASHINGTON | CHECKED BY | JBL | 16MAR16 |
| | DWG NO. | 29883AD | SHEET SIZE | D | SHEET NO. |

| REV | DATE | BY | CH | ENFORCER |
|-----|---------|-----|-----|--------------|
| 1 | 14OCT16 | MWA | JBL | CHASSIS DATA |
| 2 | 17AUG16 | MWA | JTH | MAKE |
| 3 | 14JUL16 | MWA | JTH | PIERCE |
| 4 | 21MAR16 | MWA | JBL | MODEL |