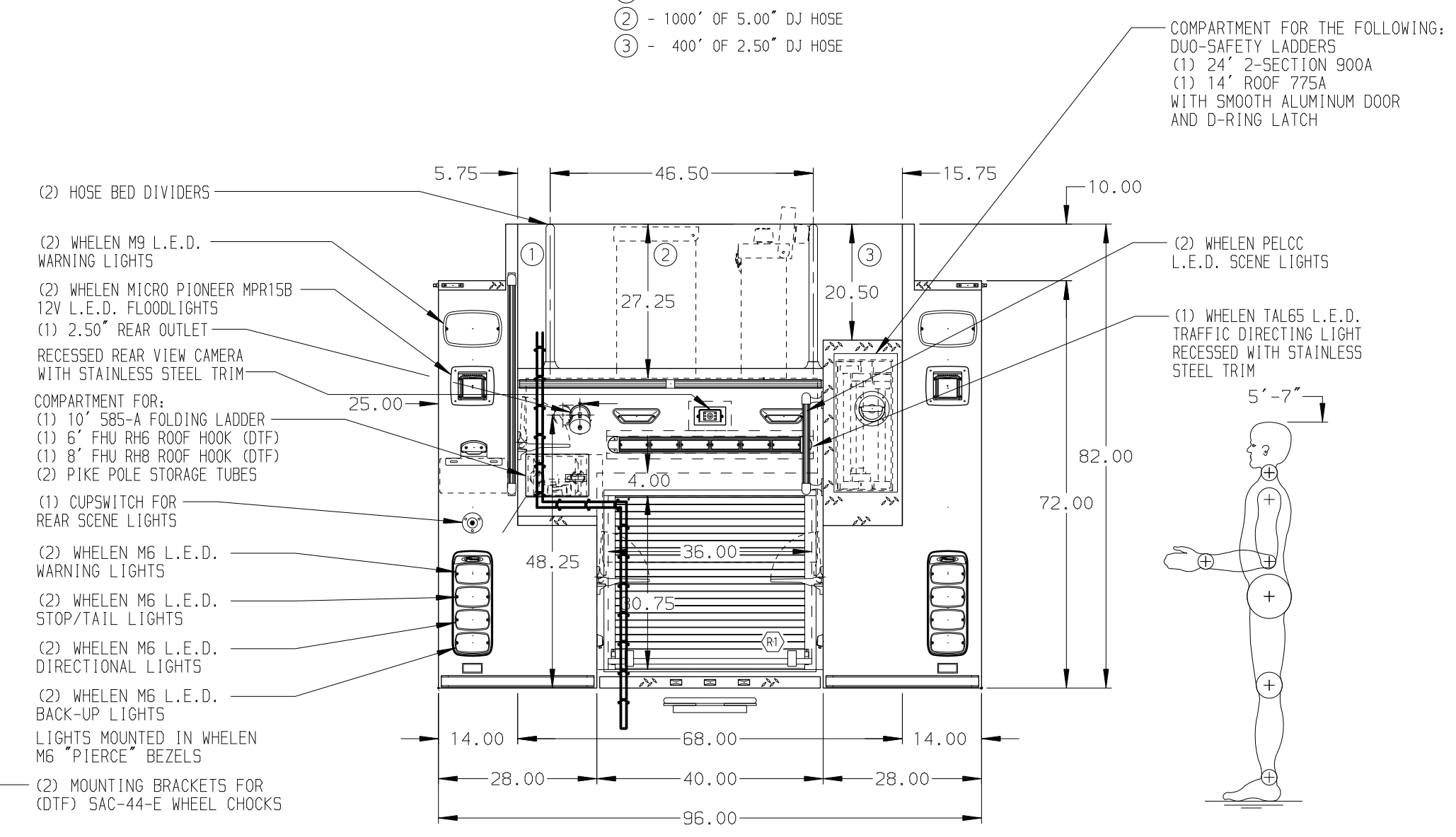
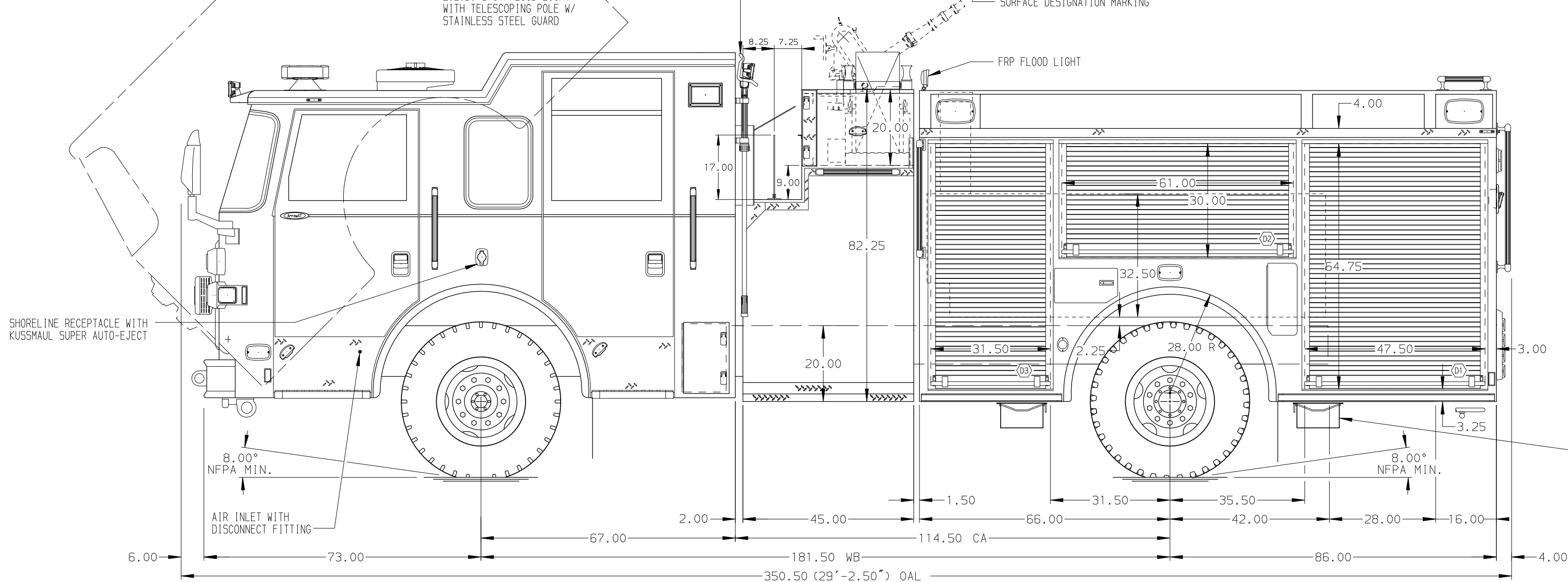


- HOSEBED CAPACITIES
- ① - 200' OF 2.50" DJ HOSE
 - ② - 1000' OF 5.00" DJ HOSE
 - ③ - 400' OF 2.50" DJ HOSE



ALUMINUM BODY

NOTE
 DIMENSIONS SHOWN ARE APPROXIMATE AND ARE SUBJECT TO MINOR DEVIATIONS AS MAY OCCUR OR BE NECESSARY IN CONSTRUCTION. MINOR DETAILS NOT SHOWN.

1. ONSPOT AUTOMATIC TIRE CHAINS TO BE PROVIDED AT REAR
2. BATTERY CHARGER LOCATED BEHIND DRIVER'S SEAT
3. BATTERY CHARGE INDICATOR LOCATED NEAR D.S. SEAT RISER WITH BRACKET
4. ONE FULL WIDTH/DEPTH PAINTED ADJUSTABLE SHELF IN COMPARTMENT D2, P2, R1, TWO IN D1, P1, THREE IN D3, P3
5. ONE FLOOR MOUNTED SLIDE-OUT TRAY IN COMPARTMENT R1 & D1
6. AIR OUTLET AT DS PUMP PANEL

REV	DATE	BY	CH	ARROW	XT
13SEP16	GVH	JGL			
18AUG16	GVH	JGO			
17JUN16	GVH	KBO			

		JOB NO.	30211
		SCALE	1:24
TITLE 1500-D-525P, 500G WATER, 25G FOAM, 152" FDLER BODY (2) X-LAYS, BOOSTER REEL, DELUGE, HUSKY 3		DRAWN BY	GVH
		CHECKED BY	KBO
FOR TUSCALOOSA FIRE RESCUE SERVICE TUSCALOOSA, ALABAMA		DWG NO.	30211AD
		SHEET NO.	1 OF 1