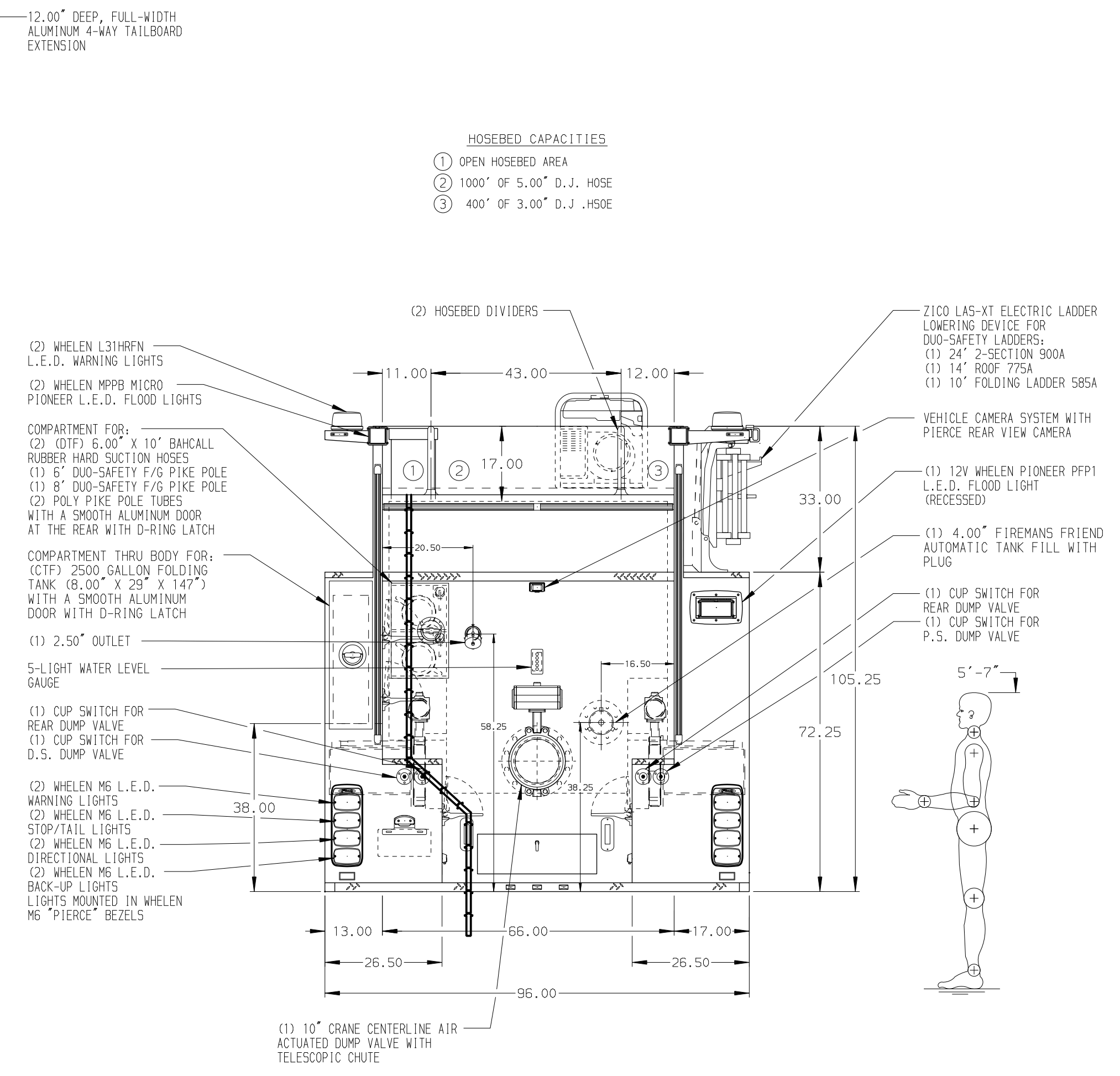
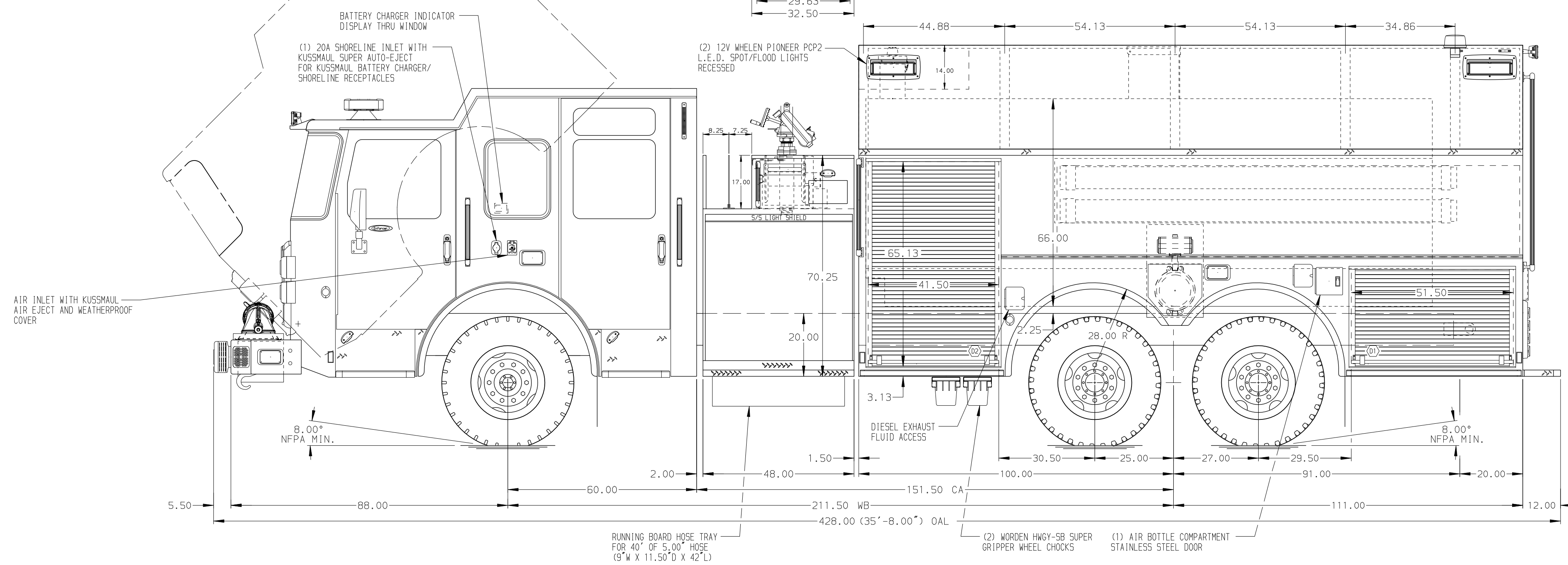


- HOSEBED CAPACITIES**
- ① OPEN HOSEBED AREA
 - ② 1000' OF 5.00\"/>



ALUMINUM BODY MAXIMUM O.A.H. 132.50" MAXIMUM O.A.L. 468.00" SIDE ROLL AND FRONTAL IMPACT PROTECTION

NOTE
DIMENSIONS SHOWN ARE APPROXIMATE AND ARE SUBJECT TO MINOR DEVIATIONS AS MAY OCCUR OR BE NECESSARY IN CONSTRUCTION. MINOR DETAILS NOT SHOWN.

1. KUSSMAUL 1000 BATTERY CHARGER LOCATED BEHIND DRIVER'S SEAT
2. WHELEN PELCO L.E.D. LIGHTS IN CARGO AREA FOR DESIGNATED WALKWAY
3. CIRCUIT BREAKER PANEL IN COMPARTMENT D2
4. ONE ADJUSTABLE FULL WIDTH/DEPTH SHELF IN COMPARTMENTS D2 & P2; TWO IN P1 & P4
5. ONE ADJUSTABLE SLIDE-OUT/TILT TRAY IN COMPARTMENTS P2 & P3
6. ONE 20A, 120V DUPLEX RECEPTACLE LOCATED IN EMS CABINET

REV	DATE	BY	CH	ENFORCER	CHASSIS DATA	TITLE
070C16	NPA	DTS			MAKE	2000-D-2500P W/30 GAL FOAM CELL, 211" TANKER BODY
08SEP16	NPA	DTS			PIERCE	(2) XLAYS, ZICO LADDER RACK, DELUGE, GAS GENERATOR
15JUN16	JWO	KBO				WASHINGTON TOWNSHIP FIRE DEPARTMENT
25MAY16	NPA	KBO				WASHINGTON, MICHIGAN
						DWG NO. 30136AD

Pierce MANUFACTURING INC.

JOB NO. 30136
SCALE 1:24
DATE
DRAWN BY NPA 18MAY16
CHECKED BY KBO 18MAY16
SHEET SIZE D SHEET NO. 1 OF 1