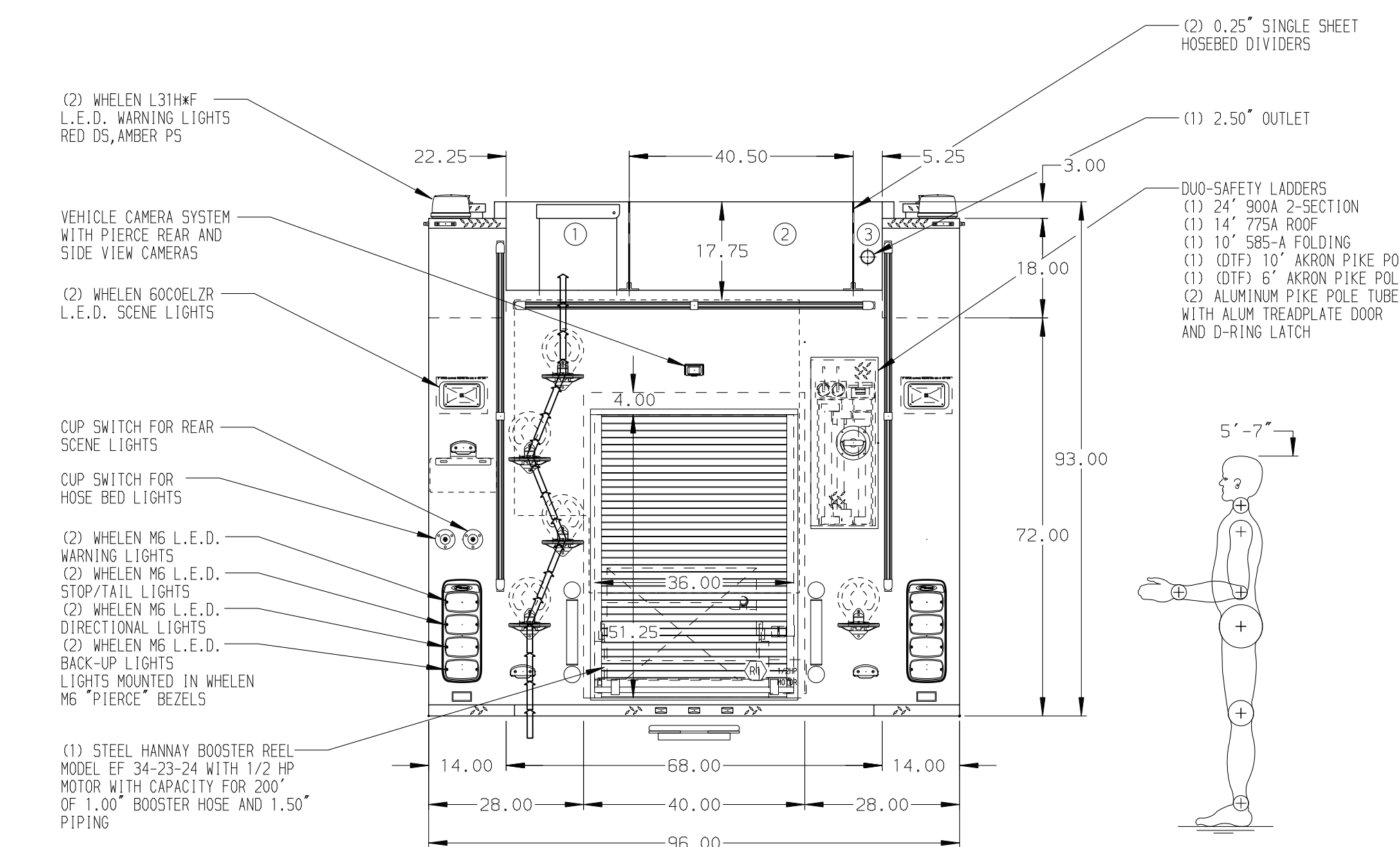
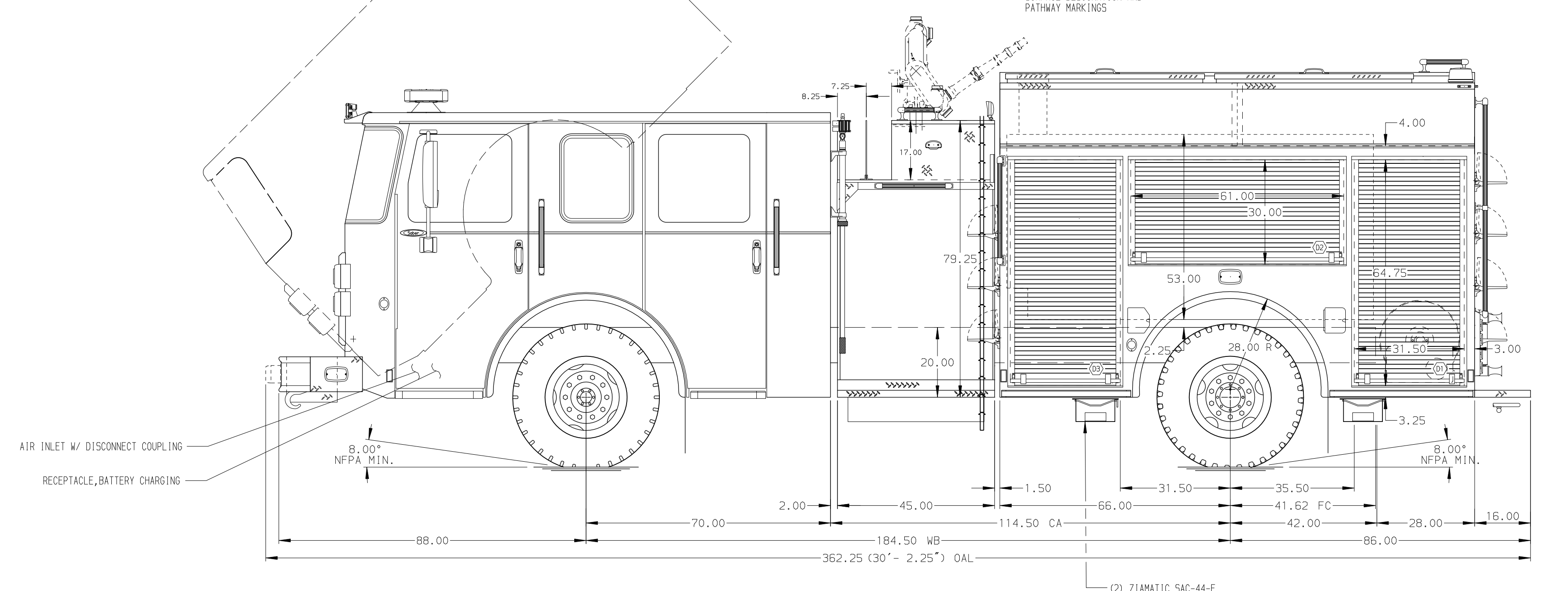


- HOSEBED CAPACITIES
- ① 600' OF 3.00" D.J. POLY HOSE
  - ② 1000' OF 5.00" D.J. POLY HOSE
  - ③ 200' OF 2.50" D.J. POLY HOSE



ALUMINUM BODY

NOTE  
DIMENSIONS SHOWN ARE APPROXIMATE AND ARE SUBJECT TO MINOR DEVIATIONS AS MAY OCCUR OR BE NECESSARY IN CONSTRUCTION. MINOR DETAILS NOT SHOWN.

REV	DATE	BY	CH	SABER FR
27MAR17	RW1	JAF		
22FEB17	JLA	RW1		

		JOB NO.	30825
		SCALE	DATE
TITLE	1500-D-1000P 136" BODY, DS FH, PS FH FD	DRAWN BY	CSQ
FOR	(2) XLAYS, DELUGE, BOOSTER REEL	CHECKED BY	KBO
	WAYCROSS FIRE DEPARTMENT	SHEET SIZE	SHEET NO.
	WAYCROSS, GEORGIA	D	1 OF 1
DWG NO.	30825AD		