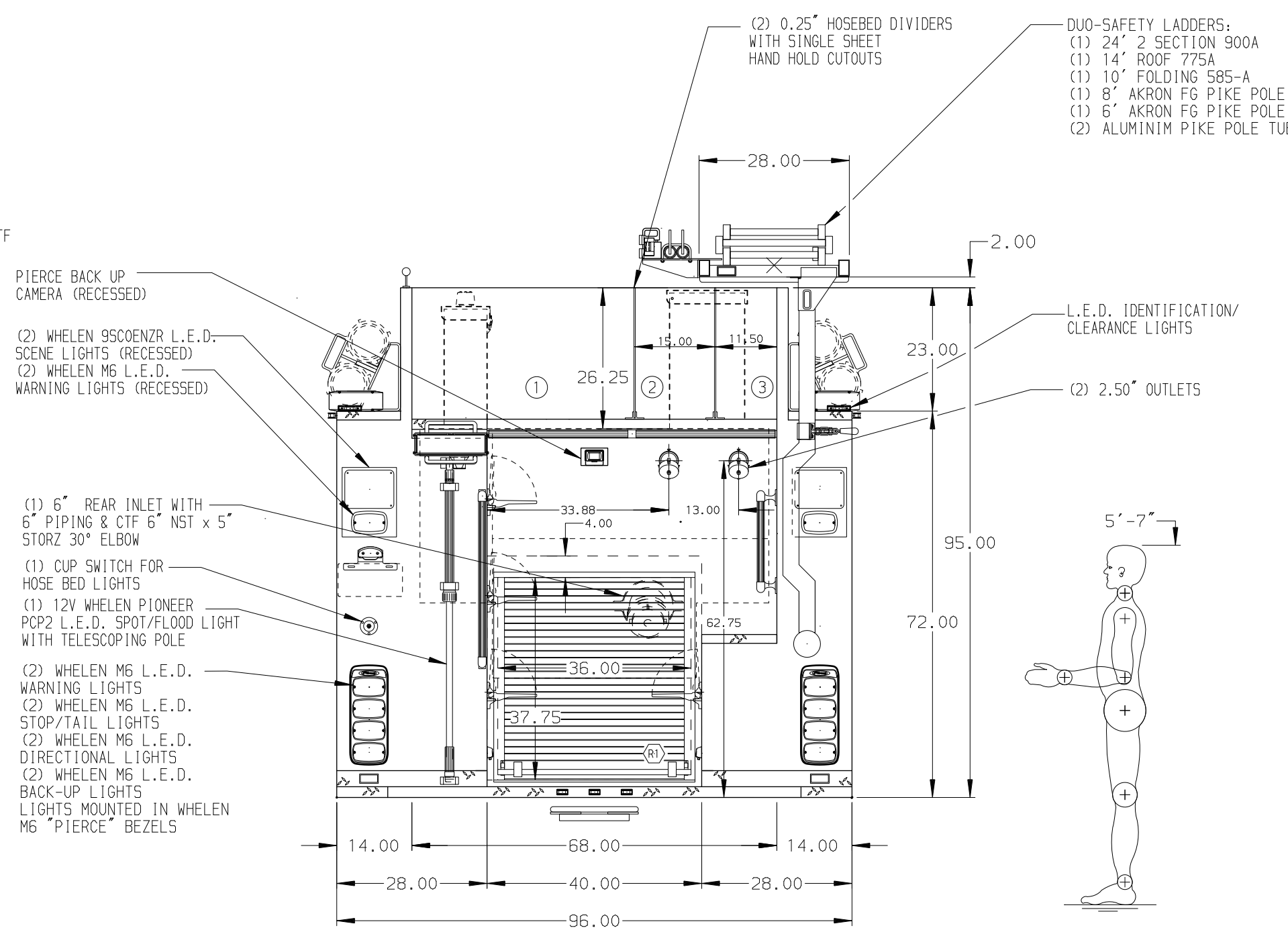


- HOSEBED CAPACITIES
- ① 1500' OF 5.00" LDH
 - ② (1) PRE-CONNECTED 200' OF 3.00" D.J. POLY HOSE TO A GATED WYE TO 200' OF 2.00" D.J. POLY HOSE
 - ③ 300' OF 3.00" D.J. POLY HOSE PRE-CONNECTED TO A BLITZ FIRE



ALUMINUM BODY

SIDE ROLL AND FRONTAL IMPACT PROTECTION

NOTE
DIMENSIONS SHOWN ARE APPROXIMATE AND ARE SUBJECT TO MINOR DEVIATIONS AS MAY OCCUR OR BE NECESSARY IN CONSTRUCTION.
MINOR DETAILS NOT SHOWN.

- 1. ONSPOT AUTOMATIC TIRE CHAINS TO BE PROVIDED AT REAR
- 2. ALUMINUM TREADPLATE EXTERIOR REAR WALL OF CAB
- 3. 5/8" STL SCUFFPLATE ON EACH CAB DOOR JAMB
- 4. MOUNTING BASES FOR ANTENNAS LOCATED PER SHOP ORDER
- 5. BATTERY CHARGER INDICATOR BEHIND DRIVER'S SEAT DISPLAYED THROUGH WINDOW
- 6. PERIMETER SCENE LIGHTS LOCATED PER SHOP ORDER
- 7. ANDOR LUMBAR AY-9500-000 DUAL L.E.D. LIGHT STRIPS IN THE HOSE BED
- 8. 5/8" STL PROTECTIVE GUARD FOR ROLL-UP DOORS ALL COMPARTMENTS
- 9. PIERCE L.E.D. DUAL COMPARTMENT LIGHT STRIPS LOCATED PER SHOP ORDER
- 10. PAINTED SHELF TRACKS LOCATED IN ALL COMPARTMENTS

- 11. ONE FULL WIDTH/DEPTH PAINTED ADJUSTABLE SHELF IN COMPARTMENT D2, D3, P1, P2, TWO IN D1 & P3
- 12. ONE FLOOR MOUNTED SLIDE-OUT TRAY IN COMPARTMENT D1 & P3
- 13. BOLT-IN PARTITION BETWEEN COMPARTMENTS D1 & P1
- 14. ALL FOLDING STEPS TO BE TRIDENT WITH INTEGRATED L.E.D. LIGHT UNLESS SPECIFIED
- 15. CIRCUIT BREAKER PANEL IN COMPARTMENT D2
- 16. STAINLESS STEEL FENDER CROWNS FRONT AND REAR
- 17. 20A, 120V DUPLEX RECEPTACLE ONE LOCATED IN CAB & COMPARTMENT P1, TWO LOCATED IN COMPARTMENT D1
- 18. ONE ADJUSTABLE SLIDEOUT TRAY IN D1 & P1
- 19. ONE RESPOND READY STORAGE IN D3

REV	DATE	BY	CH	ARROW	XT
22APR15	TES				
20MAR15	AMI	TWH			
02FEB15	TES	WKL			

TITLE	1500-D-1000G WATER W/30G FOAM CELL,152"FHFD COMPT D1 (3)XLAYS, DELUGE, GENERATOR,REEL, HYD LADDER RACK	DRAWN BY TES	06FEB15
FOR	WINFIELD COMMUNITY VFD INC. SYKESVILLE, MD.	CHECKED BY WKL	06FEB15
DWG NO.	28602AD	SHEET SIZE D	SHEET NO. 1 OF 1

JOB NO.	28602
SCALE	1:24
DATE	06FEB15
DRAWN BY	TES
CHECKED BY	WKL
SHEET SIZE	D
SHEET NO.	1 OF 1

MANUFACTURING INC.	
PIERCE	