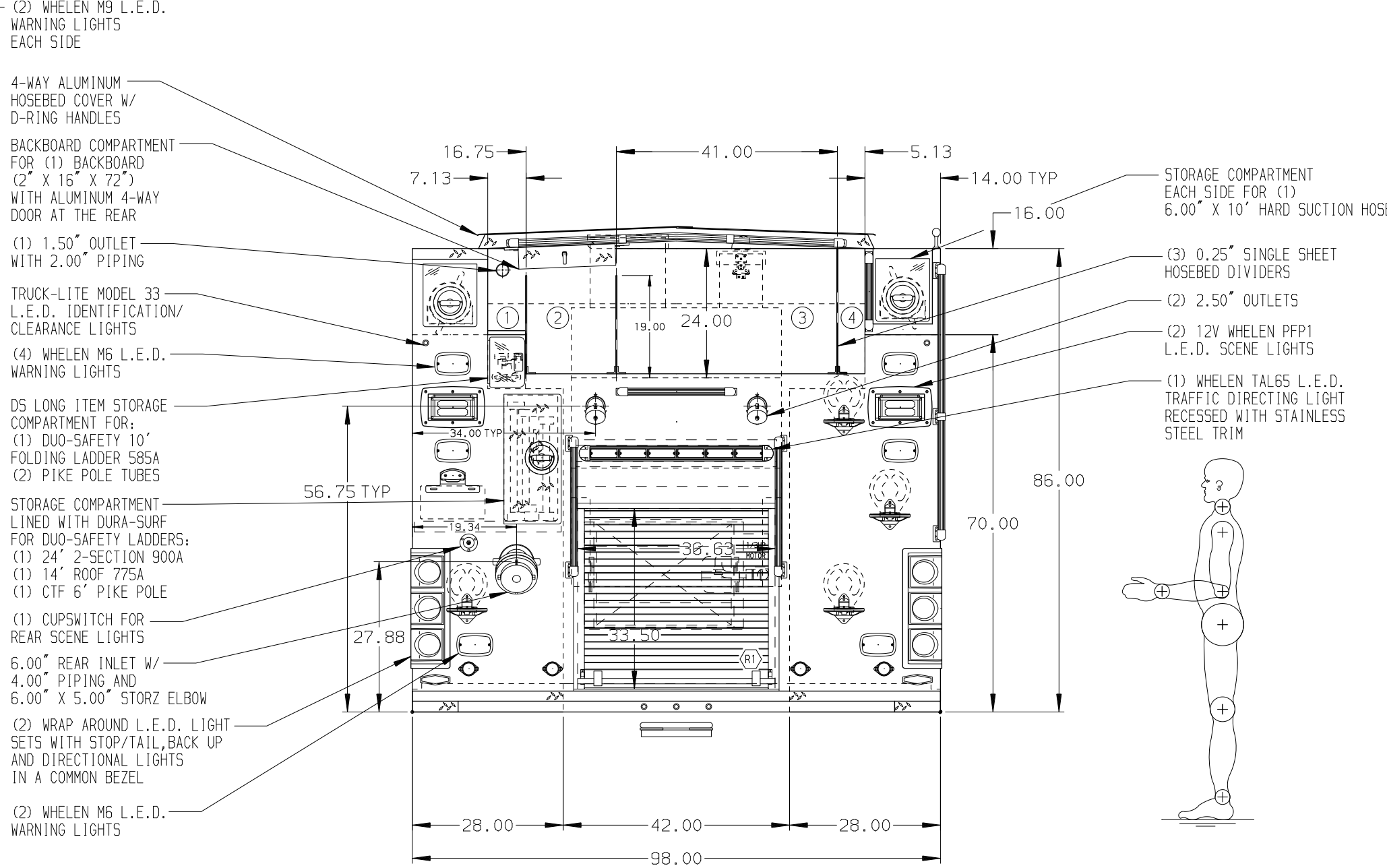
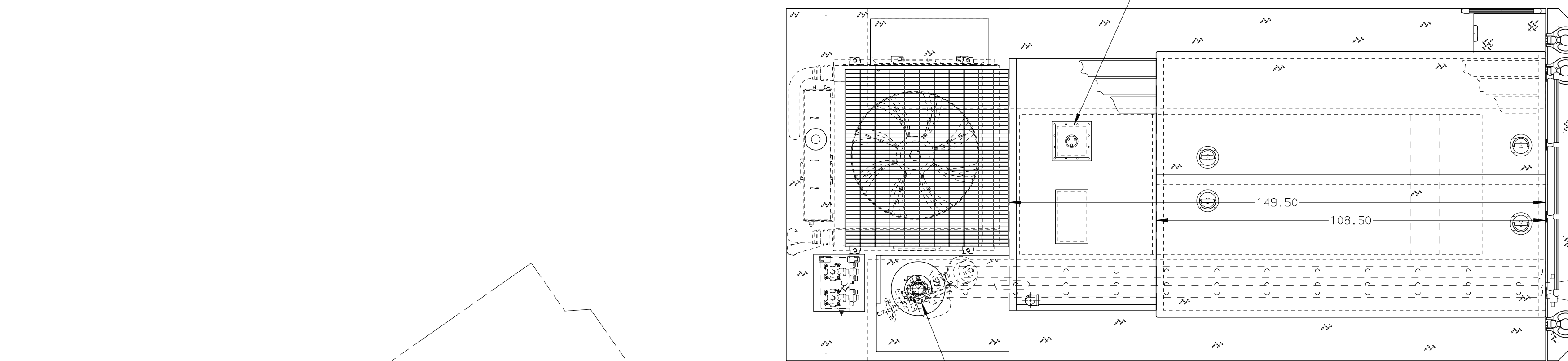


- HOSEBED CAPACITIES
- ① - 250' OF 2.00" D.J. POLY HOSE
  - ② - 500' OF 3.00" D.J. POLY HOSE
  - ③ - 1200' OF 5.00" D.J. POLY HOSE
  - ④ - 250' OF 2.50" D.J. POLY HOSE



ALUMINUM BODY

MAXIMUM O.A.H. 116.00"

SIDE ROLL & FRONTAL IMPACT PROTECTION

**NOTE**  
DIMENSIONS SHOWN ARE APPROXIMATE AND ARE SUBJECT TO MINOR DEVIATIONS AS MAY OCCUR OR BE NECESSARY IN CONSTRUCTION.  
MINOR DETAILS NOT SHOWN.

1. ALUMINUM TREADPLATE EXTERIOR REAR WALL OF CAB WITH FULL COVERAGE
2. 5/8" S/S PLATE AT EACH CAB DOOR JAMB
3. MOUNTING BASES FOR ANTENNAS LOCATED PER SHOP ORDER
4. BATTERY CHARGER LOCATED UNDER THE CENTER CONSOLE AREA
5. BATTERY CHARGE INDICATOR LOCATED NEAR D.S. SEAT RISER WITH BRACKET
6. PULL STRAP ON DOOR IN COMPARTMENTS D2, D3, P2, AND BOTH CROSSLAY DOORS
7. AMOR L.E.D. COMPARTMENT DUAL LIGHT STRIPS LOCATED PER SHOP ORDER
8. ONE ADJUSTABLE FULL WIDTH/FULL DEPTH SHELF IN COMPARTMENT D1 & D3; AND THREE IN P3
9. ONE FLOOR MOUNTED SLIDE-OUT TRAY IN COMPARTMENTS P1 & P3
10. ONE ADJUSTABLE SLIDE-OUT TRAY IN COMPARTMENTS P1 & P3

11. ONE VERTICAL BOLT-IN PARTITION BETWEEN COMPARTMENTS D1-R1 & P1-R1
12. ONE VERTICAL PARTITION IN COMPARTMENT P3
13. ALL FOLDING STEPS TO BE TRIDENT WITH INTEGRATED L.E.D. LIGHT UNLESS SPECIFIED
14. ONE 120V 6-PLACE RECEPTACLE STRIP IN COMPARTMENT P1
15. ONE SLIDE-OUT ROLLER ASSEMBLY LOCATED IN COMPARTMENT R1
16. ONE TILTING SLIDE-OUT TRAY LOCATED IN COMPARTMENTS P1 & P2
17. 5/8" S/S PLATE FENDER CROWNS FRONT AND REAR
18. ONE HANNAY BOOSTER REEL MODEL SRF32-19-21 LOCATED IN COMPARTMENT R1 WITH CAPACITY FOR 150' OF 0.75" BOOSTER HOSE
19. HUSKY 12 FOAM SYSTEM

20. AUTOMATIC TIRE CHAINS
21. AIR OUTLET W/ SHUT OFF VALVE LOCATED ON D5 PUMP PANEL
22. PIERCE LOGO MUDFLAPS FRONT AND REAR
23. PERIMETER SCENE LIGHTS LOCATED PER SHOP ORDER
24. TWO ON SCENE SOLUTIONS L.E.D. LIGHT STICKS LOCATED BELOW HOSEBED COVER

REV	DATE	BY	CH	DASH CF
26AUG14	COL	JGO	PIERCE	
29JUL14	COL	TWH	MODEL	

		JOB NO.	27909 01-03
TITLE		SCALE	DATE
FOR		DRAWN BY	10APR14
DWG NO.		CHECKED BY	22APR14
27909AD		SHEET SIZE	SHEET NO.
		D	1 OF 1