



ORION FANS

We'll make YOU a fan.

In partnership with



CBC

CARLTON-BATES COMPANY
A SUBSIDIARY OF WESCO DISTRIBUTION, INC.

Harsh Environment Fans and EC Fans with IP68-ATEX Certification

Orion's comprehensive line of harsh environment AC fans, DC fans, and accessories is designed to protect against dust, moisture, salt fog, salt spray, temperature changes, humidity, and more. Orion's harsh environment fans quickly integrate into process control, HVAC equipment and industrial designs.

Orion's new EC Fans include spark proof IP68-ATEX rated versions for applications involving explosive atmospheres or flammable gases. Developed for Zone 2 equipment, the implementation of IP68-ATEX fans into a design eliminates the possibility of an explosion or fire.

- IP55-rated fans
- Salt-fog fans
- All-metal fans
- IP68-ATEX certification



Low-Cost Accessories for Fans and Fan Trays

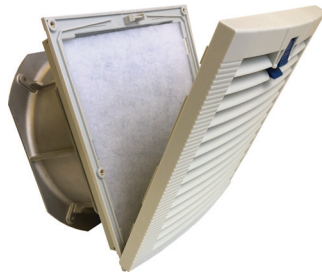


Orion's extensive line of affordable fan accessories allows customers to mix-and-match in order to complete the optimum cooling solution. From wire, mesh, plastic, and louvered fan guards to fan cords, filter fan kits, airflow monitors, cage nuts, PDUs, and thermal controllers, Orion Fans accessories complete any fan or fan tray application. Reusable specialty filters now available.

Low-Cost Louvered Filter Fan Kits

Orion delivers the industry's lowest cost filter fan kit consisting of a fan, louvered fan guard, filter, metal guard, and hardware. The filtered fan kit provides protection against dust, dirt, and moisture from entering industrial, electrical, and electronic cabinets. Depending on the fan used, these kits can be rated to IP54, IP55, IP56, and/or NEMA 12.

Now available with snap-on, slide and hinged louvered guards with UV protection.



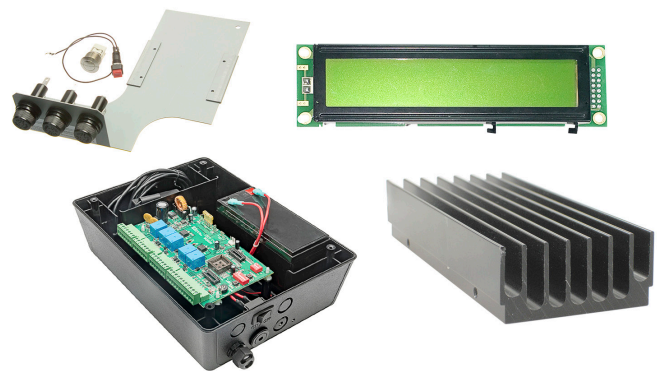
High Airflow Motorized Impellers

The Orion Fans family of AC & DC motorized impellers provides high airflows up to 1900 CFM and maximum static pressure of 5.4" H2O. The motorized impeller is designed for electronic cabinet, telecom, networking, air filtration and ventilation systems.

- IP55-rated
- Required capacitor is included with all AC impeller models
- 190mm - 400mm models in stock
- All DC models ship standard with Tachometer and PWM.



Making it Better for Less



Knight Electronics' OEM Division designs, sources, and manufactures electronic components, PC boards, cords and cables, subassemblies, extrusions, die castings, injection-molded plastics, turnkey and custom assemblies — all to your specifications. No risk, just high quality products at prices that keep OEMs competitive.

- Extrusions
- Electronic Components
- PC Boards and Subassemblies
- Turnkey Assemblies



ORION FANS

We'll make YOU a fan.



FAN QUESTIONS TO ASK:

What is your required fan voltage?

Orion AC Fans are available in 115V and 230V, or dual voltage 115/230V; most Orion DC Fans are available in 5V, 12V, 24V, and 48V. Other custom voltages available.

How much airflow do you need?

Airflow should be expressed in CFM, or cubic feet per minute. This will help to determine whether a customer needs a low, medium, or high speed fan. Fan speed will be expressed in RPM, or revolutions per minute.

Is fan noise a factor in your application?

Noise is expressed in decibels, or dB. Typically, fan models become louder as the airflow specification increases.

What is the size requirement of your fan frame?

Fans are often round or square, so the width and the height of the frame may be the same. The depth measurement of the fan may be important. Orion Fans lists all fan sizes in mm and standard measurement in our fan charts on the web and our hot-linked Product Selector Guide

- ▶ When using a **FAN**, may we quote the **FINGER GUARD** and **FILTER KIT**?
- ▶ When using a **POWER SUPPLY**, are you using a **FAN** to dissipate the heat?
- ▶ In an enclosure or cabinet, are you using a **FAN** or **FAN TRAY** for cooling?
- ▶ If you are using a **FAN TRAY**, do you need a **FAN SPEED CONTROLLER**, **TEMPERATURE CONTROLLER** or an **AIRFLOW MONITORING SYSTEM** to maintain operating temperature?
- ▶ In solid state lighting products, are you using a **FAN** to cool the **LED** assembly?

Orion Fans Products

AC Fans	Louvered Filter Fan Kits	Fan Accessories
DC Fans	Louvered Fan Guards	Reusable Specialty Filters
EC Fans	Dual Voltage Fans	Fan Cords
IP68 Fans	Fan Trays	Air Flow Monitors
Harsh Environment Fans	Smart Fans	Cage Nuts
High Static Pressure Fans	AC & DC Blowers	Controllers
Specialty Fans	AC & DC Motorized Impellers	Power Distribution Units