



+map
INTERNATIONAL

2016

Annual Report

**A Year in Review:
The Power of
Health & Hope**

2016

Annual Report

TABLE OF CONTENTS

	Page
MAP Mission Statement	3
Message from Board Chair	4
President & CEO Message	5
Global Health Statistics	6
Awards & Recognitions	7
MAP's Work	8-9
Global Programs.....	10-11
2016 at a Glance	12-13
Global Shipping Report	14-15
Annual Financial Stmt. FY16	16
Health & Hope in Action.....	17
Disaster Relief	17
Top Pharmaceutical Partners.....	18
Top Mission Partners	19



Church of Eleven 22, Haiti
Cover Photo: MAP Indonesia

CRNA, Philippines



MAP Indonesia

MAP Bolivia



MAP International Mission Statement:

MAP International is a global Christian health and relief organization that partners with people living in conditions of poverty to save lives and develop healthier families and communities. Recognized for our 99% efficiency rating, we respond to the needs of those we serve by providing medicines, preventing disease and promoting health to create real hope and lasting change. Our mission is to advance the Total Health of people living in the world's poorest communities.



MAP Ghana

MESSAGE FROM THE BOARD CHAIRMAN



MAP Ecuador



MAP Bolivia

PRESIDENT AND CEO ANNUAL MESSAGE

2016 Board of Directors

Philip J. Mazzilli
Chairman

Steve Stirling
President and CEO

Mary Jane Lindholm
Vice-Chairman

Daniel D. Phelan
Vice-Chairman

Kenneth Gustavsen
Secretary

Mark R. Bell
Treasurer

James Barfoot

Cynthia Lynn Blandford

Allen Craig

Dale Herzog

Marc Hungerford

Deborah A. McFarland

Laurence Phelan

Susan Roeder

Robert Rowan

Dr. James Sirleaf

Phillip H. Street

2016 Senior Leadership

Dr. Julien Ake, VP Africa Programs

Jodi Allison, VP Global Giving

Dan Reed, VP CFO

Dr. Jose Miguel Deangulo, Director
Latin America Programs

Dear Friend of MAP,

As a former corporate CFO, I may be fonder of numbers than most people. This year, MAP's numbers—by any measure—are very, very good. With a record-setting \$485 million in medicines delivered, a dramatic improvement in our balance sheet, and another clean audit (our auditors tell us this is achieved by less than 5 percent of more than 1,000 nonprofits they audit), we can all celebrate.

MAP is a Christian health and disaster response organization, and, of course, we first give thanks to God for this remarkable year. But I have to also thank our CEO, Steve Stirling, and the amazing MAP staff who have worked tirelessly to respond to needs around the world. Their commitment is truly extraordinary.

And I want to thank our thousands of donors and dozens of partners who make this work possible.

Being chairman of MAP International's board is one of the great honors of my life. More than ever, I understand that numbers are especially exciting when they count lives saved, and that's what the work of MAP is all about.

More than once this year, I've shed a tear as I listened to stories of men, women and children who were suffering until MAP was able to reach them with life-changing medicine.

On behalf of the entire board of directors, I want to sincerely thank you for your part in this mission. To touch the lives of people in need around the world motivates us all to invest even more in MAP International.

Sincerely,

Phil Mazzilli
Board Chairman

Dear Friends,

Becoming MAP International's President and CEO has been one of the greatest privileges and joys of my life. In presenting this year's annual report, I want you to know that I am both incredibly proud of the efforts of our staff and humbled by the generosity of our donors who make what we do possible.

During my years in both business and nonprofits, I set many ambitious goals. But last year, we set goals for MAP that were very ambitious. We knew the needs were great and we were determined to find ways to help more people than ever find both health and hope.

I am pleased to tell you that we not only met these goals, but by God's grace and with donor support, we exceeded them. More than 10,270,000 lives were impacted by MAP's work in 2016! Additionally, during times of natural disasters, MAP was able to provide more than \$6,600,000 in medicines and medical supplies, notably in response to the Ecuador earthquake and Zika virus in Latin America.

Letters have poured in this year from doctors, thanking us for life-saving antibiotics, oral rehydration salts, sutures, and so much more. We've also received heartfelt thanks from individuals whose lives have been changed and saved by medicines delivered by MAP. Although we can't share all of the stories with you, please look at the smiling faces and read some of the stories in the annual report, knowing that these are just some of the people behind the numbers.

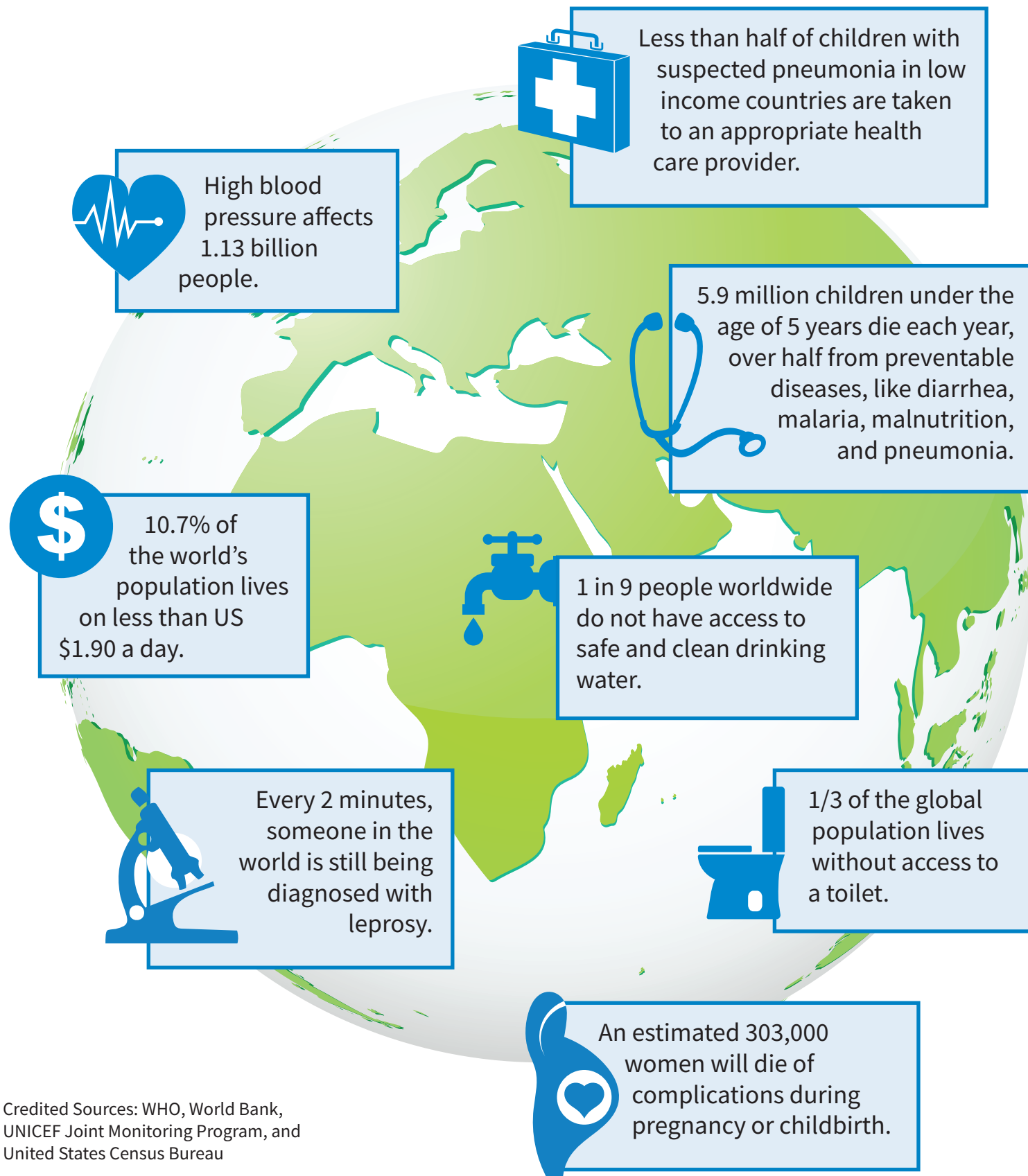
Please take a moment to look at our list of top pharmaceutical partners on page 18. These are the companies who donate the medicines that are so desperately needed. They are truly our partners in this important work.

We have amazing donors—individuals, churches, foundations, businesses, even student groups—who have contributed the funds that make it possible for us to process, store, pack and deliver these medicines to people in need. We also thank our mission partners who deliver the medicines and supplies to millions of people around the world.

With this annual report, we celebrate all of your efforts to bring health and hope to so many around the world. We are so very grateful for all you have done for MAP this year and we are grateful to God for allowing us to be instruments of healing in a hurting world.

With gratitude,

Steve Stirling
President and CEO



Credited Sources: WHO, World Bank, UNICEF Joint Monitoring Program, and United States Census Bureau

MAP International's sound fiscal management practices and commitment to accountability and transparency have earned it numerous awards and recognitions in 2016. For the fourth consecutive year MAP has earned perfect scores in Financial Health, Accountability and Transparency from Charity Navigator. For the second year in a row CNBC named MAP #2 among the "Top 10 Charities Changing the World." MAP is committed to bringing health and hope to children and families with the most need in over 100 countries around the world.



MAP International, Dominican Republic

MAP's programs focus on:

- Essential Medicines
- Disaster Relief & Disease Management
- Community Health Development



**Medicines
Delivered:**
\$485,051,174



**Disaster
Relief:**
\$6,658,871



**People
Served:**
10,270,009



Countries:
102

Global Programs Update



MAP Cote d'Ivoire

MAP's Global Programs

In 2016, MAP's community health development work reached more than 1.5 million children and families in Bolivia, Kenya, Cote d'Ivoire, Uganda, Liberia, Ghana, Ecuador, and Indonesia. MAP promotes community health development through three core program areas: Neglected Tropical Diseases (leprosy, Buruli ulcer, Chagas, yaws, rabies, lymphatic filariasis, soil transmitted helminthiases, and Guinea worm); Maternal, Child Health and Protection; and Water, Sanitation and Hygiene. The international staff works in partnerships with local churches, schools and the Ministries of Health in each country.

Water, Sanitation and Hygiene (WASH): People Served 618,948

Water, Sanitation and Hygiene (WASH) are critical components of health in villages across the globe. Access to clean water is a basic human right and a foundation for improved health. Through latrines and hand washing stations, education and improved drinking water sources, MAP has helped improve the health conditions for many communities.

In Kenya, MAP staff worked with volunteers like Mama Alice Otieno so that three villages could be declared Open Defecation Free (ODF).

Nana Frimpong, the chief of Kobedi community in Ghana, could not hide his joy at access to safe and potable water. His community recently installed a mechanized borehole for the community with help from MAP. Having access to clean water has helped students report to school on time since in the past the children walked as much as 30 minutes before they could have access to clean water. Also, members of the Kobedi community no longer suffer from infections related to water borne illnesses. Chief Frimpong said, "The Kobedi community will forever be indebted to MAP for providing us with clean water."



MAP Kenya

Neglected Tropical Diseases (NTDs): People Served 732,019

Neglected Tropical Diseases affect more than one billion people worldwide. These diseases primarily affect people living in conditions of poverty with poor sanitation and limited access to clean water. Left untreated, these diseases can cause disfigurement and permanent disability. MAP works with partners, local Ministries of Health and communities to prevent and treat NTDs.

The World Health Organization reports thousands of Buruli ulcer cases each year. With 50% of Buruli ulcer victims under the age of 15, the disease is particularly heartbreaking. Erica Marfo, from Ghana, was six years old when she was diagnosed with Buruli ulcer. Thanks to MAP she was able to complete multi-drug therapy and receive a skin graft to repair damage from the disease. Erica is living a happy life now, and hopes to become a doctor in the future so she can help touch the lives of others living with disease.

More than six million people worldwide are infected with Chagas, a life-threatening disease discovered more than a century ago. Caused by a bug that lives in the walls of homes, this disease disproportionately affects lower-income families, primarily in Latin America. Hortensia Fuentes, from the Collpampa



MAP Ghana

Total Number of People Served in MAP Country Offices:

Africa Services TOTAL: 1,456,157 **Indonesia: 4,862**

- Kenya: 48,749
- Uganda: 36,034
- Liberia: 279,764
- Ghana: 37,877
- Cote d'Ivoire: 1,053,733

Latin America TOTAL: 66,188

- Bolivia: 31,988
- Ecuador: 34,200

Total People Served: 1,527,207

community in Bolivia, recently participated in a rapid test campaign hosted by MAP. Her test came back positive. Her first reaction was fear and confusion, but MAP staff members were there to provide her with immediate support. Frequent follow-up visits at her home have been conducted and she is already in her seventh week of treatment. MAP is now working to improve the conditions of her home to avoid reinfection.

Maternal and Child Health and Protection (MCHP): People Served 127,795

MAP's comprehensive approach to improving the lives of mothers and their children includes integrated care during pregnancy and after birth for mothers and their babies. MAP works with families to address traditional health concerns to reduce maternal and child mortality and morbidity as well as other social, economic, environmental, and emotional concerns that can impact the development and wellbeing of mothers and children. MAP is dedicated to helping mothers give birth to healthy children who can thrive and reach their full potential. Dr. Jose Miguel Deangulo, Latin America Director for MAP said, "Learning to take care of the babies in a comprehensive way not only changes the history of that family, but the history of the community."

Maria Mamani from the Cochabamba community in Bolivia was scared and confused when she became pregnant at a young age. She had heard about MAP's maternal and child health programs and became involved by attending prenatal care training and checkups. "The different things I learned and the self-empowerment I was experiencing brought me hope and meaning in my life," she said. Today, Maria is enjoying raising her healthy baby boy and still attending regular checkups and training that MAP staff provide. "I never thought that my life could be so joyful."



MAP Ecuador



MAP Bolivia

Other Health Promotion Activities: People Served 48,445

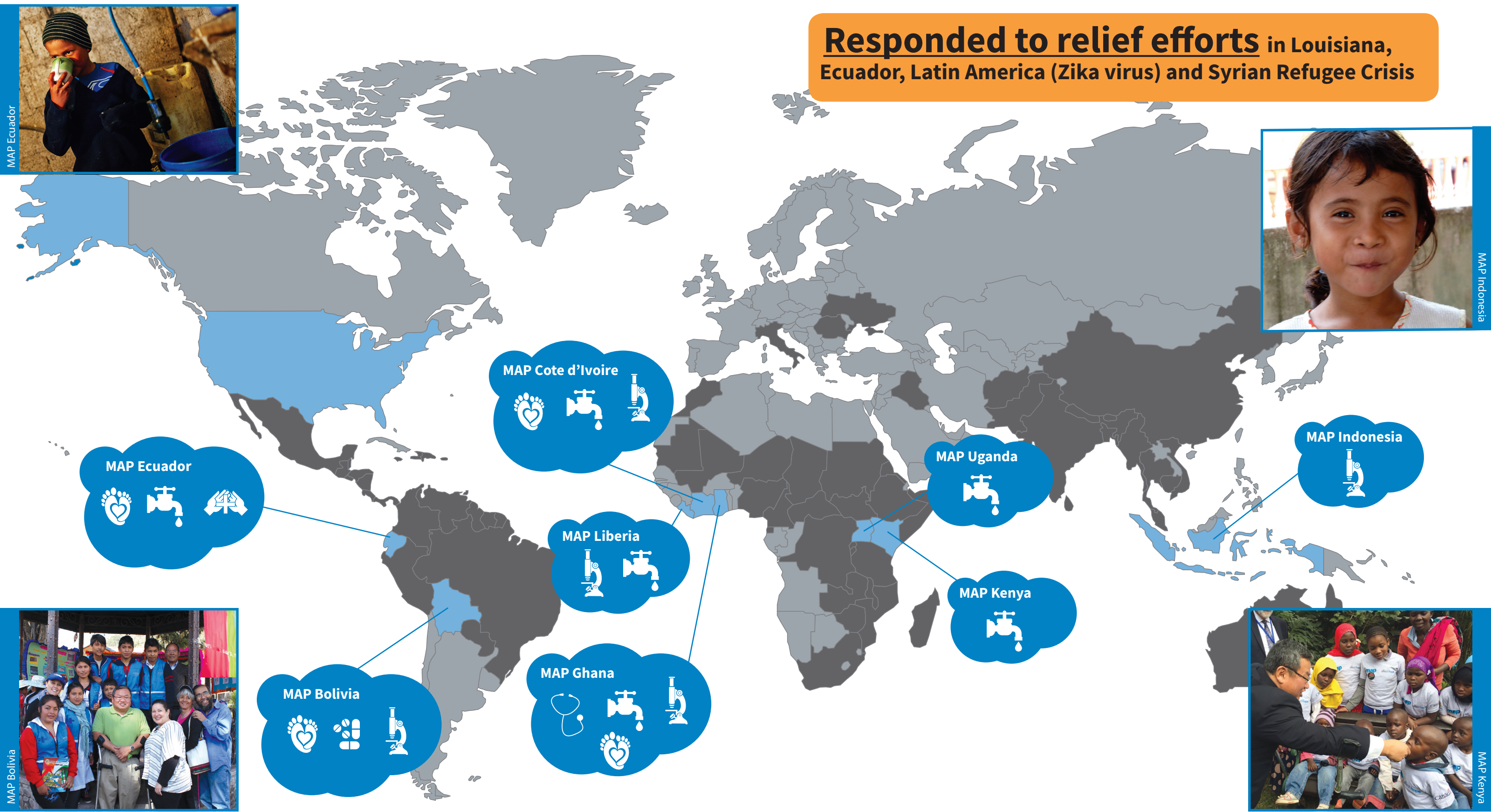
MAP's community health development work also includes sustainable agriculture and food security, nutrition, education, and the provision of medicine. MAP's participatory approach includes involving people and communities in the process of determining their own barriers to health and empowering them to address those barriers using their own unique gifts.

MAP Indonesia works with fishermen who live in Hili Amonio, a sub-village of Baluta village. Ama Kanurnia Duha is one of the fishermen who received a gillnet and training to help him increase the number of fish he was able to catch and sell. Ama Karunia said, "The gillnet and training has really helped me catch more fish, now I have more fish to sell, and I am able to provide for my family." Ama Karunia was able to sell his catch not only in his village, but expand to other villages in the area. He now earns more money so he can afford an education for his four children.



MAP Indonesia

Responded to relief efforts in Louisiana, Ecuador, Latin America (Zika virus) and Syrian Refugee Crisis



MAP Ecuador



MAP Indonesia



MAP Bolivia



MAP Kenya

Global Shipping Report

Total: \$485,051,174



Afghanistan.....	\$16,827
Angola.....	\$9,095
Armenia.....	\$280,156
Australia.....	\$26,274
Bahamas.....	\$58,912
Bangladesh.....	\$183,979
Belize.....	\$382,407
Benin.....	\$2,645
Bhutan.....	\$46,353
Bolivia.....	\$120,134
Brazil.....	\$1,176,961
Burkina Faso.....	\$379
Burma.....	\$73,047
Burundi.....	\$30,296
Cambodia.....	\$249,781
Cameroon.....	\$360,124
Chad.....	\$64,090
China.....	\$277,936
Colombia.....	\$123,196
Congo.....	\$864,664
Costa Rica.....	\$251,046
Croatia.....	\$206,446
Dem. People's Rep. of Korea.....	\$561,625
Dem. Republic of Congo.....	\$1,027,071
Dominica.....	\$345
Dominican Republic.....	\$70,003,946

Ecuador.....	\$2,203,312
Egypt.....	\$194,604
El Salvador.....	\$27,641,379
Ethiopia.....	\$2,300,633
Fiji.....	\$25,476
Gabon.....	\$24,657
Gambia.....	\$45,477
Gaza, West Bank.....	\$39,716
Ghana.....	\$504,246
Greece.....	\$2,602
Guam.....	\$19,877
Guatemala.....	\$131,594,981
Guyana.....	\$14,380,565
Haiti.....	\$75,482,237
Honduras.....	\$62,092,310
India.....	\$376,798
Indonesia.....	\$21,896
Iraq.....	\$34,253
Israel.....	\$6,036
Italy.....	\$261,886
Ivory Coast.....	\$312,269
Jamaica.....	\$807,988
Jordan.....	\$1,008,915
Kenya.....	\$590,138
Kiribati.....	\$117
Kyrgyzstan.....	\$16,641

Lebanon.....	\$7,536
Lesotho.....	\$345
Liberia.....	\$3,242,524
Madagascar.....	\$38,184
Malawi.....	\$118,678
Mali.....	\$7,776
Mexico.....	\$684,046
Moldova.....	\$131,479
Mongolia.....	\$64,773
Mozambique.....	\$13,295
Namibia.....	\$11,934
Nepal.....	\$3,319,228
Nicaragua.....	\$5,248,693
Niger.....	\$23,270,546
Nigeria.....	\$13,169,507
Pakistan.....	\$1,554,739
Panama.....	\$220,720
Papua New Guinea.....	\$69,489
Paraguay.....	\$64,922
Peru.....	\$342,908
Philippines.....	\$4,348,239
Romania.....	\$3,777,726
Rwanda.....	\$148,078
Sao Tome and Principe.....	\$1,423
Senegal.....	\$6,478,710

Serbia.....	\$366,640
Sierra Leone.....	\$18,781,084
Slovenia.....	\$15,512
Somalia.....	\$20,290
South Africa.....	\$37,811
South Sudan.....	\$928,469
St. Lucia.....	\$113,934
St. Vincent.....	\$29,575
Swaziland.....	\$92,938
Tanzania.....	\$233,150
Thailand.....	\$342,384
Togo.....	\$143,805
Tonga.....	\$9,138
Trinidad and Tobago.....	\$14,374
Tunisia.....	\$10,763
Turkey.....	\$39,435
Uganda.....	\$271,413
Ukrainian SSR.....	\$159,575
United States.....	\$46,888
Venezuela.....	\$122,996
Vietnam.....	\$129,763
Zambia.....	\$97,452
Zanzibar.....	\$293,290
Zimbabwe.....	\$28,206



MAP Cote d'Ivoire



MAP Jordan



MAP Ecuador



MAP International, Guatemala

Statement of Financial Activities

Support and Revenue

	2016	2015
Contributions	\$8,161,405	\$9,697,519
Donated inventory	\$595,566,601	\$535,104,873
Government grants	\$0	\$0
Donated securities & other assets	\$72,485	\$121,518
Handling charges & service fees	\$2,346,522	\$2,140,100
Investment income	\$62,971	\$(22,504)
Other revenue	\$281,096	\$30,866
Total Support and Revenue	\$606,491,080	\$547,072,37

Expenses

Program Services

Essential medicine distribution	\$454,873,905	\$439,493,322
Disaster & disease management	\$6,658,871	\$22,015,018
Community health development	\$54,583,647	\$22,048,819
Total Program Services	\$516,116,423	\$483,557,159

Supporting Activities

General and administrative	\$543,549	\$597,936
Fundraising	\$1,913,424	\$2,393,570
Total supporting activities	\$2,456,973	\$2,991,506
Total Expenses	\$518,573,396	\$486,548,665
Change in Net Assets	\$87,917,684	\$60,523,707

Net Assets, Beginning of the Year	\$139,584,179	\$79,060,472
Net Assets, End of the Year	\$227,501,863	\$139,584,179



MAP International, Dominican Republic

“I didn’t know that by partnering with MAP our mission trip would have so much more impact,” said Pastor Donna Marsh. “It took the impact of our mission trip to a new level entirely. We were able to really meet a need in the community because of the medicines we brought with us.”

Pastor Donna Marsh - National Presbyterian Church in Washington, DC

“A few moments of our time, coupled with appropriate medication, could have such a profound impact on that child’s future...I can’t thank you enough for the medications.”

Dr. Karen Sedlacek, Mission Partner (Kenya)



MAP International, Guatemala

“We are very grateful for helping this very poor community,” said nurse Leleh. “These medicines are helping a lot of people and bring so much hope. Even just one bandage comes in the name of Christ.”

Nurse Leleh - Heart of Love Clinic, Guatemala (Corazou’de Amor Clinica Medica)



MAP Kenya



Disaster Relief



MAP Ecuador

In 2016, MAP responded to the Ecuador earthquake, Louisiana floods, Zika virus, and provided Syrian refugees in Jordan and Lebanon with medical aid. With more than \$6.6 million of aid delivered through partnerships, MAP brings resources to affected areas, often in the first hours or days following a disaster. Recognized as one of CNN’s Impact Your World charities and Charity Navigator’s Choice Relief charities, MAP International remains a global leader in disaster response.



Scott Carey, Jordan

Top Pharmaceutical Partners



MAP Bolivia



MAP Liberia



MAP Cote d'Ivoire



MAP International, Guatemala

Headquarters

MAP International
4700 Glynco Parkway
Brunswick, GA 31525

Atlanta

MAP International
2295 Parklake Dr NE
Suite 325
Atlanta, GA 30345

MAP Bolivia

MAP Cote d'Ivoire

MAP Ecuador

MAP Ghana

MAP Kenya

MAP Liberia

MAP Uganda

MAP Indonesia
Implementing Partner

www.map.org

1.800.225.8550

+map
INTERNATIONAL



The K2 Church, Swaziland