

Vert-I-Pak®

Single Package Vertical Air Conditioners

A better solution indoors

Compact units install into a small utility closet, completely out of sight

Quiet 'Free Floating' chassis design

Chassis installs into a gasketed wall sleeve reducing the risk of vibration noise that can transfer into the guestroom

Better outdoor aesthetics

Single package design eliminates unsightly outdoor condensing units

Outstanding warranty

Category-leading warranty coverage



FRIEDRICH

1 8 8 3

THE EXPERTS IN ROOM AIR CONDITIONING

Vert-I-Pak®

A BETTER SOLUTION FOR HOSPITALITY AND MULTI-FAMILY



Ducted and closet-mounted, Vert-I-Pak eliminates the need for multiple through-the-wall units. The Vert-I-Pak unit is installed out of sight, so guests enjoy a more attractive, more homelike appearance.

BETTER AESTHETICS

Indoors

The unit is installed out of sight, so your guests will only see a wall thermostat.

Outdoors

Packaged unit eliminates the clutter of outdoor condensing units and the sleek architectural grille is available in custom colors to match the building's exterior.



A QUIET, ENERGY EFFICIENT OPTION FOR SUITES, EXTENDED STAY PROPERTIES, ASSISTED LIVING, AND STUDENT HOUSING

Heat Pump

COOLING

9400–23000 Btu

Up to 10.4 EER

REVERSE HEATING

8400–20000 Btu

All 3.0 COP

AUXILIARY ELECTRIC HEATING

8530–34121 Btu

ASHRAE 90.1-2013 Compliant Models Available

All models above are heat pump systems. Cooling only models may be available by special request. Contact your local Friedrich representative for more details.



VERT-I-PAK IS A SUPERIOR PRODUCT

Advanced features you'll find on Friedrich Vert-I-Pak

1. Floating chassis design slides into a wall plenum and is held firmly in place by a sealing gasket, reducing noise from vibration transfer.
2. ½ inch foil-backed insulation added on the inside of the chassis to reduce sound transmission into the guest room.
3. Efficiencies above industry standards with EERs up to 10.4.
4. Condensate removal system uses slinger ring technology to cool the coil and increase efficiency.
5. Dynamically balanced blower with large, vibration-absorbing motor mounts for smooth and quiet operation.
6. Patented telescoping plenums (accessory) easily adapt to more installations.
7. 5 year limited warranty*; 1 year labor warranty.

* See warranty documentation for details.

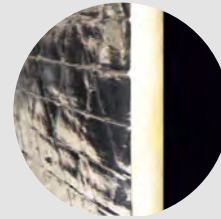
What you'll find on many competitors' products

1. Chassis is screwed into the wall plenum. Metal-on-metal contact transfers vibration, increasing operating noise under typical conditions. Noise is transferred through the walls and into the room.
2. No insulation on the unit to reduce noise transmission into the guest room.
3. Hard plastic feet on the unit base which are less durable and transfer harsh vibration noise.
4. Different plenums needed based on varying wall depths.
5. No labor warranty.

ENGINEERED FOR QUIETER PERFORMANCE

Friedrich's 'Free Floating' chassis design and superior insulation help to eliminate vibration noise

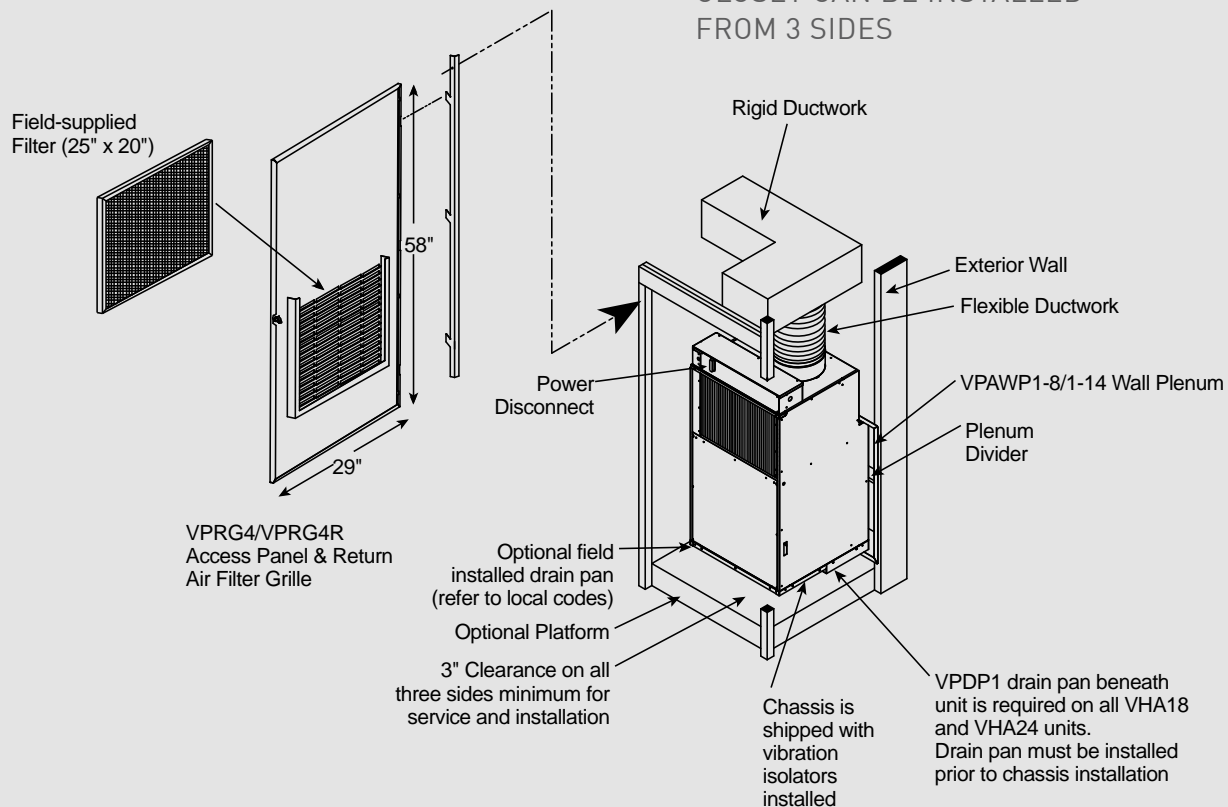
The chassis slides into the wall plenum and a gasket firmly seals the chassis to the patented telescoping plenum. This eliminates vibration noises that are transmitted into the room in competitors' metal-on-metal fixed installations. Extra thick, vibration-absorbing rubber grommets mounted on a durable base that is engineered for structural and acoustic integrity.



Foil-backed, 1/2" insulation blanket inside the cabinet reduces sound transmitted into the guest room

TYPICAL VERT-I-PAK® INSTALLATION

ACCESS DOOR OR PANEL TO CLOSET CAN BE INSTALLED FROM 3 SIDES



VERT-I-PAK® ADVANTAGES

A better heating and cooling option inside and out

- **Eliminates the clutter** of outdoor condensing units and the need for vandalism barriers.
- Completely **self-contained**
- **No refrigerant lines** running from floor to floor
- **Fast, easy replacement** keeps spaces livable

Improved guest comfort

- **Individually** controlled
- Vert-I-Pak Heat Pump models include back up auxiliary electric heat.
- **Duct air specifically where it's needed**, not just on the outside wall
- 2-speed fan with **constant fan option** on Friedrich RT6, RT6P and WRT1 thermostats

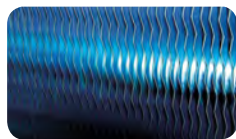
FEATURES

Reliable and durable

- PSC **permanently lubricated motor** for low maintenance and maximum efficiency
- Engineered drain pan **won't rust**, eliminating the risk of unsightly rust stains from condensation on the building exterior
- Painted, **18-gauge galvanized steel** cabinet resists corrosion
- Standard safety power disconnect
- Electronic control panel on unit for **easy diagnostics and servicing**
- **Every unit is 100% run tested** prior to shipment



DIAMONBLUE
Advanced Corrosion Protection®



Protects the outdoor coil against deterioration and extends the life of the unit especially in harsh coastal environments.

A better choice than whole building solutions

- **Lower installed cost**
- **Independent metering** (no need to prorate for multi tenant applications)
- **Individual temperature setpoint** (one unit can heat and others can cool)
- **Less risk**, with a whole building system, spaces may become uninhabitable until the system is repaired or replaced
- Vert-I-Pak can be **easily accessed** for maintenance or replacement

Easy installation

- Can be installed from any interior side (front, right or left)
- **Ductable** to multiple rooms
- **Compact and lightweight**, weighs as little as 114 lbs.
- Installation does not require an HVAC technician
- **Prewired**, charged and piped
- Units are **ready to install** with only electrical hook up needed
- 10" crimped and beaded duct-collar ready to attach flex duct
- Patented **telescoping wall plenums** adjust to fit varying exterior wall thicknesses
- Primary condensate removal system provided through 3/4" pipe fittings for more placement options
- Secondary overflow from primary drain*
- **Central desk control** ready
- 24-volt remote wireless or wired thermostat ready

Warranty and Support

- **Industry leading warranty** features 1 year full warranty on parts and labor and 5 year limited warranty.
- **Nationwide service network and U.S. based Friedrich expert technical team** ensures you get fast, knowledgeable service.



Energy management thermostats available

- **Wired and wireless** thermostats
- Integrated **motion and thermal** occupancy sensor
- Auto changeover
- 5 distinct energy presets
- Comprehensive remote management capability**

* 18000 and 24000 Btu models use secondary gravity-fed drain. ** Energy management capability requires purchase of additional hardware and service fee

Save big on energy without compromising guest comfort with FriedrichLink® thermostats, the advanced energy management solution for Friedrich Vert-I-Pak®



Real Time Motion and Thermal Occupancy Sensor

Integrated Occupancy Sensor uses a combination of **motion and thermal sensing technologies** for accurate occupancy detection at all times-no need to install additional devices such as door switches or sensors.

Wired or Wireless Installation

Wired or wireless connectivity with extensive configuration options deliver full compatibility and easy integration with virtually any packaged HVAC system.

5 Energy Savings Presets

5 distinct energy saving modes make it easy to choose the optimal energy saving settings for any property.

Remote Management*

Web-based remote management provides expansive solutions for remote monitoring and configuration from any computer connected to the Internet.

Built-in Wireless Networking enables remote management without using or interfering with property's existing wireless infrastructure. True mesh networking eliminates the need for additional networking equipment such as signal repeaters or multiple data collection boxes.



Friedrich's **EMRT2** and **EMWRT2** thermostats use real-time motion and thermal occupancy detection to save energy.

When the room is unoccupied, the thermostat automatically adjusts the temperature to eliminate unnecessary heating and cooling.

Monitor room status and see the operation, occupancy and energy efficiency status of each room.

*Requires an optional "Online Connection Kit" and a one-time license fee. Optional Humidity Control Feature available through Remote Management. See accessories on opposite page.

Advanced Energy Saving Features

Fully configurable energy saving modes maximize energy savings without compromising guest comfort.

Temperature setback automatically adjusts the temperature when the room is unoccupied in order to save energy.

Temperature recovery calculates the setback temperature so that the desired temperature can be restored within specified time.

Setback optimization continuously monitors temperature recovery rate in the room and adjusts setback temperature to maximize energy savings.

Setback limits allow maximum and minimum room temperature to be set when the room is unoccupied.

Setpoint limits prevent guests from setting room temperature to extreme, energy-wasting levels.

Room status displays operation, occupancy and energy efficiency status of each room.

Room detail displays temperature and occupancy changes in a room.

Energy reports monitor energy use and can even evaluate the performance of energy saving features.

Intuitive interface makes it easy to apply different settings to different rooms.

User management allows configuration of custom access permissions and alert notification settings for different users.

Built-in diagnostic tools automatically send email alert notifications to hotel staff.



FriedrichLink® For Lodging

OPTIONAL ACCESSORIES

ARCHITECTURAL LOUVER

VPAL2 and VPSC2

Extruded aluminum grille that attaches to the outdoor section of the wall plenum. Takes in fresh air and returns condensed air. VPSC2 can be ordered in custom colors.

DIMENSIONS: 25⁹/₁₆" W x 31¹/₁₆" H



VPAL2



VPAWP1-8

WALL PLENUM (Required)

VPAWP1-8, VPAWP1-14

Two-part sleeve that telescopes in and out; sits inside the exterior wall penetration.

VPAWP1-8 telescopes from 5¹/₂" – 8"

VPAWP1-14 telescopes from 8" – 14"

DIMENSIONS: 24¹/₈" W x 30³/₈" H

CUTOUT DIMENSIONS: 24⁵/₈" W x 30⁷/₈" H

RETURN AIR GRILLE/ACCESS PANEL

VPRG4/VPRG4R

Hinged panel allows access to unit and return air filter.

A field-supplied filter (25" x 20") should be mounted on the inside grille. Panel can be mounted with return air openings high or low on the door for optimum sound attenuation.

DIMENSIONS: 29" W x 58" H

CUTOUT DIMENSIONS: 27" W x 55³/₄" H



VPRG4/
VPRG4R

FIRST COMPANY SLEEVE ADAPTER

VPASA1

Single piece, welded adapter allows retrofit into existing First Company® SPXR-series single package vertical unit wall sleeve and louver. Easily connects to Friedrich chassis. Only compatible with Friedrich's smaller sized VPAK 9k and 12k units.



VPASA1

SINGLE STAGE THERMOSTATS

RT6P

Wired, single stage, wall-mounted programmable thermostat has two fan speeds and backlight. Controls Friedrich VERT-I-PAK.

RT6

Wired, single stage, wall-mounted digital thermostat has two fan speeds and backlight. Controls Friedrich VERT-I-PAK.

WRT1

Wireless, single stage, wall-mounted digital thermostat has two fan speeds and backlight. Controls Friedrich VERT-I-PAK.



RT6, RT6P



WRT1

ENERGY MANAGEMENT THERMOSTATS

EMRT1, EMRT2

Wired thermostat has occupancy sensor.

EMWRT1, EMWRT2

Wireless thermostat has occupancy sensor.

EMOCT

EMRAF

EMRHCF

Online connection kit. Remote access fee. Remote humidity control fee.



EMRT1, EMWRT1

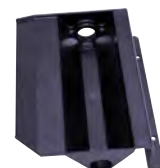


EMRT2, EMWRT2

DRAIN PAN (Required for large chassis models)

VPDP1

For VHA18 and VHA24 models. May be installed prior to chassis for easy installation/removal.



VPDP1

SPECIFICATIONS

	★	★	★	★	★	★	★	★	★	★	★	★	★	★	★	★	★	
MODEL	VHA09K	VHA09R	VHA12K	VHA12R	VHA18K	VHA18R	VHA24K	VHA24R	VHA24K	VHA24R	VHA24K	VHA24R	VHA24K	VHA24R	VHA24K	VHA24R	VHA24K	VHA24R
COOLING DATA																		
COOLING BTU	9400/9400	9400	12200/12000	12400	18200/18000	18000	23000/22800	22500										
POWER (W)	905/905	915	1220/1200	1240	1825/1800	1815	2527/2505	2475										
EER	10.4/10.4	10.3	10.0/10.0	10.0	10.0/10.0	10.0	9.1/9.1	9.1										
SENSIBLE HEAT RATIO	0.76	0.77	0.75	0.75	0.66	0.70	0.70	0.70										
HEATER SIZE (kW)	2.5/3.4/5.0	2.5/3.4/5.0	2.5/3.4/5.0	2.5/3.4/5.0	2.5/3.4/5.0	2.5/3.4/5.0	2.5/3.4/5.0/7.5/10.0	2.5/3.4/5.0/7.5/10.0										
HEAT PUMP DATA																		
REVERSE HEATING BTU	8400/8400	8500	11100/10900	11300	16800/16400	16700	20000/20000	20000										
COP @ 47F	3.0/3.0	3.0	3.0/3.0	3.0	3.0/3.0	3.0	3.0/3.0	3.0										
HEATING POWER (W)	830/830	820	1075/1050	1095	1650/1600	1620	1953/1953	1950										
HEATING CURRENT (A)	4.0/4.0	3.2	5.0/5.3	4.5	7.8/8.3	6.9	8.5/9.4	8.1										
ELECTRICAL DATA																		
VOLTAGE (1 PHASE, 60 HZ)	230/208	265	230/208	265	230/208	265	230/208	265										
VOLT RANGE	253-197	292/239	253-197	292/239	253-197	292-239	253-197	292-239										
COOLING CURRENT (A)	4.3/4.3	3.5	5.7/5.9	5.1	8.6/9.2	7.6	10.9/10.6	9.7										
AMPS L.R	21.0	21.0	30.0	30.0	42.0	42.0	46.0	46.0										
AMPS F.L.	3.5	3.5	4.8	4.8	7.8	7.8	9.5	9.5										
INDOOR MOTOR (HP)	1/4	1/4	1/4	1/4	1/4	1/4	1/4	1/4										
INDOOR MOTOR (A)	1.2	1.2	1.2	1.2	1.2	0.42	1.9	1.8										
OUTDOOR MOTOR (HP)	—	—	—	—	1/4	1/4	1/4	1/4										
OUTDOOR MOTOR (A)	—	—	—	—	—	0.9	0.85	0.85										
PHYSICAL																		
DIMENSIONS (W x D x H)	23" x 23" x 32"	23" x 23" x 32"	23" x 23" x 32"	23" x 23" x 32"	23" x 23" x 47"	23" x 23" x 47"	23" x 23" x 47"	23" x 23" x 47"										
NET WEIGHT (LBS)	114	114	125	124	167	168	167	187										
SHIPPING WEIGHT (LBS)	125	125	136	135	220	176	220	240										
TEST SETTING	LOW	LOW	LOW	LOW	HIGH	HIGH	LOW	LOW										
R410A CHARGE (OZ)	38	39	39.5	37	54	52.8	65	65										
AIRFLOW DATA																		
INDOOR CFM	LOW	HIGH	LOW	HIGH	LOW	HIGH	LOW	HIGH	LOW	HIGH	LOW	HIGH	LOW	HIGH	LOW	HIGH	LOW	HIGH
.10" ESP	420	450	420	450	420	450	390	450	420	465	420	465	610	700	610	700		
.15" ESP	405	425	405	425	405	425	375	425	390	420	390	420	585	670	585	670		
.20" ESP	385	400	385	400	385	400	350	400	345	380	345	380	560	640	560	640		
.25" ESP	355	375	355	375	355	375	325	375	300	325	300	325	535	610	535	610		
.30" ESP	320	350	320	350	320	350	320	350	255	280	255	280	510	580	510	580		
VENT CFM	60	60	60	60	60	60	60	60	60	60	60	60	60	60	60	60		

★ ASHRAE 90.1-2013 Compliant Model

NOTES:

Cooling Standards: 95°F DB/75°F WB outdoor, 80°F DB/67°F WB indoor

Heating Standards: 47°F DB/43°F WB outdoor, 70°F DB/60°F WB indoor

Normal Value Wet Coil @ .1" ESP.

Rated CFM at Low Speed: VHA09....420 VHA12....420

VHA18....420 VHA24....610

Due to continuing research in new energy-saving technology, specifications are subject to change without notice.



Friedrich Air Conditioning Co. | 10001 Reunion Place, Suite 500 | San Antonio, TX 78216 | 877.599.5665 | www.friedrich.com