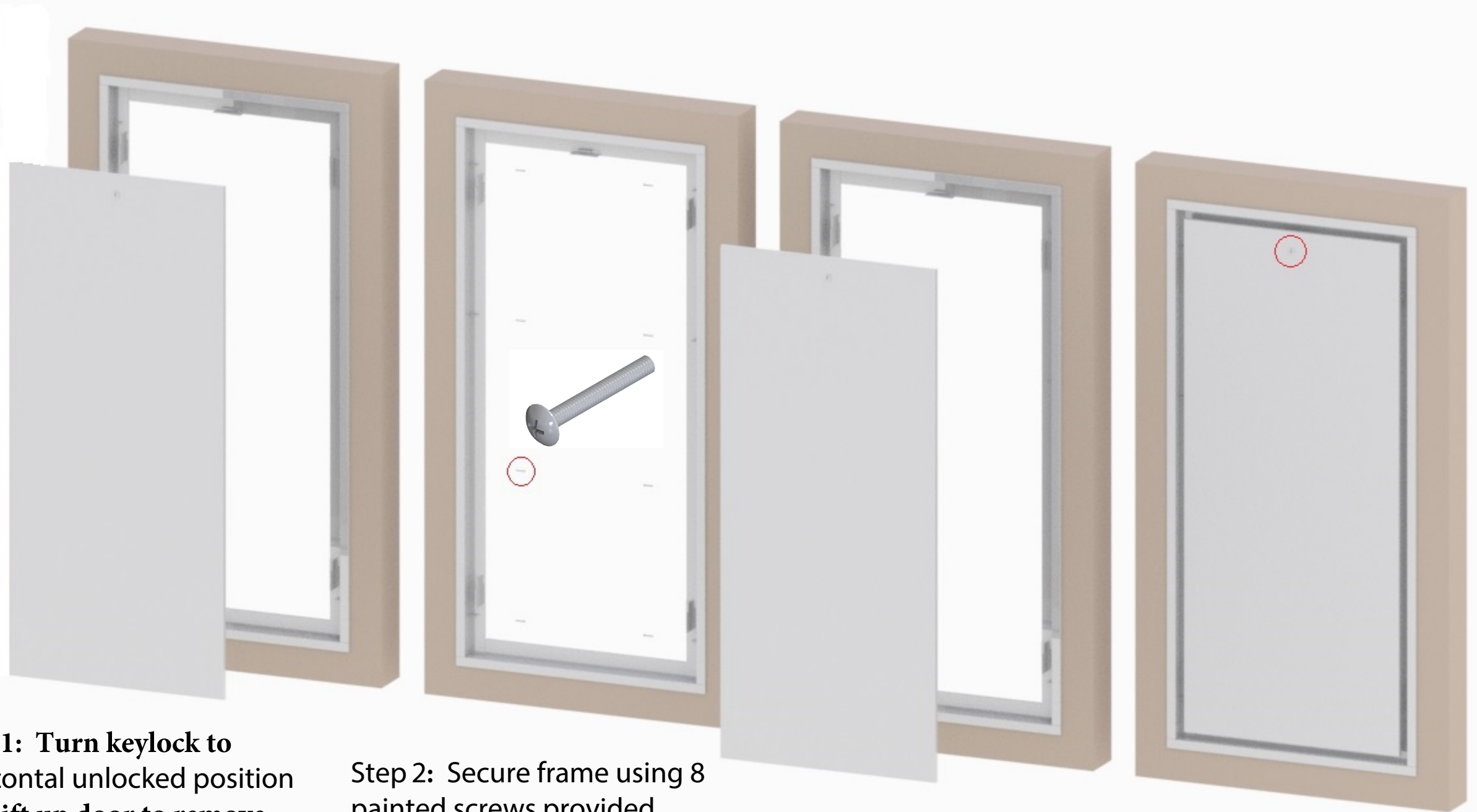


Installation of VRPXAPPR1 removable access panel w/ Keylock



Step 1: Turn keylock to horizontal unlocked position and lift up door to remove. Center VRPXAPPR1 panel frame in wall opening

Step 2: Secure frame using 8 painted screws provided through 3/16" holes in frame

Step 3: With keylock in horizontal unlocked position, line up rectangular slots on door with hook brackets attached to frame

Step 4: Safely slide door down onto hook brackets and turn key to vertical locked position