

# THE NEW MOBILE WORKSPACE: WHAT IT REALLY MEANS

The idea of a "mobile workspace" is one surrounded by promises of being able to work anywhere, on any device, and over any connection. This means that employees and executives alike would have full access to business applications, IT services, and other resources to get their job done regardless of location, or device of choice. *Sounds great in principle, but is it reality?*

## LET'S DISPEL SOME MYTHS: WHAT MOBILITY IN THE WORKPLACE LOOKS LIKE

Although it's important to be able to actually work anywhere... doing "anything on any device" isn't what a mobile workspace are about.

### EMPLOYEES PROBABLY AREN'T:

Working at the beach like you've seen in ads



Taking conference calls from a loud coffee shop



Creating PowerPoints on their cell phones



VS

### EMPLOYEES PROBABLY ARE:

Accessing corporate resources out of the office



Requesting IT services on their personal devices



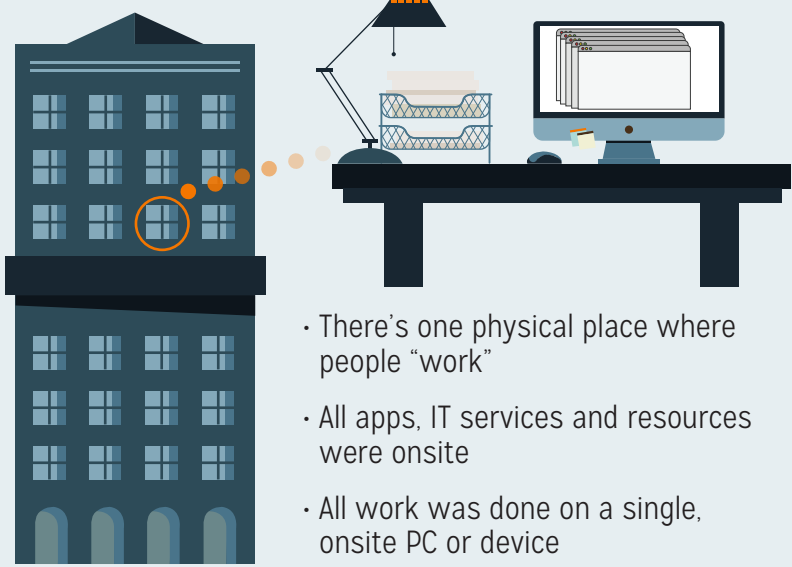
Using business apps on screens without a mouse



## WHAT'S NOT A MYTH: THE WORKPLACE AND WORKFORCE ARE CHANGING DRASTICALLY

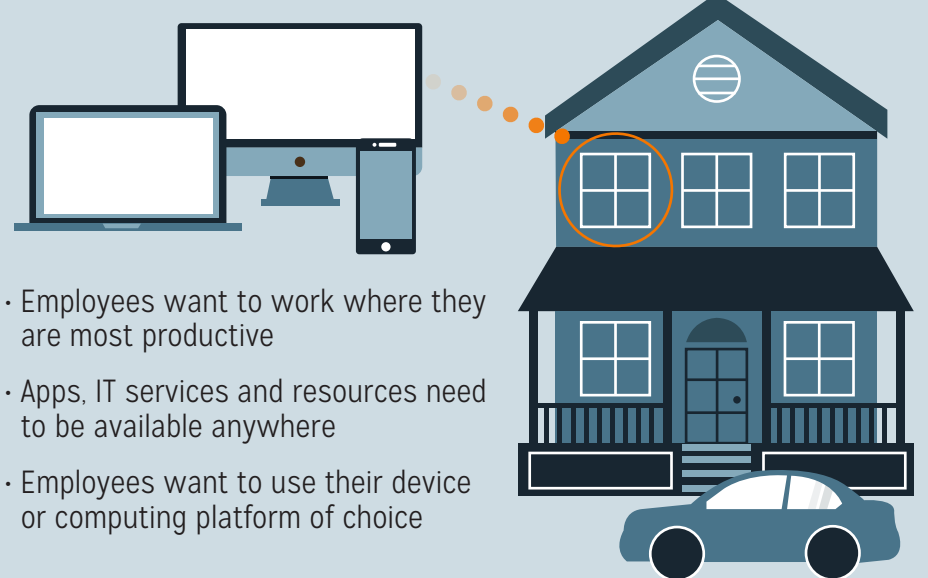
Changes in workforce mobility means it's no longer just about creating a physical place for people to go to work.

### HOW IT USED TO BE: (OR MIGHT STILL BE)



- There's one physical place where people "work"
- All apps, IT services and resources were onsite
- All work was done on a single, onsite PC or device

### HOW IT IS NOW:



- Employees want to work where they are most productive
- Apps, IT services and resources need to be available anywhere
- Employees want to use their device or computing platform of choice

## HOW DO YOU ADAPT? YOU NEED TO CREATE ANYTIME, ANYWHERE WORKSPACES

When you put the power of Citrix in place, you can transform the way IT operates and supports employees or customers.

**HEALTHCARE**

Provide secure access to critical patient information on site or at home, on any web-enabled device to enable clinicians to deliver more efficient care.

**FINANCIAL**

Increase employee mobility by providing secure access to sensitive information on any corporate or personal device, while still adhering to tough regulatory compliance standards and audits.

**PUBLIC SECTOR**

Government agencies can provide mobile secure access to employees or contractors on any device, and schools can provide students and staff with on-demand access to apps and information to promote independent, secure learning environments.

**UTILITIES**

Enable mobile device work orders, send or share pictures, and provide secure access to real-time utility data in the field so employees can focus on customers, especially during outages and other critical times.

## YOU ALSO NEED TECHNOLOGY PARTNERS LIKE DYNTEK AND CITRIX

With Citrix, DynTek helps organizations create mobile workspaces by enabling "IT-as-a-Service."

IT services and resources become automated, self-service clouds that employees can access securely from any device

Devices and information become managed centrally increasing flexibility, manageability, accessibility, and security

Employees can securely access what they need to work, where they are most productive, on their device of choice

## LET US HELP YOU GET STARTED

To us, partnership means more than just implementation. We pride ourselves in ensuring that as our customers' business changes, technology follows. Get in touch with us so we can help you put together a plan to create a mobile workspace for your organization.

Call (877) 297-3723 or visit [www.dyntek.com/mobility](http://www.dyntek.com/mobility) to learn more.

**DYNTEK**

**CITRIX**  
PARTNER  
Platinum  
Solution Advisor  
Specialist