

HJT was invited to partner with a local architect firm to provide designs and solutions to an existing office space. However, the space wasn't a dental office, but a Job Corps Center. The client wanted to add a dental facility to their current training facility to serve the residents in the Job Corps program.

The existing space was previously used as an office or classroom. HJT was able to provide solutions to maximize the existing space by creating a floor plan that optimized the usage of the limited space and created an efficient traffic flow into and around the clinic.

The finished space would have a new two chair dental clinic.

Dental Clinic Challenges

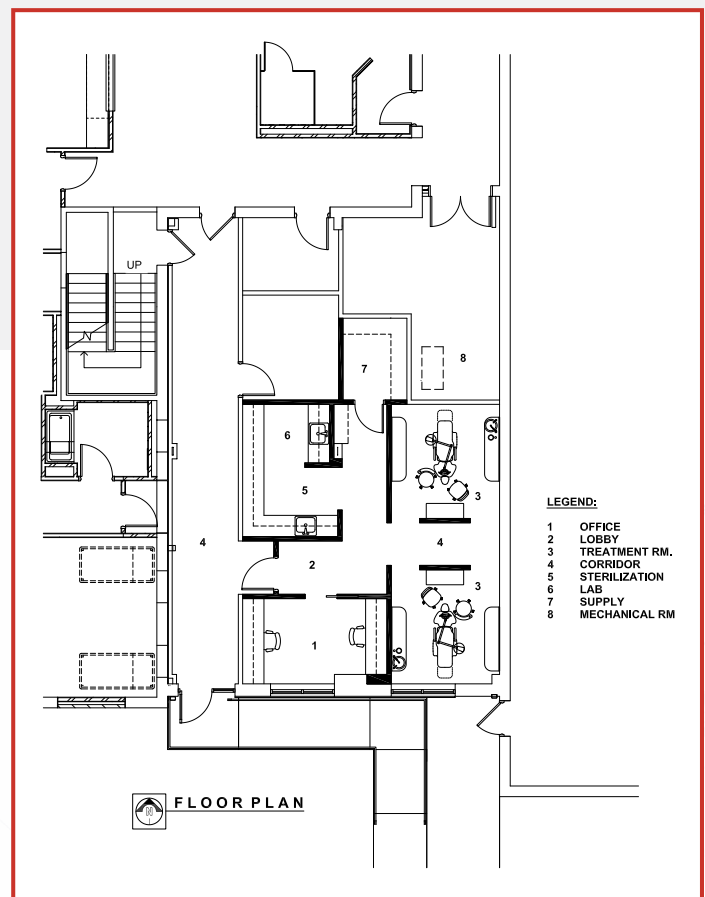
- Create a waiting area and lobby
- Easy to monitor floor plan for staff
- Provide privacy for patients
- Centralized clinical support area away from patient view

Redesigning Current Space Restrictions

By thinking outside the box HJT was able to create a unique floor plan to help the client meet the medical and oral health needs of their clients.

Why Choose HJT?

HJT Dental Design Consultants can design and maximize the footprint to use all available space for dental clinics and practices. We specialize in designing and creating unique layouts for the smallest of spaces.



If you have uncommon space restrictions for your next dental practice remodel, contact HJT Dental Design Consultants and find out how to fit everything you want and more into your space



Dental Design Consultants

118 W. Wayne St., Maumee, OH 43537
(419) 517-5370

PO Box 8194 Madeira Beach, FL 33738
(419) 410-1562