

monthly updates

1st April 2020

Issue 018

Welcome!

Whether you are working from home or at the Park, the MEPC Milton Park team is thinking of you and we hope you're keeping well.

This month's newsletter has a common theme relating to the current situation in which we find ourselves. We hope it's useful.

Remember you can hear the latest news, as it happens, by following us on [Twitter](#), [Facebook](#), [Instagram](#) and [LinkedIn](#).



Update on COVID-19

Following the most current UK government COVID-19 advice issued, we wanted to update you on matters at Milton Park covering travel, amenities and events.



Call for delivery drivers and donations for brilliant Didcot food distribution charity

Can you volunteer or donate to SOFEA, a Didcot-based charity distributing quality surplus food to the vulnerable and disadvantaged in our community?



Isansys provides advanced patient monitoring capability for clinical teams



Languages at Lunch switches to online courses



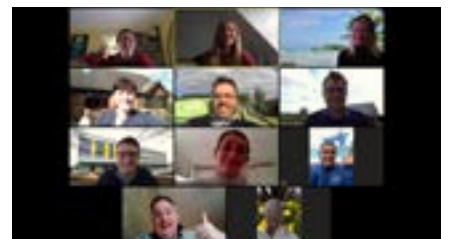
Do you know about the Government's new business support website?



Have your say on proposed new science bridge, river crossing, bypass and cycle lanes



Do you need help setting up remote working? Park-based ITGL can help



Thoughts on remote working from your Milton Park team

Keep up to date on all our upcoming news and events by visiting: miltonpark.co.uk/news

+44 (0)1235 865 555

enquiries@miltonpark.co.uk

www.miltonpark.co.uk