

# monthly updates

6th May 2020

Issue 019

## A warm hello to our community

We hope that you're keeping well.

Currently the team is working on a 'Return to Work' strategy for the Park. This will of course follow Government guidance and we will share with you our plans as soon as we can.

You can keep up to date with our latest travel and amenities update [here](#).

Remember for your travel planning, [Mi-Link](#) provides handy, real-time information.

For the latest news, as it happens, follow us on [Twitter](#), [Facebook](#), [Instagram](#) and [LinkedIn](#).

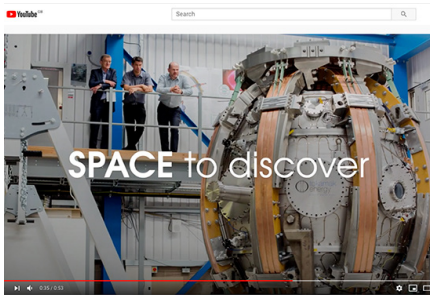
In the meantime, stay safe.



## Read our round-up of companies at the Park helping with the important COVID-19 response

There are many companies up and down the country playing a vital role in the COVID-19 response.

Here we pay tribute to those amazing companies and their teams that are based at Milton Park which are going above and beyond.



## Watch our Milton Park lockdown videos!

Take a look at our two, short Park videos that we made for BioTrinity Digital. We hope you enjoy them..



Find out what's new with Didcot Garden Town projects



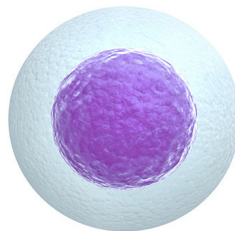
Can you help the NHS with vital PPE?



Did you know it's National Walking Month? Download our Park walking map



Are you a bike share member? Complete this short survey to win £150 vouchers



Vivoplex given go-ahead for clinical study on helping women boost their fertility



Meet Jon, the Park's new head gardener!

Keep up to date on all our upcoming news and events by visiting: [miltonpark.co.uk/news](https://miltonpark.co.uk/news)

+44 (0)1235 865 555

[enquiries@miltonpark.com](mailto:enquiries@miltonpark.com)

[www.miltonpark.co.uk](https://www.miltonpark.co.uk)