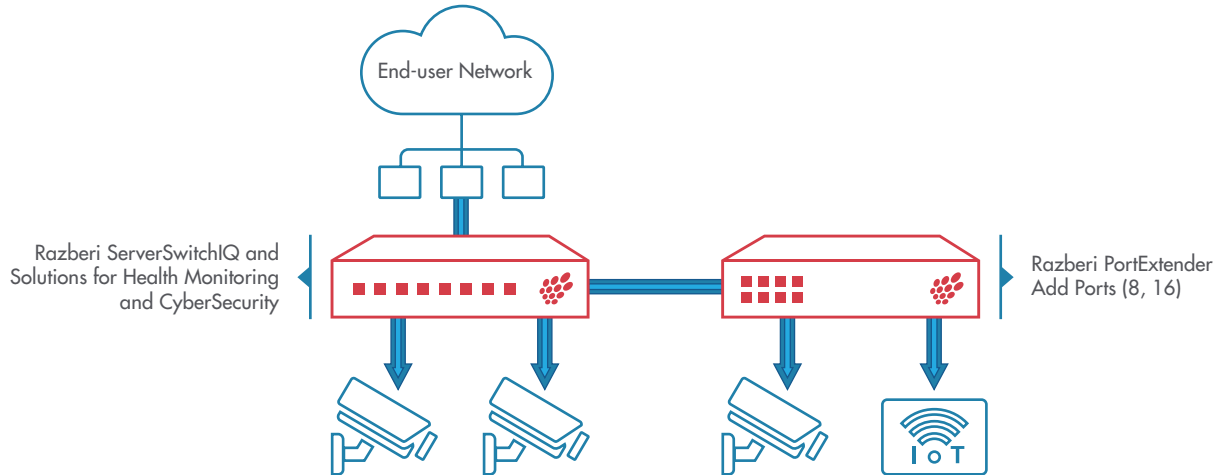


ServerSwitchIQ™ PortExtender™



The smart and secure solution to scale surveillance.
Protect and monitor up to 152 devices per appliance.



Razberi PortExtender extends Razberi's CameraDefense™ cybersecurity and VyneWatch™ health monitoring to cameras not physically connected to Razberi ServerSwitchIQ appliances. An encrypted, plug-and-play connection securely adds increased scalability for more network cameras and other IoT devices with an intuitive, single point of management. The PortExtender serves as a stacked, managed PoE switch that performs deep packet inspection enabling automated camera hardening and security for IoT devices.

FEATURES:

- Connect Razberi PortExtender via cable (CAT5E/CAT6) or fiber media
- Connectivity Options: Direct connect or via a network
- Up to 16 PoE ports with 277W total output
- Increased scalability with up to 8 PortExtenders to a single ServerSwitch
- Razberi VyneWatch health monitoring features
- Razberi CameraDefense Automated Camera Hardening
- Easy post installation camera port additions
- Plug and play implementation
- Single point of management
- Encrypted connection between network ports
- Extends network ports closer to cameras
- 3 Year Warranty



SMART SCALABILITY

- **Enable cost effective scalability**
- **Cost per camera optimization**
- **Single point of management**
- **Cybersecurity**
- **Health monitoring**

Razberi is open and certified with world-class VMS partners



Contact Razberi Technologies for a demonstration or more information at razberi.net



ASSEMBLED IN THE USA

Americas: 469-828-3380
UK/EMEA: 0203 773 3689
salesinfo@razberi.net

dspe20171221

SPECIFICATIONS:

Intelligent Surveillance Appliances

Razberi PortExtender Specifications

Intelligent Features	Up to 16 PoE ports with 277W total output Razberi VyneWatch health monitoring Razberi CameraDefense IoT hardening 3 Year Warranty	Uplinks	1 x 10/100/1000 Mbps Combo SFP 1 x 10/100/1000 Mbps RJ-45
Certifications	UL, cUL, CE, FCC, RoHS, WEEE FCC Part15 Class A, CISPR22, EN 55022: Class A, EN 61000-3-2, EN 61000-3-3, EN 55024, EN 60950-1	Input Voltage	90 to 265 VAC
Switch Control	HTTPS Browser Interface 10/100 Layer 2 Switching VLAN Management AES 256 Encrypted Communications	Typical Current	(500W supply) 5.3A @ 115 VAC
PoE	IEEE 802.3af, IEEE 802.3at Up to 30W per port	Operating Environment	0°C to 45°C (32°F to 113°F) 10% to 90% RH Non-condensing
Connectivity Options: Direct Connect	ServerSwitch IQ to PortExtender uplink 1 to uplink 1 1000BaseT (Copper) or 1000BaseX (Fiber)	Connectivity Options: Network	ServerSwitch IQ and PortExtender connected via uplink 1 to network supporting LLDP
Scalability	Up to 8 PortExtenders via network		

Razberi PortExtender Model-Specific Table

Part Number	Dimensions (L x W x H)	Mounting	PoE Wattage
Razberi 8 Port PortExtender			
PEM8P	7.45 x 9.4 x 1.75 in 190 x 238 x 44 mm	Desk, Wall Mount	140 Watts
Razberi 16 Port PortExtender			
PEM16P	13.45 x 17.2 x 1.75 in 342 x 438 x 44 mm	Desk, Rack Ears	277 Watts

Razberi PortExtender SSIQ Compatibility

Part Number	ServerSwitchIQ Standard		ServerSwitchIQ Professional			ServerSwitchIQ Enterprise		ServerSwitchIQ Rugged
	SSIQ8	SSIQ16	SSIQ8P	SSIQ16P	SSIQ24P	SSIQ24E	SSIQ24E2U	SSIQ8-R
PEM16P				✓	✓	✓	✓	
PEM8P			✓	✓	✓	✓	✓	

Razberi PortExtender

