



For Distributors Use Only

have a question | info@bfm1.com

place order | orders@bfm1.com

submit a claim | returns@bfm1.com

payment information | AR@bfm1.com

need a freight quote | freightquote@bfm1.com



2080 Wheatsheaf Lane
Philadelphia, PA 19124

T: 215-289-5411 F: 215-289-5420

www.bfmseating.com



Table of Contents

Outdoor Furniture

Alpha bases	44
Aluminum market umbrellas	56
Aruba lounge seating	48
Avalon	29
Bali bases	43
Barnegat tables	32
Bayview	6
Bayview tables	7,39
Beachcomber	24
Beachcomber tables	25,40
Belmar lounge seating	46
Boca bases	45
Bolt-down umbrellas	60
Cancun booth	15
Cantilever umbrellas	62
Capri	11
Chesapeake	31
Crank lift fiberglass umbrellas	52
Elite bases	44
Fiberglass market umbrellas	50
Fresco	8
Fresco tables	9,39
G-series aluminum market umbrellas	58
G-series fiberglass market umbrellas	54
Groove tables	41
Hampton	12
Hampton bases	13,43
Hampton tables	13,39
Kingston	28
Largo	18
Lola	37
Longport 4-leg tables	19,41
Longport table tops	19,40
Madrid	35
Margate bases	43
Marina	15
Maze	26
Maze lounge series	27
Monterey	14
Nexus tables	26,40
Norden	34
Parma	36
Rio	33
Seaside	16
Seaside 4-leg tables	17,41
Seaside table tops	17,40
SoHo table tops	42
South Beach	20
South Beach tables	21,39
Tara X	10
Tribeca table tops	42
Umbrella bases	64
Venice beach	30
Vista	22
Vista bench	23
Vista tables	23,41

Industrial Seating

Hamilton	71
Henry	74
Lima clear coat	75
Lincoln	73
Memphis	72
NV	70
Trent clear coat	75,87

Steel Seating

Akrin	86
Axel	77
Dale	81
Darby	83
Espy	82
Kyle	88
Lima	79
Lima Silver Mist	78
Marietta	84
Polk	85
Trent	78,87
Troy	80

Wood Seating

Burlington	99
Columbia	97
Cornell	98
Delran	100
Dover	93
Emma	91
Giulia	92
Merion	94
Oxford	96
Pennington	102
Princeton	101
Sofia	90
Trevor	103
Weston	95

Indoor Tables & Bases

Alpha base	110
Adele base	111
Bali end bases	110
Bolt-down bases	111
Cantilever & pin leg bases	111
Corner post legs	111
Daphanie bases	110
Double-sided laminate table tops	106
Elite bases	109
I-Beam bases	111
Indoor, standard, cross, end & round bases	109
Margate bases	110
Midtown table tops	105
Niles bases	110
NV legs	111
Relic table tops	107
Resin table tops	106
Stamped chrome bases	110
Travis bases	110
Wood veneer table tops	105

Trash Receptacles

35 Gallon trash enclosures	107,108
----------------------------	---------

Design

Grade 1 vinyl	112
Grade 2 vinyl	113
Grade 3 vinyl	114
Grade 4 vinyl	115
Metal frame wood seat options	112
Sunbrella® sofa cushion fabric	116
Umbrella fabric	118

Reference

Indoor Table Base Sizing Guide	120
Outdoor Table Base Sizing Guide	121
Terms & Conditions	119

Dimensions in inches | h = overall height | w = overall width | sh = seat height | sd = seat depth | armht = arm height

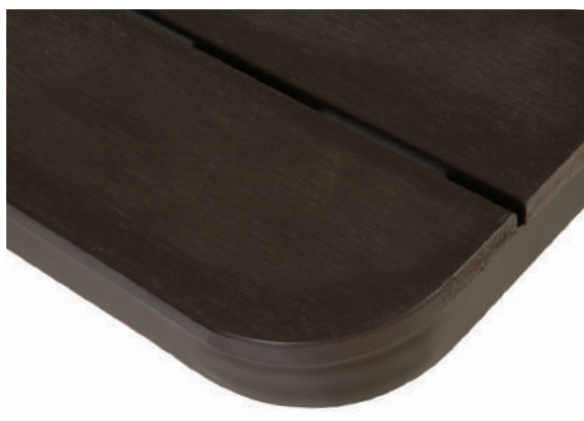
Bayview series



PRODUCT INFORMATION

PH301CBR-BZ	armchair dimensions h32.5 w21.8 sh18 sd17 armht25
PH302CBR-BZ	side chair dimensions h32.5 w16 sh18 sd17
PH302BBR-BZ	barstool dimensions h45 w16 sh29 sd17
frame finish	BZ ● bronze
materials	aluminum bronze powder coat walnut synthetic wood
feature	arm and side chair stackable

Bayview tables



PRODUCT INFORMATION

PH4L3232BR-BZ	4-leg table dimensions 32 x 32 dining height
PH4L3636BR-BZ	4-leg table dimensions 36 x 36 dining height
PH4L3255BR-BZ	4-leg table dimensions 32 x 55 dining height
PH4L3232BR-BZT	4-leg table dimensions 32 x 32 bar height
PH4L3636BR-BZT	4-leg table dimensions 36 x 36 bar height
PH4L3255BR-BZT	4-leg table dimensions 32 x 55 bar height
materials	aluminum bronze powder coat walnut synthetic wood
feature	ADA compliant sizes available umbrella hole optional weighted umbrella base required, sold separately, see page 64

Attention: refracting sunlight from stemware or a concentrated heat source may cause damage to synthetic surface, voiding warranty.

Fresco series



PRODUCT INFORMATION

PH802CBZ	side chair dimensions h33.5 w16 sh18 sd17.25
PH802BBZ	barstool dimensions h45 w16 sh29.5 sd17
frame finish	BZ ● bronze
materials	aluminum bronze powder coat
feature	side chair stackable

Fresco tables



PRODUCT INFORMATION

PH4L3232BZ	4-leg table dimensions 32 x 32 dining height
PH4L3636BZ	4-leg table dimensions 36 x 36 dining height
PH4L3255BZ	4-leg table dimensions 32 x 55 dining height
PH4L3232BZT	4-leg table dimensions 32 x 32 bar height
PH4L3636BZT	4-leg table dimensions 36 x 36 bar height
PH4L3255BZT	4-leg table dimensions 32 x 55 bar height
materials	aluminum bronze powder coat
feature	ADA compliant sizes available umbrella hole optional weighted umbrella base required, sold separately, see page 64

Tara X series



PRODUCT INFORMATION

DV680TS	armchair dimensions h30.75 w18.5 sh18 sd15.5 armht27.5
DV580TS	side chair dimensions h33.25 w16 sh18 sd15.5
DV380TS	barstool dimensions h40.5 w16 sh31 sd16
frame finish	TS ● titanium silver
materials	e-coated powder coated tubular steel
feature	stackable

Capri series



PRODUCT INFORMATION

MS0021+finish	armchair dimensions h29 w19 sh17 sd17 armht27
MS0025+finish	side chair dimensions h30 w18 sh17.5 sd16
MS0063+finish	barstool dimensions h41 w18.5 sh31 sd13.5
frame finish	SG ● soft gray BZ ● bronze
materials	aluminum stainless steel hardware powder coat
feature	armchair and side chair stackable

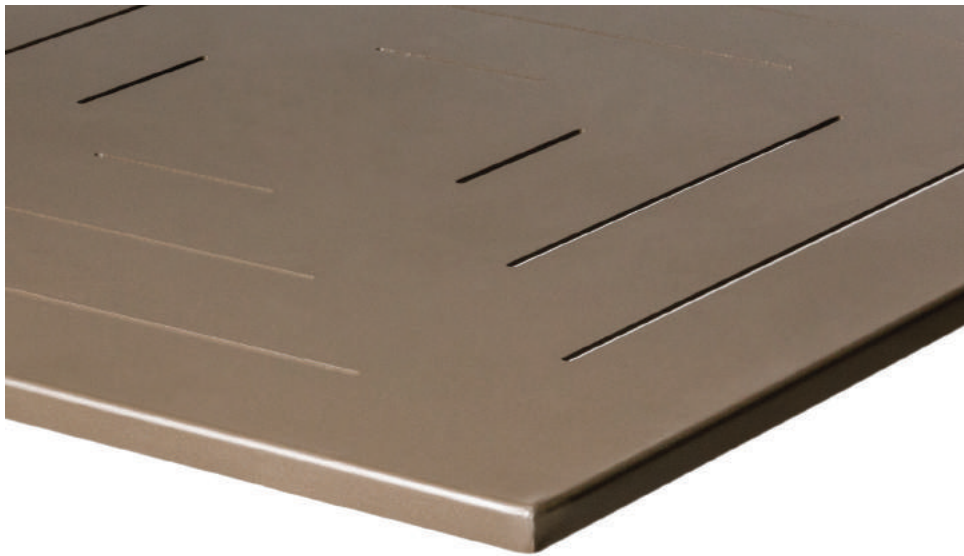
Hampton series



PRODUCT INFORMATION

PH901CBZ	armchair dimensions h32 w16 sh18 sd18 armht25
PH902CBZ	side chair dimensions h32 w15 sh18 sd18
PH902BBZ	barstool dimensions h44 w15 sh30 sd17.5
frame finish	BZ ● bronze
materials	aluminum powder coat
feature	stackable

Hampton tables



PRODUCT INFORMATION

PHH+size+BZ	table dimensions 24 x 32 32 x 32 36 x 36 dining height
PHH+size+BZT	table dimensions 24 x 32 32 x 32 36 x 36 bar height
PHHTB+size+BZ	cross base dining height
PHHTB+size+BZT	cross base bar height
frame finish	BZ ● bronze
materials	aluminum powder coat
feature	adjustable levelers table sold as a set

Monterey series



PRODUCT INFORMATION

PH501CJV	armchair dimensions h34.5 w18 sh18 sd17 armht24
PH500CJV	side chair dimensions h34 w16 sh18 sd17
PH500BJV	barstool dimensions h42.25 w18.5 sh29.75 sd16
wicker color	JV ● java
materials	aluminum outdoor synthetic weave
features	stackable side and armchair aluminum leg endcaps

Cancun booth



Marina series



PRODUCT INFORMATION

PH7100JV	booth bench dimensions h37.5 w48 sh17.5 sd18
wicker color	JV ● java
materials	aluminum frame powder coat outdoor synthetic weave
features	2" cushion available aluminum foot caps
MS11CBBBL	armchair dimensions h30 w19.5 sh17 sd17 armht27
MS10BBBBL	backless barstool dimensions h30.25 w20 sd13
frame finish	black powder coat brown/black weave & binding
materials	aluminum frame powder coat outdoor synthetic weave 2" cushion available, sold separately
feature	armchair stackable

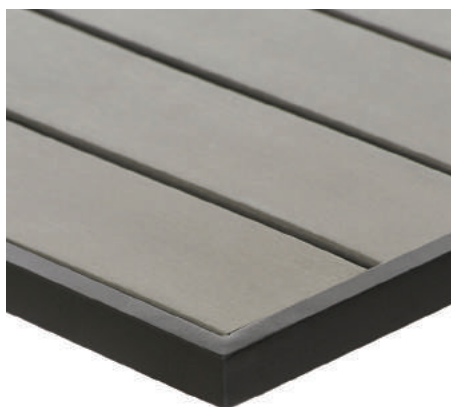
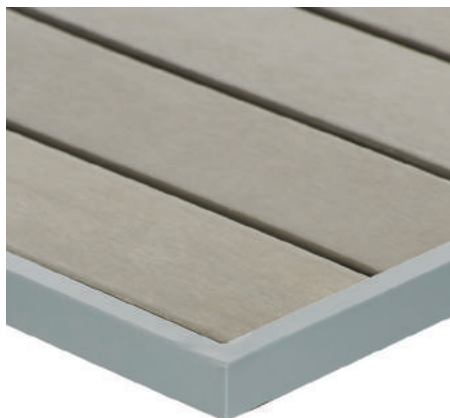
Seaside series



PRODUCT INFORMATION

PH201CGRTK+finish	armchair dimensions h33 w19.5 sh17.5 sd17.5 armht24
PH202CGRTK+ finish	side chair dimensions h33 w16 sh17.5 sd17.5
PH201BGRTK+finish	arm barstool dimensions h45 w19.5 sh29.5 sd17.5 armht36
PH202BGRTK+finish	side barstool dimensions h45 w15.5 sh29.5 sd17.5
frame finish	SG ● soft gray BL ● black
materials	aluminum powder coat gray synthetic teak
feature	armchair and side chair stackable

Seaside tables



PRODUCT INFORMATION

PH+size+GR+finish	table top dimensions 24 x 30 30 x 30 34 x 34 30 x 51
base options	alpha bali margate
PH4L+size+GR+finish	4-leg table dimensions 31 x 31 35 x 35 31 x 48 35 x 72 dining height
PH4L+size+GR+finish+T	4-leg table dimensions 31 x 48 35 x 72 bar height
frame finish	SG ● soft gray BL ● black
materials	aluminum powder coat gray synthetic teak
features	ADA compliant sizes available umbrella hole optional for 4-leg tables and margate base only weighted umbrella base required, sold separately, see page 64 4-leg tables offer bolt-down capabilities

Attention: refracting sunlight from stemware or a concentrated heat source may cause damage to synthetic surface, voiding warranty.

Largo series



PRODUCT INFORMATION

PH101CTK+finish	armchair dimensions h33 w19 sh17.25 sd18 armht24
PH102CTK+finish	side chair dimensions h33 w16.5 sh17.5 sd17
PH101BTK+finish	arm barstool dimensions h45.75 w19 sh29.25 sd18 armht36
PH102BTK+finish	side barstool dimensions h45.5 w16.5 sh29.75 sd17.5
frame finish	BL ● black SV ● silver
materials	aluminum powder coat synthetic teak
feature	armchair and side chair stackable

Longport tables



PRODUCT INFORMATION

PH+size+TK+finish	table top dimensions 24 x 24 24 x 30 32 x 32 35 x 35 32 x 48 24R 32R 36R
base options	alpha bali margate
PH4L+size+TK+finish	4-leg table dimensions 32 x 32 35 x 35 32 x 48 35 x 71 dining height
PH4L+size+TK+finish+T	4-leg table dimensions 32 x 48 35 x 71 bar height
frame finish	BL ● black SV ● silver
materials	aluminum powder coat synthetic teak table top
features	ADA compliant sizes available umbrella hole optional for 4-leg tables and margate base only weighted umbrella base required, sold separately, see page 64 4-leg tables offer bolt-down capabilities

Attention: refracting sunlight from stemware or a concentrated heat source may cause damage to synthetic surface, voiding warranty.

South Beach series



PRODUCT INFORMATION

DV350TS	armchair dimensions h33.5 w18 sh18 sd16 armht24.5
DV450TS	side chair dimensions h33.5 w18 sh18 sd16
DV550TS	barstool dimensions h39.5 w16 sh30 sd13
frame finish	TS ● titanium silver
materials	aluminum powder coat
feature	stackable

South Beach tables



PRODUCT INFORMATION

DVS+size+TS	table dimensions 24 x 32 <small>(no umbrella hole)</small> 32 x 32 36 x 36 32 x 48 dining height
DVS3232TSUT	table dimensions 32 x 32 bar height
frame finish	TS ● titanium silver
materials	aluminum powder coat
feature	base supports umbrella 32 x 48 weighted umbrella base required, sold separately, see page 64

Vista series



PRODUCT INFORMATION

DV352+finish	armchair dimensions h33 w19.5 sh18 sd16.5 armht24
DV452+finish	side chair dimensions h33 w15 sh18 sd16.5
DV552+finish	barstool dimensions h40 w13.5 sh30.5 sd14
frame finish	BL ● black ER ● earth
materials	aluminum powder coat
feature	stackable

Vista bench



Vista table



PRODUCT INFORMATION

DV752+finish	bench dimensions h31.5 w69 sh18 sd17
DVV+size+finish	table dimensions 32 x 32 dining or bar height 36 x 36 dining height 32 x 48 (ADA compliant)
frame finish	BL ● black ER ● earth
materials	aluminum powder coat
features	bolt-down part #DVV-BD for vista benches and tables umbrella hole standard weighted umbrella base required, sold separately, see page 64

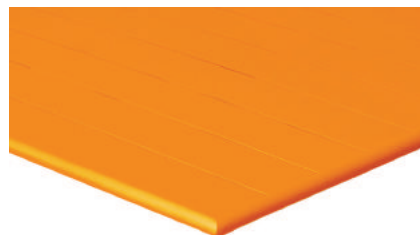
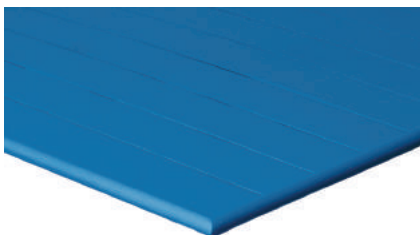
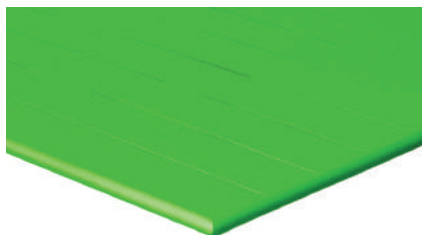
Beachcomber series



PRODUCT INFORMATION

MS802C+finish	side chair dimensions h33 w17.5 sh18 sd17
MS802B+finish	barstool dimensions h45 w18 sh29 sd14
frame finish	LM ● lime BY ● berry CT ● citrus
materials	aluminum powder coat
feature	stackable side chairs

Beachcomber tables



PRODUCT INFORMATION

MSB+size+finish combination set dimensions | 24 x 32 | 32 x 32 | 36 x 36 | dining height

MSB+size+finish+T combination set dimensions | 24 x 32 | 32 x 32 | bar height

frame finish LM ● lime | BY ● berry | CT ● citrus

materials aluminum | powder coat

Maze series



NEXUS

PRODUCT INFORMATION

DV360+finish	armchair dimensions h29.5 w17 sh18 sd16 armht28
DV560+finish	barstool dimensions h41 w16 sh29 sd14.5
DVN+size+finish	table dimensions 24 x 32 32 x 32 36 x 36 dining height
DVN+size+finish+T	table dimensions 32 x 32 bar height
frame finish	TS ● titanium silver BL ● black GE ● grenadine (table not available in black)
materials	e-coated steel powder coated steel micro mesh
features	stackable umbrella capability 32x32 and 36x36 weighted umbrella base required, sold separately, see page 64 table not available in black finish

Maze lounge series



PRODUCT INFORMATION

DV260+finish	lounge chair dimensions h28 w22 sh14 sd16
DVL18R+finish	side table dimensions 18"
DV160+finish	footstool dimensions h14 w18 d24.5
DVL30R+finish	lounge table dimensions 30"
frame finish	TS ● titanium silver GE ● grenadine
materials	e-coated steel powder coated steel micro mesh

Kingston series



PRODUCT INFORMATION

SU1601CBL	armchair dimensions h32.25 w20.75 sh17.5 sd14.5 armht24.5
SU1600CBL	side chair dimensions h32.25 w17.75 sh17.5 sd14.5
SU1600BBL	barstool dimensions h39.75 w19 sh29.75 sd13.5
frame finish	BL ● black
materials	e-coated steel powder coated steel micro mesh
feature	stackable

Avalon series



PRODUCT INFORMATION

DV354BL armchair dimensions | h34 | w23 | sh18 | sd17 | armht24.5

DV454BL side chair dimensions | h34 | w18 | sh18 | sd17

DV554BL barstool dimensions | h40.5 | w20 | sh29 | sd14

frame finish BL ● black

materials e-coated steel | powder coated | steel micro mesh

feature stackable

Venice Beach series



PRODUCT INFORMATION

DV355+finish	armchair dimensions h32.5 w17 sh18.5 sd16 armht27
DV455+finish	side chair dimensions h33 w18 sh18.5 sd16
DV555+finish	barstool dimensions h40.5 w16 sh31 sd16
frame finish	TS ● titanium silver GE ● grenadine
materials	e-coated steel powder coated steel micro mesh
feature	stackable

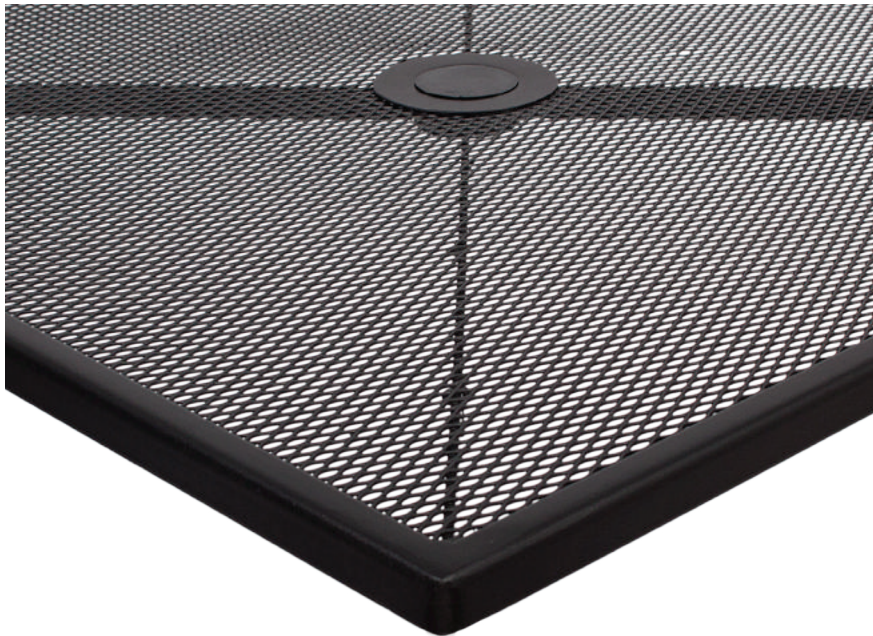
Chesapeake series



PRODUCT INFORMATION

SU1301CBL	armchair dimensions h34 w17 sh17.5 sd17.5 armht24
SU1300CBL	side chair dimensions h34 w17 sh17.5 sd17.5
SU1300BBL	barstool dimensions h43.5 w16 sh30 sd15.5
frame finish	BL ● black
materials	e-coated steel powder coated steel micro mesh
features	stackable

Barnegat tables



PRODUCT INFORMATION

SU+size+BL	table dimensions 24 x 32 30 x 30 36 x 36 24R 30R 36R 42R dining height
SU+size+BL+T	table dimensions 24 x 32 30 x 30 36 x 36 24R 30R 36R 42R bar height
frame finish	black
materials	e-coated steel powder coated steel micro mesh
feature	umbrella compatible (weighted umbrella base required, sold separately, see pg. 64)

Rio series



PRODUCT INFORMATION

DV353MOBL	armchair dimensions h33 w19.5 sh18 sd16.5 armh24
DV453MOBL	side chair dimensions h33 w15 sh18 sd16.5
DV553MOBL	barstool dimensions h40 w13.5 sh30.5 sd13.5
frame finish	BL ● black
weave color	MO ● mocha
materials	aluminum powder coat synthetic weave
feature	stackable

Norden series



PRODUCT INFORMATION

MS3084STK	side chair dimensions h31 w16 sh18 sd17
MS6074STK	backless barstool dimensions h30.5 w18 sd12
frame finish	BL ● black
materials	aluminum powder coat synthetic teak
feature	side chair stackable

Madrid series



PRODUCT INFORMATION

MS21C+color	armchair dimensions h28.5 w19 sh17.75 sd18 armht27
MS51B+color	arm barstool dimensions h41 w18.5 sh31.5 sd15 armht38
frame finish	anodized aluminum
weave color	TN ● tan BL ● black
feature	armchair stackable

Parma series



PRODUCT INFORMATION

MS0021	armchair dimensions h29 w19 sh17 sd17 armht27
MS0025	side chair dimensions h30 w18 sh17.5 sd16
MS0063	arm barstool dimensions h41 w18.5 sh31 sd13.5 armht38
materials	anodized aluminum
features	armchair & side chair stackable

Lola series



PRODUCT INFORMATION

SA21476OR	SA21475BL	armchair dimensions h31 w18.5 sh17 sd16 armht25
SA21471CR	SA21479RD	
SA21524OR	SA21523BL	side chair dimensions h32.5 w16.5 sh17.5 sd16.5
SA21519CR	SA21527RD	
seat color	OR ● orange BL ● black CR ● cream RD ● red	
materials	resin silver powder coat aluminum legs	
feature	stackable	



Outdoor tables

Bayview tables



PH4L3232BR-BZ | 4-leg dining height table | 32 x 32

PH4L3636BR-BZ | 4-leg dining height table | 36 x 36

PH4L3255BR-BZ | 4-Leg dining height table | 32 x 55

PH4L3232BR-BZT | 4-leg bar height table | 32 x 32

PH4L3636BR-BZT | 4-leg bar height table | 36 x 36

PH4L3255BR-BZT | 4-leg bar height table | 32 x 55

finish | walnut synthetic wood | BZ ● bronze powder coat

materials | aluminum | synthetic wood | powder coat

feature | 32x55 ADA compliant | umbrella hole optional
weighted umbrella base required, sold separately,
see page 64

Fresco tables



PH4L3232BZ | 4-leg dining height table | 32 x 32

PH4L3636BZ | 4-leg dining height table | 36 x 36

PH4L3255BZ | 4-leg dining height table | 32 x 55

PH4L3232BZT | 4-leg bar height table | 32 x 32

PH4L3636BZT | 4-leg bar height table | 36 x 36

PH4L3255BZT | 4-leg bar height table | 32 x 55

finish | solid aluminum surface | BZ ● bronze powder coat

materials | aluminum | powder coat

feature | 32x55 ADA compliant | umbrella hole optional
weighted umbrella base required, sold separately,
see page 64

Hampton tables



PHH2432BZ | dining height table | 24 x 32

PHH3232BZ | dining height table | 32 x 32

PHH3636BZ | dining height table | 36 x 36

PHH2432BZT | bar height table | 24 x 32

PHH3232BZT | bar height table | 32 x 32

PHH3636BZT | bar height table | 36 x 36

finish | BZ ● bronze

materials | powder coated aluminum

feature | base included

South Beach tables



DVS2432TS | dining height table | 24 x 32 (umbrella hole N/A)

DVS3232TSU | dining height table | 32 x 32

DVS3636TSU | dining height table | 36 x 36

DVS3248TSU | dining height table | 32 x 48

DVS3232TSUT | bar height table | 32 x 32

finish | TS ● titanium silver powder coat

materials | powder coated aluminum

features | base supports umbrella | base included

Beachcomber tables



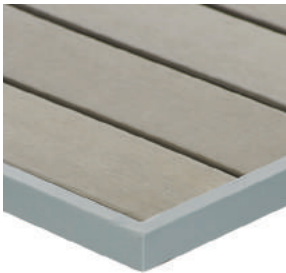
- MSB2432 | dining height table | 24 x 32
- MSB3232 | dining height table | 32 x 32
- MSB3636 | dining height table | 36 x 36
- MSB2432T | bar height table | 24 x 32
- MSB3232T | bar height table | 32 x 32
- finish | LM lime | BY berry | CT citrus
- materials | powder coated aluminum

Nexus tables



- DVN2432 | dining height table | 24 x 32 (umbrella not available)
- DVN3232 | dining height table | 32 x 32
- DVN3636 | dining height table | 36 x 36
- DVN3232T | bar height table | 32 x 32
- finish | TS titanium silver | GE grenadine
- materials | e-coated steel | powder coated | micro mesh
- feature | umbrella capacity | weighted umbrella base required, sold separately, see page 64

Seaside table tops



- PH2430GRTK | 24 x 30
- PH3030GRTK | 30 x 30
- PH3434GRTK | 34 x 34
- PH3051GRTK | 30 x 51
- finish | SG soft gray edge | BL black edge
- materials | gray synthetic teak | aluminum sub-frame powder coat
- base option | margate or bali or alpha
- feature | umbrella hole upon request (margate only)

Longport table tops



- PH2424TK | 24 x 24
- PH3248TK | 32 x 48
- PH2432TK | 24 x 32
- PH24RTK | 24R
- PH3232TK | 32 x 32
- PH32RTK | 32R
- PH3636TK | 36 x 36
- PH34RTK | 34R
- finish | SV silver edge | BL black edge
- materials | synthetic teak | aluminum sub-frame | powder coat
- base option | margate or bali or alpha
- feature | umbrella hole upon request (margate only)

Seaside tables



PH4L3131GR | 4-leg bolt-down table | 31 x 31

PH4L3148GR | 4-leg bolt-down table | 31 x 48 (ADA compliant)

PH4L3535GR | 4-leg bolt-down table | 35 x 35

PH4L3572GR | 4-leg bolt-down table | 35 x 72 (ADA compliant)

PH4L3148GRT | 4-leg bar height bolt-down table | 31 x 48

PH4L3572GRT | 4-leg bar height bolt-down table | 35 x 72

finish | synthetic teak | frame options BL ● black | SG ● soft gray

materials | synthetic wood | aluminum | powder coat

feature | umbrella hole optional | weighted umbrella base required, sold separately, see page 64

Longport tables



PH4L3232 | 4-leg bolt-down table | 32 x 32

PH4L3248 | 4-leg bolt-down table | 32 x 48 (ADA compliant)

PH4L3535 | 4-leg bolt-down table | 35 x 35

PH4L3571 | 4-leg bolt-down table | 35 x 71 (ADA compliant)

PH4L3248T | 4-leg bolt-down table bar height | 32 x 48

PH4L3571T | 4-leg bolt-down table bar height | 35 x 71

finish | synthetic teak | frame options BL ● black | SV ● silver

materials | synthetic wood | aluminum | powder coat

feature | umbrella hole optional | weighted umbrella base required, sold separately, see page 64

Vista tables



DWV3232 | 32 x 32

DWV3232T | 32 x 32 bar height

DWV3636 | 36 x 36

DWV3248 | 32 x 48 (ADA compliant)

finish | BL ● black | ER ● earth

materials | powder coated aluminum

feature | umbrella hole | weighted umbrella base required, sold separately, see page 64

Groove folding tables



MSG2828FBZ | folding table | 28 x 28

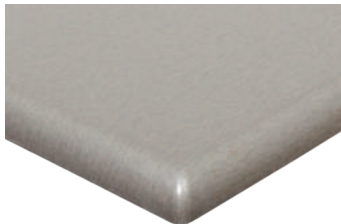
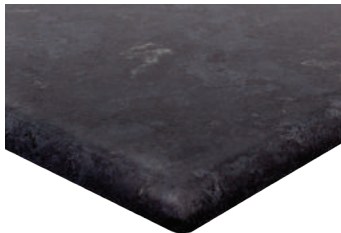
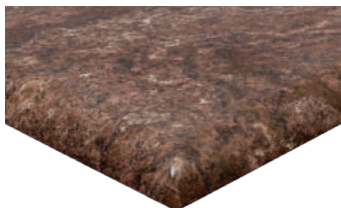
MSG2828FSG | folding table | 28 x 28

finish | BZ ● bronze | SG ● soft gray

materials | powder coated aluminum

feature | folding | safety hook

SoHo table tops



- finish+2424 | 24 x 24
- finish+2432 | 24 x 32
- finish+3232 | 32 x 32
- finish+3636 | 36 x 36
- finish+3248 | 32 x 48
- finish+24R | 24 round
- finish+30R | 30 round
- finish+36R | 36 round
- finish+42R | 42 round
- finish+48R | 48 round
- finish | BW ● barn wood | RG ● rustic gray | BB ● baltic brown
GS ● gray slate | SM ● silver mist
- materials | multilayered melamine resin coating | resin infused core
- features | umbrella hole optional (Margate, Martinique, Boca)
accepts all base mounts

Tribeca table tops



- TRN2432DW | 24 x 32
- TR3N232DW | 32 x 32
- TR3248NDW | 32 x 48
- TR3636NDW | 36 x 36
- finish | DW ● driftwood
- materials | compact laminate
- feature | umbrella hole optional (margate bases only)

Outdoor bases



Bali

PHTB2626 | cross base dining height

PHTB2626T | cross base bar height

finish | BL ● black | SV ● silver

materials | powder coated cast aluminum

feature | additional cast weight



Margate

PHTB+size+R | round dining height

PHTB+size+RT | round bar height

base dimension | 16 | 18 | 20 | 24

finish | BL ● black | SV ● silver

materials | powder coated | zinc plated cast iron, stainless steel column

features | center post base with umbrella capabilities, pinch nut



Bali folding

PHTB2626F | folding dining height

finish | BL ● black | SV ● silver

materials | powder coated, weighted cast aluminum

feature | folding

capabilities | safely holds up to 30" top



Margate

PHBT+size+SQ | square dining height

PHBT+size+SQT | square bar height

base plate | 16 x 16 | 18 x 18 | 20 x 20 | 24 x 24

finish | BL ● black | SV ● silver

materials | powder coated | zinc plated cast iron | stainless steel column

features | center post base with umbrella capabilities, pinch nut



Bali end

PHTB0022 | dining height (sold as pair)

PHTB0022T | bar height (sold as pair)

finish | BL ● black | SV ● silver

materials | powder coated | weighted cast aluminum

feature | compatible with Margate series



Hampton

PHHTB-BZ | cross base dining height

PHHTB-BZT | cross base bar height

finish | BZ ● bronze

materials | powder coated aluminum

feature | additional cast weight

Outdoor bases



Elite square

- PHTB+size+SQSS | dining height
- PHTB+size+SQSST | bar height
- base dimension | 18 x 18 | 24 x 24
- materials | 304 brushed stainless steel



Alpha

- PHTB-BDSS | bolt-down base dining height
- PHTB-BDSST | bolt-down base bar height
- finish | SS ● stainless steel
- materials | 304 stainless steel powder coated
- capabilities | bolt down



Elite round

- PHTB+size+RSS | dining height
- PHTB+size+RSST | bar height
- base dimension | 18 | 24
- materials | 304 brushed stainless steel



Alpha

- PHTB-BD
- PHTB-BDT | bolt-down base bar height
- finish | BL ● black | SV ● silver
- materials | 304 stainless steel
- capabilities | bolt down



Elite end

- PHTB0024SS | dining height (sold as pair)
- PHTB0024SST | end bases bar height (sold as pair)
- base dimension | 4 x 24
- materials | 304 brushed stainless steel
- feature | ADA capabilities



Elite double column

- PHTB1630SS | dining height
- PHTB1630SST | bar height
- base dimension | 16 x 30
- materials | 304 brushed stainless steel

Outdoor bases



Boca

PHTB501 | 4-leg dining height

base spread | 24"

finish | BL ● black

materials | powder coated cast aluminum



Boca bar high

PHTB503 | 4-leg bar height

base spread | 24"

finish | BL ● black

materials | powder coated cast aluminum



Boca umbrella

PHTB502 | umbrella base standard height

base spread | 33"

finish | BL ● black

materials | powder coated cast aluminum

feature | umbrella compatible
(weighted umbrella base required)



Boca trestle

PHTB504 | trestle base standard height

base spread | 24" x 36.5"

supports | 32 x 48

finish | BL ● black

materials | powder coated cast aluminum

Belmar series



PH6101-L | left arm sofa

dimensions | h26 | w29 | d29

finish | SG ● soft gray | BL ● black

materials | aluminum powder coat

features | 6" seat cushion with wedge design back | cushion D-hooks | sectional connection hooks | L sectional capability

cushion | sold separately | 25 colors available
upholstery found on pages 116 – 117



PH6101-R | right arm sofa

dimensions | h26 | w29 | d29

finish | SG ● soft gray | BL ● black

materials | aluminum powder coat

features | 6" seat cushion with wedge design back | cushion D-hooks | sectional connection hooks | L sectional capability

cushion | sold separately | 25 colors available
upholstery found on pages 116 – 117



PH6101-M | armless middle sofa

dimensions | h26 | w26 | d29

finish | SG ● soft gray | BL ● black

materials | aluminum powder coat

features | 6" seat cushion with wedge design back | cushion D-hooks | sectional connection hooks | L sectional capability

cushion | sold separately | 25 colors available
upholstery found on pages 116 – 117



PH6102 | armchair

dimensions | h26 | w29 | d29

finish | SG ● soft gray | BL ● black

materials | aluminum powder coat

features | 6" seat cushion with wedge design back | cushion D-hooks

cushion | sold separately | 25 colors available
upholstery found on pages 116 – 117

PH6106 | ottoman

dimensions | h12 | w28 | d28

finish | SG ● soft gray | BL ● black

materials | aluminum powder coat

features | 6" seat cushion

cushion | sold separately | 25 colors available
upholstery found on pages 116 – 117

PH6104 | coffee table

dimensions | h16 | w47 | d23.4

finish | SG ● soft gray | BL ● black

materials | aluminum powder coat

feature | large 2" legs with slat design surface



PH6105 | end table

dimensions | h16 | w21.5 | d21.5

finish | SG ● soft gray | BL ● black

materials | aluminum powder coat

feature | large 2" legs with slat design surface

Aruba series



PH5101JV-L/R | left or right arm sofa

dimensions | h26 | w29 | d29

finish | java

materials | aluminum | synthetic wicker

features | 4" seat cushion with wedge design back | cushion D-hooks | sectional connection hooks | L sectional capability

cushion | sold separately | 25 colors available
upholstery found on pages 116 – 117



PH5101JV-M | armless middle sofa

dimensions | h26 | w22 | d29

PH5101JV-MW | large middle sofa

dimensions | h26 | w29 | d29

finish | java

materials | aluminum | synthetic wicker

features | 4" seat cushion with wedge design back | cushion D-hooks | sectional connection hooks | L sectional capability

cushion | sold separately | 25 colors available
upholstery found on pages 116 – 117



PH5101JV-C | corner sofa

dimensions | h26 | w29 | d29

finish | java

materials | aluminum | synthetic wicker

features | 4" seat cushion with wedge design back | cushion D-hooks | sectional connection hooks | L sectional capability

cushion | sold separately | 25 colors available
upholstery found on pages 116 – 117



PH5102JV | armchair

dimensions | h26 | w29 | d29

finish | java

materials | aluminum | synthetic wicker

features | 4" seat cushion with wedge design back | cushion D-hooks

cushion | sold separately | 25 colors available
upholstery found on pages 116 – 117

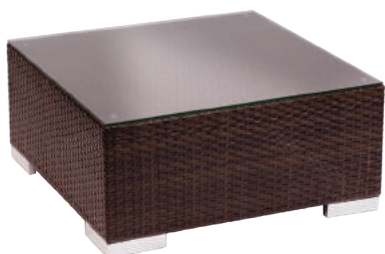
PH5106JV | ottoman

dimensions | h14 | w25 | d25

finish | java

materials | aluminum | synthetic wicker

features | 4" seat cushion

cushion | sold separately | 25 colors available
upholstery found on pages 116 – 117

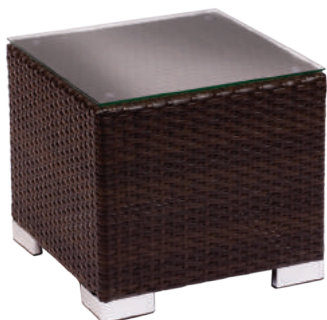
PH5104JV | coffee table

dimensions | h14 | w30 | d30

finish | java

materials | aluminum | synthetic wicker

feature | tempered glass sold separately



PH5105JV | end table

dimensions | h16 | w18 | d18

java

materials | aluminum, synthetic wicker

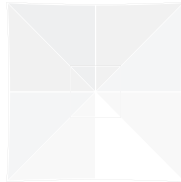
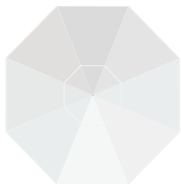
feature | tempered glass sold separately

Fiberglass Market umbrellas









Octagon Frame - Pacific Blue 9 oz. Marine Grade Acrylic Fabric

PULLEY LIFT



AVAILABLE FRAME SIZES

U7.5F: 7.5' OCTAGON	U9F: 9' OCTAGON	U11F: 11' OCTAGON	U6.5F: 6.5' SQUARE	U7.5SQF: 7.5' SQUARE
A: height: 97"	A: height: 108"	A: height: 108"	A: height: 100"	A: height: 108"
B: clearance: 75"	B: clearance: 76"	B: clearance: 83"	B: clearance: 87"	B: clearance: 86"
C: upper pole 66"	C: upper pole 69"	C: upper pole 77"	C: upper pole 69"	C: upper pole 77"
D: lower pole: 37"	D: lower pole: 37"	D: lower pole: 37"	D: lower pole: 37"	D: lower pole: 37"
mast diameter: 1.5"	mast diameter: 1.5"	mast diameter: 1.5"	mast diameter: 1.5"	mast diameter: 1.5"
weight: 16 lbs.	weight: 20 lbs.	weight: 22 lbs.	weight: 15 lbs.	weight: 18 lbs.
frame finish	SV  silver SM  silver mist WG  wood grain BL  black BZ  bronze WH  white			



COMMERCIAL PULLEY SYSTEM

HIGH IMPACT POLYMER JOINTS AND
.5" FIBERGLASS RIBS

1.5" DIAMETER CENTER POLE

HIGH IMPACT TPU COPOLYMER FINIALS

Standard: CLASSIC BALL FINIAL
Finial will match selected frame finishOptional: VERTEX FINIAL
Finial will match selected frame finish

FEATURES

Smooth and effortless pulley system.

1/2" fiberglass ribs and struts for maximum strength and flexibility.

1.5" diameter center pole with a 1/8" aluminum wall thickness provides incredible strength and durability.

Stainless steel grommets attach the canopy securely to the frame.

Modular design.

Stainless steel hardware throughout.

BASE OPTIONS

UB100RSM aluminum shell (page 64) | UB70RD resin coated concrete (page 64) | UB50RD resin coated concrete (page 64)

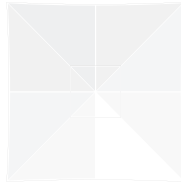
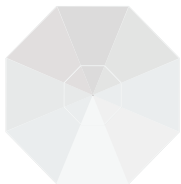
UB75SQ steel plate (page 64) | UBBD camlock (page 68) | UBG24RSM galvanized steel (page 65) | UBG30RSM galvanized steel (page 65)

Crank Lift Fiberglass umbrellas



Octagon Frame - Pacific Blue 9 oz. Marine Grade Acrylic Fabric

COMMERCIAL CRANK LIFT - NO TILT



AVAILABLE FRAME SIZES

U7.5FMC: 7.5' OCTAGON	U9FC: 9' OCTAGON	U11FC: 11' OCTAGON	U6.5FC: 6.5' SQUARE	U7.5SQFC: 7.5' SQUARE
A: height: 97"	A: height: 108"	A: height: 108"	A: height: 100"	A: height: 108"
B: clearance: 75"	B: clearance: 76"	B: clearance: 83"	B: clearance: 87"	B: clearance: 86"
C: upper pole 66"	C: upper pole 69"	C: upper pole 77"	C: upper pole 69"	C: upper pole 77"
D: lower pole: 37"	D: lower pole: 37"	D: lower pole: 37"	D: lower pole: 37"	D: lower pole: 37"
mast diameter: 1.5"	mast diameter: 1.5"	mast diameter: 1.5"	mast diameter: 1.5"	mast diameter: 1.5"
weight: 17 lbs.	weight: 22 lbs.	weight: 24 lbs.	weight: 18 lbs.	weight: 21 lbs.
frame finish	SV silver SM silver mist WG wood grain BL black BZ bronze WH white			



COMMERCIAL
CRANK SYSTEM



HIGH IMPACT POLYMER JOINTS AND
.5" FIBERGLASS RIBS



1.5" DIAMETER CENTER POLE

HIGH IMPACT TPU COPOLYMER FINIALS



Standard: CLASSIC BALL FINIAL
Finial will match selected frame finish.



Optional: VERTEX FINIAL
Finial will match selected frame finish.

FEATURES

316 cast solid stainless steel crank handle and axle.

1/2" fiberglass ribs and struts for maximum strength and flexibility.

1.5" diameter center pole with a 1/8" aluminum wall thickness provides incredible strength and durability.

Stainless steel grommets attach the canopy securely to the frame.

Modular design.

Stainless steel hardware throughout.

BASE OPTIONS

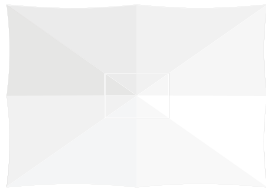
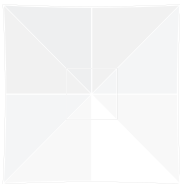
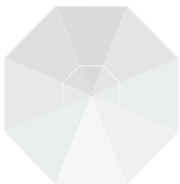
UB100RSM aluminum shell (page 64) | UB70RD resin coated concrete (page 64) | UB50RD resin coated concrete (page 64)

UB75SQ steel plate (page 64) | UBBD camlock (page 68) | UBG24RSM galvanized steel (page 65) | UBG30RSM galvanized steel (page 65)

G-Series Fiberglass Market umbrellas



Octagon Frame - Pacific Blue 9 oz. Marine Grade Acrylic Fabric



AVAILABLE FRAME SIZES

U13F: 13' OCTAGON

U10F 10' SQUARE

U8511F: 8.5' x11' RECTANGLE

A: height: 115"	A: height: 115"	A: height: 115"
B: clearance: 85"	B: clearance: 87"	B: clearance: 86"
closed clearance: 20"	closed clearance: 23"	closed clearance: 23"
mast diameter: 2"	mast diameter: 2"	mast diameter: 2"
weight: 38 lbs.	weight 36 lbs.	weight 33 lbs.
standard frame finish	● SV silver	



POLISHED SILVER ANODIZED
ALUMINUM FINISH



HIGH IMPACT POLYMER JOINTS AND
.75" FIBERGLASS RIBS



COMMERCIAL
DOUBLE PULLEY SYSTEM

MARINE GRADE CHROME PLATED ALUMINUM FINIALS



Standard: CLASSIC BALL FINIAL



Optional: VERTEX FINIAL

FEATURES

Smooth and effortless double pulley system.

.75" diameter fiberglass ribs and struts support this giant canopy, and provides strength and rigidity.

2" diameter single piece aluminum center pole is 3 mm thick, provides incredible strength and durability.

Modular design.

Stainless steel hardware throughout.

Multiple mounting options are available, either semi-permanent or base mounted.

BASE OPTIONS

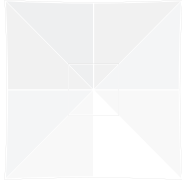
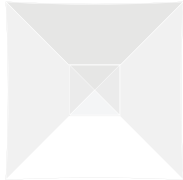
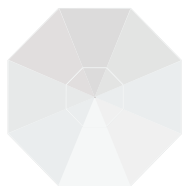
UBG36RSM galvanized steel (page 65) | UBG40RSM galvanized steel (page 66) | UB480 heavy duty wheel (page 66)

UB150RSM aluminum shell (page 65)


Aluminum Market umbrellas



Octagon Frame - Pacific Blue 9 oz. Marine Grade Acrylic Fabric



AVAILABLE FRAME SIZES

U7.5ASV: 7.5' OCTAGON	U9ASV: 9' OCTAGON	U11ASV: 11' OCTAGON	U6.5ASV: 6.5' SQUARE	U7.5SQASV: 7.5' SQUARE
A: height: 94"	A: height: 108"	A: height: 108"	A: height: 100"	A: height: 108"
B: clearance: 71"	B: clearance: 76"	B: clearance: 83"	B: clearance: 87"	B: clearance: 86"
C: upper pole 63"	C: upper pole 69"	C: upper pole 77"	C: upper pole 69"	C: upper pole 77"
D: lower pole: 37"	D: lower pole: 37"	D: lower pole: 37"	D: lower pole: 37"	D: lower pole: 37"
mast diameter: 1.5"	mast diameter: 1.5"	mast diameter: 1.5"	mast diameter: 1.5"	mast diameter: 1.5"
weight: 17 lbs.	weight: 22 lbs.	weight: 24 lbs.	weight: 15 lbs.	weight: 21 lbs.
standard frame finish	SV  silver			



POLISHED SILVER ANODIZED
ALUMINUM FINISH



HIGH IMPACT POLYMER JOINTS AND
EXTRUDED ALUMINUM RIBS



COMMERCIAL PULLEY SYSTEM

MARINE GRADE CHROME PLATED ALUMINUM FINIALS



Standard: VERTEX FINIAL



Optional: CLASSIC BALL FINIAL

FEATURES

Smooth and effortless pulley system.

Ergonomically designed ribs maintain the shape and provide added strength.

1.5" diameter, 1/8" wall thickness aluminum center pole provides incredible strength and durability.

Stainless steel hardware throughout.

Multiple mounting options are available, either semi-permanent or base mounted.

BASE OPTIONS

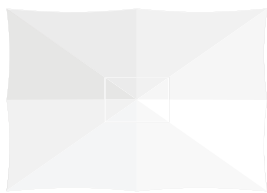
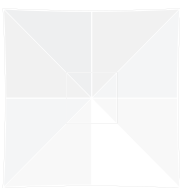
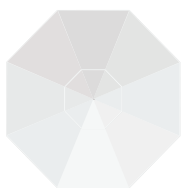
UB100RSM aluminum shell (page 64) | UB70RD resin coated concrete (page 64) | UB50RD resin coated concrete (page 64)

UB75SQ steel plate (page 64) | UBBD camlock (page 68) | UBG24RSM galvanized steel (page 65) | UBG30RSM galvanized steel (page 65)

G-Series Aluminum Market umbrellas



Octagon Frame - Pacific Blue 9 oz. Marine Grade Acrylic Fabric




AVAILABLE FRAME SIZES

U13ASV: 13' OCTAGON

U10ASV: 10' SQUARE

U8511ASV: 8.5' x11' RECTANGLE

A: height: 115"	A: height: 115"	A: height: 115"
B: clearance: 85"	B: clearance: 87"	B: clearance: 86"
closed clearance: 20"	closed clearance: 23"	closed clearance: 23"
mast diameter: 2"	mast diameter: 2"	mast diameter: 2"
weight: 38 lbs.	weight 36 lbs.	weight 33 lbs.
standard frame finish	SV  silver	



POLISHED SILVER ANODIZED
ALUMINUM FINISH



HIGH IMPACT POLYMER JOINTS AND
EXTRUDED ALUMINUM RIBS



COMMERCIAL
DOUBLE PULLEY SYSTEM

MARINE GRADE CHROME PLATED ALUMINUM FINIALS



Standard: VERTEX FINIAL



Optional: CLASSIC BALL FINIAL

FEATURES

Smooth and effortless double pulley system.

Ergonomically designed ribs maintain the shape and provide added strength.

2" diameter single piece aluminum center pole is 3 mm thick, provides incredible strength and durability.

Stainless steel hardware throughout.

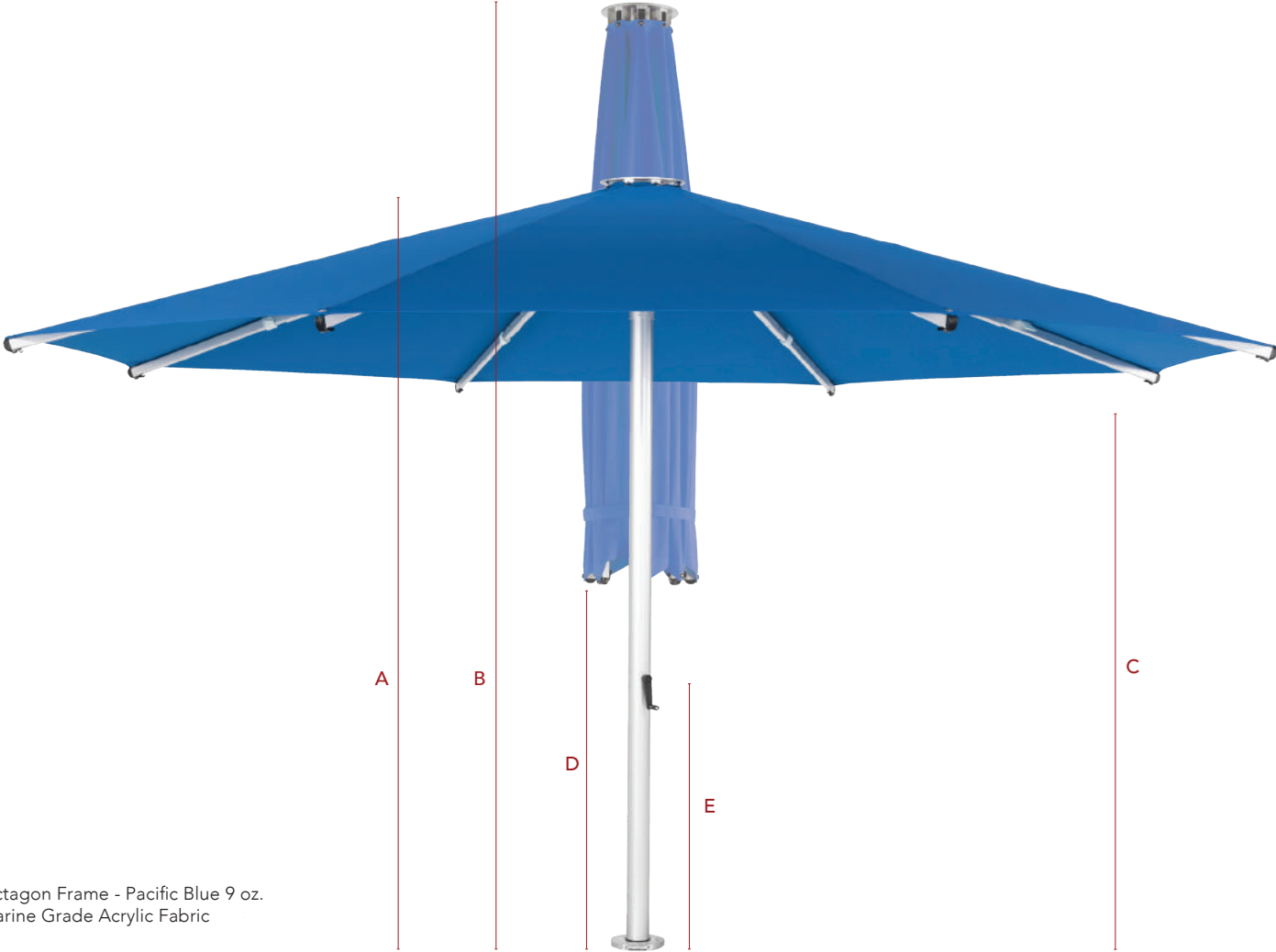
Multiple mounting options are available, either semi-permanent or base mounted.

BASE OPTIONS

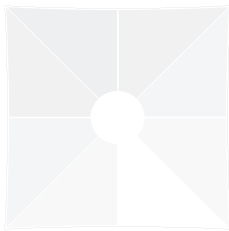
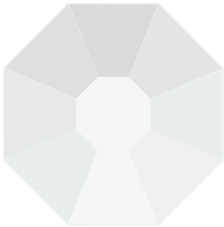
BG36RSM galvanized steel (page 65) | UBG40RSM galvanized steel (page 66) | UB480 heavy duty wheel (page 66)

UB150RSM aluminum shell (page 65)

Bolt-Down umbrellas




Octagon Frame - Pacific Blue 9 oz.
Marine Grade Acrylic Fabric



AVAILABLE FRAME SIZES

UBD16R: 16' OCTAGON

UBD13SQ: 13' SQUARE

A: open height: 126"	A: open height: 126"
B: closed height: 170"	B: closed height: 170"
C: clearance: 98"	C: clearance: 96"
D: crank clearance: 43"	D: closed clearance: 53"
E: mast diameter: 4"	mast diameter: 4"
weight: 260 lbs.	E: weight: 220 lbs.
standard frame finish	SM  silver mist



TELESCOPING MAST



DOUBLE REINFORCED JOINTS



EXTRUDED ALUMINUM MAST

FEATURES

As the telescoping cranks down, the top portion of the mast rises, allowing you to completely close the umbrella without having to move any furniture placed underneath.

4" diameter aluminum center pole with four internal strength channels, combined with the extruded aluminum ribs provide exceptional support and strength.

For easier installation of an umbrella this large, the mounts to a hinged spigot. This allows for the umbrella mast to be placed onto the spigot while the unit is on its side, prior to raising it to an upright position.

Reinforced grommets paired with an ultra-durable woven nylon wrap prevent the chance of fabric tearing from the frame.

Engineered to withstand 50-60 MPH sustained winds.

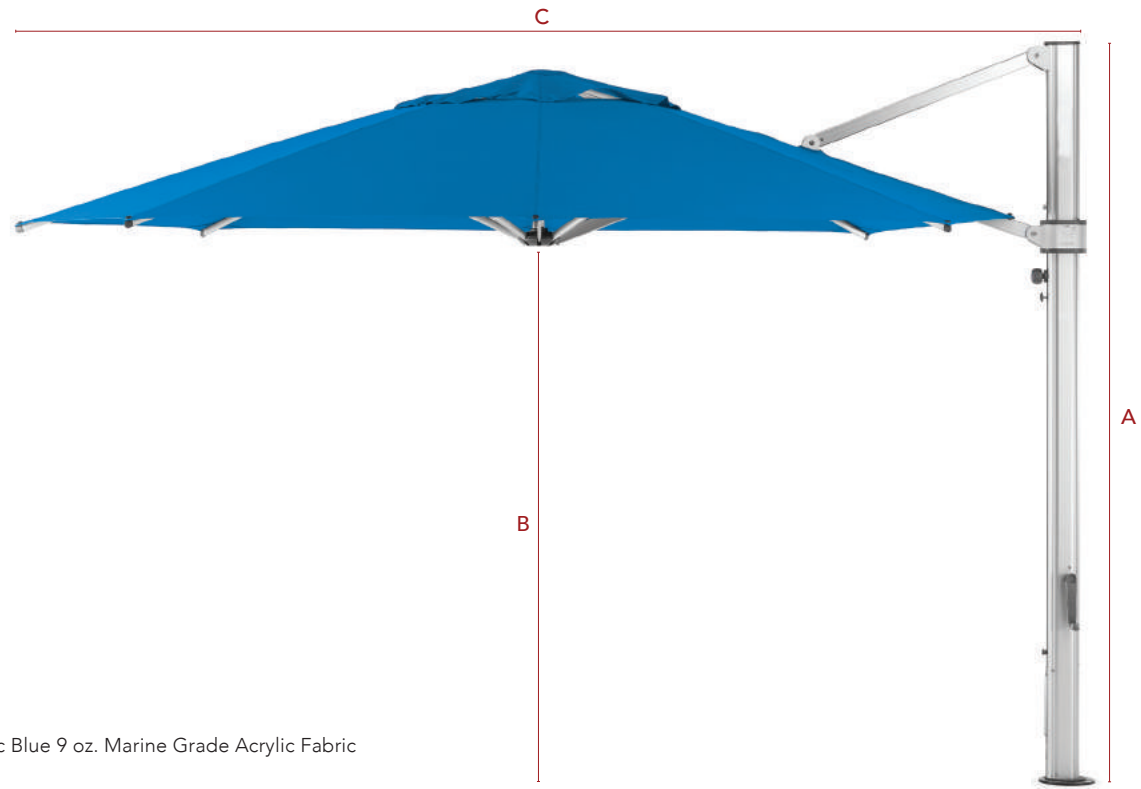
Stainless steel hardware throughout.

Please consult a licensed professional for in-ground or surface mounting installations.

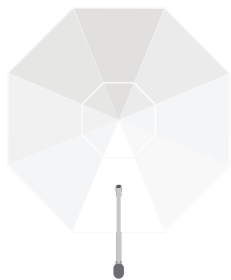
BASE OPTIONS

UB550 heavy duty (page 67) | UBINGF (page 68) in-ground mount | UB20DP direct surface (page 67)

Cantilever umbrellas




Octagon Frame - Pacific Blue 9 oz. Marine Grade Acrylic Fabric

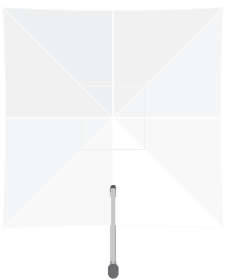


AVAILABLE FRAME SIZES

UC13R: 13' OCTAGON

A: height: 112"	A: height: 112"
B: clearance: 82"	B: clearance: 82"
C: open depth: 163"	C: open depth: 135"
closed depth: 18"	closed depth: 18"
mast diameter: 3.3" x 5"	mast diameter: 3.3" x 5"
weight: 140 lbs.	weight: 120 lbs.
frame finish	SM  silver mist

special feature: wind stabilizer bars and black polyester protective cover included.



UC10SQ: 10' SQUARE



INFINITY TILT

EXTRUDED ALUMINUM ON ALL
CRITICAL JOINTS

EXTRUDED ALUMINUM MAST

FEATURES

Full 360° rotation, combined with the Infinity Tilt system, allows for countless tilt angles, providing hours of maximum shade regardless of the position of the sun.

The crank lift is built for commercial use, yet designed for smooth and effortless operation in any environment.

The mast and all critical joints are extruded aluminum, ensuring unmatched strength and durability.

Engineered to withstand 35 MPH winds. Included wind stabilizer kit increases by 5 MPH.

Stainless steel hardware throughout.

Please consult a licensed professional for in-ground or surface mounting installations.

BASE OPTIONS

UBG40R555 galvanized steel (page 66) | UB550 heavy duty (page 67) | UB12DP direct surface (page 67)

UBINGF in-ground mount (page 68) | UBXDRUM cantilever mast extension (page 68)

Umbrella bases



UB50RD | resin coated concrete base for use with umbrella tables





weight | 50 lbs.

diameter | 16"

height | 7"

stem heights | n/a

stem diameter | 1.5"

finish | SM  silver mist | BL  black | BZ  bronze | WH  white



UB75SQ | steel plate base for stand alone umbrellas

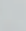
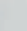


weight | 75 lbs.

diameter | 24"

height | 5"

stem heights | 16"

stem diameter | 1.5"

finish | SM  silver mist | BL  black | BZ  bronze | WH  white

features | wheels for easy transport,can be secured directly to surface
not guaranteed in salt air



UB70RD | resin coated concrete base





weight | 70 lbs.

diameter | 20"

height | 3.5"

stem heights | 8

stem diameter | 1.5"

finish | WH  white | SM  silver mist | BL  black | BZ  bronze

features | resin coated, concrete filled. 2 piece base, secondary weight ring fits onto base



UB100RSM | aluminum shell base


weight | 100 lbs.

diameter | 24"

height | 4"

stem heights | 8" / 18"

stem diameter | 1.5"

finish | SM  silver mist

features | concrete filled, wheels



UB150RSM | aluminum shell base

weight | 150 lbs.

diameter | 30"

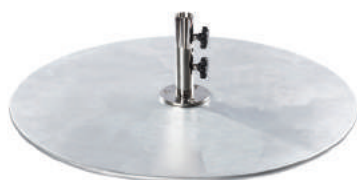
height | 4"

stem height | 18"

stem diameters | 1.5" / 2"

finish | SM ● silver mist

features | concrete filled, wheels



UBG24RSM | galvanized steel plate base

weight | 70 lbs.

diameter | 24"

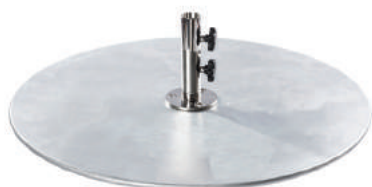
base height | .5"

stem heights | 8"

stem diameters | 1.5"

finish | SM ● silver mist

feature | can stack up to 3 of any G-Plates for increased weight and footprint



UBG30RSM | galvanized steel plate base

weight | 100 lbs.

diameter | 30"

base height | .5"

stem heights | 18"

stem diameters | 1.5"

finish | SM ● silver mist

feature | can stack up to 3 of any G-Plates for increased weight and footprint



UBG36RSM | galvanized steel plate base

weight | 150 lbs.

diameter | 36"

base height | .5"

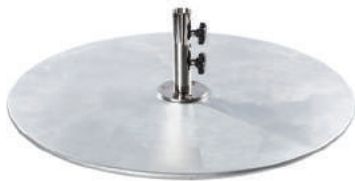
stem heights | 18"

stem diameters | 1.5" / 2"

finish | SM ● silver mist

feature | can stack up to 3 of any G-Plates for increased weight and footprint

Umbrella bases



UBG40RSM galvanized steel plate base
weight 185 lbs.
diameter 40"
base height .5"
stem heights 8"
stem diameters 1.5" / 2"
finish SM ● silver mist
feature can stack up to 3 of any G-Plates for increased weight and footprint



UBG40R555 galvanized steel plate stack
weight 555 lbs.
diameter 40"
base height 2"
stem heights n/a
stem diameters n/a
finish SM ● silver mist
features triple 40G stack is a required base option for the Cantilever, all 3 plates bolt together, spigot mounts to top plate



UB480 heavy duty wheel base (minimum weight required 480 lbs)
weight 480 lbs.
diameter 33 x 34"
height 10.5" with wheels 6.5" w/o wheels
stem heights n/a
stem diameters n/a
finish SM ● silver mist
features Holds three 16" pavers per quadrant (12 total pavers). Minimum paver weight per quadrant must be 105 lbs. (35 lbs. per paver) for 2" diameter pole G-series umbrellas



UB550 | heavy duty base

weight | 550 lbs.

diameter | 45 x 45"

height | 5"

stem heights | n/a

stem diameters | n/a

finish | SM ● silver mist

features | galvanized steel frame, smooth aluminum lid housing pavers, bolt-down or cantilever spigot mounts directly to universal deck plate on lid



UB12DP | direct surface mounting plate for cantilever

weight | 12 lbs.

diameter | 12"

height | 5"

stem heights | n/a

stem diameters | n/a

finish | BL ● black

features | direct surface mounting deck plate, can be mounted to concrete or wood deck or any stable solid surface



UB20DP | direct surface mounting plate for bolt-down

weight | 20 lbs.

diameter | 20"

height | .5"

stem heights | n/a

stem diameters | n/a

finish | SM ● silver mist

features | direct surface mounting deck plate, can be mounted to concrete, wood deck, or any stable solid surface

Umbrella bases



UBXDRUM | cantilever mast extension drum

weight | 22 lbs.

extension height | 12"

diameter | 8"

finish | BL ● black

features | Mast extension drum for cantilever umbrellas, mounts directly to the corresponding deck plate or in-ground mount cantilever mounts to drum, extending the overall canopy clearance



UBBD | camlock surface mount

weight | 9 lbs.

stem height | 18"

plate diameter | 4"

stem diameter | 1.5"

finish | SM ● silver mist

features | Direct surface mounting plate. Concrete or wood deck or any stable solid surface. Stem can be removed for storage. (HARDWARE NOT INCLUDED)



UBINGF | in-ground mount for bolt-down & cantilever

weight | 18 lbs.

diameter | 18.5"

height | 20"

stem heights | n/a

stem diameters | n/a

finish | SM ● silver mist

features | in-ground mounting in soil, clay or concrete



Industrial seating

NV series



PRODUCT INFORMATION

JS44CASH-AASB side chair dimensions | h32.5 | w17 | sh18.5 | sd17

JS44BASH-AASB barstool dimensions | h43.5 | w19 | sh29 | sd17

frame finish SB ● sand black

wood finish AA ● autumn ash veneer

materials solid steel rod | ash wood

seat options wood | upholstered

feature upholstery found on pages 113 – 115 | C.O.M.

Hamilton series



PRODUCT INFORMATION

JS10CNTV-NTPL	side chair dimensions h32 w18 sh18 sd16.5
JS10BNTV-NTPL	barstool dimensions h42 w18 sh29 sd16.5
frame finish	PL ● platinum powder coat
wood finish	NTV ● natural veneer
materials	welded steel powder coat veneer
seat options	wood upholstery found on pages 113 – 115 C.O.M.

Memphis series



PRODUCT INFORMATION

JS33C+wood+frame	side chair dimensions h34.5 w17.25 sh18 sd18.5
JS33B+wood+frame	barstool dimensions h40.5 w16.25 sh30.25 sd15.5
frame finish	RU ● distressed SB ● sand black
wood finish	NT ● natural AA ● autumn ash GR ● gray ash
materials	welded box tube steel powder coat ash wood
seat options	wood upholstery found on pages 113 – 115 C.O.M.

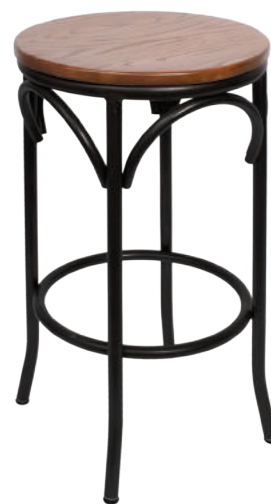
Lincoln series



PRODUCT INFORMATION

JS22CASH-CLCL	side chair dimensions h31 w15.5 sh18 sd13
JS22BASH-CL	barstool dimensions h42 w15.5 sh29 sd13
JS200BASH-CL	backless barstool dimensions h29 w19 sd13
frame finish	CL ● clear coat
back options	AA ● autumn ash wood CL ● clear coat stamped steel
seat options	wood upholstery found on pages 113 – 115 C.O.M.
materials	welded steel powder coat ash wood
feature	steel swivel guides with nylon floor protectors

Henry series



PRODUCT INFORMATION

JS88C+wood+frame	side chair dimensions h33.5 w16 sh17.5 sd15.5
JS88B+wood+frame	barstool dimensions h41 w16 sh29 sd15.5
JS800B+wood+frame	backless barstool dimensions h30 w15.5
frame finish	RU ● distressed SB ● sand black
seat options	wood upholstery found on pages 113 – 115 C.O.M.
seat wood finish	NT ● natural AA ● autumn ash
materials	welded tubular steel ash wood

Lima Clear Coat series



TRENT



PRODUCT INFORMATION

2160C+seat+CL	side chair dimensions h31 w15.5 sh18 sd13
2160B+seat+CL	barstool dimensions h42 w15.5 sh29 sd13
2510B+seat+CL	backless barstool dimensions h30 w16.5
frame finish	clear coat brass welds
standard vinyl colors	RDV ● red LBV ● light brown BUV ● burgundy GNV ● green DBV ● dark brown BLV ● black
wood seat colors	ASH ● autumn ash NTW ● natural CHW ● cherry MHW ● mahogany WAW ● walnut BLW ● black
materials	welded steel construction powder coat
features	brass welds upgraded vinyl options found on pages 112 – 115 C.O.M.



Steel seating

Axel series



PRODUCT INFORMATION

2140C+seat+SM side chair dimensions | h33 | w17.5 | sh18 | sd16.5

2140B+seat+SM barstool dimensions | h43.75 | w17.5 | sh30 | sd16.5

frame finish silver mist powder coat

standard vinyl colors RDV ● red | LBV ● light brown | BUV ● burgundy | GNV ● green | DBV ● dark brown
BLV ● black

wood seat colors ASH ● autumn ash | NTW ● natural | CHW ● cherry | MHW ● mahogany
WAW ● walnut | BLW ● black

materials welded 18 gauge steel

features upgraded vinyl options found on pages 112 – 115 | C.O.M.

Lima Silver Mist series



TRENT

PRODUCT INFORMATION

2160C+seat+SM side chair dimensions | h33 | w17.5 | sh18 | sd16.5

2160B+seat+SM barstool dimensions | h43.75 | w17.5 | sh30 | sd16.5

2510B+seat+SM backless barstool dimensions | h30 | w16 | sd16

frame finish silver mist powder coat

standard vinyl colors RDV ● red | LBV ● light brown | BUV ● burgundy | GNV ● green
DBV ● dark brown | BLV ● black

wood seat colors ASH ● autumn ash | NTW ● natural | CHW ● cherry | MHW ● mahogany
WAW ● walnut | BLW ● black

materials welded 18 gauge steel

features upgraded vinyl options found on pages 112 – 115 | C.O.M.

Lima series



PRODUCT INFORMATION

2160C+seat+SB	ladder back side chair dimensions h33 w17.5 sh18 sd16.5
2160B+seat+SB	ladder back barstool dimensions h43.75 w17.5 sh30 sd16.5
2160S+seat+SB	ladder back swivel barstool dimensions h42 w17.5 sh30 sd16.5
frame finish	sand black powder coat
standard vinyl colors	RDV ● red LBV ● light brown BUV ● burgundy GNV ● green DBV ● dark brown BLV ● black
wood seat colors	ASH ● autumn ash NTW ● natural CHW ● cherry MHW ● mahogany WAW ● walnut BLW ● black
materials	welded 18 gauge steel
features	upgraded vinyl options found on pages 112 – 115 C.O.M.

Troy series



PRODUCT INFORMATION

2090C+seat+SB	slat back side chair dimensions h33 w17.5 sh18 sd16.5
2090B+seat+SB	slat back barstool dimensions h43.75 w17.5 sh30 sd16.5
frame finish	sand black powder coat
standard vinyl colors	RDV ● red LBV ● light brown BUV ● burgundy GNV ● green DBV ● dark brown BLV ● black
wood seat colors	ASH ● autumn ash NTW ● natural CHW ● cherry MHW ● mahogany WAW ● walnut BLW ● black
materials	welded 18 gauge steel
features	upgraded vinyl options found on pages 112 – 115 C.O.M.

Dale series



PRODUCT INFORMATION

2150C+seat+back+SB	solid wood back side chair dimensions h33 w17.5 sh18 sd16.5
2150B+seat+back+SB	solid wood back barstool dimensions h43.75 w17.5 sh30 sd16.5
2150S+seat+back+SB	solid wood back swivel barstool dimensions h42.5 w17.5 sh30 sd16.5
frame finish	sand black powder coat
standard vinyl colors	RDV ● red LBV ● light brown BUV ● burgundy GNV ● green DBV ● dark brown BLV ● black
wood seat and back colors	NTW ● natural CHW ● cherry MHW ● mahogany WAW ● walnut
materials	welded 18 gauge steel
features	upgraded vinyl options found on pages 112 – 115 C.O.M.

Espy series



PRODUCT INFORMATION

2151C+seat+back+SB	slotted wood back side chair dimensions h33 w17.5 sh18 sd16.5
2151B+seat+back+SB	slotted wood back barstool dimensions h43.75 w17.5 sh30 sd16.5
2151S+seat+back+SB	slotted wood back swivel barstool dimensions h42.5 w17.5 sh30 sd16.5
frame finish	sand black powder coat
standard vinyl colors	RDV ● red LBV ● light brown BUV ● burgundy GNV ● green DBV ● dark brown BLV ● black
wood seat and back colors	NTW ● natural CHW ● cherry MHW ● mahogany WAW ● walnut
materials	welded 18 gauge steel
features	upgraded vinyl options found on pages 112 – 115 C.O.M.

Darby series



PRODUCT INFORMATION

2152C+seat+back+SB	circle wood back side chair dimensions h33 w17.5 sh18 sd16.5
2152B+seat+back+SB	circle wood back barstool dimensions h43.75 w17.5 sh30 sd16.5
2152S+seat+back+SB	circle wood back swivel barstool dimensions h42.5 w17.5 sh30 sd16.5
frame finish	sand black powder coat
standard vinyl colors	RDV ● red LBV ● light brown BUV ● burgundy GNV ● green DBV ● dark brown BLV ● black
wood seat and back colors	NTW ● natural CHW ● cherry MHW ● mahogany WAW ● walnut
materials	welded 18 gauge steel
features	upgraded vinyl options found on pages 112 – 115 C.O.M.

Marietta series



PRODUCT INFORMATION

2163C+seat+SB	window pane side chair dimensions h33 w17.5 sh18 sd16.5
2163B+seat+SB	window pane barstool dimensions h43.75 w17.5 sh30 sd16.5
2163S+seat+SB	window pane swivel barstool dimensions h42.5 w17.5 sh30 sd16.5
frame finish	sand black powder coat
standard vinyl colors	RDV ● red LBV ● light brown BUV ● burgundy GNV ● green DBV ● dark brown BLV ● black
wood seat colors	ASH ● autumn ash NTW ● natural CHW ● cherry MHW ● mahogany WAW ● walnut BLW ● black
materials	welded 18 gauge steel
features	upgraded vinyl options found on pages 112 – 115 C.O.M.

Polk series



PRODUCT INFORMATION

2161C+seat+SB	perforated back side chair dimensions h33 w17.5 sh18 sd16.5
2161B+seat+SB	perforated back barstool dimensions h40 w17.5 sh30 sd16.5
frame finish	sand black powder coat
standard vinyl colors	RDV ● red LBV ● light brown BUV ● burgundy GNV ● green DBV ● dark brown BLV ● black
wood seat colors	ASH ● autumn ash NTW ● natural CHW ● cherry MHW ● mahogany WAW ● walnut BLW ● black
materials	welded 18 gauge steel
features	upgraded vinyl options found on pages 112 – 115 C.O.M.

Akrin series



PRODUCT INFORMATION

2130C+seat+SB	cross back side chair dimensions h33 w17.5 sh18 sd16.5
2130B+seat+SB	cross back barstool dimensions h43.75 w17.5 sh30 sd16.5
2130S+seat+SB	cross back swivel barstool dimensions h42.5 w17.5 sh30 sd16.5
frame finish	sand black powder coat
standard vinyl colors	RDV ● red LBV ● light brown BUV ● burgundy GNV ● green DBV ● dark brown BLV ● black
wood seat colors	ASH ● autumn ash NTW ● natural CHW ● cherry MHW ● mahogany WAW ● walnut BLW ● black
materials	welded 18 gauge steel
features	upgraded vinyl options found on pages 112 – 115 C.O.M.

Trent series



PRODUCT INFORMATION

2510B+seat+CL metal barstool dimensions | h30 | w16 | sd16

2510B+seat+SM metal barstool dimensions | h30 | w16 | sd16

2510B+seat+SB metal barstool dimensions | h30 | w16 | sd16

frame finish CL ● clear coat | SM ● silver mist | SB ● sand black

standard vinyl colors RDV ● red | LBV ● light brown | BUV ● burgundy | GNV ● green
DBV ● dark brown | BLV ● black

wood seat colors ASH ● autumn ash | NTW ● natural | CHW ● cherry | MHW ● mahogany
WAW ● walnut | BLW ● black

materials welded 18 gauge steel

features upgraded vinyl options found on pages 112 – 115 | C.O.M.

Kyle series



PRODUCT INFORMATION

2520B-SM	swivel metal barstool dimensions h31.5 w16 sd14.5
2520B-SB	swivel metal barstool dimensions h31.5 w16 sd14.5
frame finish	SM ● silver mist SB ● sand black
standard vinyl colors	RDV ● red LBV ● light brown BUV ● burgundy GNV ● green DBV ● dark brown BLV ● black
materials	welded 18 gauge steel
features	upgraded vinyl options found on pages 112 – 115 C.O.M.



Wood seating

Sofia series



PRODUCT INFORMATION

ZWC88+finish+seat	side chair dimensions h33 w17.3 sh18 sd16
ZWB88+finish+seat	barstool dimensions h43 w16 sh30 sd14.8
frame finish	BW ● black walnut CS ● vintage
seat options	wood graded vinyls found on pages 113 – 115 C.O.M.
materials	european beechwood
feature	steamed bentwood european manufactured
construction	mortis and tenon metal hardware

Emma series



PRODUCT INFORMATION

ZWC22NT	side chair dimensions h34 w18 sh19 sd16
ZWB22NT	barstool dimensions h42 w18 sh30.25 sd17
frame finish	NT ● natural
seat options	wood graded vinyls found on pages 113 – 115 C.O.M.
materials	european beechwood
feature	modern mid-century design european manufactured
construction	mortis and tenon metal hardware

Giulia series



PRODUCT INFORMATION

ZWC66+finish+seat	side chair dimensions h30 w15 sh18 sd15
ZWB66+finish+seat	barstool dimensions h41.25 w15 sh30 sd15
frame finish	DW ● dark walnut NT ● natural BL ● black
seat options	wood graded vinyls found on pages 113 – 115 C.O.M.
materials	european beechwood
feature	space saving design european manufactured

Dover series



PRODUCT INFORMATION

SWC305+finish+seat	side chair dimensions h33 w17.5 sh19 sd16.5
SWB305+finish+seat	barstool dimensions h41.5 w17.5 sh31.5 sd15.75
frame finish	CW ● classic walnut EB ● ebony
seat options	wood graded vinyls found on pages 113 – 115 C.O.M.
materials	european beechwood
construction	mortis and tenon metal hardware
feature	barstool—brass footrest satin nickel finish available upon request

Merion series



PRODUCT INFORMATION

SWC30+seat	side chair dimensions h33 w17.5 sh19 sd16.5
SWB301+seat	barstool dimensions h41.5 w17.5 sh31.5 sd15.75
frame finish	CW ● classic walnut
seat options	wood graded vinyls found on pages 113 – 115 C.O.M.
materials	european beechwood
feature	brass footrest satin nickel finish available upon request

Weston series



PRODUCT INFORMATION

SWC304+finish+seat	side chair dimensions h33.25 w16 sh19 sd16
SWB304+finish+seat	barstool dimensions h43.5 w17 sh30.75 sd17.5
frame finish	CW ● classic walnut EB ● ebony
seat options	wood graded vinyls found on pages 113 – 115 C.O.M.
materials	european beechwood
construction	mortis and tenon metal hardware
feature	brass footrest satin nickel finish available upon request

Oxford series



PRODUCT INFORMATION

SWC306NT-TG	side chair dimensions h33.25 w16 sh19 sd16
SWB306NT-TG	barstool dimensions h43.5 w17 sh30.75 sd17.5
frame finish	NT ● natural TG ● tigerwood seat & back
seat options	wood graded vinyls found on pages 113 – 115 C.O.M.
materials	european beechwood
construction	mortis and tenon metal hardware
feature	brass footrest satin nickel finish available upon request

Columbia series



PRODUCT INFORMATION

SWC303CW+seat	side chair dimensions h34 w19 sh19 sd17
SWB303CW+seat	barstool dimensions h45 w18 sh31 sd17
frame finish	CW ● classic walnut
seat options	wood graded vinyls found on pages 113 – 115 C.O.M.
materials	european beechwood
construction	mortis and tenon metal hardware
feature	brass footrest satin nickel finish available upon request

Cornell series



PRODUCT INFORMATION

SWC302CW+seat side chair dimensions | h33.25 | w16 | sh19 | sd16

SWB302CW+seat barstool dimensions | h43.5 | w17 | sh30.75 | sd17.5

frame finish CW ● classic walnut

seat options wood | graded vinyls found on pages 113 – 115 | C.O.M.

materials european beechwood

construction mortis and tenon | metal hardware

feature brass footrest standard on barstool | satin nickel finish available upon request

Burlington series



PRODUCT INFORMATION

LWC101+finish+seat	ladder back side chair dimensions h34 w17.5 sh18 sd17
LWB101+finish+seat	ladder back barstool dimensions h44 w17 sh30.75 sd16
frame finish	MH ● mahogany NT ● natural BL ● black WA ● walnut CH ● cherry
wood seat finishes	MH ● mahogany NT ● natural BL ● black WA ● walnut CH ● cherry
standard vinyl colors	LBV ● light brown BUV ● burgundy GNV ● green BLV ● black
seat options	wood graded vinyls found on pages 112 – 115 C.O.M.
materials	european beechwood
construction	mortis and tenon metal hardware
feature	brass footrest standard on barstool satin nickel finish available upon request

Delran series



PRODUCT INFORMATION

LWC102+finish+seat	slat back side chair dimensions h34 w17.5 sh18 sd17
LWB102+finish+seat	slat back barstool dimensions h44 w17 sh30 sd16
frame finish	MH ● mahogany BL ● black
wood seat colors	MH ● mahogany BL ● black
standard vinyl colors	LBV ● light brown BUV ● burgundy GNV ● green BLV ● black
seat options	wood graded vinyls found on pages 112 – 115 C.O.M.
materials	european beechwood
construction	mortis and tenon metal hardware
feature	brass footrest standard on barstool satin nickel finish available upon request

Princeton series



PRODUCT INFORMATION

LWC7218+finish+seat	school side chair dimensions h34 w17.5 sh18.5 sd17
LWB7218+finish+seat	school barstool dimensions h44 w17 sh30 sd16
frame finish	MH ● mahogany WA ● walnut
wood seat finishes	MH ● mahogany WA ● walnut
standard vinyl colors	LBV ● light brown BUV ● burgundy GNV ● green BLV ● black
seat options	wood graded vinyls found on pages 112 – 115 C.O.M.
materials	european beechwood
construction	mortis and tenon metal hardware
feature	brass footrest standard on barstool satin nickel finish available upon request

Pennington series



PRODUCT INFORMATION

LWC629+finish+seat	window pane side chair dimensions h34 w17.5 sh18 sd17
LWB629+finish+seat	window pane barstool dimensions h45 w17 sh30 sd16
frame finish	MH ● mahogany CH ● cherry
wood seat finishes	MH ● mahogany CH ● cherry
standard vinyl colors	LBV ● light brown BUV ● burgundy GNV ● green BLV ● black
seat options	wood graded vinyls found on pages 112 – 115 C.O.M.
materials	european beechwood
construction	mortis and tenon metal hardware
feature	brass footrest standard on barstool satin nickel finish available upon request

Trevor series



PRODUCT INFORMATION

LWB680+finish+seat

backless barstool dimensions | h33.25 | w16 | sh19 | sd16

frame finish

MH ● mahogany | NT ● natural | BL ● black | WA ● walnut

wood seat finishes

MH ● mahogany | NT ● natural | BL ● black | WA ● walnut

standard vinyl colors

LBV ● light brown | BUV ● burgundy | GNV ● green | BLV ● black | RDV ● red
DBV ● dark brown

seat options

wood | graded vinyls found on pages 112 – 115 | C.O.M.

materials

european beechwood

construction

mortis and tenon | metal hardware

feature

brass footrest standard on barstool | satin nickel finish available upon request



Tables indoor

Wood Veneer table tops



VN2430 | 24 x 30

VN3030 | 30 x 30

VN3636 | 36 x 36

VN3042 | 30 x 42

VN3048 | 30 x 48

VN3060 | 30 x 60

VN3072 | 30 x 72

VN24 | 24R

VN30 | 30R

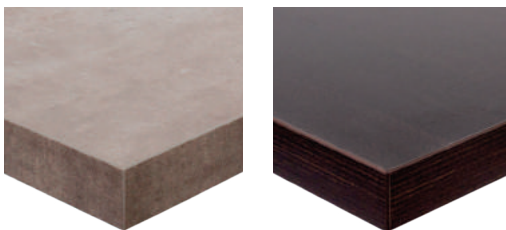
VN36 | 36R

VN48 | 48R

finish | AA ● autumn ash | NT ● natural

materials | 1¼" thick ash wood edge with ash wood veneer inlay

Midtown table tops



finish code+size | 24 x 24

finish code+size | 24 x 30

finish code+size | 30 x 30

finish code+size | 36 x 36

finish code+size | 30 x 42

finish code+size | 30 x 48

finish code+size | 30 x 60

finish code+size | 30 x 72

finish code+size | 24R

finish code+size | 30R

finish code+size | 36R

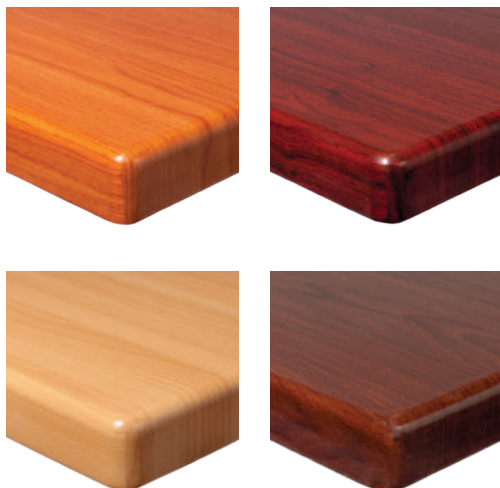
finish code+size | 45R

finish | CNT ● textured concrete | EST ● textured espresso
 SO ● textured sawmill oak | DW ● textured driftwood
 SF ● safari

materials | 1⅞" edge with honeycomb core | laminate surface
 with matching ABS edge



Resin table tops



TTRSN2424 | 24 x 24

TTRSN2430 | 24 x 30

TTRSN3030 | 30 x 30

TTRSN3636 | 36 x 36

TTRSN3042 | 30 x 42

TTRSN3048 | 30 x 48

TTRSN3060 | 30 x 60

TTRSN3072 | 30 x 72

TTRSN24 | 24R

TTRSN30 | 30R

TTRSN36 | 36R

TTRSN42 | 42R

TTRSN48 | 48R

finish | CH ● cherry | MH ● mahogany | NT ● natural
WA ● walnut

materials | 2" drop edge | high gloss epoxy resin

Double-sided laminate table tops



finish code+size | 24 x 24

finish code+size | 24 x 30

finish code+size | 30 x 30

finish code+size | 36 x 36

finish code+size | 24 x 42

finish code+size | 24 x 48

finish code+size | 30 x 42

finish code+size | 30 x 48

finish code+size | 24R

finish code+size | 30R

finish code+size | 36R

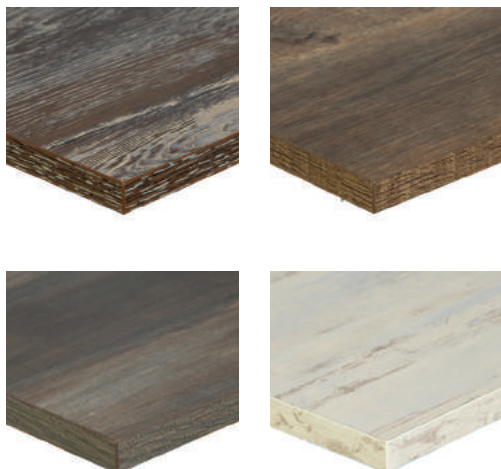
finish code+size | 42R

finish code+size | 48R

finish | MB ● mahogany/black | CM ● cherry/dark mahogany
WO ● walnut/oak

materials | double-sided laminate top with black t-mold edge

Relic table tops



finish code+size | 24 x 30

finish code+size | 30 x 30

finish code+size | 36 x 36

finish code+size | 30 x 42

finish code+size | 30 x 48

finish code+size | 30 x 60

finish | FH ● farmhouse | KP ● knotty pine | CS ● chestnut
AW ● antique wash

materials | melamine | matching PVC edge | 1" thick MDF core

Trash receptacles

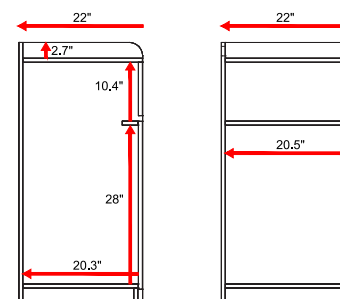


TE4622CS | trash receptacles

finish | CS ● chestnut

material | melamine | MDF

feature | holds standard 35 gallon plastic container, size 19"w x 19"D x 27"H



Trash receptacles



TE4622KP | trash receptacles

finish | KP ● knotty pine

material | melamine | MDF

feature | holds standard 35 gallon plastic container, size 19"w x 19"D x 27"H



TE4622AW | trash receptacles

finish | AW ● antique wash

material | melamine | MDF

feature | holds standard 35 gallon plastic container, size 19"w x 19"D x 27"H



TE4622FH | trash receptacles

finish | FH ● farmhouse

material | melamine | MDF

feature | holds standard 35 gallon plastic container, size 19"w x 19"D x 27"H

Indoor / Outdoor bases



Elite indoor | outdoor

PHTB+size+SQSS | square | dining height

PHTB size+SQSST | square base bar height

base spread | 18 x 18 | 24 x 24

top plate | 11.8" x 11.8"

materials | 304 brushed stainless steel

dining or bar height



Indoor

STB+size+height | cross base

base spread | 22 x 22 | 24 x 30 | 30 x 30
36 x 36

finish | sand black

materials | stamped steel

top plate | welded | BP bolt on plate

dining | C counter | B bar height

3" or 4" diameter columns (3" column welded plate
7.8 x 7.8" | 4" column welded plate 10.6 x 10.6" | 3" or 4"
column bolt-on plate 11.8 x 11.8")

Elite indoor | outdoor

PHTB18RSS | round | dining height

PHTB24RSST | round base bar height

base diameter | 18 | 24

top plate | 11.8" x 11.8"

materials | 304 brushed stainless steel

dining or bar height



Indoor

STB+size+height | round base

base diameter | 18 | 22 | 30

finish | sand black

materials | stamped steel

top plate | welded | BP bolt on plate

dining | C counter | B bar height

3" or 4" diameter columns (3" column welded plate
7.8 x 7.8" | 4" column welded plate 10.6 x 10.6" | 3" or 4"
column bolt-on plate 11.8 x 11.8")

Elite indoor | outdoor

PHTB0024SS | dining height (sold as pair)

PHTB0024SST | bar height (sold as pair)

base spread | 4 x 24

top plate | 11.8" x 11.8"

materials | 304 brushed stainless steel

feature | ADA capabilities



Indoor

STB-0022 | dining height (sold separately)

STB-0022T | bar height (sold separately)

base spread | 5 x 22 | 2 required per top

finish | sand black

materials | stamped steel

top plate | welded | BP bolt on plate

feature | ADA capabilities

C counter height available (3" column welded plate
7.8 x 7.8" | 4" column welded plate 10.6 x 10.6" | 3" or 4"
column bolt-on plate 11.8 x 11.8")Elite double column
indoor | outdoor

PHTB1630SS | dining height

PHTB1630SST | bar height

base spread | 16 x 30

top plate | 11.8" x 11.8"

materials | 304 brushed stainless steel



Indoor foot ring

STB+base size+TFR | base with foot ring

available in all cross and round sizes

finish | sand black

materials | stamped steel

top plate | welded | bolt on plate

feature | 3" or 4" diameter columns (3" column
welded plate 7.8 x 7.8" | 4" column welded plate 10.6 x 10.6")

Indoor / Outdoor bases

**Alpha** indoor | outdoor

PHTBBD+finish | bolt-down base

PHTBBDT+finish | bolt-down base

finish | SS stainless | BL black | SV silver

materials | 304 stainless steel

dining or bar height

feature | ADA capabilities | bolt down

**Margate** indoor | outdoor

PHTB+size+R | round | dining height

PHTB+size+RT | round | bar height

base dimension | 16 | 18 | 20 | 24

finish | BL black | SV silver

materials | powder coated | zinc plated cast iron | stainless steel column

features | center post base with umbrella capabilities, pinch nut

**Travis** indoorTB-TR+size+column+RB | round base
dining heightTB-TR+size+column+RBT | round base
bar height

base diameter | 18 | 22 | 30

finish | sand black

materials | cast iron

feature | ornate base plate

3" or 4" diameter columns

**Margate** indoor | outdoor

PHTB+size+SQ | square | dining height

PHTB+size+SQT | square | bar height

base plate | 16 x 16 | 18 x 18 | 20 x 20 | 24 x 24

finish | BL black | SV silver

materials | powder coated | zinc plated cast iron | stainless steel column

features | center post base with umbrella capabilities, pinch nut

**Niles** indoor

PHTB500 | round base | dining height

PHTB500T | round base | bar height

base diameter | 20

finish | sand black

materials | cast iron

feature | ornate base plate

**Bali end** indoor | outdoor

PHTB0022 | dining height (sold as pair)

PHTB0022T | bar height (sold as pair)

finish | BL black | SV silver

materials | powder coated | weighted cast aluminum

feature | compatible with Margate series

**Stamped chrome** indoor

STB-2222CH cross | 22 x 22

STB-2430CH cross | 24 x 30

STB-3030CH cross | 30 x 30

STB-0022CH end | 5 x 22 | 2 per top

finish | chrome

materials | stamped steel

features | 3" or 4" column

dining | counter | bar height

**Daphanie** indoor

TB-6001 | 4-leg base | dining height

TB-6005H | 4-leg base | bar height

base spread | 24

finish | sand black

materials | cast iron

feature | ornate design

Indoor bases



Adele

PHTB18RCH | 18" round | dining

PHTB18RCHT | 18" round | bar height

PHTB24RCH | 24" round | dining

PHTB24RCHT | 24" round | bar height

finish | chrome

materials | steel



Cantilever

TB-C22 | bracket 22" long

TB-C33 | bracket 33" long

TB-P125 | pin leg 1.25

finish | glossy black powder coat
black wrinkle (pin leg)

materials | welded steel

feature | wall mounting



Bolt-down base

TB-BD | base | dining height

TB-BDT | base | bar height

TB-BDC | base | counter height

finish | black wrinkle

materials | welded steel

feature | bolt cover plate



Corner Post leg

TB-SQ2 | 2" square post | dining height
(sold separately)TB-SQ3 | 3" square post | dining height
(sold separately)

finish | sand black

materials | steel and powder coat

feature | ADA capabilities



NV corner leg

NV4L-SB | dining height
(sold as set of 4)NV4L-SBT | bar height
(sold as set of 4)

finish | black

materials | solid rod steel

feature | matches NV chair series
ADA capabilities

I-beam

JSTB3636+height | 36 x 36

JSTB3048+height | 30 x 48

JSTB3648+height | 36 x 48

JSTB3060+height | 30 x 60

JSTB3660+height | 36 x 60

JSTB3072+height | 30 x 72

JSTB3672+height | 36 x 72

finish | black powder coat

materials | steel

features | electric outlet capability | frame manufactured
to conceal hardwiring
(Outlets & wiring not included. Cover plates included for unused outlet cutouts.)

dining height BL or bar height BLT

Metal frame wood seat options



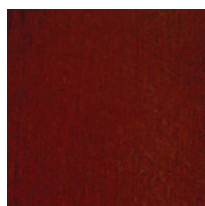
Natural



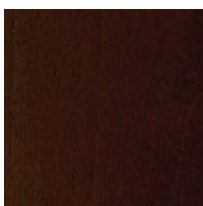
Cherry



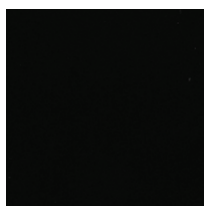
Autumn Ash



Mahogany



Walnut



Black

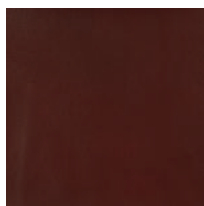
Grade 1 Vinyl



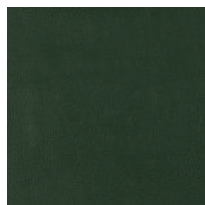
Red



Light Brown



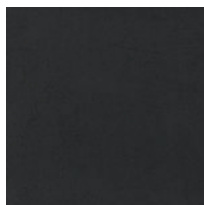
Burgundy



Green



Dark Brown



Black

Grade 2 Vinyl



American Beauty
VNS-001



Aqua Green
VNS-002



Avocado
VNS-003



Black Walnut
VNS-004



Blue Ridge
VNS-005



Bright Yellow
VNS-006



Burgundy
VNS-007



Chocolate Chip
VNS-008



Claret
VNS-009



Concord
VNS-010



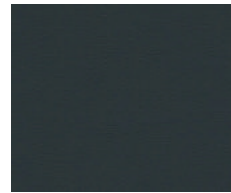
Ebony
VNS-013



Forest
VNS-016



Georgia Clay
VNS-017



Graphite
VNS-018



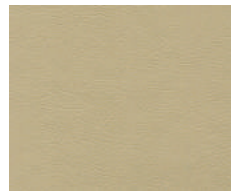
Indigo
VNS-020



Ivory
VNS-021



Kelly Green
VNS-023



Mushroom
VNS-025



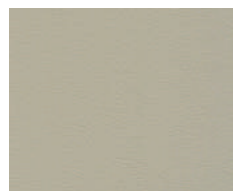
Pearl
VNS-027



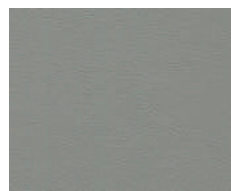
Royal Blue
VNS-029



Sand
VNS-030



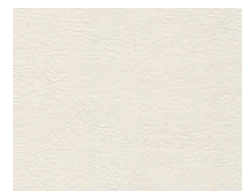
Silver Grey
VNS-031



Silver Surf
VNS-032



Sky Blue
VNS-033



Super White
VNS-034



Tan
VNS-035



Tea Rose
VNS-037



Tiger Lily
VNS-038

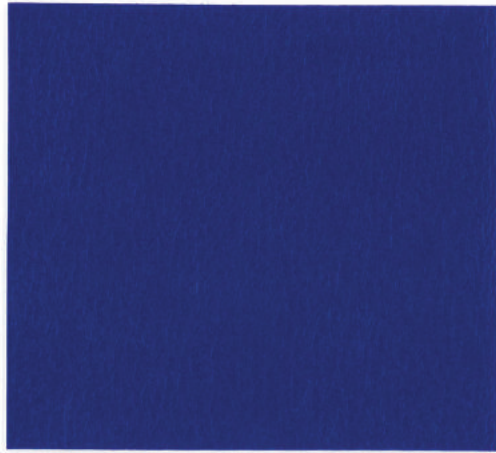


Yellow Gold
VNS-040

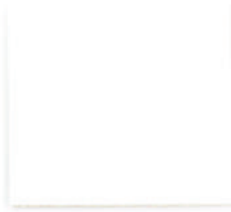


Yew Green
VNS-041

Grade 3 Vinyl



AM 37 Royal



AM 53 Bright White



AM 43 Adobe White



AM 59 Parchment



AM 45 Mauve



AM 64 Sand



AM 58 Sage



AM 60 Alabaster



AM 54 Dutch Blue



AM 61 Tea Rose



AM 56 Cinnabar



AM 46 Dusty Jade



AM 57 Bronze



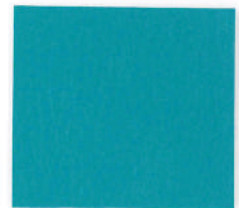
AM 51 Crocus



AM 62 Raspberry



AM 55 Tomato



AM 47 Turquoise



AM 44 Dove



AM 49 Blue Ridge



AM 52 Sangria



AM 39 American Beauty



AM 48 Grotto



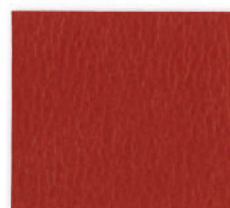
AM 63 Gunmetal



AM 35 Regimental Blue



AM 40 Plum



AM 65 Paprika



AM 34 Forest



AM 42 Black



AM 50 Imperial Blue



AM 41 Burgundy



AM 38 Claret



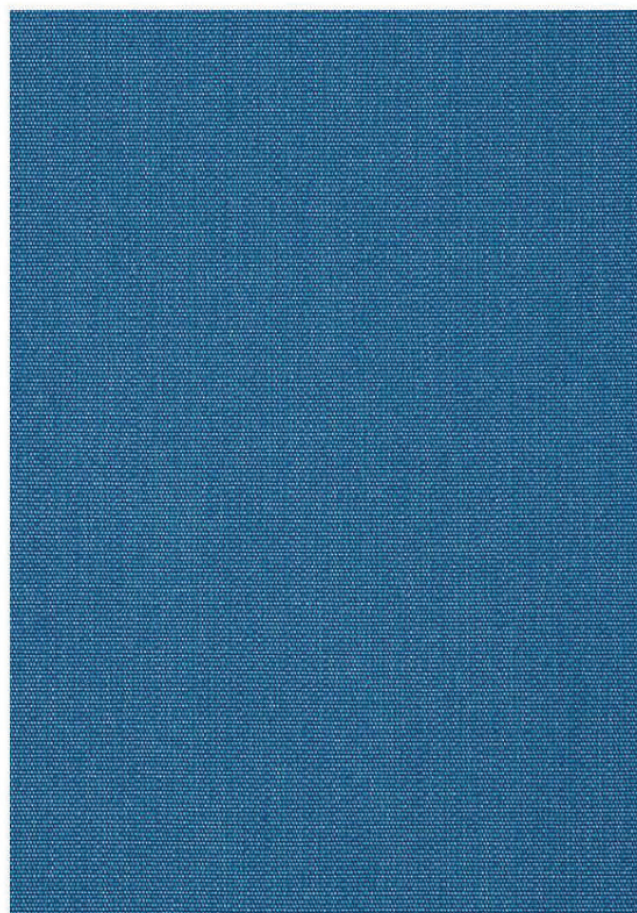
AM 36 Yew Green

Grade 4 Vinyl

							
Adobe White US 394	Ivory US 500	Coral Sand US 502	Froth US 501	Surf US 513	Fjord Blue US 517	Bristol Blue US 515	Pink US 503
							
Alabaster US 396	Parchment US 385	Shell US 402	Sand US 384	Dusty Jade US 417	Turquoise US 419	Dutch Blue US 518	Mauve US 415
							
Taupe US 410	Bone US 404	Peach US 406	Vicuna US 401	Northwoods US 528	Grotto US 426	Wedgewood US 414	Tea Rose US 416
							
Putty US 403	Bisque US 409	Rose US 412	Doe US 519	Lilac US 508	Sage US 526	Space Blue US 353	Rouge Red US 505
							
Gray Moss US 525	Dewberry US 424	Sunset US 521	Camel US 387	Crocus US 433	Artichoke US 527	Royal US 354	Raspberry US 362
							
Dove US 413	Woodrose US 423	Paprika US 370	Oak US 421	Deep Violet US 511	Olive Green US 529	Regimental Blue US 345	Dark Cherry US 507
							
Greystone US 425	Chestnut US 375	British Tan US 365	Terra Cotta US 376	Grape US 509	Alpine US 530	Imperial Blue US 432	American Beauty US 360
							
Gunmetal US 392	Bronze US 523	Gingersnap US 369	Cinnamon US 377	Sangria US 506	Forest US 344	Sky Blue US 516	Tomato US 358
							
Blue Ridge US 427	Mocha US 381	Cinnabar US 520	Goldenrod US 324	Plum US 361	Yew Green US 350	Capri Blue US 514	Rosalee US 504
							
Graphite US 429	Rustic Brown US 522	Claret US 357	Golden Corn US 524	Dark Purple US 512	Emerald US 343	China Green US 434	Mandarin Orange US 372
							
Black US 393	Espresso US 383	Burgundy US 364	Sun Yellow US 322	Concord US 510			

Sunbrella® Sofa Cushion Fabric

Aruba & Belmar series



Regatta
5493-0000



Mineral Blue
5420-0000



Sky Blue
5424-0000



Sapphire Blue
5452-0000



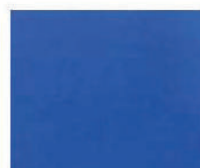
Air Blue
5410-0000



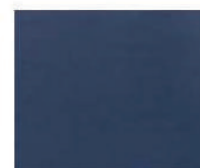
Pacific Blue
5401-0000



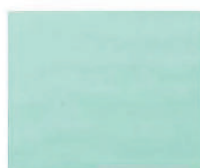
Capri
5426-0000



True Blue
5499-0000



Navy
5439-0000



Glacier
5428-0000



Aruba
5416-0000



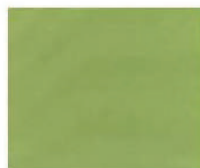
Teal
5456-0000



Spa
5413-0000



Forest Green
5446-0000



Palm
5421-0000



Fern
5487-0000



Ginkgo
54011-0000



Macaw
5429-0000



Parrot
5405-0000



Brass
5484-0000



Wheat
5414-0000



Buttercup
5438-0000



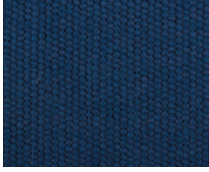
Sunflower
5457-0000

Sunbrella® Sofa Cushion Fabric

Aruba & Belmar series

				
Tangerine 5406-0000	Tuscan 5417-0000	Rust 54010-0000	Melon 5415-0000	Hot Pink 5462-0000
				
Blush 57000-0000	Logo Red 5477-0000	Jockey Red 5403-0000	Terracotta 5440-0000	Brick 5409-0000
				
Henna 5407-0000	Burgundy 5436-0000	Iris 57002-0000	Dusk 5491-0000	Heather Beige 5476-0000
				
Camel 5468-0000	Chestnut 57001-0000	Cocoa 5425-0000	Taupe 5461-0000	Cork 5448-0000
				
Raven Black 5471-0000	Black 5408-0000	Walnut 5470-0000	Bay Brown 5432-0000	Teak 5488-0000
				
Coal 5489-0000	Charcoal 54048-0000	Granite 5402-0000	Antique Beige 5422-0000	Vellum 5498-0000
				
Flax 5492-0000	Birds Eye 5472-0000	Canvas 5453-0000	Natural 5404-0000	White 57003-0000

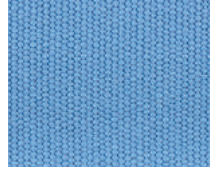
Umbrella Fabric



NBA: Navy Blue



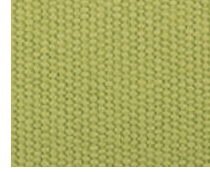
PBA: Pacific Blue



CPA: Capri



TQA: Turquoise



PTA: Pistachio



FGA: Forest Green



BGA: Burgundy



LRA: Logo Red



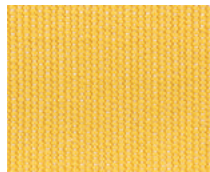
CRA: Coral



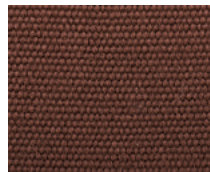
TRA: Terracotta



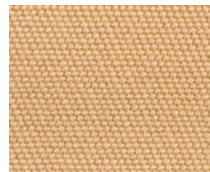
ORA: Orange



YLA: Sunflower



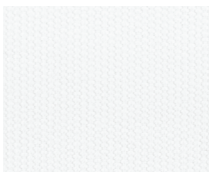
BNA: Brown



TTA: Toast



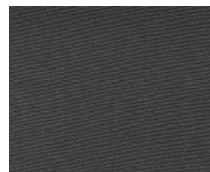
LNA: Linen



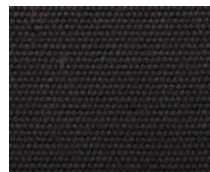
WHA: White



CGA: Cadet Gray



CHGA: Charcoal



BKA: Black

STRIPES REPEATING PATTERN: 6.4"



RSA: Red Stripe



OSA: Orange Stripe



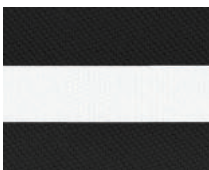
YSA: yellow Stripe



BSA: Blue Stripe



TQSA: Turquoise Stripe



BKSA: Black Stripe

Terms & Conditions

Orders & Cancellations

All orders, order changes or cancellations must be placed in writing by fax or e-mailed to orders@bfm1.com. Special orders require a 50% deposit. Canceled orders that have been assembled are subject to a minimum 25% restocking charge plus any material and labor charges not covered by the minimum restock charge.

Customers are responsible for any and all costs expended by BFM for changes or cancellations including but not limited to special upholstery, production and labor costs. Custom upholstered/manufactured items such as but not limited to umbrellas, sofa cushions/pillows & seats cannot be canceled once production has started.

Terms and Conditions

Credit terms are established on an individual basis. Special orders require a 50% deposit. Product not picked up or shipped within 30 days needs to be paid for in full to continue to be held for an additional 30 days. Product held beyond 60 days will incur a 1.5% storage charge per month beginning on the 61st day.

Returns

Merchandise cannot be returned without a written return authorization. Approved returns are subject to a minimum 25% restocking charge. Freight out and return freight will be the customer's responsibility. Return will be approved upon inspection. If you wish to return your product, simply call 215-289-5411 or email us at returns@bfm1.com for a return authorization number (RA). All returns must be in the original condition and packaging. All returns will be subject to a 25% restocking fee.

Please Note: Any product ordered that has been custom built or manufactured includes but is not limited to; umbrellas, sofa cushions/pillows, custom upholstered seats are not returnable.

Freight & Freight Claims

BFM will ship by our carrier unless instructed otherwise on purchase order. All shipments are FOB our Philadelphia warehouse. PO must specify Prepaid & Add, Third Party or Freight Collect. BFM reserves the right to ship items FOB factory as circumstances may dictate. When the freight leaves our facility it is signed for in good order by the freight carrier. At this point the freight is no longer ours. It is the responsibility of the consignee to inspect the goods upon arrival. In the event there is not time to open cartons and inspect all items, the bill of lading should be signed subject to inspection. If any damage is found, it is the responsibility of the consignee to report the damage to the freight carrier and BFM Seating within 24 hours of receiving shipment. BFM will not be held responsible for carrier delays in delivery or any other circumstances beyond BFM's control.

Product Care

Product should be inspected on a regular basis for loose screws, glides, cracked or broken welds, cracked laminate, or any other irregularities.

Synthetic Teak: Wash with mild soap and warm water. Metal: Use a damp cloth. For grease and other stains use a combination of mild soap and water and wash thoroughly.

Wood: Coat with hard paste wax every few months for the first year and then as needed thereafter. Liquid spills should be cleaned up immediately. A liquid wood cleaner/wax product should be used for general cleaning. Do not use any solvents, abrasive or other harsh cleaners.

Upholstery: Vinyls may be cleaned with mild soap and water or vinyl cleaner (do not use any ammonia or chlorine products). For fabric upholstery verify cleaning procedure with manufacturer of the fabric or check with us.

Laminated Table Tops: Use mild soap and water (do not use any ammonia or chlorine products).

Warranty

The furniture in this catalog carries the following 1 year limited warranty against defects in construction to the original end user purchaser. Warranty is void if product is not maintained, altered in any fashion, mistreated or misused.

Extent of warranty is to cover workmanship and material of frames and does not cover upholstery, umbrellas or other materials. Other materials are governed by manufacturer's warranty. Warranty does not cover normal wear & tear.

This limited warranty is in lieu of all other warranties express or implied and BFM Seating expressly disclaims any implied warranties of merchantability or fitness for particular purpose. In no instance shall BFM Seating's liability under warranty exceed the value of the warranted item or items. Warranty as expressed does not include replacement freights or installation/removal. All warranty claims are subject to the following:

- Synthetic Teak: Excessive heat from the following sources voids warranty, prism affect of sun on footed glassware, metal objects such as condiment stands and any other object that creates excessive heat.
- Consumer properly assembling KD items
- Product is subject to normal use. Indoor furniture may not be subject to outdoor use or extremes in temperature & humidity. Outdoor furniture may not be subject to winter weather elements or excessive weather elements of any type.
- Umbrellas should not be subject to excessive wind or used in unsafe conditions in open or closed position.
- Warranty Claims must include pictures of subject product & may also require return for inspection. If returned product is deemed as abused return freight will be the responsibility of returning party.
- BFM reserves the right to determine under warranty to replace applicable part(s) or complete item.
- For any reason if any product is to be returned, a return authorization must be obtained before returning. Any product returned without a return authorization will be refused and all shipping costs will be the responsibility of the shipping party.

We reserve the right to update or discontinue products without notice.

If the buyer is concerned about exact color, texture, or stain, we strongly encourage you to request a sample swatch by contacting us. Colors may vary from catalog or website images. We are not responsible for discrepancies in color, texture, or stain if a sample swatch is not requested.

Indoor base sizing guide

Table Base See outdoor table base guide for more base options	Table Size											
	24" Round	30" Round	36" Round	42" Round	48" Round	24" Square	30" Square	36" Square	24x30"	24x42" 30x42"	24x48" 30x48"	30x60" 30x72"
Niles	•	•	•			•	•		•		2	2
Niles Bar Height	•	•				•	•		•		2	2
Adele 18" Round	•	•				•	•		•		2	2
Adele 24" Round			•	•	•			•				
Daphanie		•	•	•		•	•	•	•			2
Daphanie Bar Height		•	•			•	•		•			2
TB-BD Bolt-Down	•	•	•			•	•		•	2	2	
TB-BDT Bolt-Down Bar Height	•	•	•			•	•		•	2	2	
TB-C22 22" Cantilever Bracket						•	•		•			
TB-C33 33" Cantilever Bracket Also requires TB-P125 if marked PL (Pin Leg)								•		•	PL	PL
STB-0022*, STB-0022BP, STB-00224*, STB-00224BP										2	2	2BP
STB-0022T*, STB-0022TBP										2	2	
STB-00224T*, STB-00224TBP										2	2	2BP
STB-2222*, STB-2222BP, STB-22224*, STB-22224BP	•	•				•	•		•			
STB-2222T*, STB-2222TFR*, STB-2222TBP	•	•				•	•		•			
STB-22224T*, STB-22224TFR, STB-22224TBP	•	•				•	•		•			
STB-24304*, STB-24304BP										•		
STB-24304T*, STB-24304TBP										•		
STB-3030*, STB-3030BP			•									
STB-3030T*, STB-3030TFR*, STB-3030TBP			•									
STB-30304*, STB-30304BP			•	•				•				
STB-30304T*, STB-30304TFR, STB-30304TBP			•					•				
STB-36364*, STB-36364BP					•							
STB-36364T*, STB-36364TFR, STB-36364TBP				•	•							
STB-18R*, STB-18RBP, TB-TR183	•	•				•	•		•		2	2BP
STB-18RT*, STB-18RTFR*, STB-18RTBP, TB-TR183T	•										2	
STB-184RBP, TB-TR184	•	•				•	•		•		2	2BP
STB-184RTFR, STB-184RTBP, TB-TR184T	•										2	
STB-22R*, STB-22RBP, TB-TR223			•									
STB-22RT*, STB-22RTFR*, STB-22RTBP, TB-TR223T		•	•			•	•		•			2BP
STB-224R*, STB-224RBP, TB-TR224			•					•		•		
STB-224RT*, STB-224RTFR, STB-224RTBP, TB-TR224T		•	•			•	•	•	•			2BP
STB-304R*, STB-304RBP, TB-TR304				•	•							
STB-304RT*, STB-304RTFR, STB-304RTBP, TB-TR304T				•	•							

*Not suitable for Midtown table tops

2 = two bases required per top / 2BP = two BP or two Travis bases required per top

Outdoor base sizing guide

Table base & top name	Table top size											Umbrella Compatible
	24" Round	30 & 32" Round	36" Round	42" Round	48" Round	24" Square	30 & 32" Square	34 & 36" Square	24x30" 24x32"	30x51" 32x48"	30x60" 30x72"	
Alpha Bolt-Down Longport, Seaside, Tribeca, SoHo, Spectra	•	•	•			•	•		•	2		
Bali 4-Leg Longport, Seaside, Tribeca, SoHo, Spectra	•	•	•			•	•	•	•			
Bali / Margate End Base Set Longport, Seaside, Tribeca, SoHo										•	•	UB
Barnegat Base 28" Spread Barnegat Tops Only	•	•							•			UB
Barnegat Base 32" Spread Barnegat Tops Only			•	•			•	•				UB
Boca 24" Spread SoHo, Spectra, Tribeca	•	•				•	•		•			
Boca 33" Spread SoHo, Spectra, Tribeca		•	•	•	•		•	•				UB
Boca Trestle SoHo, Tribeca										•		
Elite 18" Round Longport, Seaside, Tribeca, SoHo, Spectra	•	•				•	•		•	2		
Elite 18" Square Longport, Seaside, Tribeca, SoHo, Spectra	•	•	•			•	•		•	2		
Elite 24" Round Longport, Seaside, Tribeca, SoHo			•	•	•			•				
Elite 24" Square Longport, Seaside, Tribeca, SoHo				•	•			•				
Elite End Base Set Longport, Seaside, Tribeca, SoHo										•	•	UB
Elite Double Column 16x30" SoHo, Tribeca										•		
Margate 16" Round Longport, Seaside, Tribeca, SoHo, Spectra	•					•						
Margate 16" Square Longport, Seaside, Tribeca, SoHo, Spectra	•					•			•			
Margate 18" Round or Square Longport, Seaside, Tribeca, SoHo, Spectra	•	•				•	•		•			UC
Margate 20" Round Longport, Seaside, Tribeca, SoHo			•									UC
Margate 20" Square Longport, Seaside, Tribeca, SoHo			•					•				UC
Margate 24" Round or Square Longport, Seaside, Tribeca, SoHo				•	•			•				UC

UB = Umbrella Base required / UC = Column holds umbrella / 2 = two bases required per top

notes



2080 Wheatsheaf Lane
Philadelphia, PA 19124

T: 215-289-5411 F: 215-289-5420

www.bfmseating.com



2080 Wheatsheaf Lane
Philadelphia, PA 19124

T: 215-289-5411 F: 215-289-5420

www.bfmseating.com