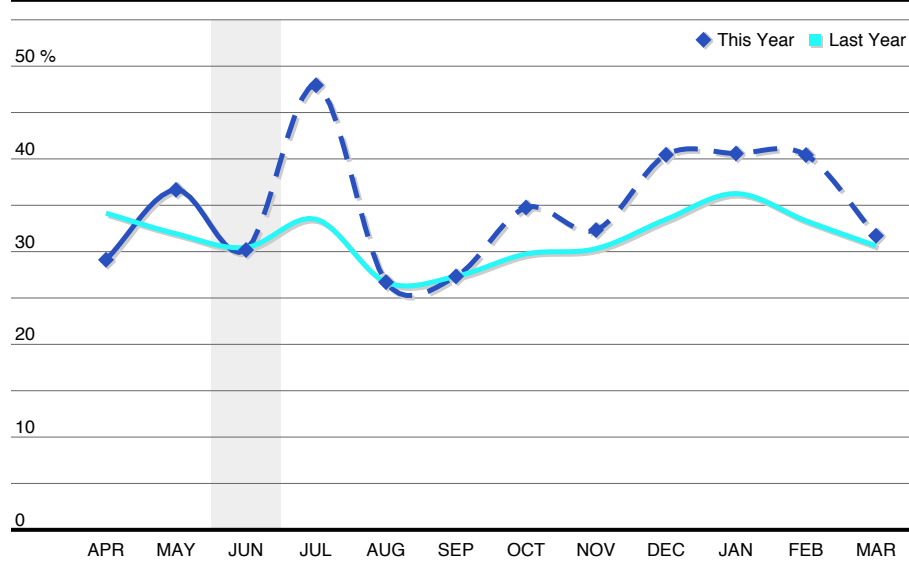
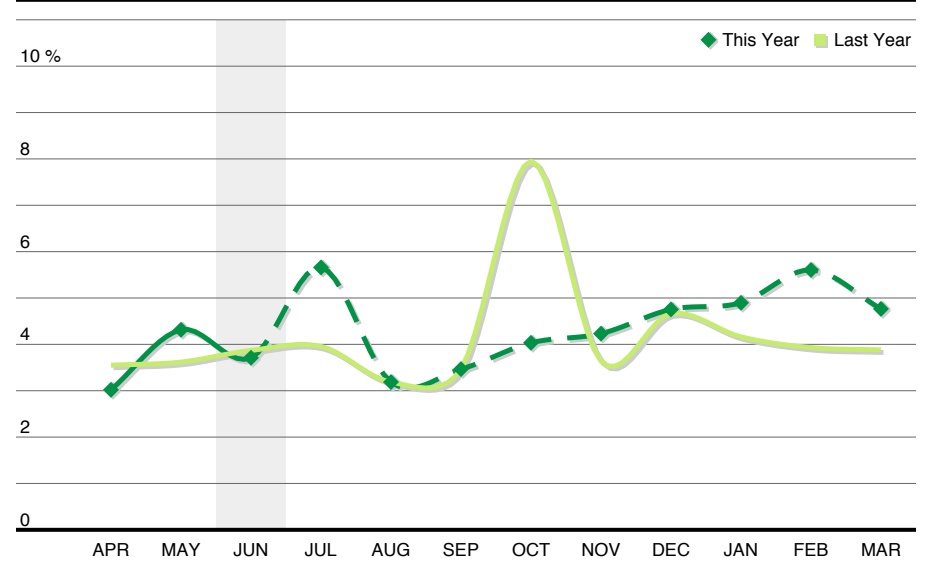


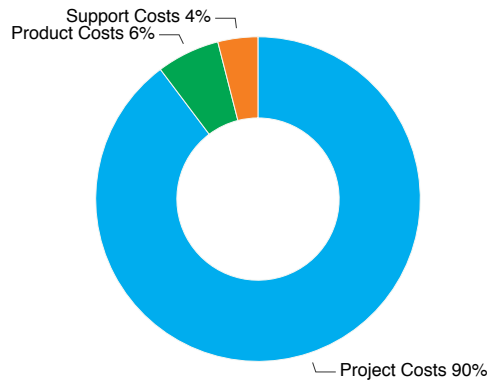
**MATERIALS COST TO REVENUE**



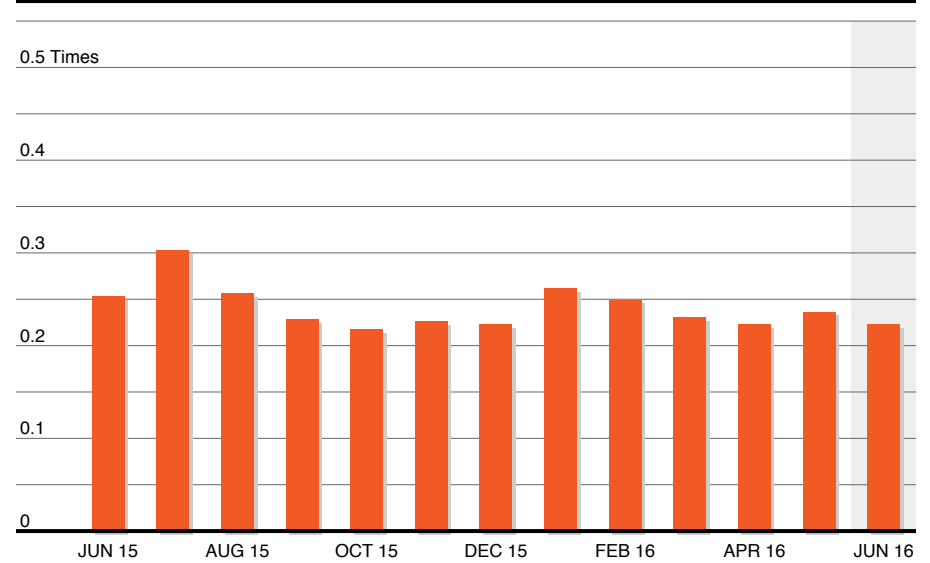
**DIRECT WAGES COST TO REVENUE**



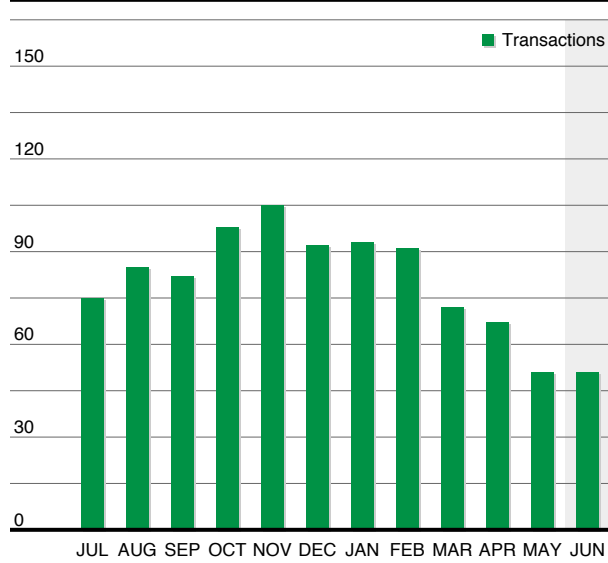
**TOP THREE COST OF SALES - This Year**



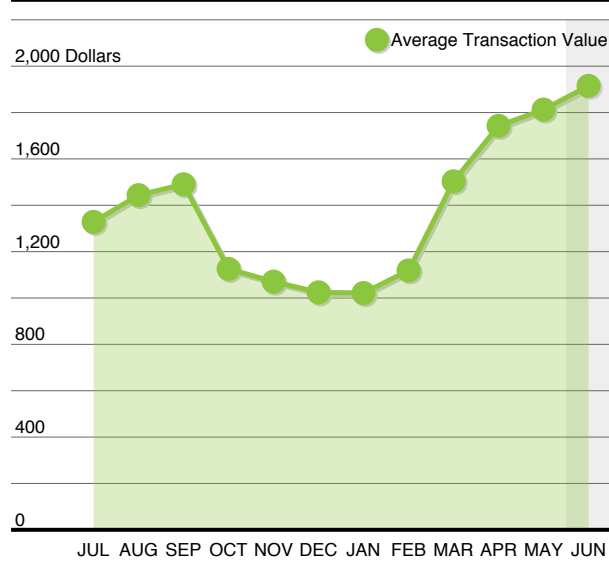
**STOCK TURN - Last 12 months**



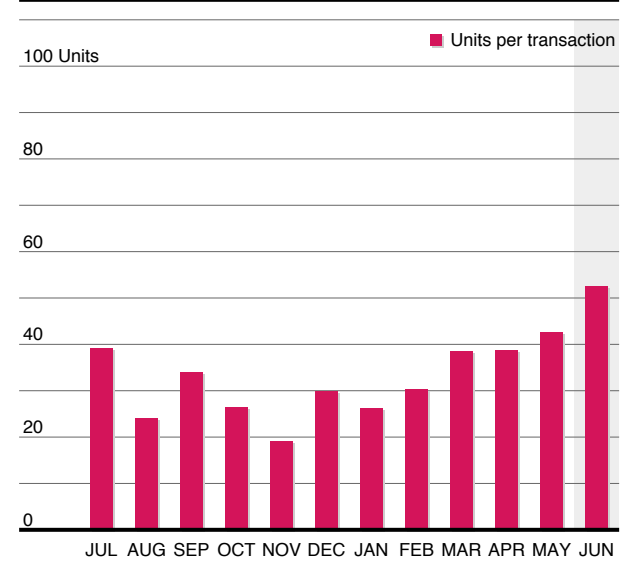
**SALES TRANSACTIONS**



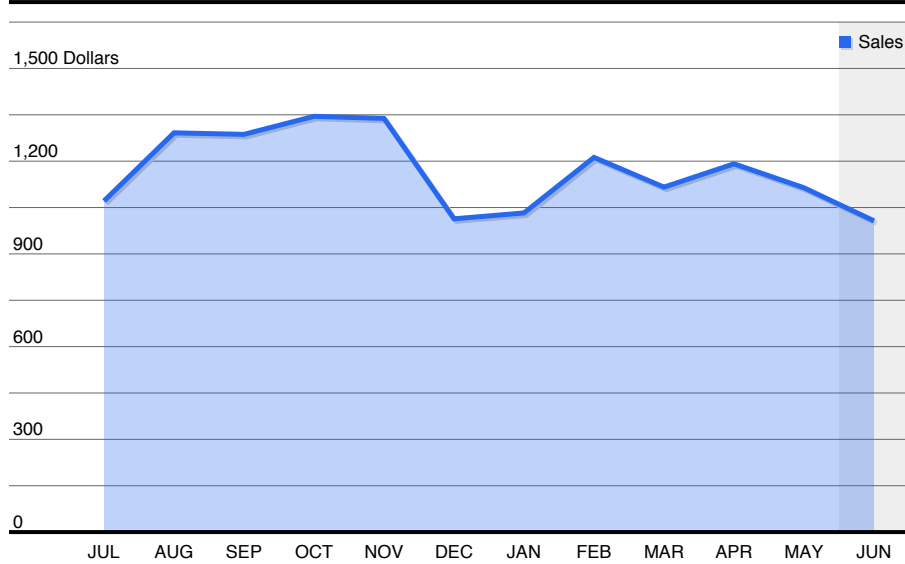
**BASKET SPEND**



**UNITS PER TRANSACTION**



**SALES PER SQUARE METRE**



**SALES TYPE**

