

## WORKSHOP ON INTEGRATED CLEM

**Topic: Invitation to Delphi workshop Thursday March 26, 2015, MPI Dresden, Germany**

The *MPI-CBG EM facility* is happy to announce the first hands-on Delphi workshop. The Delphi is an all-in-one solution for correlative light and electron microscopy (CLEM) and the world's first, fully integrated system.

The design and software of the Delphi make correlative microscopy accessible to fluorescence and electron microscopy users alike. Correlative microscopy is getting more attention for its ability to combine structural with functional information. However, the complexity of the workflow has so far limited the adoption of the technique by the community at large.

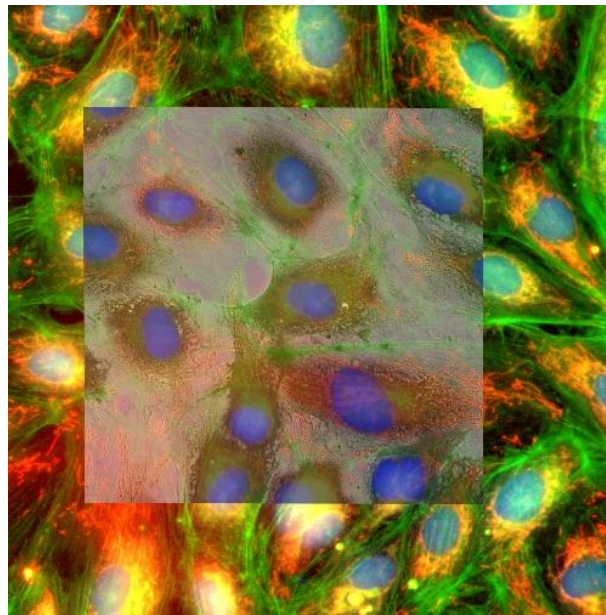
### Goals of the workshop

This workshop will serve as an introduction to correlative microscopy and is intended to show the extra information that can be gained with CLEM and the benefits of integrated CLEM using the Delphi system.

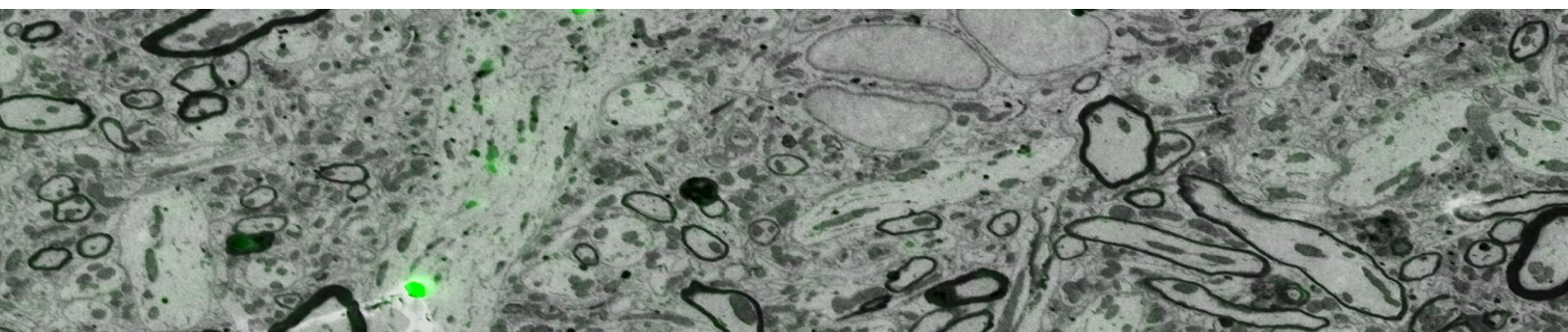
The hands-on session is meant for users of Electron Microscopy, Light Microscopy and/or correlative microscopy, to get experience with the new Delphi system.

Lectures in the morning (MPI-CBG small auditorium) are of general interest and open to all. For the hands-on sessions there are only 12 places, so an early sign up is advised.

Sign up closes on Friday, March 20.



In case attendees are interested in a more in-depth session after the workshop, it is possible to visit MPI-CBG EM facility on Friday, March 27. Users are encouraged to bring their own samples when they will get plenty of hands-on time with the system. We are excited to hear your comments and remarks about this unique system.



## Preliminary program, Thursday 26<sup>th</sup> March 2015

09:15 - 10:30	3 lectures on CLEM approaches (small auditorium)
10:30	Coffee break (LMF hallway)
10:50 - 12:00	3 lectures on CLEM approaches (small auditorium)
12:00 - 12:30	Information from Phenom-World about Delphi
12:30	Lunch
13:30 - 14:30	Hands-on session 1
14:30 - 15:30	Hands-on session 2
15:30	Coffee break discussions (LMF hallway)
16:00 - 17:00	Hands-on session 3
17:30	Dinner

## Hands-on sessions

Carousel sessions for the participants: groups will circulate.

- Delphi hands-on (samples prepared by MPI-CBG)
- Sample prep methodology
- Q&A with the lecturers (advantages and disadvantages of several correlative experiments or systems)

## How to participate to these workshops

The workshop is free to everybody, but registration for the hands-on sessions is requested.

Please go to <http://www.delphimicroscope.com/events/workshop-dresden> to register for these sessions. A confirmation will be sent within a few days upon registration.

