

INDUSTRY  
4.0  
READY!

# PROLIGENT

## Analytics & Reporting



Quickly transform **large amounts of complex data** from your manufacturing locations into **actionable information** via Web-based reports, charts and alerts.



# PROLIGENT

## Analytics & Reporting

As the real-time window on your manufacturing floor, Proligent helps streamline processes, boosts product quality and enables better business decisions.

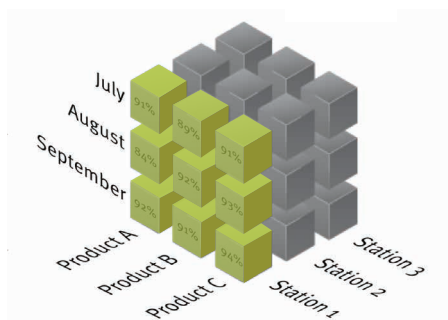
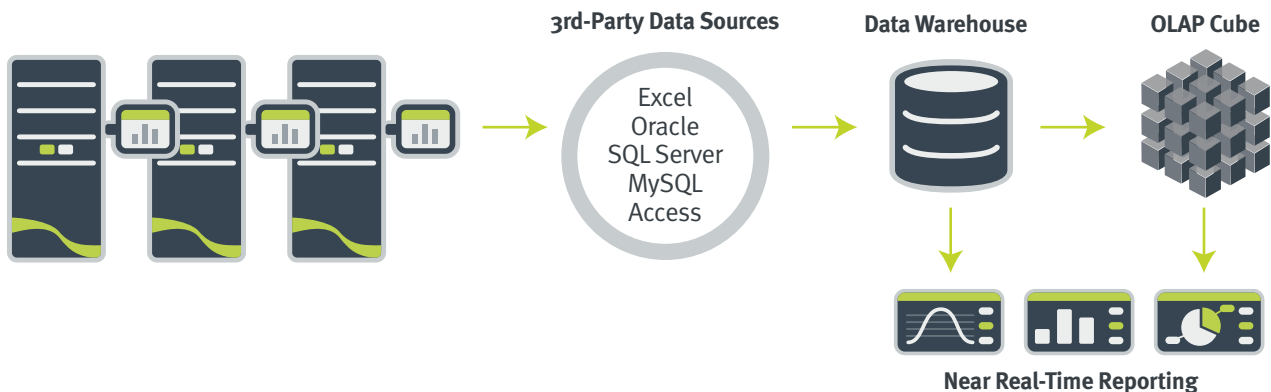
### → Better Data Analytics for Smart Factories and Industry 4.0

If you have multiple test stations, sites and suppliers, then you've got huge amounts of data coming at you in different formats, around the clock and even from around the world. How do you make sense of it all? How can you get ultimate visibility on the production floor?

**Proligent Analytics is the answer.**

### → How Does It Work?

Automatically capturing test results and combining them with select business and supply-chain data, Proligent Analytics enables a **central decision-support system** that empowers engineering, operations and QA staff to optimize product quality, time-to-market and supply-chain activities.



### → How Does It Deliver Business Intelligence?

The OLAP cube provides **360° visibility on manufacturing results** and the supply chain via a multi-dimensional perspective on your performance.

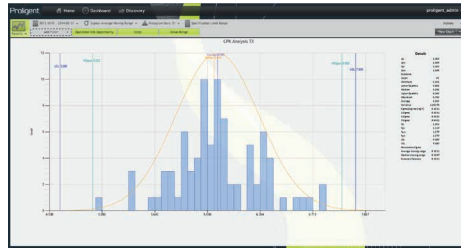
With personalized Web-based dashboards you have access to more than 50 standard reports for **Yield, Production, Cpk Analysis, Fail & Repair** and more. By clicking any element you can quickly drill down to investigate and resolve problems.

## → Powerful Reporting



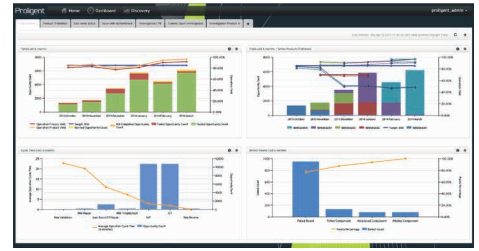
### Analytics –Yields

During production, results are crucial for decision-making. Proligent delivers exactly what you need with First Pass, Last Pass, and Cumulative Yield reports.



### Analytics –KPIs

With reports like CpK Analysis, Throughput, Cycle Time, Bone Pile, and Utilization, you have instant access to key performance indicators (KPIs).

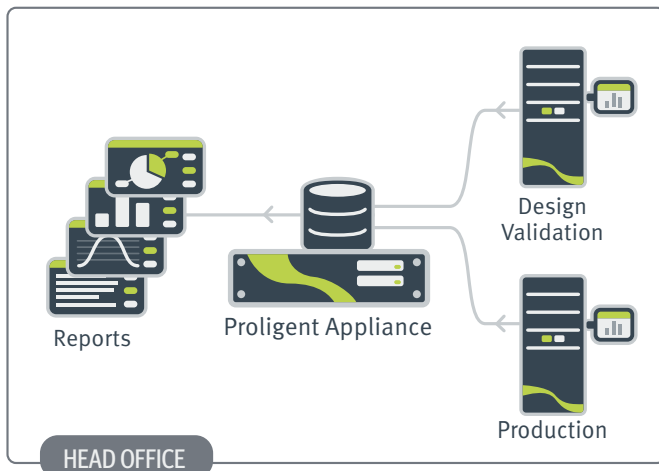


### Analytics –Shareable Dashboards

Proligent's Web dashboards deliver 50+ standard manufacturing reports and charts to help you improve product quality and accelerate results.

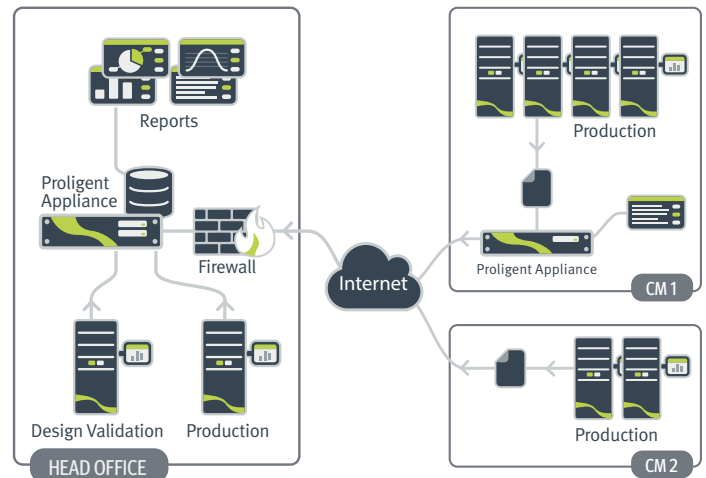
## → Deployments

### Single Sites

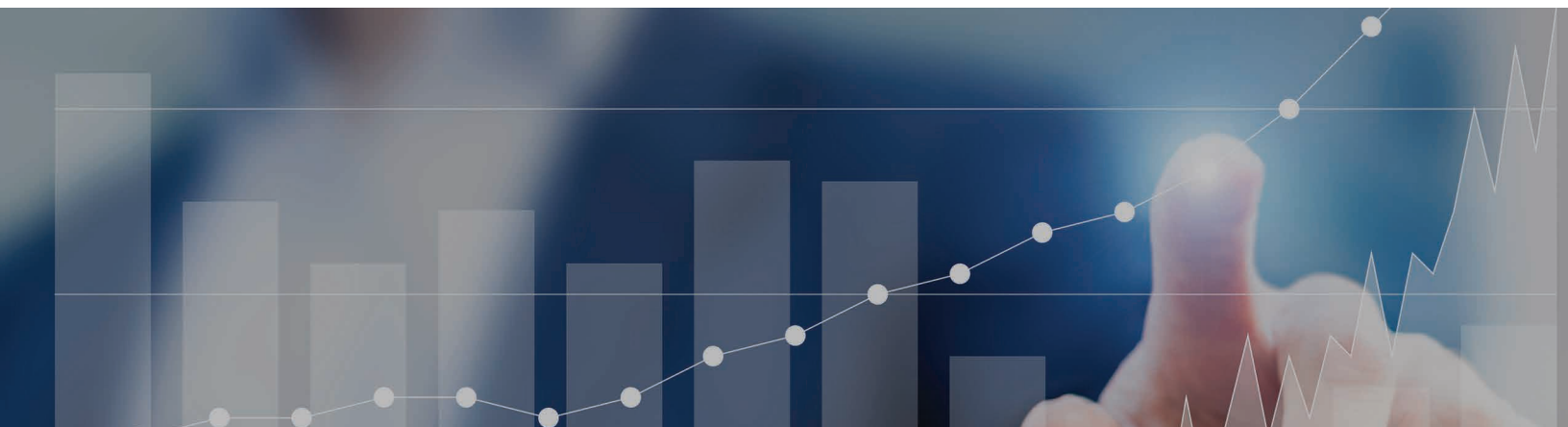


**If you have a small number of test stations, this option will solve all your test-data management needs.** While regularly consolidating your test results, Proligent delivers actionable information in standard manufacturing reports and charts to accelerate decision-making and improve product quality.

### Multi-Sites



**For OEMs with remote test stations, this option provides high value and scalability.** With a secure Proligent Appliance at your contract manufacturer (CM) sites, you can quickly populate the central Data Warehouse with near-real-time consolidated test results and provide your CMs with daily listing reports.





Spend more time making informed decisions,  
and less time managing raw data.

## Comprehensive Web-based Analytics and Reporting

- **Yield:** First Pass, Last Pass, Cumulative
- **Production:** Throughput, Backlog Time, Cycle Time, Total Time, Failed Runs, Bone Pile, and Aging Units
- **Statistical Process Control Analysis:** Cpk Analysis
- **Fail and Repair:** Failure/Defects Pareto, Failure/Defects Listing
- **Utilization:** Station Utilization
- **Listing:** Operation/Sequence Runs, Measurements, Units by Activity, Unit Results View and more
- **Genealogy:** Assembly History, Parent Search
- **RMA:** Returns Listing, Triangle Chart Returns
- **Process Monitoring:** Monitor/Current Yield, Work in Progress
- **System:** Event History, Data Integration History

## → Substantial Product Lifecycle, OpEx and CapEx Benefits

- Get 360° visibility across your product lifecycle and supply chain to quickly identify and resolve issues affecting quality.
- Validate your product designs more efficiently and eliminate flaws faster.
- Spend more time using your data to make informed engineering and business decisions and less time collecting and organizing it.
- Access the complete history of all units and components to see key operational and product genealogy information.
- Gain better visibility of your valuable test assets to improve how and when they are used and to reduce capital expenditures.
- Enhance communication and streamline key design, manufacturing, supplier and customer service processes.

## → Meet the High-Performance Proligent Appliance

Proligent Analytics is packaged in a test-ready, rack-mountable appliance with full redundancy, complete security, and right-sized for your data needs. It fits seamlessly into your IT environment, requiring minimal maintenance.



avera.com    ☉ Canada    ☉ United States    ☉ Mexico    ☉ Europe    ☉ Japan

Proligent is a registered trademark, and Avera is a trademark, of Avera Technologies Inc. All other brand names, product names or trademarks belong to their respective holders. © 2017 Avera. All rights reserved. 08/2017

