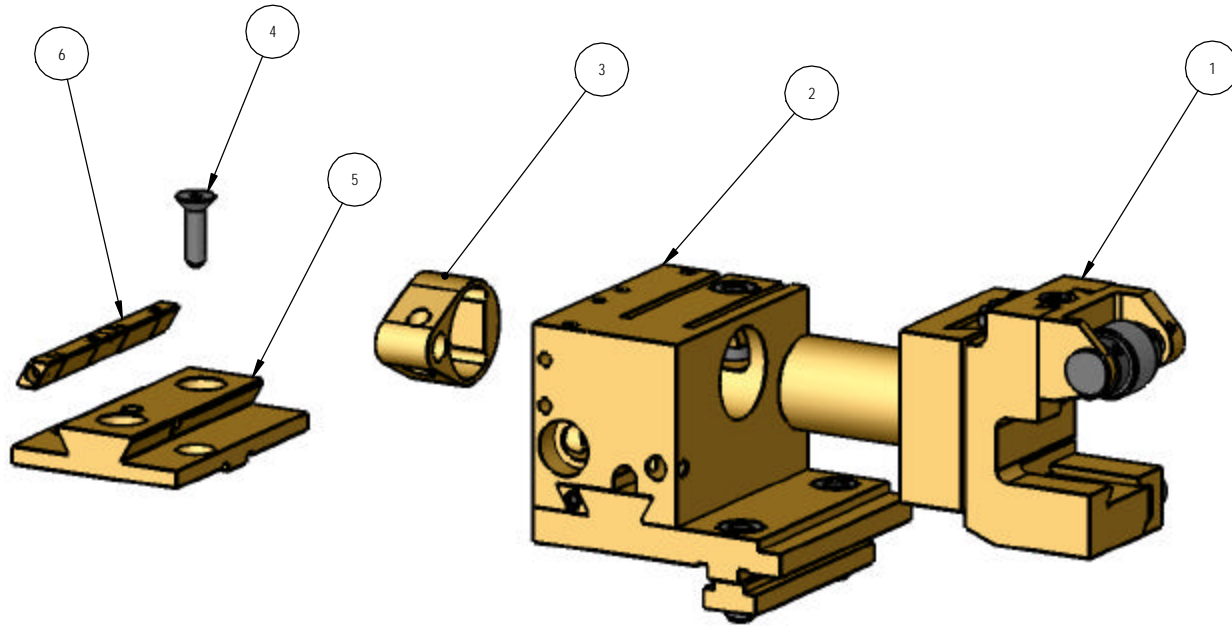


REV	ZONE	ECN	REVISION DESCRIPTION	DATE	ENG
	---	---	Released	XXXX	XXXX



ITEM NO.	PART NUMBER	DESCRIPTION	QTY.
1	111-01	Center Shave Tool Assembly	1
2	111-11	Second Position Tool Block Assembly	1
3	111007	Taper Arm - 3rd Position	1
4	111026	Screw, SSS, #10-32 x .750	1
5	111202	Dovetail Adapter Plate (3rd)	1
6	111059-M	Expansion Locking Gib (1st & 3rd)	1

THIS DRAWING IS THE CONFIDENTIAL AND EXCLUSIVE PROPERTY OF C.J. WINTER MACHINE TECHNOLOGIES, INC. AND MAY NOT BE COPIED, REPRODUCED, OR DISCLOSED IN ANY WAY, WHATSOEVER, TO ANYONE WITHOUT THE EXPRESS WRITTEN PERMISSION OF C.J. WINTER MACHINE TECHNOLOGIES, INC. UNLAWFUL DISCLOSURE MAY RESULT IN PROSECUTION.
© 2014 C.J. WINTER MACHINE TECHNOLOGIES, INC.

UNLESS OTHERWISE SPECIFIED:
DRAWING MUST COMPLY TO
C. J. WINTER ENGINEERING
STANDARD E1038 & ASME
Y14.5M 1994. UNTOLERANCED
DIMENSIONS ARE BASIC
0.020 A B C SW

DRAWN BY: E. Pacavar
DWG DATE: 12/17/04
ENG. APPR:
APPR DATE:
MATERIAL:
HEAT TRT:



Shave Tool and 2nd/3rd Position Block

DWG SIZE: B
SCALE: 1:1.25
SHEET 1 OF 1
DRAWING NO:
111-17