

Imagine... a look that lasts forever!



Siding Systems

**NOVIKSHAKE™ SE
STAGGERED EDGE SHAKE**

INSTALLATION GUIDE



NOVIKSHAKE™ SE - STAGGERED EDGE SHAKE

INSTALLATION GUIDE

GENERAL INFORMATION

CAUTION: REMEMBER THAT POLYMER UNDERGOES EXPANSION/CONTRACTION DUE TO VARIATIONS IN TEMPERATURE. THE FOLLOWING INSTRUCTIONS WILL ALLOW FOR THE EXPANSION / CONTRACTION OF THE MATERIAL.

1-Always begin the installation at the lowest part of the structure, from left to right.

2-Always nail through the installation holes. These holes include a polymer film, which permits for precise centering of the nail, allowing the expansion and contraction of the material. Each complete panel must be nailed through the center hole, at both extremities and have a minimum of 5 nails in the nailing channel at maximal intervals of 16"(40,64cm) or less (Figure 1). If panels are installed on a furring wall, furring strips should be at 8"(20,32cm) center to center and a furring strip is required behind each nail. Always use non-corrosive nails or screws with a head of 0.4"(1cm) in diameter and a body of 0.150"(0,38cm) in diameter and penetrate a minimum of 1 1/4"(3,18cm) into a solid surface.

3-Never hammer the nails in completely; leave a gap of 1/16"(0,16cm). The stoppers located around the holes stop the hammer from driving the nails in too far, and provides the required gap (Figure 2).

4-Make sure that all pieces are properly joined together (push firmly upwards on the panel making sure that the insertion is complete) (Figure 3).

5-When using finition trim (i.e. NovikTrim1, J-trim, etc.) leave a gap of 1/4"(0,64cm) between the trim and the siding (Figure 4). The required opening for finition trim is 3/4"(1,91cm).

Note:

- To cut the material, it is recommended to use a circular saw with a finishing blade.
- Keep the R-E-L number of your products (ex: REL-123456) for future references.

Figure 1

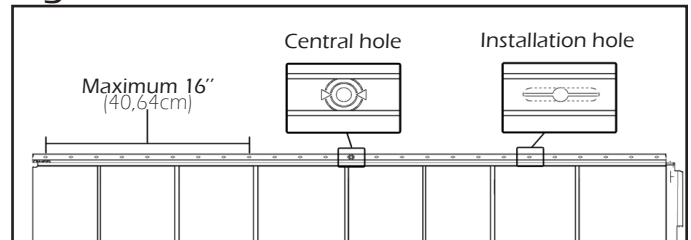


Figure 2

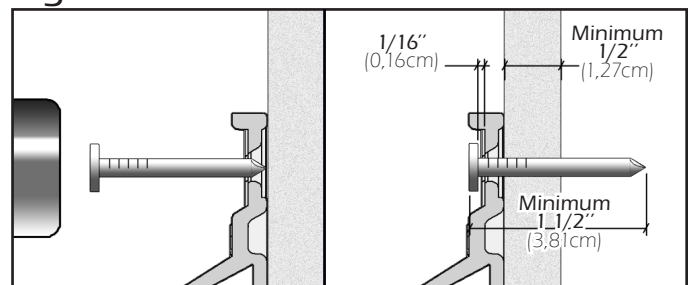


Figure 3

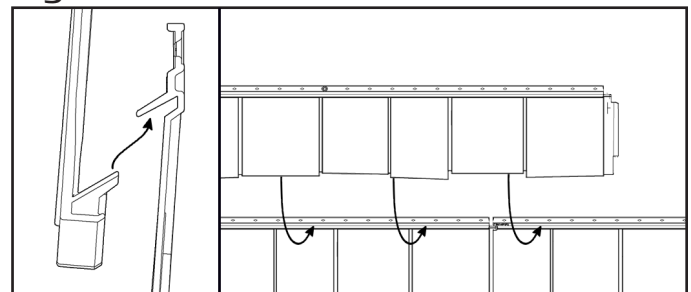
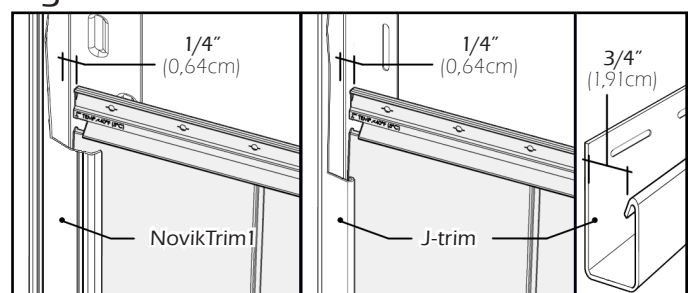


Figure 4



Some elements of the image above were partly removed to facilitate understanding.

NOVIKSHAKE™ SE - STAGGERED EDGE SHAKE INSTALLATION GUIDE

INSTALLATION STEPS WITH J-TRIM AS STARTER STRIP

1-Install finition trim on the gable perimeter. Make sure that the horizontal trims are perfectly leveled and square (Figure A).

2-Cut a first panel at its left end according to the roof slope and also cut the bottom of the panel in straight edge. Install the panel into the finition trims by leaving a gap of 1/4"(0,64cm) between the trim and the siding (Figure B).

3-On each panel, hammer a nail into the center hole of the panel, this will ensure even movement of panel in both directions during expansion/contraction. Also hammer a nail into the last hole on both ends and 2 other nails into nailing channel (Figure C). Each full length panel should be secured with a minimum of 5 nails. If the panel is installed on a furring wall, a furring strip is required behind these holes.

- N.B.: If a panel piece does not have the initial center hole in the middle, drill a new center hole of 1/8"(0,32cm) diameter at the same height as the other installation holes.

Figure A

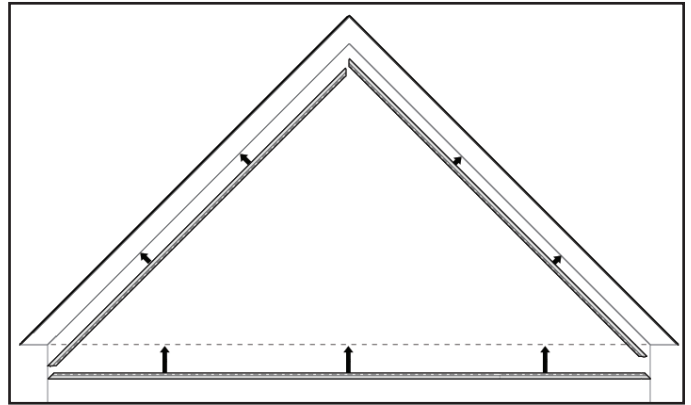


Figure B

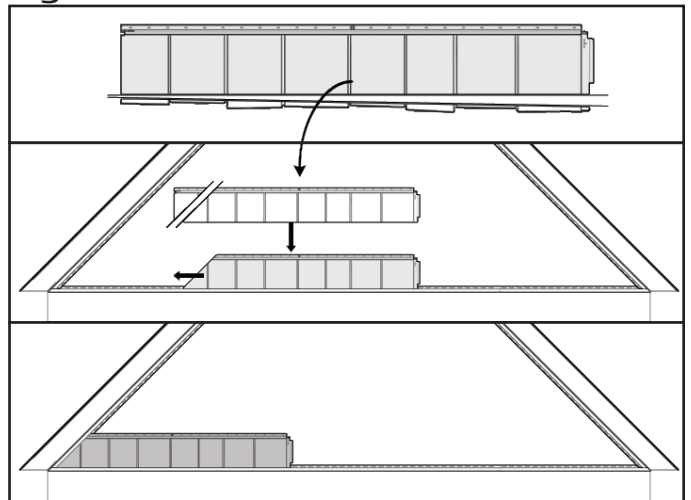
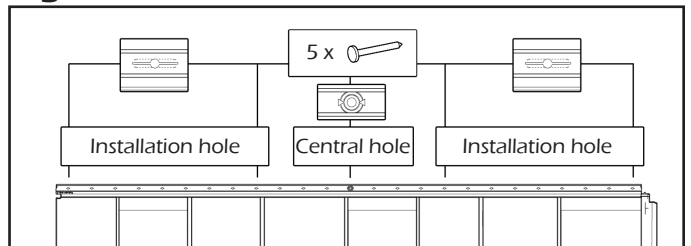


Figure C



NOVIKSHAKE™ SE - STAGGERED EDGE SHAKE INSTALLATION GUIDE

INSTALLATION STEPS WITH J-TRIM AS STARTER STRIP (CONTINUATION)

4-Insert the following panel into the finition trim and slide it over the previous panel. Make sure to space equally each panel from one to another. If installed at outdoor temperature over 40°F(5°C), slide panel to the stopper (located to the right of panel). When resistance is felt, do not force insertion of part. Use the reference line to confirm the position. If installed at outdoor temperature under 40°F(5°C), adjust the panel to the temperature line indicated (Figure D). Repeat until the end of the row.

5-Begin the second row by cutting the first panel with 16"(40,64cm) increment from the cutting line of the first row. Hooking the lower panel section with the top hooks of the last installed row. To eliminate stacking seams, alternate the cut positions for the following rows and continue up to the summit (Figure E).

Note: Do not set accessories directly on the siding. The fasteners must be fixed on a solid surface. If you need to set accessories on siding, at a concealed spot on the panel create a new 1"(2,54cm) slot larger than the nail body but smaller than the nail head to permit expansion/contraction of siding.

Figure D

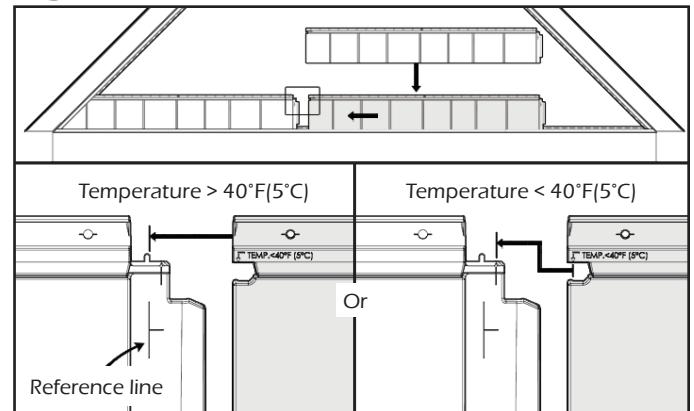
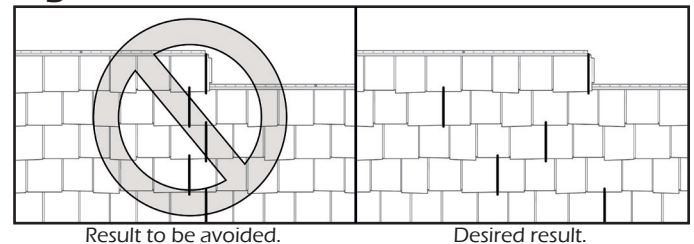


Figure E



NOVIKSHAKE™ SE - STAGGERED EDGE SHAKE INSTALLATION GUIDE

INSTALLATION STEPS OVER SIDING

1-On the last siding row already installed, remove the nailing channel and with a knife, create 1"(2,54 cm) long slits, these must be wider than the body of the nail, but smaller than its head at 1/2"(1,27cm) from the cutting line. Space the slits at an interval of 8"(20,32cm) (Figure A1).

2-Install the starter strips over the siding. Align the nailing holes of the starter strips onto the slits created on siding and nail down both parts (Figure B1).

3-Cut a first panel at its left end according to the roof slope and insert the panel into the starter strips (Figure C1).

4-On each panel, hammer a nail into the center hole of the panel, this will ensure even movement of panel in both directions during expansion/contraction. Also hammer a nail into the last hole on both ends and 2 other nails into nailing channel (Figure D1). Each full length panel should be secured with a minimum of 5 nails. If the panel is installed on a furring wall, a furring strip is required behind these holes.

- N.B.: If a panel piece does not have the initial center hole in the middle, drill a new center hole of 1/8"(0,32cm) diameter at the same height as the other installation holes.

Figure A1

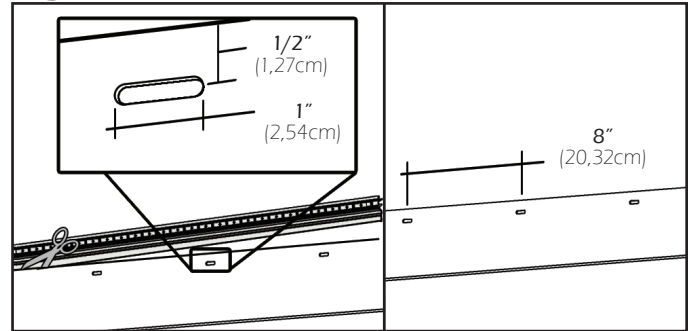


Figure B1

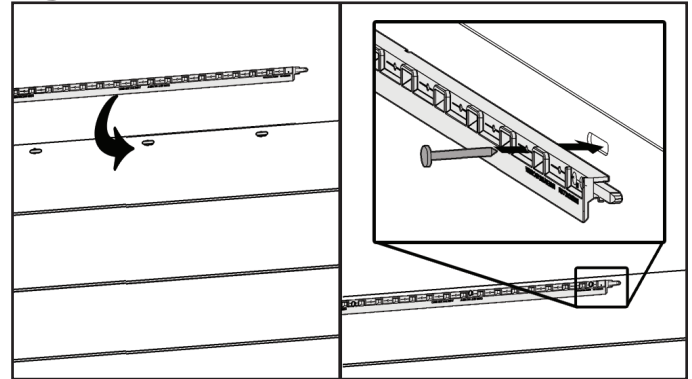


Figure C1

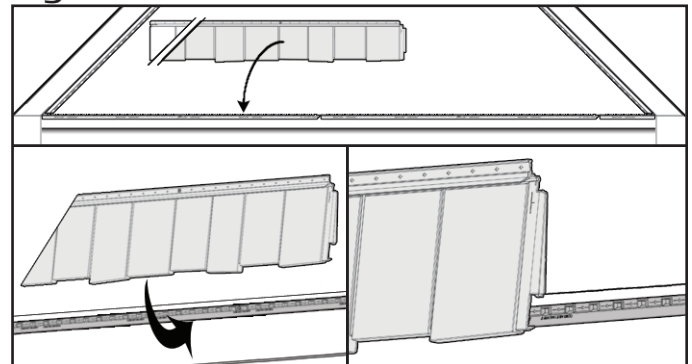
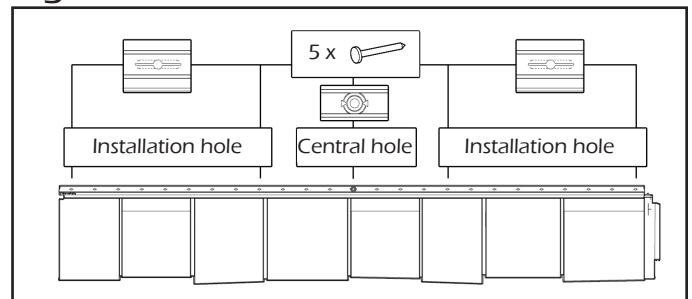


Figure D1



NOVIKSHAKE™ SE - STAGGERED EDGE SHAKE INSTALLATION GUIDE

INSTALLATION STEPS OVER SIDING (CONTINUATION)

5-Insert the following panel into starter strips and slide it over the previous panel. Make sure to space equally each panel from one to another. If installed at outdoor temperature over 40°F(5°C), slide panel to the stopper (located to the right of panel). When resistance is felt, do not force insertion of part. Use the reference line to confirm the position. If installed at outdoor temperature under 40°F(5°C), adjust the panel to the temperature line indicated (Figure E1). Repeat until the end of the row.

6-Begin the second row by cutting the first panel with 16"(40,64cm) increment from the cutting line of the first row. Hooking the lower panel section with the top hooks of the last installed row. To eliminate stacking seams, alternate the cut positions for the following rows and continue up to the summit (Figure F1).

Note: Do not set accessories directly on the siding. The fasteners must be fixed on a solid surface. If you need to set accessories on siding, at a concealed spot on the panel create a new 1"(2,54cm) slot larger than the nail body but smaller than the nail head to permit expansion/contraction of siding.

Figure E1

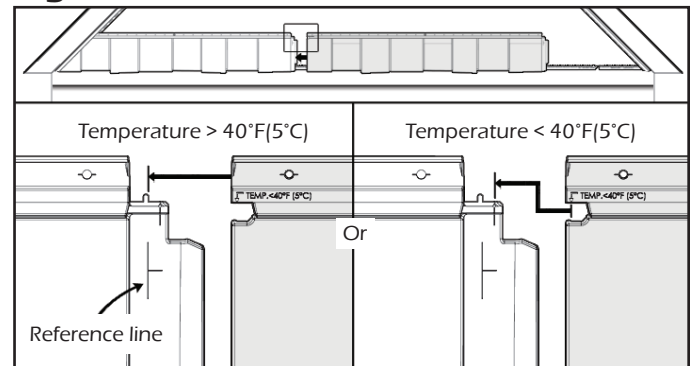


Figure F1

