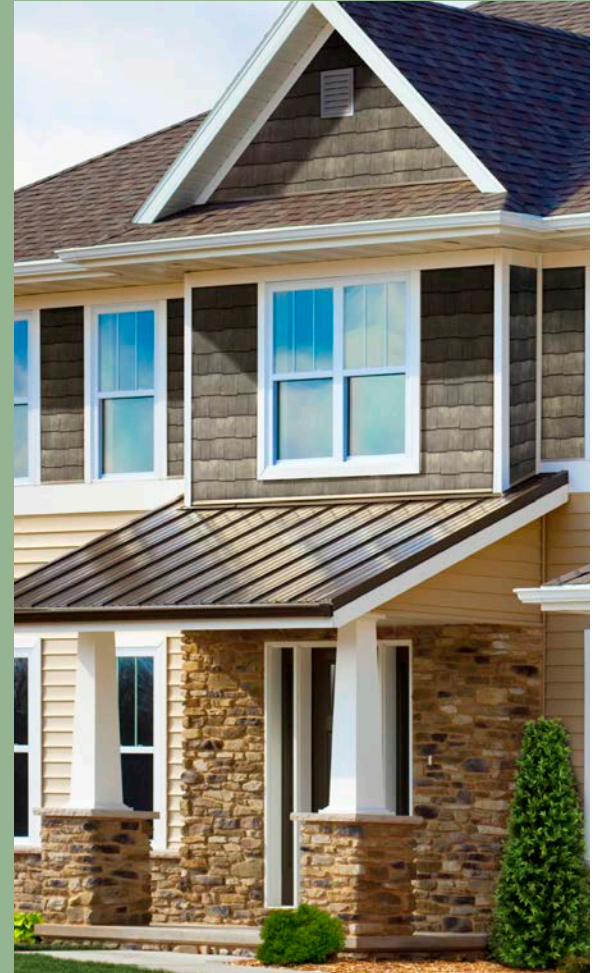
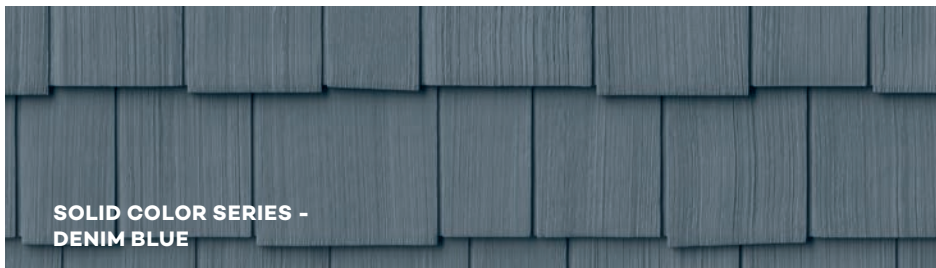
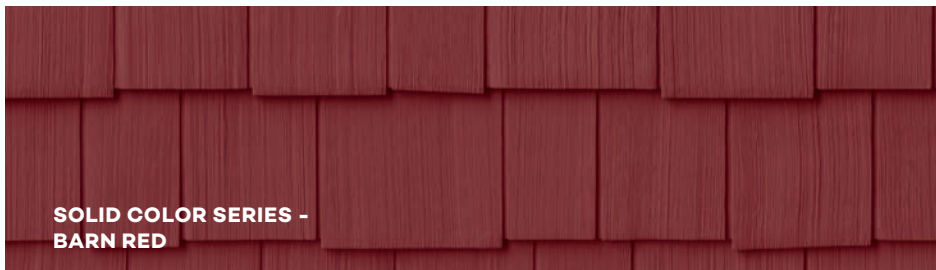
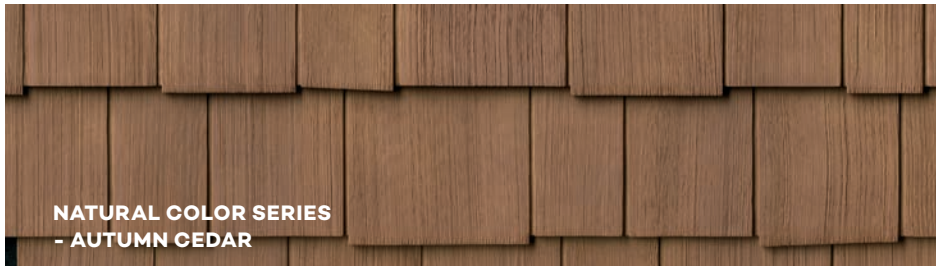


The New Face of Building Exteriors.



INSTALLATION GUIDE



ROUGHSAWN CEDAR STAGGERED

Tando provides these instructions as general guidelines only. The contractor and/or installer shall be responsible for ensuring that all applicable local building codes are followed, which may require modification of these general guidelines. Tando assumes no liability for personal injury or property damage resulting from improper or careless application of the described techniques.

For more information on Tando and its wide variety of state of the art products, please call us at 844-MY-TANDO (844.698.2636).

Installation Guidelines can be downloaded from our website: www.tandobp.com.

ROUGHSAWN CEDAR STAGGERED INSTALLATION GUIDE



GENERAL INFORMATION

1-Tando are intended for use in a vertical placement only and are not designed or warranted for roofing or flooring applications. However mansard roofs with a 45/12 slope or greater are acceptable applications.

2-Tando are designed as an exterior cladding, not as a weather resistant barrier. TandoShake is designed to allow the material underneath it to breathe; therefore, it is not a watertight covering. To achieve designed performance, TandoShake must be installed over a weather resistant house barrier system, such as house wrap.

3-As with the majority of exterior building materials, Tando will expand and contract with a change in temperature. Therefore, during installation it is necessary to position the TandoShake properly to compensate for temperature effects.

4-It is essential to work over a smooth, flat, nailable wall surface, (i.e. minimum 7/16"(1,11cm)) OSB board or plywood is recommended). If Tando products are being installed over furring strips, furring strips must be installed on a 45° angle, spaced 8"(20,32cm) center to center, while ensuring that the side seams are supported by furring strips.

5-Fixtures cannot be installed directly onto TandoShake; always use a wooden support or specifically designed mounting blocks to attach fixtures. Follow the mounting block manufacturer's installation instructions and ensure proper clearance to the TandoShake (recommended minimum of 1/4"(0,64cm)) to allow room for expansion and contraction.

6-Non-corrosive fasteners are required to secure the product and they must penetrate through the solid surface by at least 1 1/4"(3,18cm) and into a solid substrate by at least 7/16"(1,11cm).

7-Always begin the installation at the lowest point of the structure, work from left to right installing one row at a time, and completing one wall before beginning another.

8-Store product on edge (vertical), do not stack flat.

9-Keep the R-E-L number, located on the box of your products (ex: REL-123456) for future reference.

10-To cut the material, it is recommended to use a circular saw with a thin kerf finishing blade.

11-Some finish trims such as J-channel and Outside Corner Post must be installed on wall prior to installation of TandoShake. Follow the finish trim manufacturer's instructions for proper installation.

12-Fastening TandoShake should not restrict movement. Fasteners should be driven straight into the center of any nailing slot with the head of the fastener making light contact with the product, allowing the section to be hung. The center nail hole must always be securely fastened to ensure that TandoShake expands and contracts from the center out.

13-If a partial piece is used at either end, a new center hole should be created, by drilling a 1/8"(0,32cm) hole in the top flange, near the center of the section at the same height as the other installation holes.

14-If face nailing is employed, pre-drill a hole in an inconspicuous area, such as a mortar joint. The hole must be larger than the shank of the nail or screw, but smaller than the head, to allow for possible thermal movement. The head can be covered with matching paint or caulk.

15-It is best to work with the product at waist-level, allowing the installer to inspect the back of the product, verifying that all fingers are properly engaged. Do not force product down onto the flange of the lower row, as this may damage the stop posts and/or will override the expansion joints and cause buckling.

16-Fitting product between windows and around openings requires a spacing of 1/4"(0,64cm) to allow for expansion.

17-Variations in shade and color are an inherent characteristic of TandoShake natural color.

ROUGHSAWN CEDAR STAGGERED INSTALLATION GUIDE



BASIC GUIDELINES

1-Always fasten through the center of the nailing slots. Each complete RoughSawn Cedar Staggered section must be fastened through the center hole, at both extremities, plus 2 others evenly spaced on each side of the center hole and have a minimum of 7 fasteners in the nailing channel at maximum spacing of 8"(20,32cm) or less and one fastener into the lateral hole (Figure 1). Closer spacing of fasteners is required for high velocity wind areas; for details refer to report ESR-3070, which can be downloaded from our website www.tandobp.com. If RoughSawn Cedar Staggered is installed on a wall with furrings, furring strips should be installed on a 45° angle, at 8"(20,32cm) center to center and a furring strip is required behind each fastener.

2-Never hammer or screw the fasteners in completely; leave a gap of 1/16"(0,16cm) between the nailing channel and the fastener's head (Figure 2). Always use non-corrosive nails or screws with a head of 0.4"(1cm) in diameter and a body of 0.150"(0,38cm) in diameter and penetrate through the solid surface by at least 1 1/4"(3,18cm) and into a solid substrate by at least 7/16"(1,11cm).

3-Make sure that all pieces are properly joined together (push firmly upwards on the section making sure that the insertion is complete) (Figure 3).

4-When using a finish trim (J-channel, Outside Coner Post, etc.), leave a space of 1/4"(0,64cm) between the trim and TandoShake (Figure 4). The required opening for finish trim is 3/4"(1,91cm).

5-RoughSawn corners must be installed on wall corners prior to installing the RoughSawn Cedar Staggered sections. See the corner installation section as needed.

Figure 1

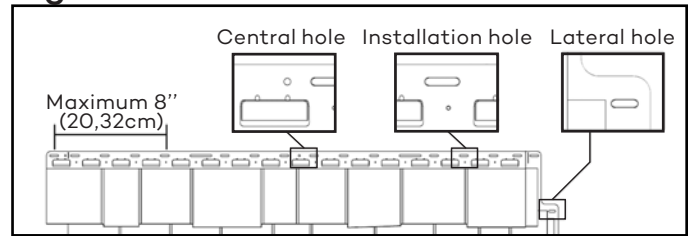


Figure 2

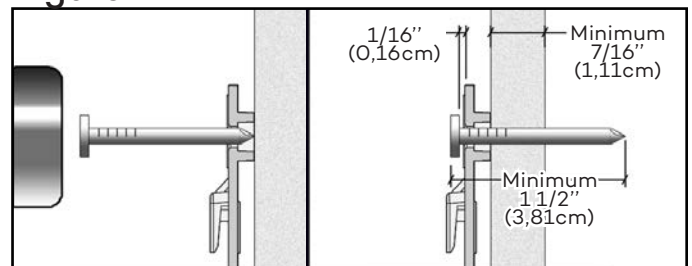


Figure 3

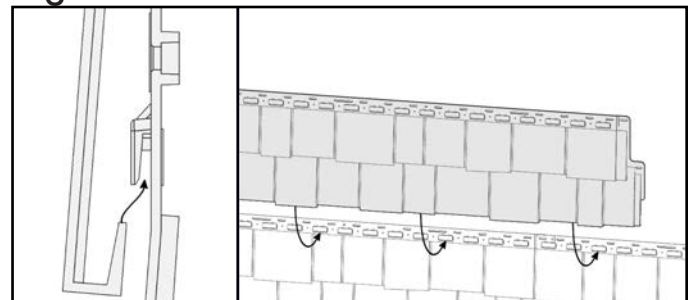
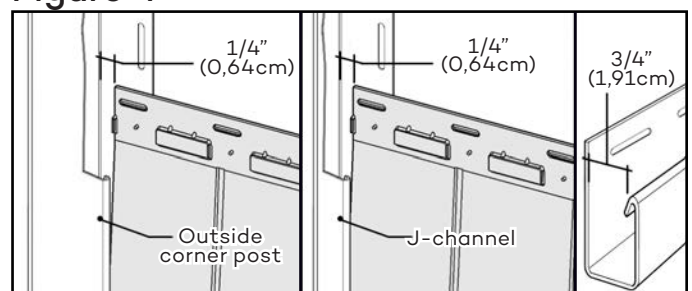


Figure 4



Some elements of the image above were partly removed to facilitate understanding.

ROUGHSAWN CEDAR STAGGERED INSTALLATION GUIDE



INSTALLATION STEPS

1-First install the starter strips at the lowest point of the structure. Make sure that the horizontal starting line is perfectly leveled and square with the wall. Leave a 4" (10,16cm) gap at each end of the wall for corner posts, corners or J-channels (1). If a floor is against the wall, install the top of the starter strips at 2 3/8" (6,03cm) above it in order to leave a gap of 1 1/8" (2,86cm) between starter strips and the floor (2). If there is no floor, starter strips should be flush with the base of the wall. Fasten the starter strips at maximum intervals of 8" (20,32cm) or less. Install the next starter strip by pressing it against the previous one (3) and fasten it as mentioned above (Figure A). Be sure to align adjacent walls.

2-Determine the number of sections needed for the wall by dividing the total length of the wall, less the width of the corner pieces used, by 55 5/8" (141,29cm). Cut the left side of the first section in a straight line in order to avoid having a very small piece at the right end of the wall. Any installed section should be at least 12" (30,48cm) long. Insert the first section into the starter strip and slide it leaving a 1/16" (0,16cm) space between its edge and the decorative corner installed previously (see the installation corner section) or slide TandoShake into the trim leaving a space of 1/4" (0,64cm) between the inside wall of the trim and the section (Figure B).

3-On each section, fasten the center hole of the product, this will ensure even movement of sections in both directions during expansion/contraction. Also place a fastener into the last hole on both ends, plus 2 others evenly spaced on each side of the center hole of the nailing channel and another into the lateral hole (Figure C). Fasteners should never be spaced more than 8" (20,32cm). Each full length section should be secured with a minimum of 8 fasteners. Remember that fasteners must be placed in the center of the nailing slots. Always use non-corrosive fasteners penetrating into a solid substrate of no less than 7/16" (1,11cm) thick. When attaching the fasteners, be sure they only lightly touch the product allowing it to move with varying temperatures and they are installed flush with the sections, so as not to interfere with the succeeding row.

- If the product are installed on a furring wall, a furring strip is required behind each fastener.
- If a section piece does not have the initial center hole, drill a new center hole of 1/8" (0,32cm) diameter at the same height as the other installation holes.

4-Install the following section by hooking it into the starter strip and sliding it to the left overlapping the previous. Make sure to space equally the sections according to the outdoor temperature during the installation. If product is installed in outdoor temperature from 30°F to 100°F (-1°C to 38°C) position the next section so that its upper left edge butts up against the stop post. For installations below 30°F (-1°C), position the section slightly right of the stop post (1/16" (0,16cm)) (Figure D). Once the section has been properly spaced, fasten it as previously indicated. Repeat this step until the end of the row.

Figure A

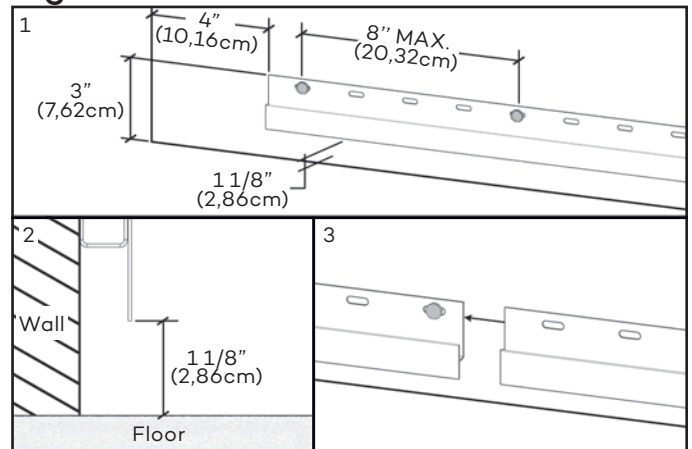


Figure B

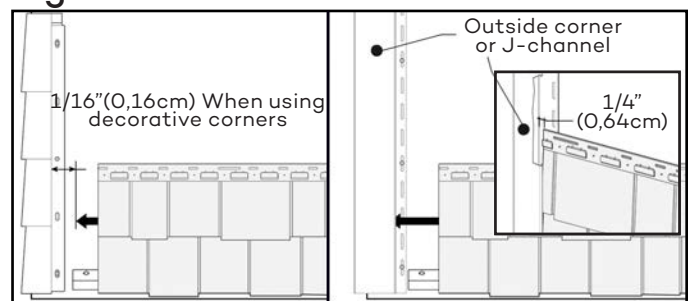


Figure C

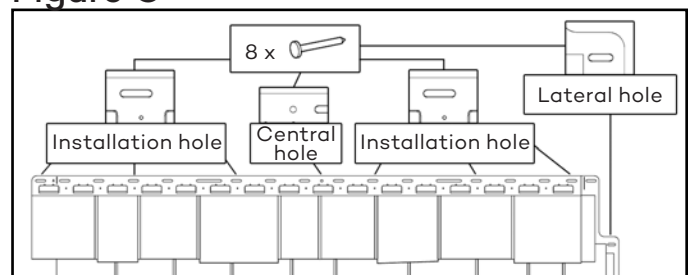
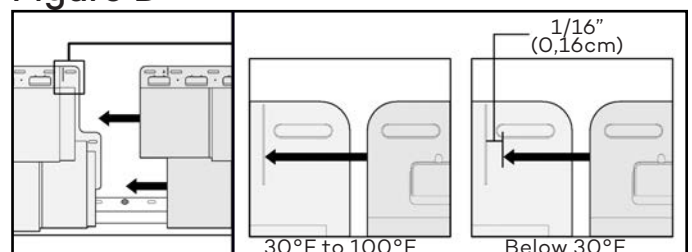


Figure D



ROUGHSAWN CEDAR STAGGERED INSTALLATION GUIDE



INSTALLATION STEPS (CONTINUATION)

5-Begin the second row by cutting the first section with approximately 16”(40,64cm) increment from the cutting line of the first row. Hooking the lower section with the top hooks of the last installed row. Never force the section up into the fingers of the lower row as this may damage the stop posts and cause buckling on sections. To eliminate stacking seams, alternate the cut positions of the first section for the following rows (Figure E).

6-For the last row or places where you may need to attach sections other than in installation holes, use a knife to create a new 1”(2,54cm) slot (Figure F); the slot must be wider than the fastener but not as wide as the fastener head. Although not set in installation holes, this type of cutting will allow the expansion/contraction movement of sections.

-Note: For proper installation & optimal appearance, shim as required to adjust the angle of the last row.

Reminder: Do not set accessories directly on the product. The fasteners must be fixed into a solid surface. If you need to set accessories over TandoShake, at a concealed spot on the product, create a new 1”(2,54cm) slot larger than the fastener body but smaller than the fastener head to permit expansion/contraction of sections.

Figure E

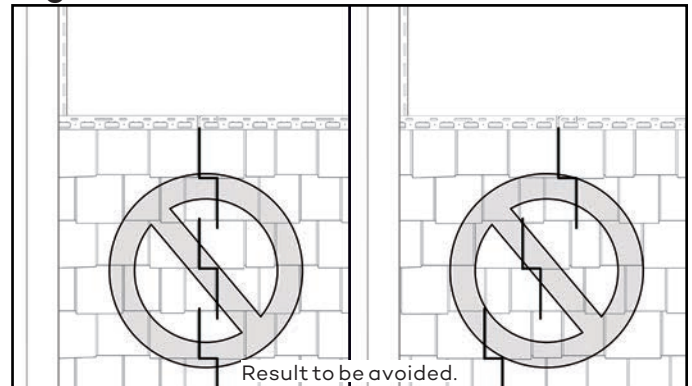
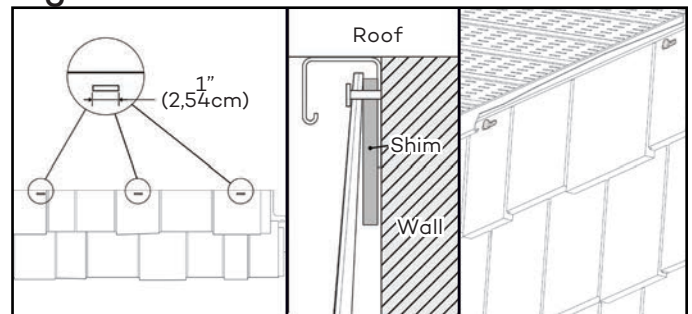


Figure F



SPECIAL SITUATIONS AND SUGGESTIONS

SITUATION:	ITEMS TO CHECK:
- Sections won't lock together side to side.	The wall may not be level and flat. Check previous sections to ensure that all sections and installation fingers are properly seated. (See General Information) Use shims as needed to ensure a level wall surface.
- The bottom locking fingers won't lock into the previous row.	
- Sections are buckling on the wall.	Make sure the fasteners are not restricting product movement. Check for proper spacing at interlocks. Make sure fasteners are fully engaged.
- Sections are not lying flat against the wall.	



ROUGHSAWN CEDAR STAGGERED INSTALLATION GUIDE

DECORATIVE CORNERS INSTALLATION

Caution: RoughSawn corners must be installed on wall corners prior to installing the RoughSawn Cedar Staggered sections. It is recommended that no more than two corner pieces are installed at one time so that slight adjustments on corner height can be made to match the height of section rows if necessary.

1-Install the first corner at 3/4"(1,91cm) of the lowest point of the wall corner. Fasten the center hole of the nailing channel on each side of the corner. Also fasten into the last upper holes and the bottom holes on each side of the corner (Figure G).

2-Install another corner by overlapping the previous one up to the reference line (Figure H). Fasten it as previously indicated.

3-Install multiple rows of product until one row overlaps the upper corner. Some adjustments may need to be made at the vertical overlap of the two corners (as they are installed) in order to maintain the proper corner/product alignment. There is approximately a 1/2"(1,27cm) vertical adjustment value. To do so, only remove the fasteners at the center holes of the upper corner. Adjust its position and put the fasteners back into the center holes of the corner.

4-For the last corner only, cut excess from part. If center holes are lost during cutting, make new center holes (wider than the shaft of the fastener, but smaller than the head) on each side and fasten it on wall (Figure I).

Figure G

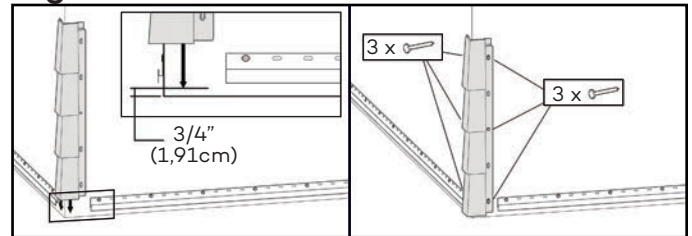


Figure H

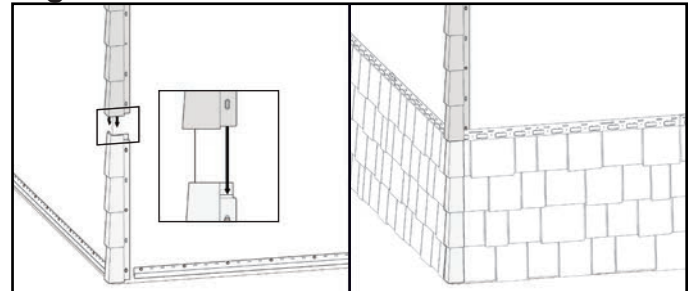
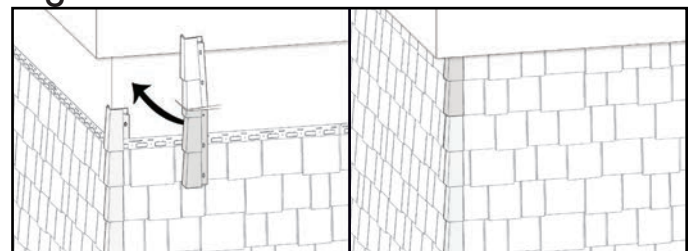


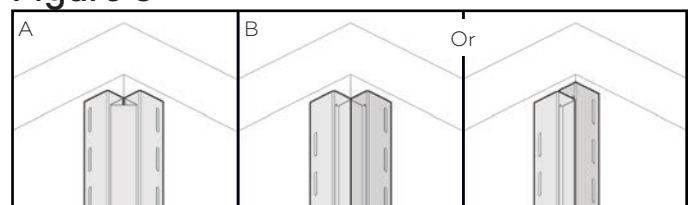
Figure I



INSTALLATION TIP

1-Many solutions are possible to finish an inside corner: Inside Corner Post (A) or two J-channels (B) (Figure J). It is important to seal the inside corner of the wall prior to installation of the trim.

Figure J



For details, see the respective installation guide of each product.