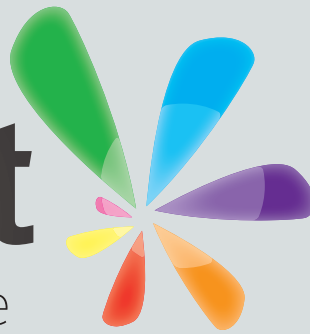
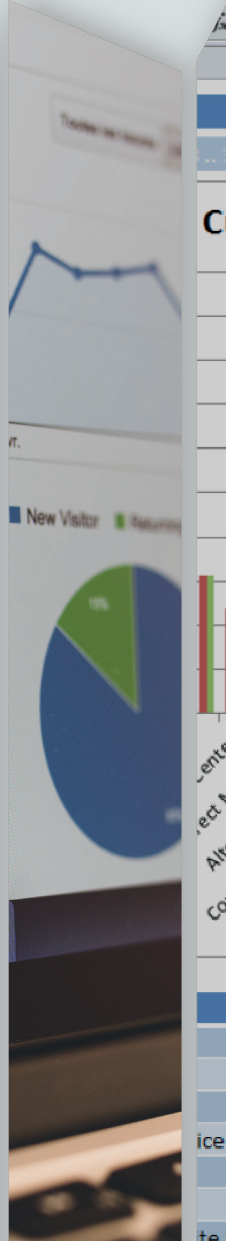
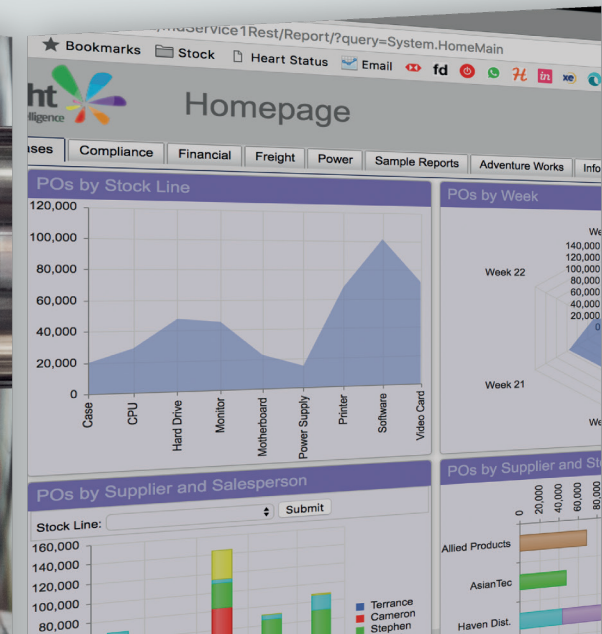


# Sharperlight

Simplified Intelligence



Your complex data simplified through a single, modular solution.



# It's brilliant because...

We are squarely focused on empowering your end-users, giving your teams the tools to easily create and maintain their own reporting and analysis content.

To accommodate varying needs between enterprises and even internal departments we have developed a broad range of features, simply pick and choose what you need from a common pool of functionality.



**Enterprise Reporting**



**Solution Development**



**Data Capture**



**Datamodel Studio**



**Report Scheduling**

We've made it modular and secure... an "off the shelf" solution that covers multiple industries, verticals and applications.

It provides dashboards, reporting, integration and custom solution development that will enhance productivity in any organization.

It is the only suite in its class that delivers comprehensive BI but also offers users the ability to write back to source within the same secure environment over the Web and within Excel®.





Sharperlight® delivers access to your application data across the organization in a modular design, in real time, across singular or multiple enterprise applications using a common interface.



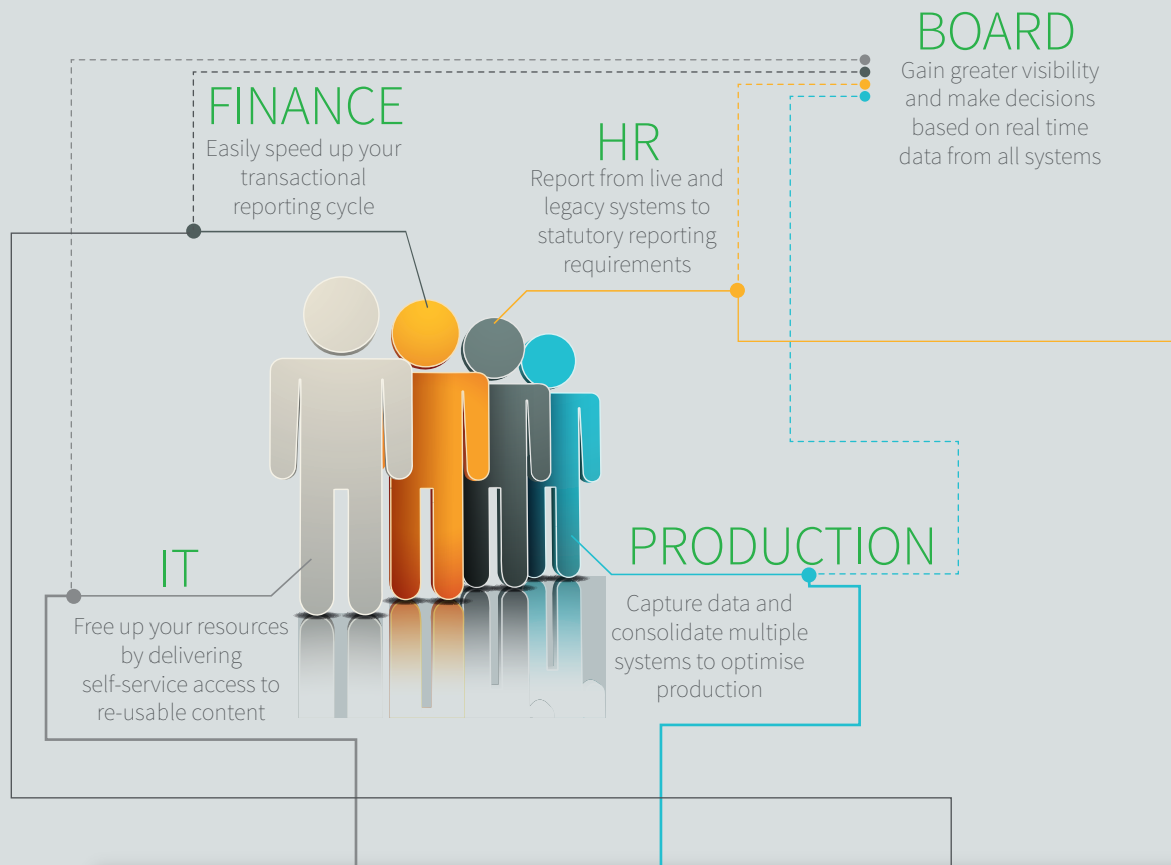
Have you got it



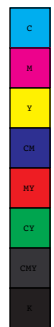
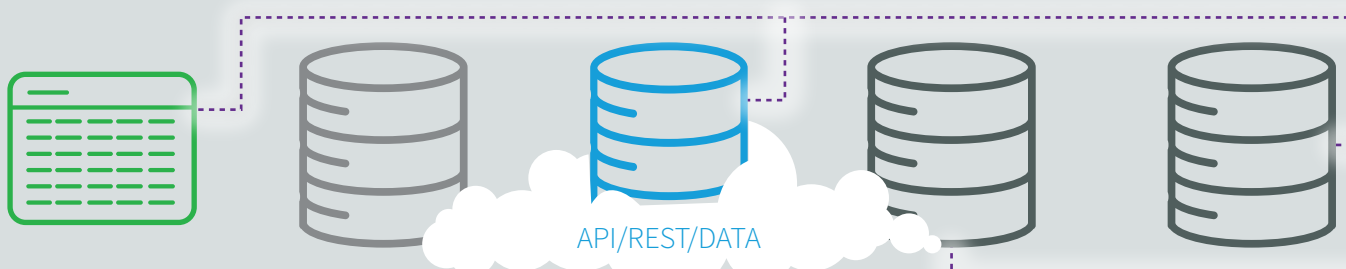
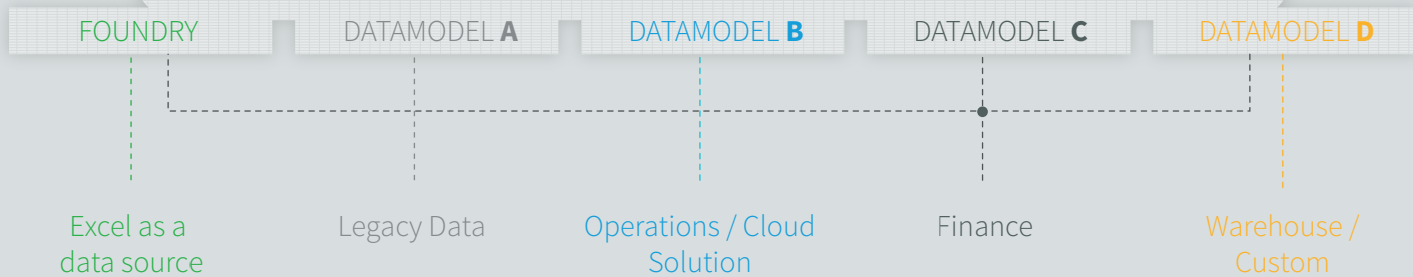


# ... it works like this

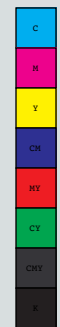
Your data can be captured, presented and consumed using your preferred web browser, in Excel® via the Sharperlight Excel Add-in or why not have it emailed to you weekly as a PDF. If your solution isn't covered by our extensive range of datamodels then you can create and deploy custom, dynamic, bi-directional datamodels quickly and your access privileges and security can be controlled at the most granular level.



## Sharperlight® Server









# Key features...

## Self-Service

A simple query concept, content delivery in Microsoft Excel® and publishing to the web makes Sharperlight® a simple ongoing reporting solution. It is particularly successful with small teams who need information transparency but with minimal IT support.

## Datamodel Layer

The datamodel layer is the secret sauce to how Sharperlight can operate so securely and efficiently. Datamodels transform a complex application database into something that can be easily accessed and consumed by the average user.

## Secure Access

Remote connections encrypt and compress all communications, and the web service can utilise HTTPS. Logins can be bound to network authentication and the login can determine a user context with application and datamodel security.

## Low IT Overheads

IT involvement in maintaining a Sharperlight instance is usually very small. Setting up the initial service accounts and access rights is needed up-front but rolling into production, the end-users and power-users have the tools to create, maintain and deploy their own reports.

## Web Services

The Sharperlight Service combines datamodel service and a REST web service. The rich client installed on desktops, interacts with the datamodel service whilst the web service can be accessed from a web browser for reports and dashboards. All connections are authenticated to a valid login.

## Web Reporting

Queries are published as tables, charts, grids and reports. Delivered in HTML5 and will work in modern web browsers. Web reports can be refreshed and filtered in the web. Drill Through and Drill to other web reports.

## Dashboards

Creation and layout done in the web. Pages can contain multiple Tiles. Tiles can return published queries, or return internet content, or can be a web document.

## Agile Datamarts

Where data needs to be kept in a snapshot or the transaction volumes are degrading performance, Sharperlight can materialise a query into a physical table. These materialised queries appear to the end-user as virtual datamodels and they work just like any other datamodel but they can be refreshed on command.

## Real-time Access

The Sharperlight data access layer is optimised to query production data sources directly and it avoids the need for staging areas and OLAP cubes. Direct queries with meaningful filters will not burden a modern relational database and computer hardware.





### Common Query Interface

There is a common Query Builder for accessing each datamodel and defining layout, filters and outputs. On the surface the query interface looks very simple but there is a depth of functionality available to advanced users.

### Rapid Deployment

Installing Sharperlight with an existing datamodel is extremely fast and invariably the time taken to organise network access and service rights, takes significantly more time than the pure installation and setup. With a pre-built datamodel, training can commence immediately and if a package of web reports has been prepared for the site, these can be used straight away.

### Cross-application Reporting

An organisation with multiple operational systems can use datamodels to securely access each system, and to report and reconcile between each. Sharperlight can easily scale from a single data source to sourcing information from across an enterprise or multiple enterprises.

### Drilldown and Drill Through

Drilling into existing reports and queries saves time and minimises the need for further analysis. Sharperlight has on-the-fly Drilldown through its rich desktop client and saved drill paths can be replayed as a Drill Through. In the web the saved drill paths become Drill Through action points in reports and charts.

### Excel Add-in

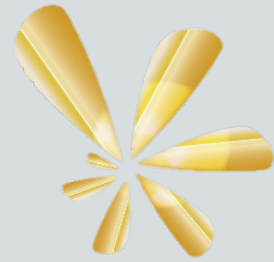
The Sharperlight Excel Add-in provides direct integration of the Query Builder into Excel with Query Formulas that respect cell referencing and automatic recalculation. Action formulas can transform a workbook into a dynamic structure with breakouts on rows, columns and worksheets.

# Have you got it?

We have a team of specialists that are eager to demo Sharperlight for you, get in contact using the details over-leaf. You can also find more detailed, technical information online at [www.sharperlight.com](http://www.sharperlight.com)

# eclipse

+44 (0)203 866 8800  
enquiries@eclgrp.com  
www.eclgrp.com



## Sharperlight GOLD Partner



Philight Pty Ltd is a Western Australian based software development company, delivering products internationally for an extensive range of range of industries and verticals including ERP, EAM, HR, CRM, Sales, Hospitality, Aviation, Professional Services and Mining, through its Sharperlight® suite of products using a localised distribution network.

info@sharperlight.com  
www.sharperlight.com

