

FRAMESAVER® FUSIONFRAME®



**IT'S NOT JUST A COMPOSITE FRAME.
IT'S A FULL INSTALLATION SYSTEM.**

Unlike anything else on the market. Introducing the new FrameSaver® FusionFrame® solution from Endura Products: A one-of-a-kind alternative to all-composite and all-wood jambs that helps installers overcome common installation challenges, delivering a better install, a flawless finish and maintenance-free, rot-proof performance.

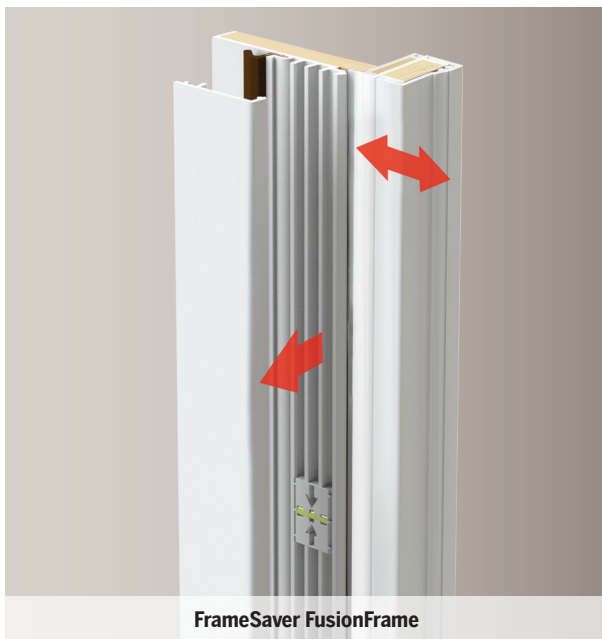
 **FUSION
FRAME™**



ISSUES WITH TRADITIONAL COMPOSITE FRAMES ARE A THING OF THE PAST WITH FUSIONFRAME.



Competitor Composite Frame



FrameSaver FusionFrame

UNLIKE ANY OTHER DOOR FRAME.

Reset your expectations when it comes to the performance and quality of maintenance-free door frames. FrameSaver® FusionFrame® is unlike any other composite frame, delivering exactly what you need and want, even if it didn't seem possible before. FusionFrame **puts an end to:**

Ø **BENDING AND BOWING.**

Being flexible is great... but when it comes to door frames, you need something that can stand strong, regardless of temperature or install.

Ø **DODGING SIDELITE AND HINGED PATIO UNITS.**

With a rigid FrameSaver core, FusionFrame mulls eliminate concerns with thermal bow while FusionFrame's unique jamb design allows for concealed installation fasteners, even when the sidelite sash blocks access to the rabbet part of the jamb.

Ø **SHIMMING, SHIMMING AND SHIMMING SOME MORE.**

Composite frames have their benefits, but installing them? Not so great. No one has time to install shims every foot.

Ø **AVOIDING STORM DOORS.**

Because FusionFrame is more stable in high temperatures, installing storm doors are a non-issue.

DURABILITY MEETS MAINTENANCE-FREE.

Fusing together the benefits of composite and wood-based door frames, FusionFrame® delivers the strength and performance you need in one innovative solution.

1. DEFLECTION. MANAGED.

FusionFrame's rigid FrameSaver core stands strong against warping and bowing, delivering the trusted, proven strength of wood-based door frames.

2. STORM AHEAD.

FusionFrame jambs and brickmould deliver the needed rigidity to support storm door installations, even when the temperature rises.

3. HINGED PATIO DOORS. SIDELITES. IT'S ALL GOOD.

With a rigid engineered core, FusionFrame mulls stand strong and straight while eliminating concerns with thermal bow.

4. NO WICKING. NO ROTTING.

Part of the FrameSaver® Rot-Proof Door Frame product line, FusionFrame features a maintenance-free composite bottom that won't wick or rot, wrapped in a composite exterior for lasting, worry-free performance.



1. 2.



3.



4.



A BETTER INSTALL—WITHOUT LIMITATIONS

Let's face it: the real world is far from perfect. Rough opening conditions are no exception. Enter FusionFrame®. Built-in installation aids and features mean that FusionFrame isn't just another composite door frame, it's a full installation system designed to help installers overcome common issues and deliver a better install.

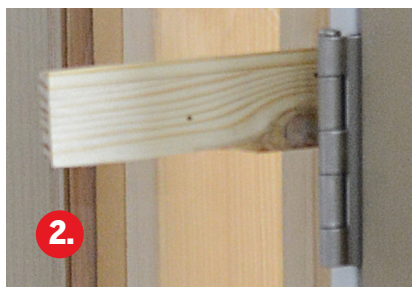
1. BRIDGE THE GAP.

Just because the rough opening is out of plumb, or twisted, doesn't mean your door unit has to be. With $\frac{1}{4}$ " of inside-to-outside "float", FusionFrame's innovative brickmould design can be adjusted to fit flush against the house, despite rough opening conditions, while keeping the door frame plumb.



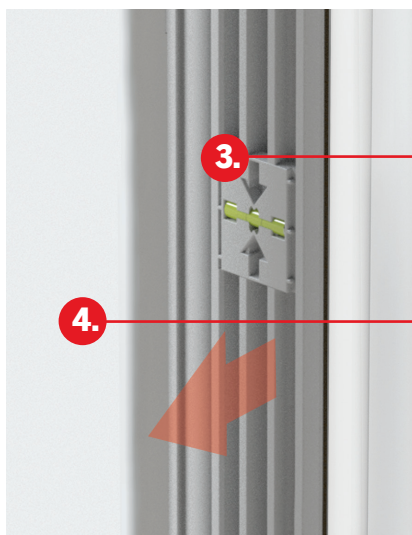
2. FEWER SHIMS. FEWER HEADACHES.

Gone are the days of shimming every foot or worse to achieve a quality install. FusionFrame's sturdy engineered core delivers a strong no-nonsense installation requiring minimal shims.



3. LEVEL-HEADED HELP.

Installing a door system of any size is a hands-on activity. While FusionFrame can't lend an actual hand, it does feature a built-in bubble level to help you and your team get installation off to a level start.



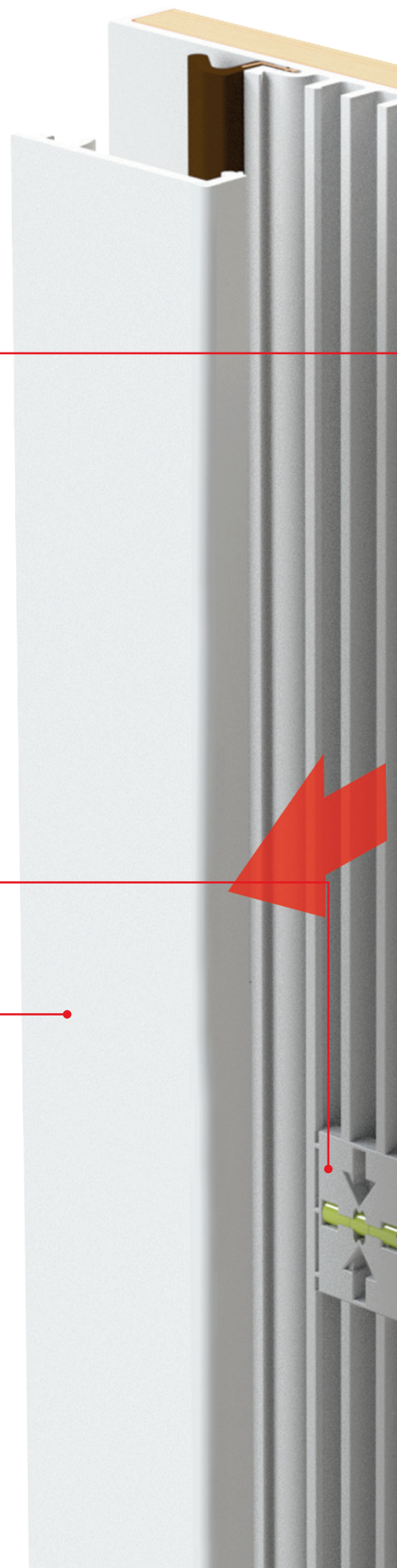
4. MAR-FREE INSTALLATION.

FusionFrame's removable jamb stop cover allows for concealed installation fasteners - no need to mar the finish during install for a truly prefinished, flawless appearance.



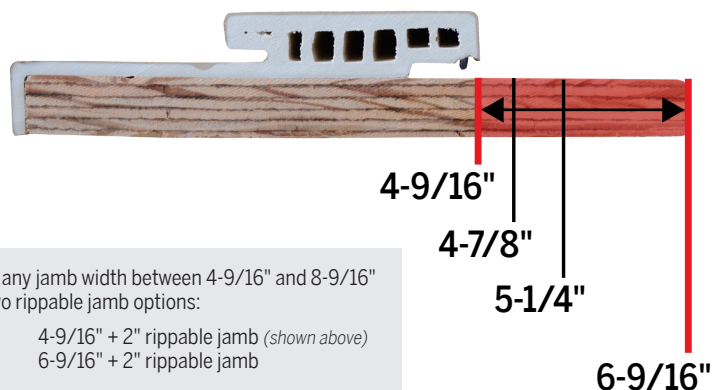
5. BLEMISH-FREE BRICKMOULD.

Each FusionFrame brickmould option allows for concealed installation fasteners, eliminating fasteners being driven directly into the face of the brickmould.





A.



Obtain any jamb width between 4-9/16" and 8-9/16" with two rippable jamb options:

- 4-9/16" + 2" rippable jamb (shown above)
- 6-9/16" + 2" rippable jamb

BUILD WHAT YOU NEED, WITHOUT COMPROMISE.

Life is about choices. And until now, exterior door frames have been too. Opting for composite frames has meant gaining the benefits of prefinished convenience and performance while losing flexibility in the shop to build what you need in an efficient manner. Not so with FusionFrame®.

A) SEAMLESS RIPPABILITY.

Supports uncommon and varying wall depths to meet your needs with seamless rippability between 4-9/16" and 8-9/16" without compromising the finish.

B) THE MULLS YOU NEED.

Not only do FusionFrame mulls offer unmatched strength and stability, but they are also available in a full range of profiles and options to meet your needs. Whether you need standard, Fat Boy, Back-to-Back or Spread mulls – FusionFrame has a solution for you.

C) FINISHING FREEDOM.

FusionFrame is available with a paintable, prefinished white or stainable textured finish, delivering the convenience of a field-ready product or the freedom to finish however you please to meet your needs.

D) CONSISTENT QUALITY. UNPARALLELED SERVICE.

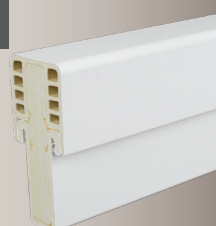
No matter your needs – Endura Products has you covered, with a proven track record of delivering quality products in a consistent, timely manner, manufactured right here in the USA.

B.



Spread Mull

C.



Smooth White Finish



Textured Stainable Finish



OPTIONS? PLENTY.

FusionFrame® is available in a variety of jamb, mull and brickmould sizes and options to meet your specific needs. FusionFrame is also available in a simplified one-piece design, which does not include the removable jamb stop cover and bubble level, and is standard for all header jambs. All jambs, mulls and brickmould are available in paintable, prefinished white and stainable textured finish.

FRAMESAVER FUSIONFRAME PRODUCT OFFERING AVAILABLE IN 6/8 AND 8/0 LENGTHS							
Jambs	Dedicated Jambs				Width-Adjustable (Rippable) Jambs		
	4-9/16"	6-9/16"	4-9/16" + 2" Rippable	6-9/16" + 2" Rippable			
1-Piece Jamb	●	●	●	●			
2-Piece Jamb with Removable Jamb Stop Cover and Bubble Level	●	●	●	●			
Transom Sills (2-Piece Jambs Only)	○		○				
Mulls	3-9/16"	4-3/8"	4-9/16"	5-5/8" Storm Door Ready	6-9/16"	7-5/8" Storm Door Ready	8-5/8" Storm Door Ready
Standard Mull (1" x 2")	●	●					
Fat Boy Mull (1-1/2" x 2-1/2")		●					
Back-to-Back Mull			○	○	○	○	○
Spread Mulls Ranging From 1" to 4-1/4" Spread			○		○		
Exterior Trim	1-Piece WM180 with J-Channel	2-Piece WM180 with Removable Cover	2-Piece Flat Casing with Removable Cover	2-Piece Flat Casing with J-Channel & Removable Cover			
Dedicated	●	●	●	●			
Rippable		●	●	●			

● Available ○ Product Available via Utilization of FusionFrame Accessories

JAMB OPTIONS

1-Piece Jambs



DEDICATED 4-9/16" 1-PIECE JAMB SHOWN IN TEXTURED STAINABLE



DEDICATED 6-9/16" 1-PIECE JAMB SHOWN IN SMOOTH WHITE



4-9/16" + 2" 1-PIECE RIPPABLE JAMB SHOWN IN TEXTURED STAINABLE



6-9/16" + 2" 1-PIECE RIPPABLE JAMB SHOWN IN SMOOTH WHITE

2-Piece Jambs



DEDICATED 4-9/16" 2-PIECE JAMB SHOWN IN SMOOTH WHITE



DEDICATED 6-9/16" 2-PIECE JAMB SHOWN IN TEXTURED STAINABLE



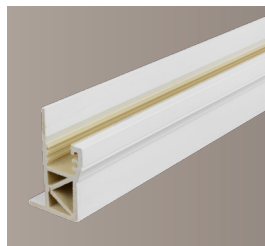
4-9/16" + 2" 2-PIECE RIPPABLE JAMB SHOWN IN SMOOTH WHITE



6-9/16" + 2" 2-PIECE RIPPABLE JAMB SHOWN IN TEXTURED STAINABLE

BRICKMOULD OPTIONS

1-Piece & 2-Piece Brickmoulds (WM180 Profile)



1-PIECE BRICKMOULD WITH
J-CHANNEL 9/16" RETURN LEG
SHOWN IN SMOOTH WHITE



2-PIECE BRICKMOULD 9/16"
RETURN, WOOD CORE
SHOWN IN SMOOTH WHITE



2-PIECE BRICKMOULD, 2-9/16"
RETURN, WOOD CORE
SHOWN IN SMOOTH WHITE

Flat Casing (1-1/16" x 3-1/2")



FLAT CASING, WOOD CORE
SHOWN IN SMOOTH WHITE



FLAT CASING WITH J-CHANNEL,
WOOD CORE
SHOWN IN SMOOTH WHITE



FLAT CASING WITH 2-9/16" RETURN
LEG, WOOD CORE
SHOWN IN SMOOTH WHITE



FLAT CASING WITH J-CHANNEL,
2-9/16" RETURN LEG, WOOD CORE
SHOWN IN SMOOTH WHITE

MULL OPTIONS & CAPABILITIES

1-Piece Mulls



3-9/16" STANDARD MULL
SHOWN IN SMOOTH WHITE



4-3/8" STANDARD MULL
SHOWN IN SMOOTH WHITE



4-3/8" FAT BOY MULL
SHOWN IN SMOOTH WHITE

Mull Accessories



1-1/2" U-SHAPED COVER FOR 4-9/16"
BACK-TO-BACK MULLS
SHOWN IN SMOOTH WHITE



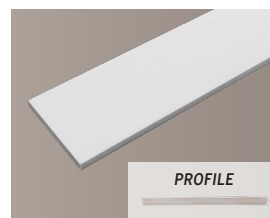
2-1/2" U-SHAPED COVER FOR SPREAD
MULLS SHOWN IN
SMOOTH WHITE



EXTRA DEEP 2-23/32" U-SHAPED
COVER FOR >4-9/16" MULLS
SHOWN IN SMOOTH WHITE



L-SHAPED MULL COVER RECEIVER
SHOWN IN SMOOTH WHITE



EXTERIOR FLAT COVER
SHOWN IN SMOOTH WHITE



INTERIOR FLAT COVER
SHOWN IN SMOOTH WHITE



MULL EXTENDER
SHOWN IN SMOOTH WHITE



MULL EXTENDER ATTACHMENT
SHOWN IN SMOOTH WHITE

ADDITIONAL FUSIONFRAME® OPTIONS & ACCESSORIES

1-Piece Brickmould Miter Alignment Key

Supports alignment of the one-piece brickmould, ensuring a cohesive appearance without sacrificing brickmould adjustability.



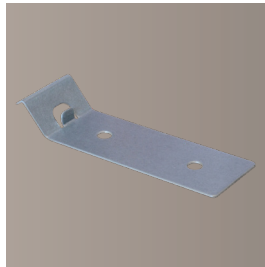
MITER ALIGNMENT KEY



MITER ALIGNMENT KEY, INSTALLED

Outswing Conversion Bracket

Retention bracket secures brickmould in place for outswing conversions. **All dedicated jambs** can be converted to outswing units.



OUTSWING CONVERSION BRACKET



OUTSWING CONVERSION BRACKET, INSTALLED



OUTSWING CONVERSION BRACKET, INSTALLED, WITH BRICKMOULD

Shipping Clip for 2-Piece Jambs

Keeps Removable Jamb Stop Cover in place during transit and allows for easier removal in the field. Available for two-piece design only.



SHIPPING CLIP



SHIPPING CLIP, INSTALLED

Transom Sills

Transom covers are available for 4-9/16" or 4-9/16" + 2" Jambs. Transom sills can be created by replacing the original jamb stop cover with this transom cover.



TRANSOM COVER SHOWN IN SMOOTH WHITE



TRANSOM COVER + 2-PIECE JAMB



HEAT TESTING

Don't just take our word for it. In side by side heat testing, FusionFrame stood strong and straight, while the leading competitor composite frame began deflecting at the start of the test, with temperatures merely reaching 110-120 degrees Fahrenheit.

CERTIFIED TESTING

20-Minute Fire-Rating: FusionFrame is 20-minute fire rated for positive pressure to UL 10C and NFPA 252, and neutral pressure with hose stream to UL 10B, NFPA 252 and CAN/ULC S104. Rated frame sizes include single doors up to 3080 and pair doors up to 6080.

Florida Product Approval: FusionFrame is approved for use in Florida, including HVHZ areas, under FL 25610.7/.8/.11/.12. Additional approvals are pending.

TDI Product Evaluation: In progress.

NAMI Waiver of Retest Equivalency: Issued, with FusionFrame acceptable for use as a substitute in air, water, and structurally certified tested door systems.

⚠ WARNING: Drilling, sawing, sanding or machining wood products can expose you to wood dust, a substance known to the State of California to cause cancer. Avoid inhaling wood dust or use a dust mask or other safeguards for personal protection. For more information go to www.P65Warning.ca.gov/wood.

Innovation protected under patents and patents pending in U.S. and Canada. See www.EnduraPatents.com

Form# FSFFBro-19 Effective 9.19

**FUSION
FRAME™**

**POWERED BY
ENDURA**
DOOR COMPONENTS MADE IN THE USA

8817 W. Market St., Colfax, NC 27235
1.800.334.2006 www.enduraproducts.com